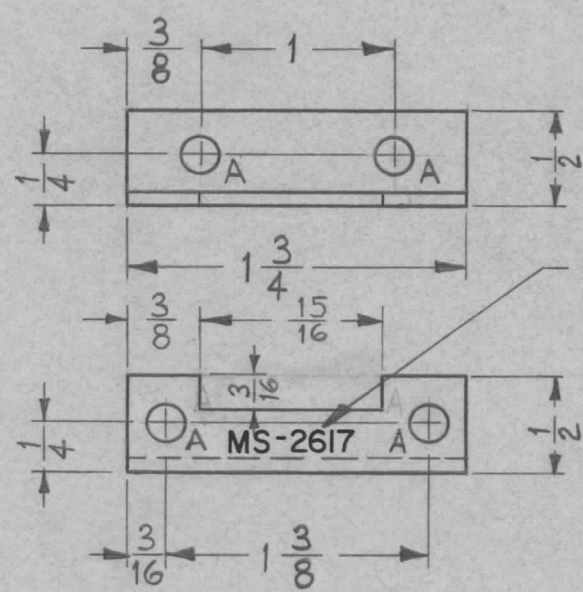
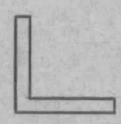


|                |         |            |        |         |
|----------------|---------|------------|--------|---------|
| REQ. PER. UNIT | USED ON |            |        | MS-2617 |
|                | MODEL   | ASS'Y. NO. | DATE   |         |
| 3              | GPE-1   |            | 6-8-61 |         |



A ~  $\frac{3}{16}$  DIA. 4 REQ.

METAL STAMP TMC PART NO. AS SHOWN  $\frac{1}{8}$  HIGH GOTHIC.



| REQ.               | ITEM              | PART NO.        | DESCRIPTION   |                |             | SYMBOL  |           |
|--------------------|-------------------|-----------------|---|----------------|-------------|---------|-----------|
|                    |                   | .064            | THE TECHNICAL MATERIEL CORP.  |                |             |         |           |
|                    |                   | STOCK SIZE      | MAMARONECK, NEW YORK  |                |             |         |           |
|                    |                   | ALUMINUM        | BRACKET, OVEN MOUNTING  |                |             |         |           |
|                    |                   | MATERIAL        |   |                |             |         |           |
| ISSUE              | ITEM              | CHANGED FROM    | DATE  | CH. NO.        | DRAFTS      | CHECKER | ENG. APP. |
| TOLERANCES         |                   |                 | SCALE: FULL (DO NOT SCALE).   |                |             |         |           |
| DEC. DIM. ±        |                   |                 | MAXIMUM ALLOWABLE TOLERANCES HAVE BEEN DETERMINED AND ANY DEVIATIONS WILL BE CAUSE FOR REJECTION. |                |             |         |           |
| FRAC. DIM. ± 1/64  |                   |                 | REMOVE ALL BURRS AND SHARP EDGES  |                |             |         |           |
| ANGULAR DIM. ±     |                   |                 |   |                |             |         |           |
| 5052-H32           |                   |                 | W.D.F.  | file           | [Signature] |         |           |
| TYPE & TEMPER      | HEAT TREAT. SPEC. | DRAWN           | CHECKED   | FINAL APPROVAL |             |         |           |
| S404 YELL. IRIDITE |                   | [Signature]     | [Signature]   | MS-2617        |             |         |           |
| FINISH & SPEC. NO. |                   | ELEC. DES. APP. | MECH. DES. APP.   |                |             |         |           |