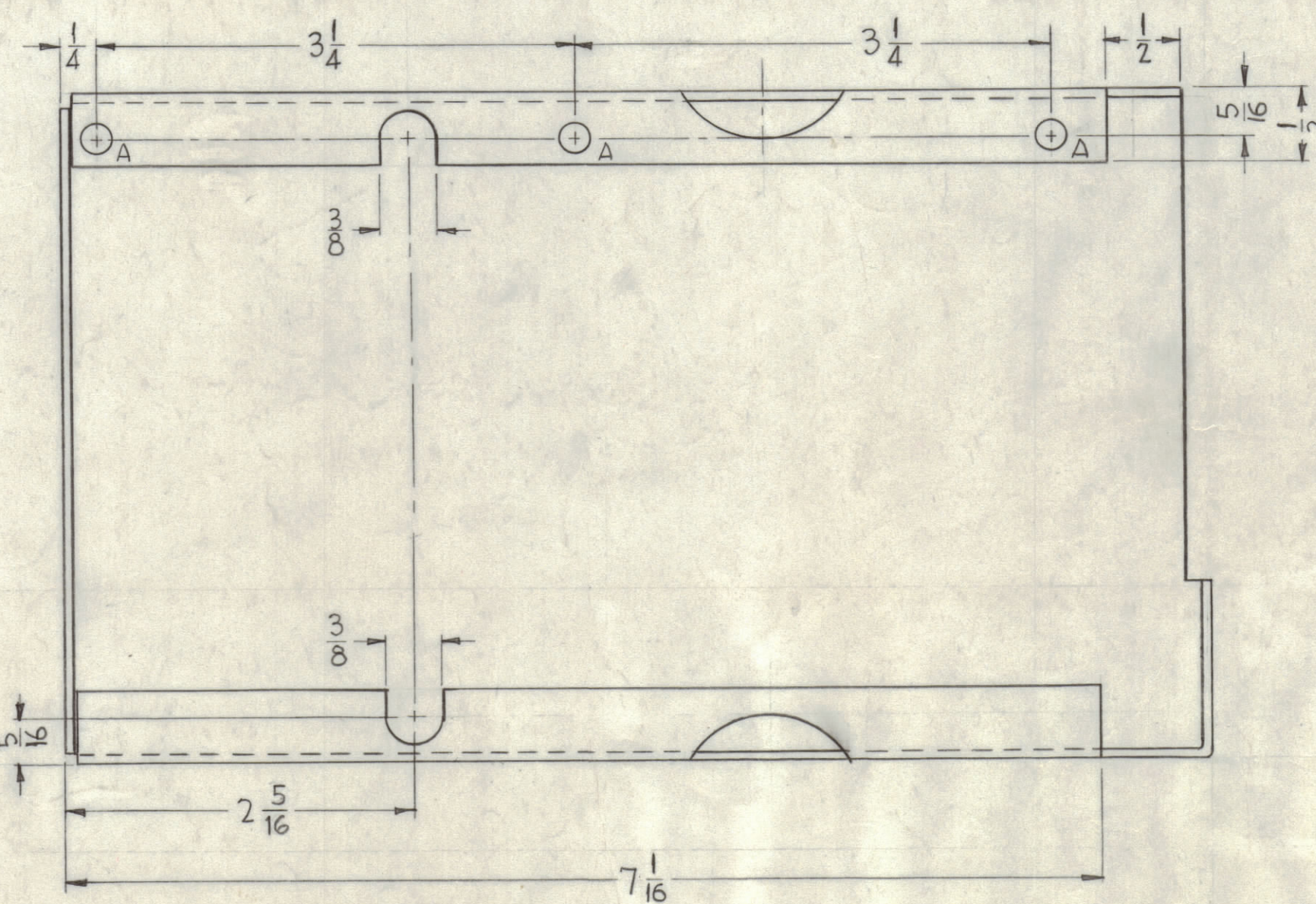
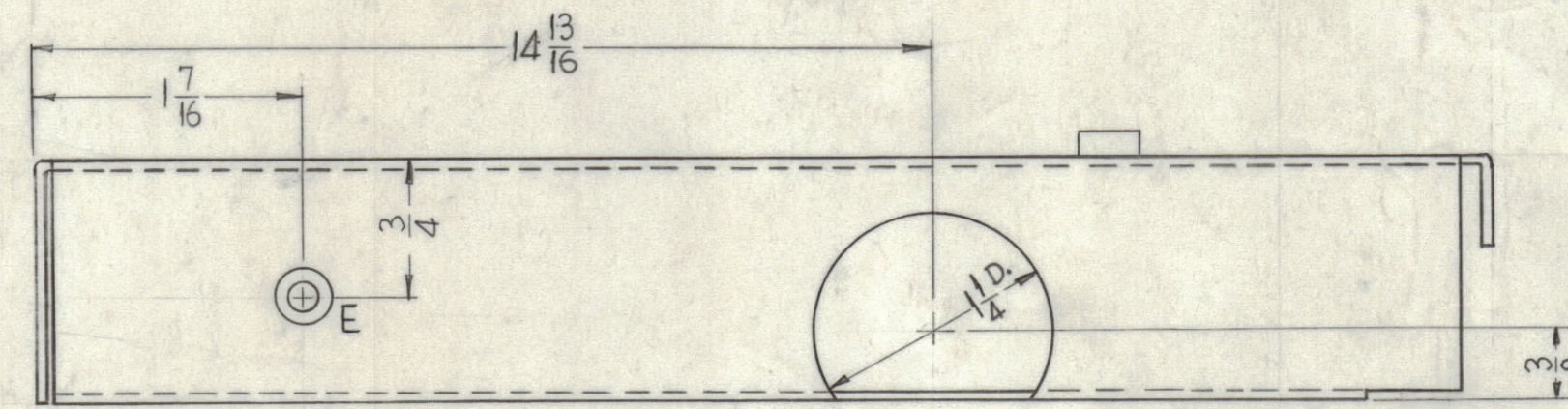
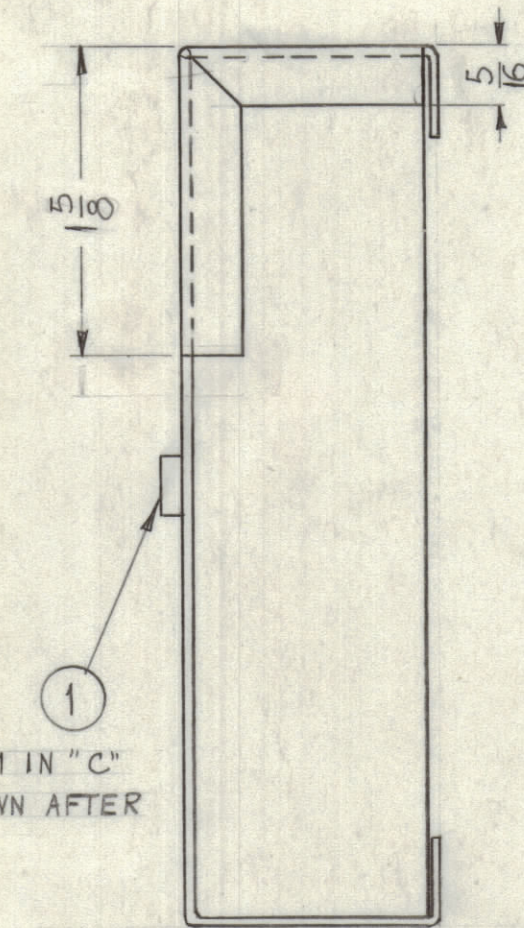
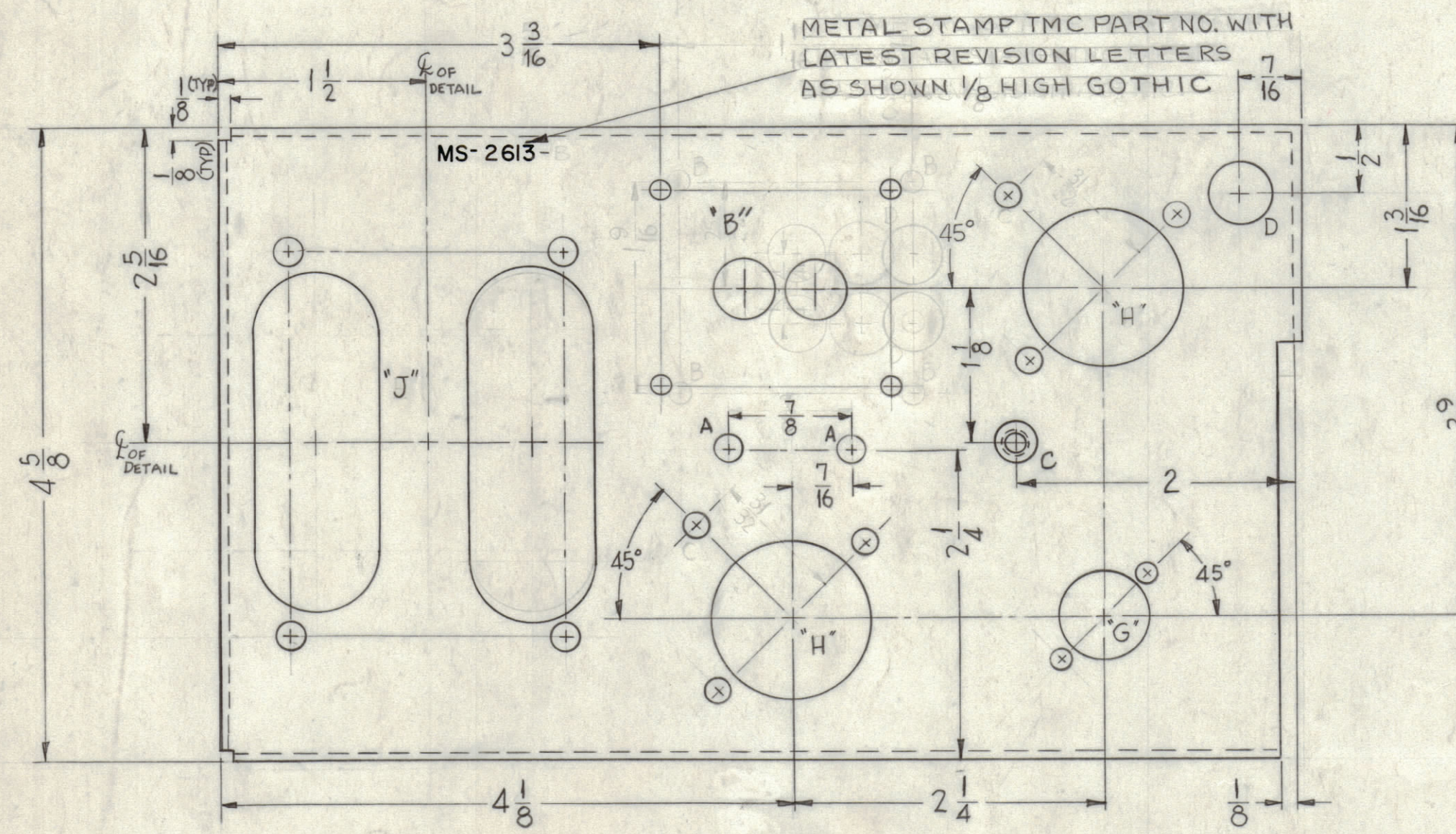
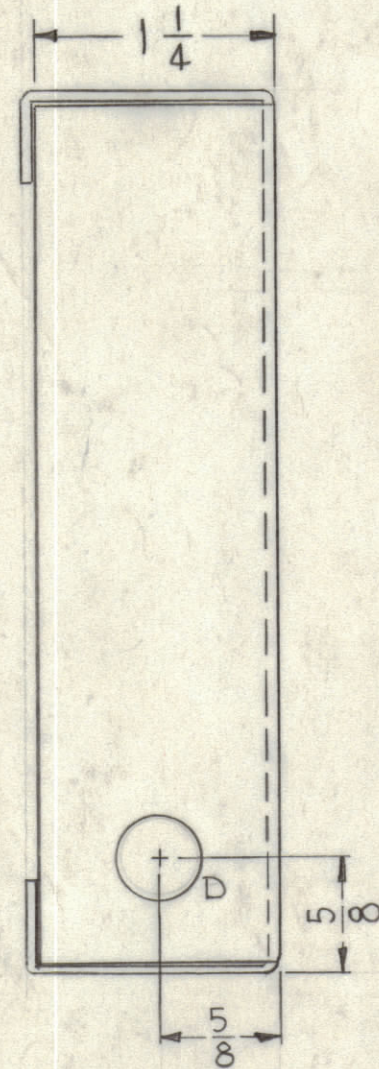
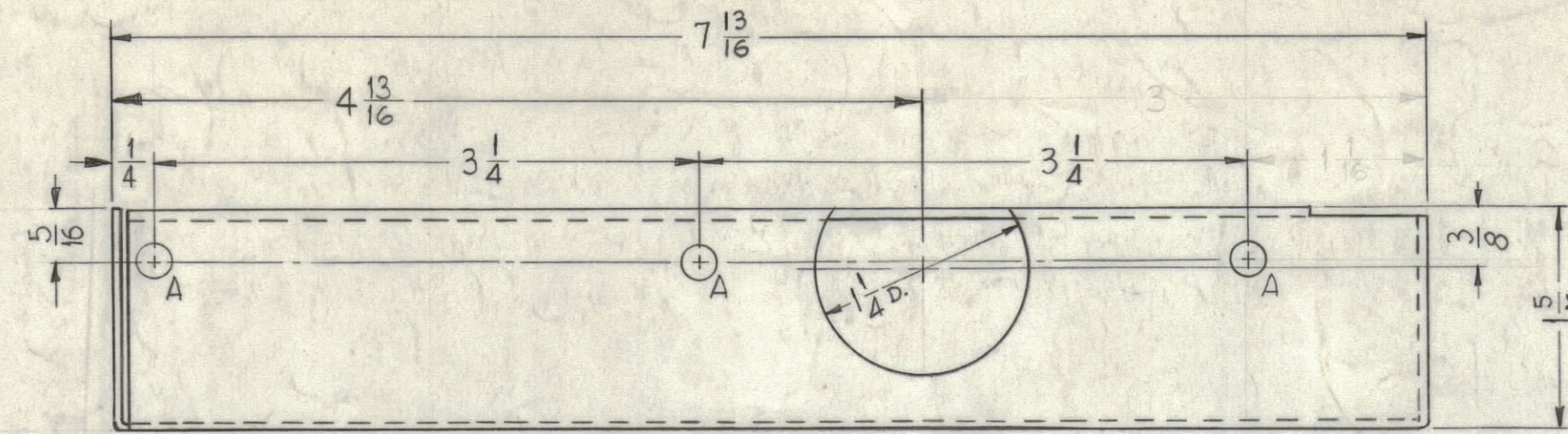


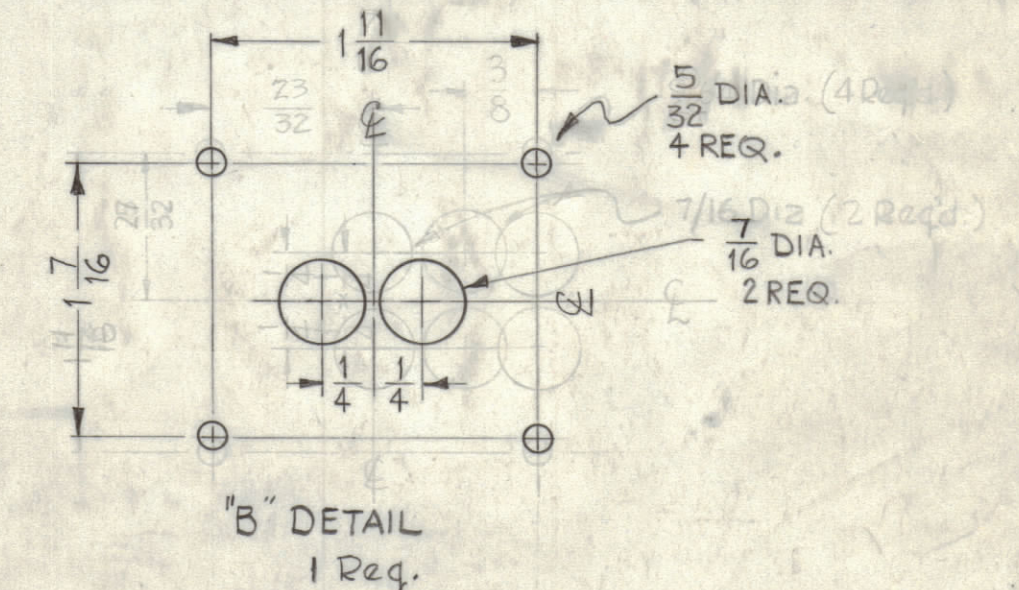
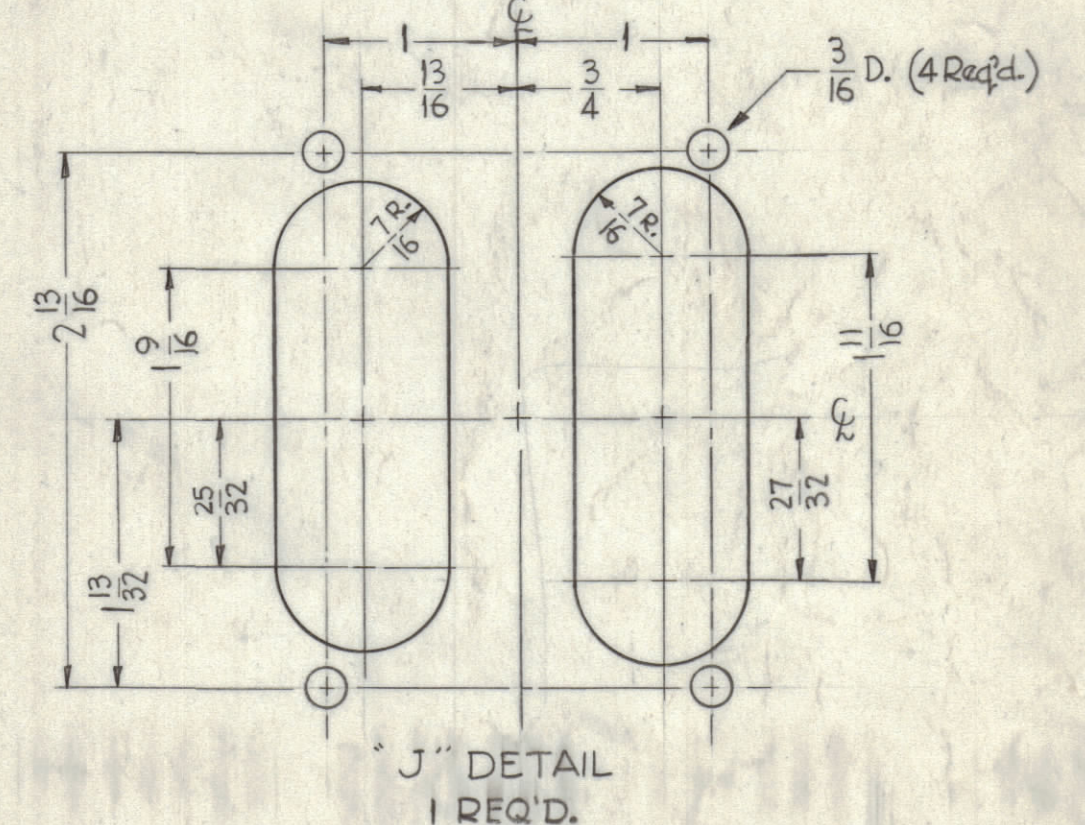
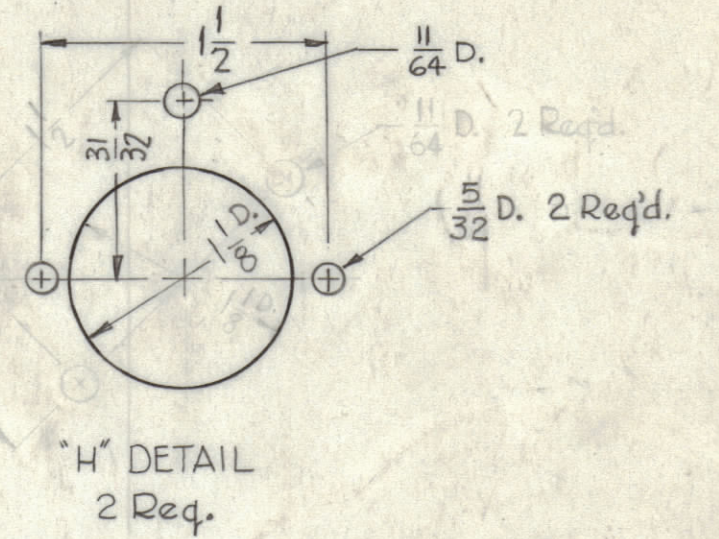
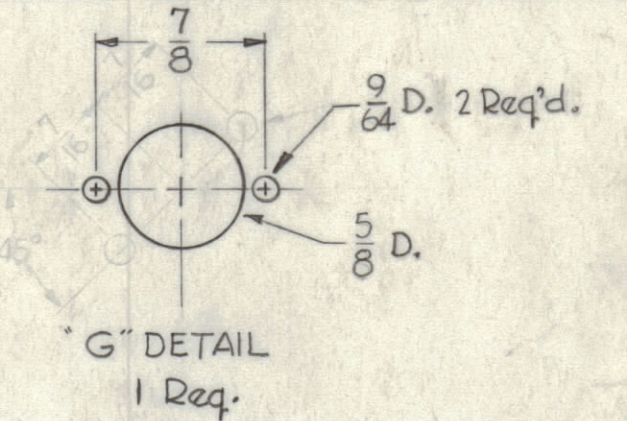
**NOTICE TO PERSONS RECEIVING THIS DRAWING**

THE TECHNICAL MATERIEL CORPORATION claims proprietary right in the material disclosed herein. This drawing is issued in confidence for engineering information only and may not be re-produced or used to manufacture anything shown hereon without permission from THE TECHNICAL MATERIEL CORPORATION to the user. This drawing is loaned for mutual assistance and is subject to recall at any time.

Property of:  
THE TECHNICAL MATERIEL CORPORATION  
MAMARONECK, NEW YORK



HOLES	REQ'D.
A ~ 3/16 D.	7
B ~ See DETAIL	1
C ~ .191-.194 DIA.	1
D ~ 7/16 D.	2
E ~ DR. & C'SINK FOR G-32	1
F ~ C'SINK FOR G-32	1



DECIMALS	FRACTIONS
± .05	± 1/64
± .01	± 1/32
± .005	± 1/64

SYM	ZONE	DESCRIPTION	DATE	CH. NO.	DRAFTS	CHECKER	ENG. APP.
B	F2	11/64 HOLE ON DETAIL "H" WAS 5/32	4-24-64	11288	WJB	WJB	
A	5E	ON RIGHT END VIEW 1-3/8 DIM WAS 1 7/8	11-2-61	5802	GDL		
	2E	ON "H" DETAIL, 5/32 DIA. WAS 11/64					
	2B	ON "B" DETAIL, 5/32 DIA. WAS 9/64					

UNLESS OTHERWISE SPECIFIED: DIMENSIONS ARE IN INCHES. TOLERANCES ON FRACTIONS ± 1/64, DECIMALS ± .005, ANGLES ± 1/2°. MAXIMUM ALLOWABLE TOLERANCES HAVE BEEN DETERMINED AND ANY DEVIATIONS WILL BE CAUSE FOR REJECTION. REMOVE ALL BURRS & SHARP EDGES.

REF: LD-950(8)

REQ. PER UNIT	MODEL	SECTION	ASSY. NO.	DATE
1	GPE-1	Power Supply		6-7-61

REQ. ITEM	PART NO.	DESCRIPTION	SYMBOL
1	NT-129-632-4	NUT, ROUND, SWAGE TYPE	
	.064	STOCK SIZE	
	ALUMINUM	MATERIAL	
	5052-H32	TYPE & TEMPER	
	3404	FINISH & SPEC. NO.	

THE TECHNICAL MATERIEL CORPORATION  
MAMARONECK, NEW YORK  
CHASSIS, POWER SUPPLY  
DRAWN: [Signature] CHECKED: [Signature] FINAL APPROVAL: [Signature]  
MS-2613 B

MS-2613 B