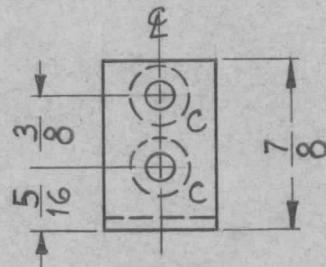
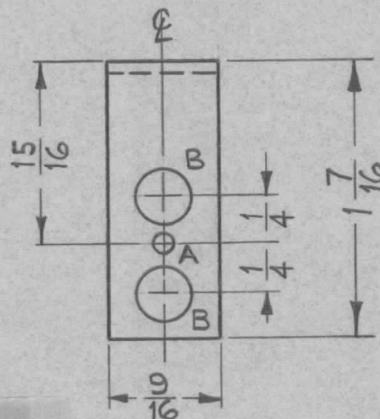


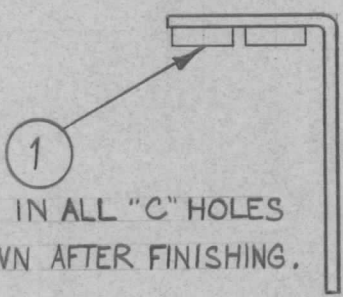
REQ. PER. UNIT	USED ON			MS-2607
	MODEL	ASS'Y. NO.	DATE	
1	CHG-2	OVEN	6-2-61	



A ~ $\frac{7}{64}$ DIA. 1 REQ.
 B ~ $\frac{9}{32}$ DIA. 2 "
 C ~ .161-.164 DIA. 2 "



MOUNT INSERTS AFTER FINISHING
 USE MATERIAL THICKNESS FOR MAX. RADIUS
 ON ALL BENDS UNLESS OTHERWISE SPECIFIED



MOUNT IN ALL "C" HOLES
 AS SHOWN AFTER FINISHING.

UNLESS OTHERWISE SPECIFIED
 DIMENSIONS ARE IN INCHES AND INCLUDE
 CHEMICALLY APPLIED OR PLATED FINISHES

DECIMALS	FRACTIONS
.X ± .05	± 1/64
.XX ± .01	ANGLES
.XXX ± .005	± 0° 30'

TOLERANCES

CUT HERE
 GUARANTEED
 2-66

2	1	NT-129-440-4	NUT, ROUND, SWAGE TYPE	
REQ.	ITEM	PART NO.	DESCRIPTION	SYMBOL
		.064	THE TECHNICAL MATERIEL CORP.	
		STOCK SIZE	MAMARONECK, NEW YORK	
		ALUMINUM	BRACKET, XTAL MOUNTING	
		MATERIAL		
		5052-H32	<i>W.G.F.</i>	<i>J.H.D.</i>
		TYPE & TEMPER	DRAWN	CHECKED
		HEAT TREAT. SPEC.	<i>S.D.</i>	<i>MS</i>
		FINISH & SPEC. NO.	ELEC. DES. APP	MECH. DES. APP
				MS-2607

ISSUE	ITEM	CHANGED FROM	DATE	CH. NO.	DRAFTS	CHECKER	ENG. APP.
		TOLERANCES	SCALE: FULL (DO NOT SCALE).				
DEC. DIM. ±			MAXIMUM ALLOWABLE TOLERANCES HAVE BEEN DETERMINED AND ANY DEVIATIONS WILL BE CAUSE FOR REJECTION.				
FRAC. DIM. ± 1/64			REMOVE ALL BURRS AND SHARP EDGES				
ANGULAR DIM. ±							