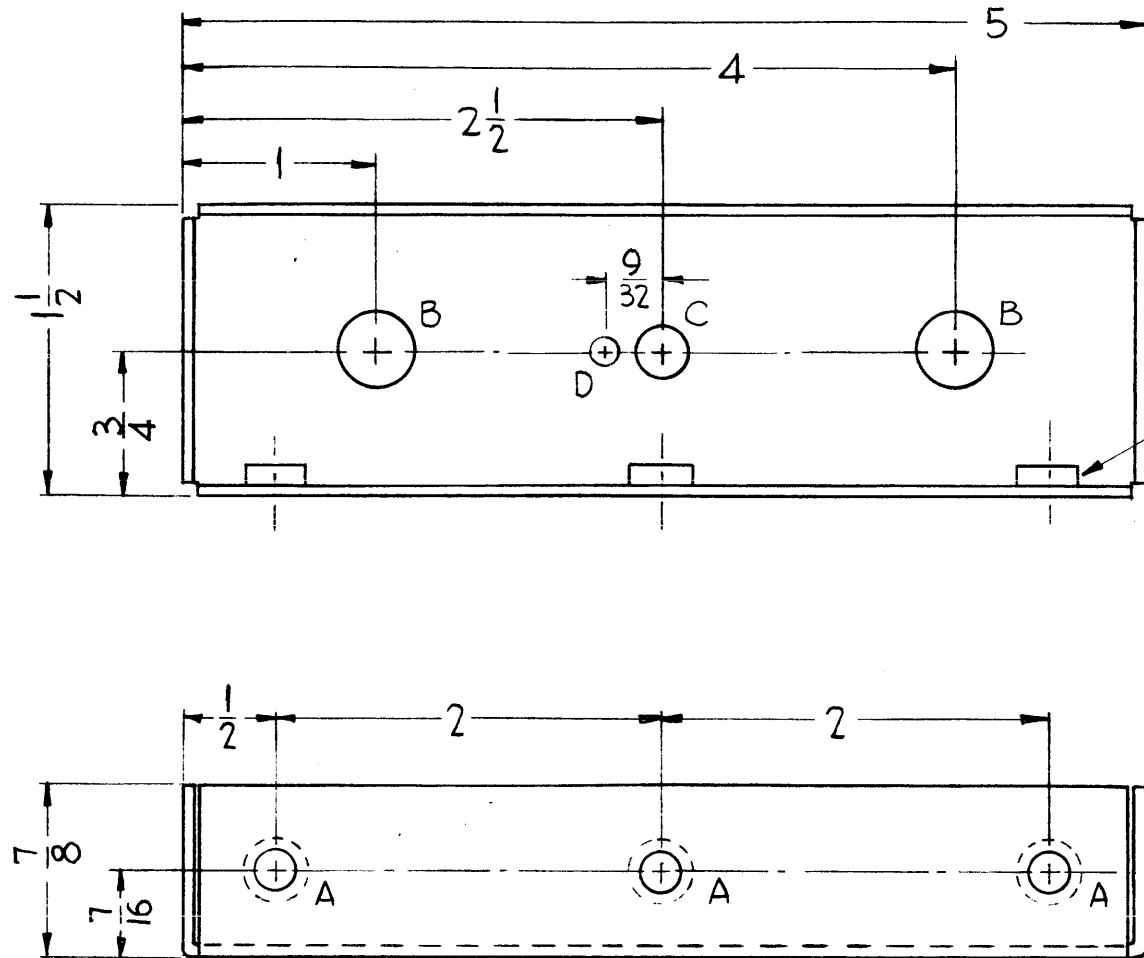
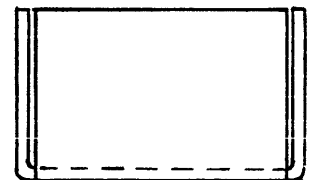


MS-2606 A



HOLES	REQ'D.
A ~ $\frac{191}{194}$ Dia. (To Mount Item 1)	3
B ~ $\frac{3}{8}$ Dia.	2
C ~ $\frac{1}{4}$ "	1
D ~ $\frac{1}{8}$ "	1

Mount Item 1
In "A" Holes As Shown



ALL PERSONS RECEIVING THIS DRAWING
THE TECHNICAL MATERIEL CORPORATION claims
proprietary right in the material disclosed hereon.
This drawing is issued in confidence for engineering
information only and may not be reproduced or used
to manufacture anything shown hereon without per-
mission from THE TECHNICAL MATERIEL CORPORA-
TION to the user. This drawing is loaned for mutual
assistance and is subject to recall at any time.

Property of:
THE TECHNICAL MATERIEL CORPORATION
MAMARONECK, NEW YORK

REF. ~LD-944

SYM	DESCRIPTION	DATE	CH. NO.	DRAFTS	CHECKER	ENG. APP.
A	A" Holes Were .164-.161	8-5-61	5389	G.D.L.	RU	16

UNLESS OTHERWISE SPECIFIED:
DIMENSIONS ARE IN INCHES
TOLERANCES ON FRACTIONS $\pm 1/64$ DECIMALS $\pm .005$ ANGLES $\pm 1/2^\circ$

SCALE:
MAXIMUM ALLOWABLE TOLERANCES HAVE BEEN DETERMINED AND ANY DEVIATIONS WILL BE CAUSE FOR REJECTION.
REMOVE ALL BURRS AND SHARP EDGES

REQ. PER UNIT	MODEL	SECTION	ASS'Y. NO.	DATE
	PS-4A			6-7-61

USED ON

REQ.	ITEM	PART NO.	DESCRIPTION	SYMBOL
3	1	NT-129-632-4	Nut, Round, Swage Type	
.064			THE TECHNICAL MATERIEL CORP. MAMARONECK, NEW YORK	
ALUMINUM			CHASSIS, POTENTIOMETER ASS'Y.	
5052-H32			D.P. Mammone	Ron Koh
TYPE & TEMPER		HEAT TREAT. SPEC.	DRAWN	CHECKER
YEL IRIDITE S404			RK	
FINISH & SPEC. NO.		ELEC. DES. APP.	MECH. DES. APP.	
				MS-2606 A