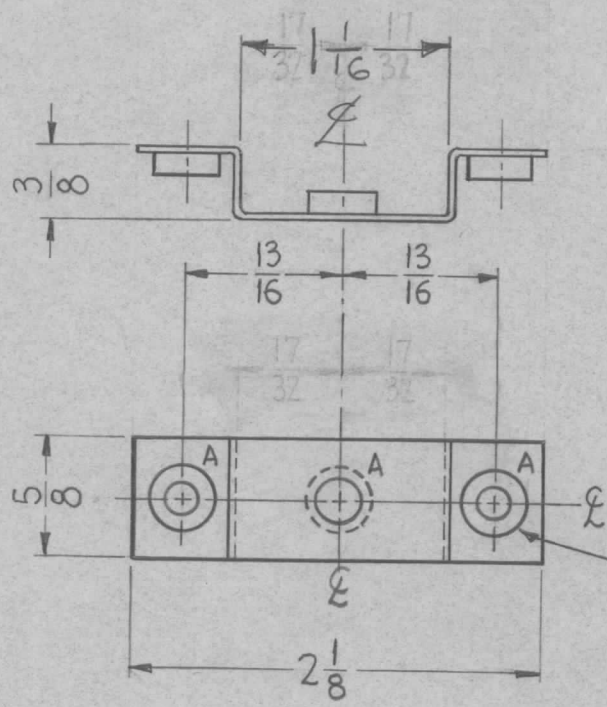


REQ. PER. UNIT	USED ON			MS-2600
	MODEL	ASS'Y. NO.	DATE	
	GPT-40K	AX-244	5-25-61	

HOLES
 A ~ $\frac{.253}{.250}$ D. For Mounting Item 1
 REQ'D. 3



① MOUNT INSERTS AFTER FINISHING.

UNLESS OTHERWISE SPECIFIED DIMENSIONS ARE IN INCHES AND INCLUDE CHEMICALLY APPLIED OR PLATED FINISHES		
DECIMALS	TOLERANCES	FRACTIONS
.X ± .05		± 1/64
.XX ± .01		ANGLES
.XXX ± .005		± 0° 30'

CUT HERE
 GUARANTEED
 2-56

REF. MS-1990

								3	1	NT-129-1032-3	NUT, ROUND, SWAGE TYPE						
								REQ. ITEM	PART NO.		DESCRIPTION		SYMBOL				
								.081		THE TECHNICAL MATERIEL CORP.							
								STOCK SIZE		MAMARONECK, NEW YORK							
								ALUMINUM		BRACKET, RETAINER, OUTPUT STRAP							
								MATERIAL									
										D.D. Mann		J. De		SOS			
								TYPE & TEMPER		HEAT TREAT. SPEC.		DRAWN		CHECKED		FINAL APPROVAL	
								S-404 IRIDITE								MS-2600	
								FINISH & SPEC. NO.		ELEC. DES. APP		MECH. DES. APP					
ISSUE ITEM				CHANGED FROM				DATE		CH. NO.		DRAFTS		CHECKER		ENG. APP.	
TOLERANCES								SCALE:									
DEC. DIM. ±								MAXIMUM ALLOWABLE TOLERANCES HAVE BEEN DETERMINED AND ANY DEVIATIONS WILL BE CAUSE FOR REJECTION. REMOVE ALL BURRS AND SHARP EDGES									
FRAC. DIM. ±																	
ANGULAR DIM. ±																	