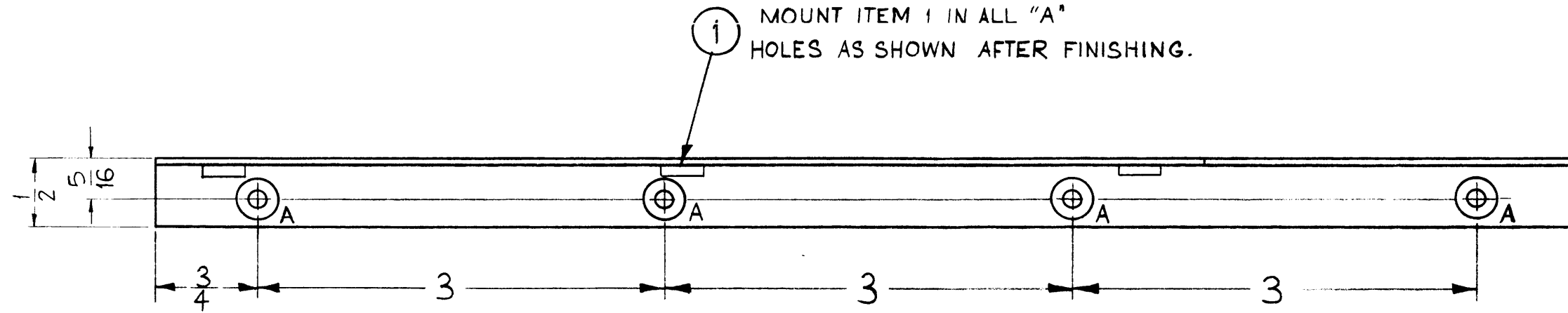
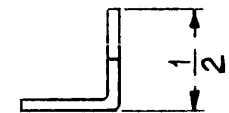
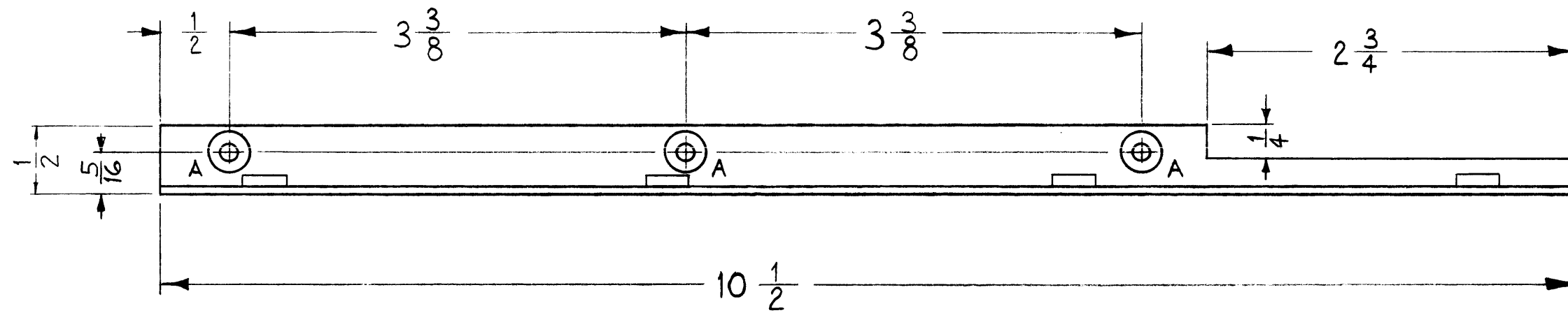


MS-2599



A ~ .161-.164 DIA. 7 REQ.



MOUNT INSERTS AFTER FINISHING  
 USE MATERIAL THICKNESS FOR MAX. RADIUS  
 ON ALL BENDS UNLESS OTHERWISE SPECIFIED

SYM	DESCRIPTION	DATE	CH. NO.	DRAFTS	CHECKER	ENG. APP.
UNLESS OTHERWISE SPECIFIED:						
DIMENSIONS ARE IN INCHES		SCALE: (DO NOT SCALE)				
TOLERANCES ON FRACTIONS ± 1/64 DECIMALS ± .005 ANGLES ± 1/2°		MAXIMUM ALLOWABLE TOLERANCES HAVE BEEN DETERMINED AND ANY DEVIATIONS WILL BE CAUSE FOR REJECTION. REMOVE ALL BURRS AND SHARP EDGES				

REQ. PER UNIT	MODEL	SECTION	ASS'Y. NO.	DATE
1	CHG-2	I.F.		5-23-61
USED ON				

7	1	NT-129-440-4	NUT, ROUND, SWAGE TYPE	
REQ.	ITEM	PART NO.	DESCRIPTION	
			SYMBOL	
		.064	THE TECHNICAL MATERIEL CORP.	
		STOCK SIZE	MAMARONECK, NEW YORK	
		ALUMINUM	BRACKET, MOUNTING, I.F. CHASSIS	
		MATERIAL		
		5052-H32	W.A.F.	JCB
		TYPE & TEMPER	DRAWN	CHECKER
		HEAT TREAT. SPEC.	FINAL APPROVAL	
		S404-YELLOW IRIDITE	J.D.	MS-2599
		FINISH & SPEC. NO.	ELEC. DES. APP.	MECH. DES. APP.