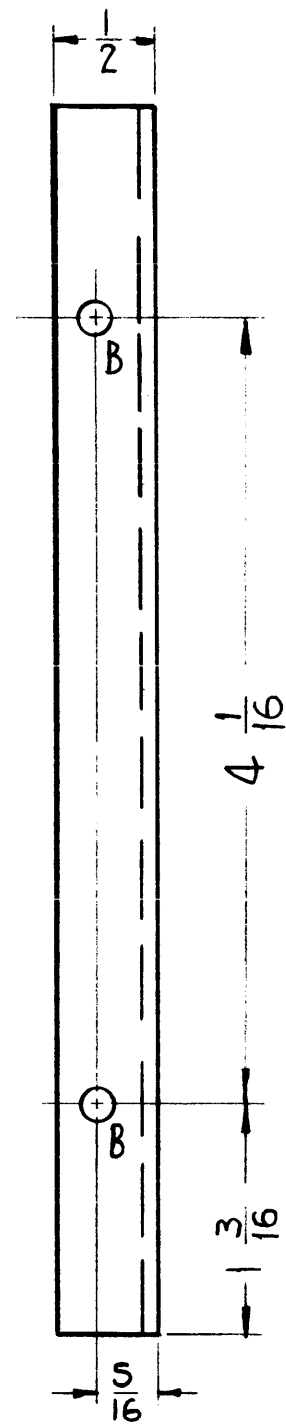
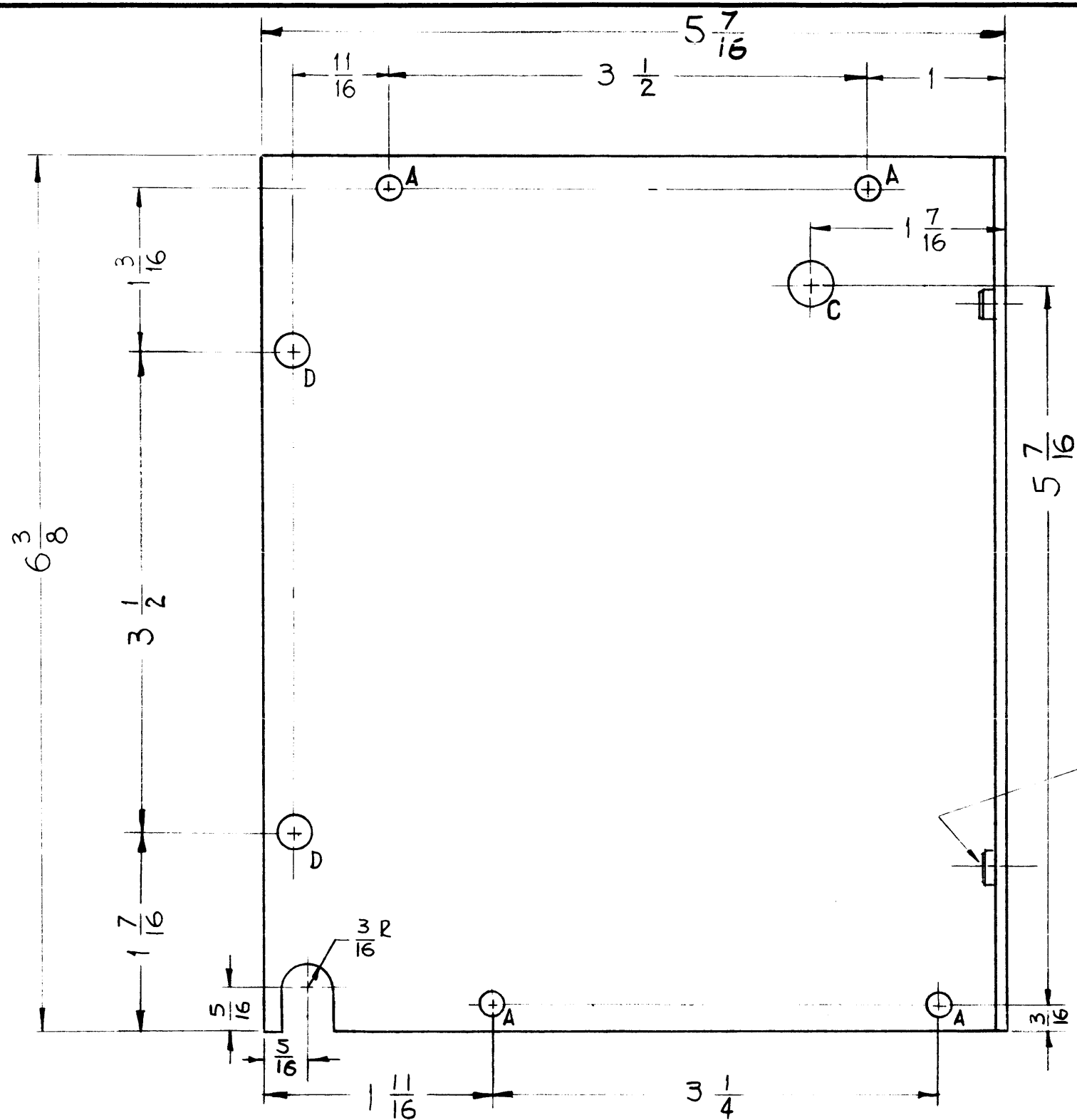


MS-2591



- A -  $\frac{5}{32}$  DIA. — 4 REQ
- B - .191 - .194 — 2 REQ
- C -  $\frac{5}{16}$  DIA — 1 REQ
- D -  $\frac{1}{4}$  DIA — 2 REQ

PROPERTY OF THE TECHNICAL MATERIEL CORPORATION  
 THE TECHNICAL MATERIEL CORPORATION claims  
 copyright in this drawing. No part of this  
 drawing may be reproduced for engineering  
 information purposes without the written  
 permission of THE TECHNICAL MATERIEL CORPORA-  
 TION to the user. This drawing is loaned for mutual  
 assistance and is subject to recall at any time.

Property of:  
 THE TECHNICAL MATERIEL CORPORATION  
 MAMARONECK, NEW YORK

- NOTES —
- 1- MOUNT INSERTS AFTER FINISHING.
  - 2- USE MATERIAL THICKNESS FOR MAX. RADIUS ON BEND, UNLESS OTHERWISE SPECIFIED.

1  
 SEE NOTE-1

2	1	NT-129-632-4	NUT ROUND, SWAGE TYPE	B
REQ.	ITEM	PART NO.	DESCRIPTION	SYMBOL
		.064	THE TECHNICAL MATERIEL CORP. MAMARONECK, NEW YORK	
		ALUMINUM	TOP COVER, OVEN	
		5052-H32	RUTZB	
		S404 YELLOW IRIDITE	JCH	
		5-24-61	JCH	
		MS-2591		

SYM	DESCRIPTION	DATE	CH. NO.	DRAFTS	CHECKER	ENG. APP.
	UNLESS OTHERWISE SPECIFIED: DIMENSIONS ARE IN INCHES TOLERANCES ON FRACTIONS $\pm 1/64$ DECIMALS $\pm .005$ ANGLES $\pm 1/20^\circ$	SCALE: DO NOT SCALE MAXIMUM ALLOWABLE TOLERANCES HAVE BEEN DETERMINED AND ANY DEVIATIONS WILL BE CAUSE FOR REJECTION. REMOVE ALL BURRS AND SHARP EDGES				

REQ. PER UNIT	MODEL	SECTION	ASS'Y. NO.	DATE
1	CHG-2	OVEN	OVEN/OSC	5-24-61