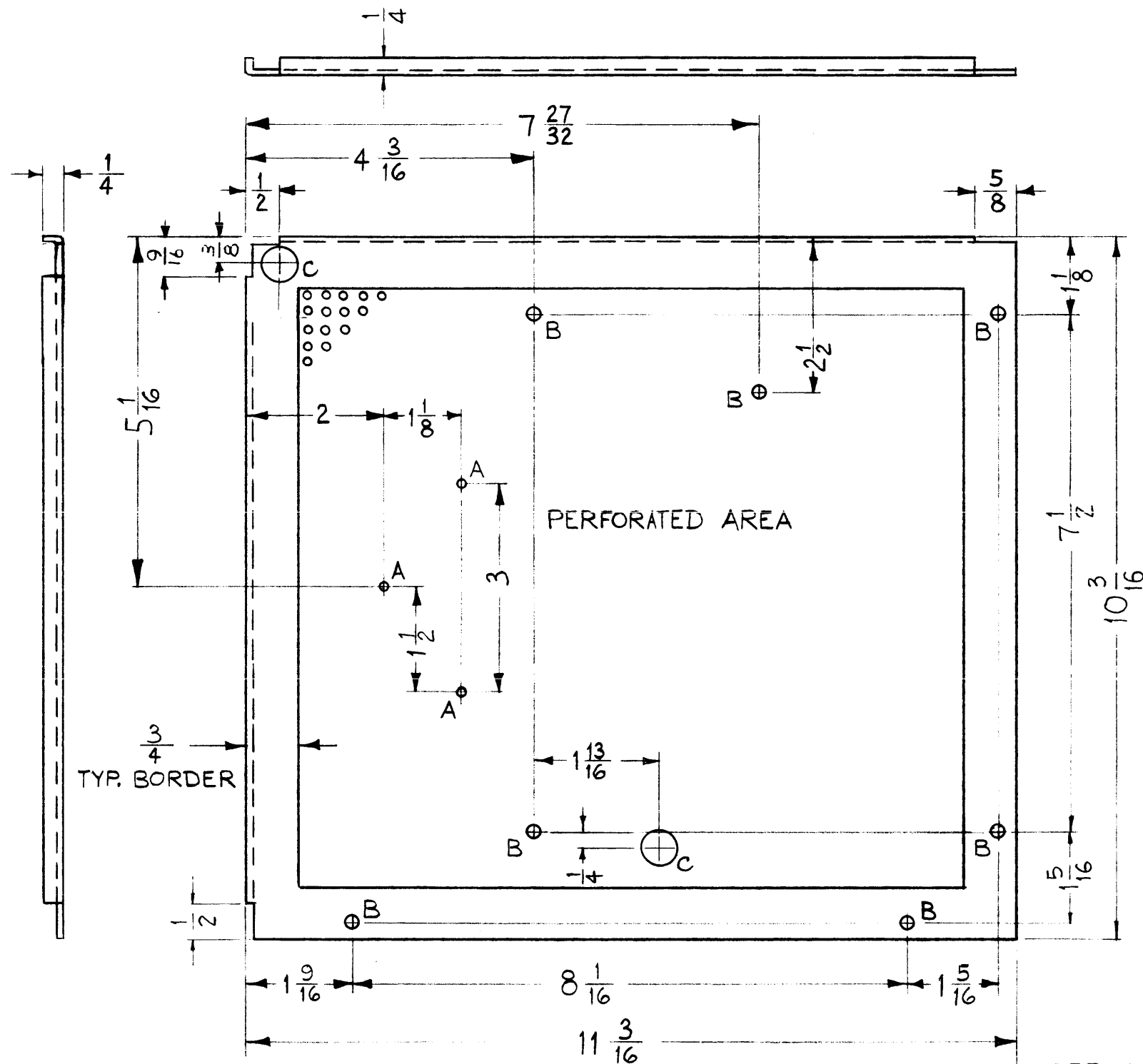


MS-2582 A



A ~ .128 DIA. 3 REQ.
 B ~ 3/16 DIA. 7 "
 C ~ 1/2 DIA. 2 "

NOTICE TO PERSONS RECEIVING THIS DRAWING

THE TECHNICAL MATERIEL CORPORATION claims proprietary right in the material disclosed hereon. This drawing is issued in confidence for engineering information only and may not be reproduced or used to manufacture anything shown hereon without permission from THE TECHNICAL MATERIEL CORPORATION to the user. This drawing is loaned for mutual assistance and is subject to recall at any time.

Property of:
 THE TECHNICAL MATERIEL CORPORATION
 MAMARONECK, NEW YORK

USE MATERIAL THICKNESS FOR MAX. RADIUS ON ALL BENDS UNLESS OTHERWISE SPECIFIED

REF: MS-1775-14

SYM	DESCRIPTION	DATE	CH. NO.	DRAFTS	CHECKER	ENG. APP.
A	9/16 DIM ADDED (LEFT CORNER)	3-22-62	6506	G. S.	<i>[Signature]</i>	<i>[Signature]</i>

UNLESS OTHERWISE SPECIFIED:
 DIMENSIONS ARE IN INCHES
 TOLERANCES ON FRACTIONS ± 1/64 DECIMALS ± .005 ANGLES ± 1/2°

SCALE: 2:1 (DO NOT SCALE)
 MAXIMUM ALLOWABLE TOLERANCES HAVE BEEN DETERMINED AND ANY DEVIATIONS WILL BE CAUSE FOR REJECTION.
 REMOVE ALL BURRS AND SHARP EDGES

REQ. PER UNIT	MODEL	SECTION	ASS'Y. NO.	DATE
1	CHG-2	MAIN		5-23-61

USED ON

REQ.	ITEM	PART NO.	DESCRIPTION	SYMBOL
		.051	THE TECHNICAL MATERIEL CORP. MAMARONECK, NEW YORK	
		STOCK SIZE		
		ALUMINUM	COVER, TOP, R.F. SECTION	
		MATERIAL		
		5052-H32	<i>[Signature]</i> <i>[Signature]</i>	<i>[Signature]</i>
		TYPE & TEMPER	DRAWN	CHECKER
		HEAT TREAT. SPEC.	<i>[Signature]</i> <i>[Signature]</i>	FINAL APPROVAL
		5404-YELLOW IRIDITE		
		FINISH & SPEC. NO.	ELEC. DES. APP. MECH. DES. APP.	
			MS-2582	A