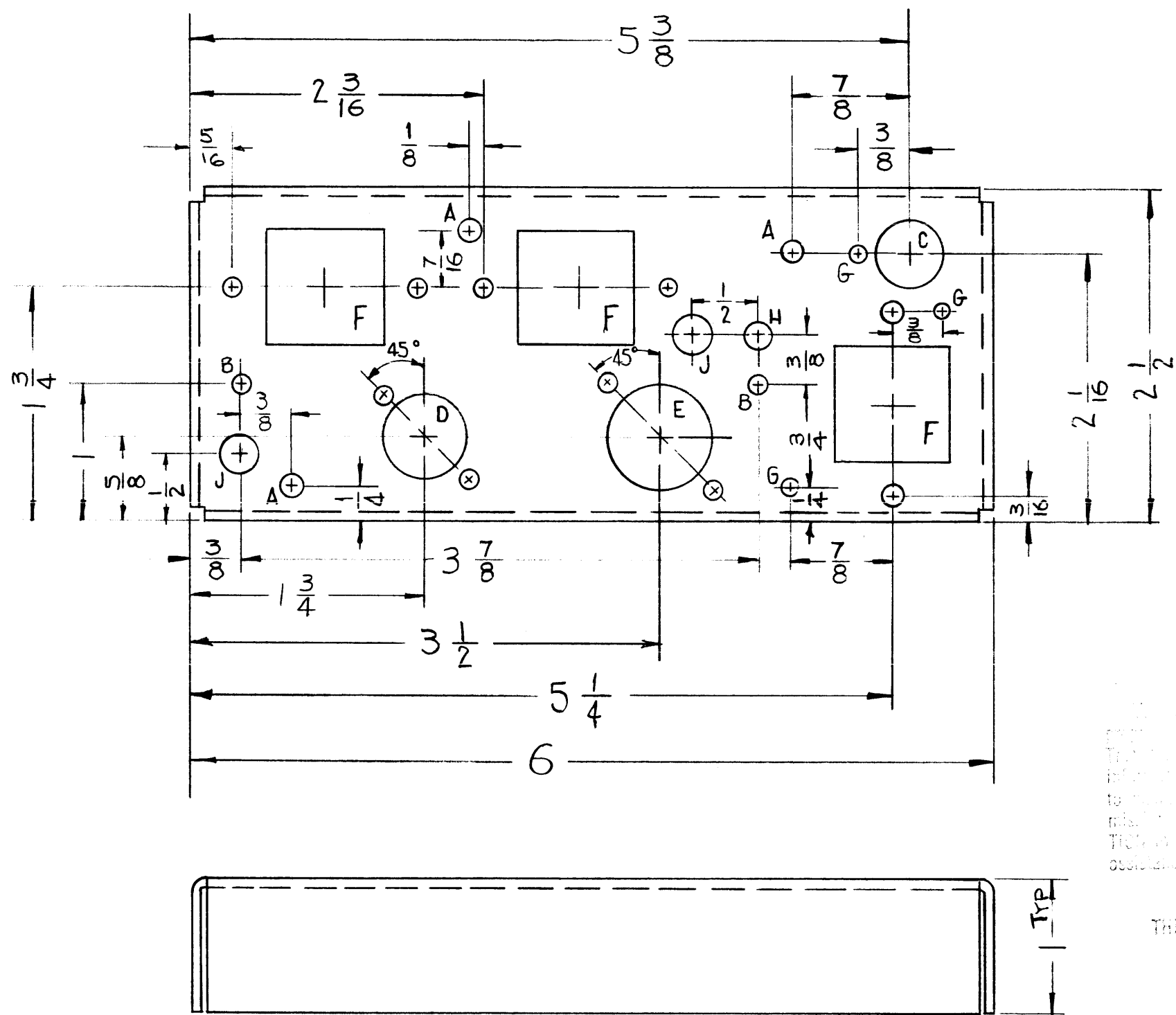
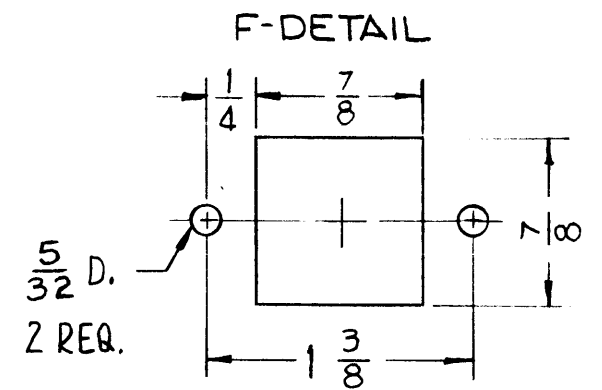
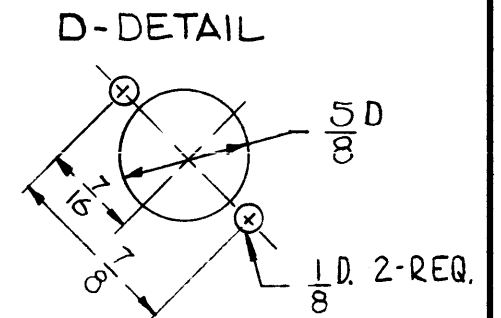
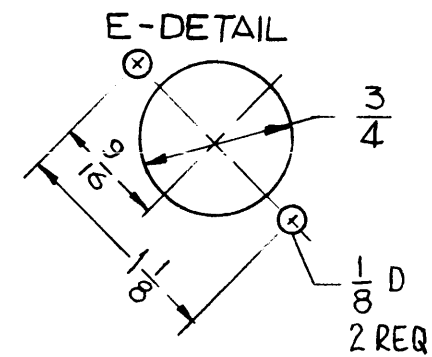


MS-2579



- A- $\frac{3}{16}$ DIA. _____ 3 REQ.
- B- $\frac{11}{64}$ DIA. _____ 2 REQ.
- C- $\frac{1}{2}$ DIA. _____ 1 REQ.
- D- SEE DETAIL _____ 1 REQ.
- E- SEE DETAIL _____ 1 REQ.
- F- SEE DETAIL _____ 3 REQ.
- G- $\frac{1}{8}$ DIA _____ 3 REQ.
- H- #18 DRILL _____ 1 REQ.
- J- $\frac{5}{16}$ DIA _____ 2 REQ.



THIS DRAWING IS THE PROPERTY OF THE TECHNICAL MATERIAL CORPORATION. IT IS TO BE USED FOR THE MANUFACTURE OF THE DIVIDER DESCRIBED HEREIN ONLY. IT IS NOT TO BE REPRODUCED OR USED FOR ANY OTHER PURPOSE WITHOUT THE WRITTEN PERMISSION OF THE TECHNICAL MATERIAL CORPORATION. THE TECHNICAL MATERIAL CORPORATION, MAMARONECK, NEW YORK.

MOUNT INSERTS AFTER FINISHING
USE MATERIAL THICKNESS FOR MAX. RADIUS
ON ALL BENDS UNLESS OTHERWISE SPECIFIED

REF-LD-921 (2)

SYM	DESCRIPTION	DATE	CH. NO.	DRAFTS	CHECKER	ENG. APP.
UNLESS OTHERWISE SPECIFIED:						
DIMENSIONS ARE IN INCHES		SCALE:				
TOLERANCES ON FRACTIONS $\pm 1/64$ DECIMALS $\pm .005$ ANGLES $\pm 1/2^\circ$		MAXIMUM ALLOWABLE TOLERANCES HAVE BEEN DETERMINED AND ANY DEVIATIONS WILL BE CAUSE FOR REJECTION. REMOVE ALL BURRS AND SHARP EDGES				
1	CHG-2					5-23-61
REQ. PER UNIT	MODEL	SECTION	ASS'Y. NO.	DATE	USED ON	

REQ.	ITEM	PART NO.	DESCRIPTION	SYMBOL
		.064	THE TECHNICAL MATERIAL CORP. MAMARONECK, NEW YORK	
		STOCK SIZE	CHASSIS, DIVIDER	
		ALUMINUM		
		MATERIAL		
		5052-H32	R. UZZO	
		TYPE & TEMPER	DRAWN	CHECKER
		HEAT TREAT. SPEC.		FINAL APPROVAL
		S404 YELLOW IRIDITE		
		FINISH & SPEC. NO.	ELEC. DES. APP.	MECH. DES. APP.
				MS-2579