

- A ~ 5/32 DIA. 4 REQ.
- B ~ 13/64 DIA. 2 "
- C ~ .191-.194 DIA. 13 "
- D ~ 3/4 DIA. 1 "
- E ~ .189 DIA. 2 "

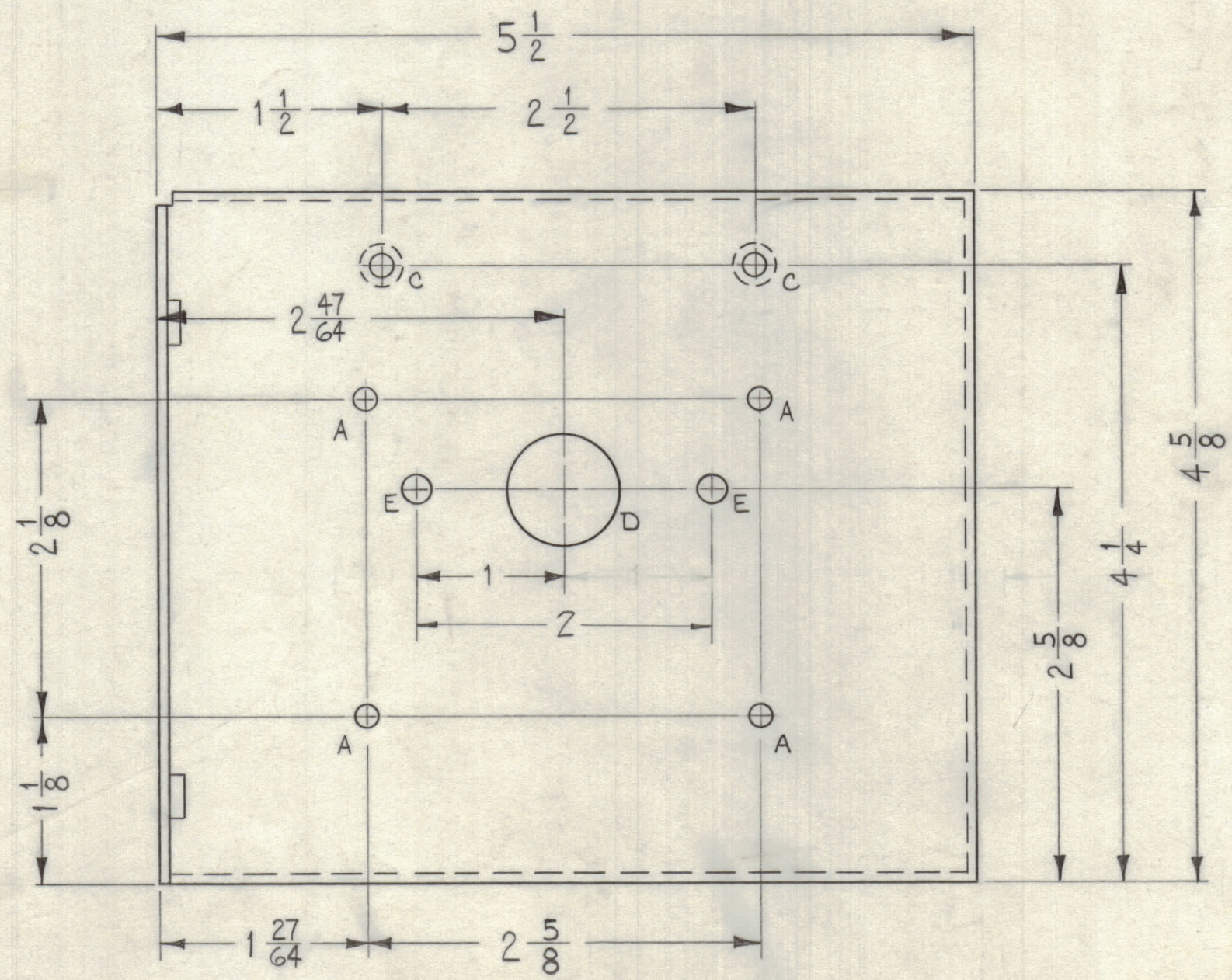
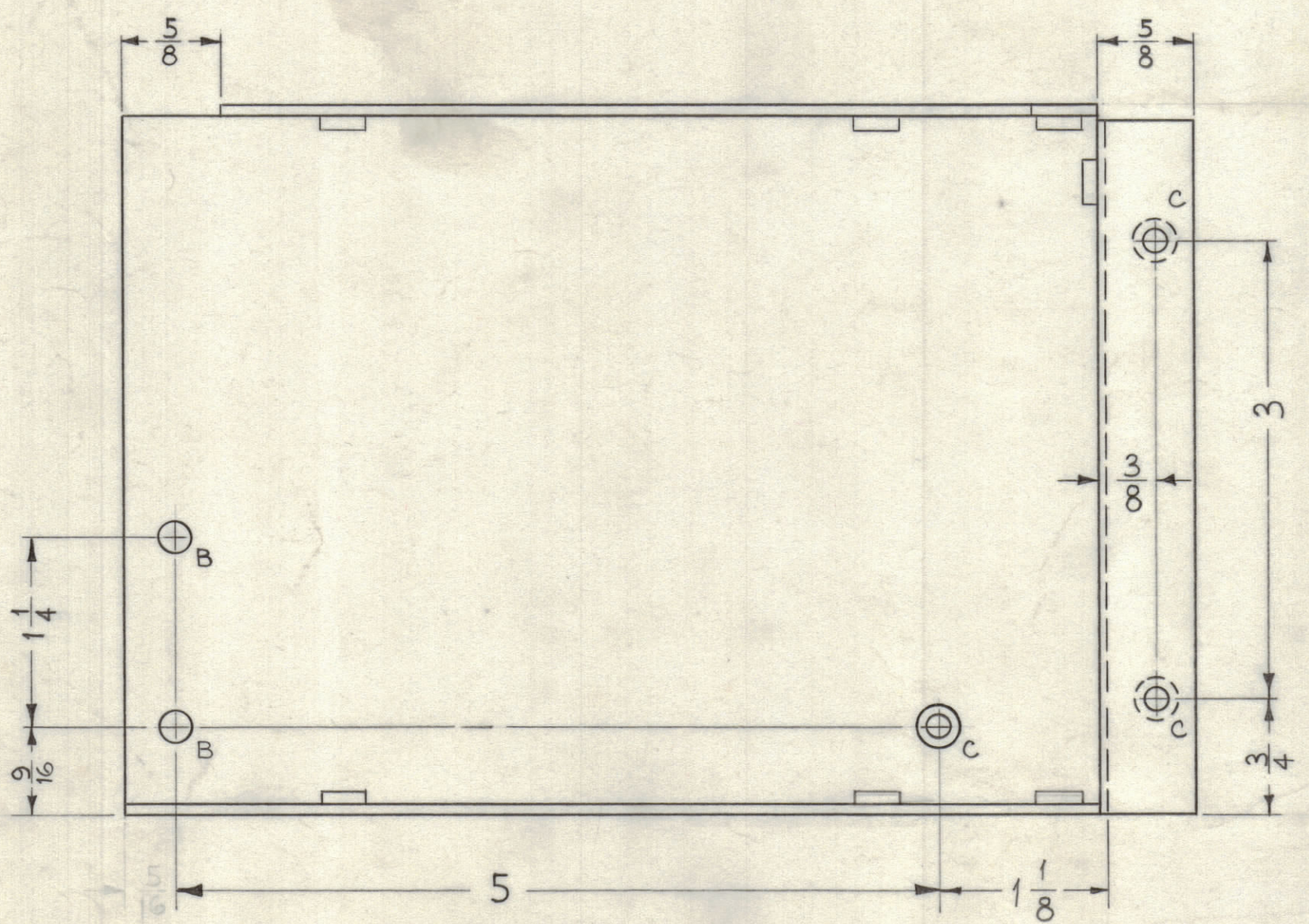
2 MOUNT ITEM 2 IN ALL "E" HOLES AS SHOWN. AFTER FINISHING

1 MOUNT ITEM 1 IN ALL "C" HOLES AS SHOWN. AFTER FINISHING.

**NOTICE TO PERSONS RECEIVING THIS DRAWING**

THE TECHNICAL MATERIEL CORPORATION claims proprietary right in the material disclosed herein. This drawing is issued in confidence for engineering information only and may not be reproduced or used to manufacture anything shown hereon without permission from THE TECHNICAL MATERIEL CORPORATION to the user. This drawing is loaned for mutual assistance and is subject to recall at any time.

Property of:  
THE TECHNICAL MATERIEL CORPORATION  
MAMARONECK, NEW YORK



MOUNT INSERTS AFTER FINISHING

USE MATERIAL THICKNESS FOR MAX. RADIUS ON ALL BENDS UNLESS OTHERWISE SPECIFIED

UNLESS OTHERWISE SPECIFIED DIMENSIONS ARE IN INCHES AND INCLUDE CHEMICALLY APPLIED OR PLATED FINISHES	
DECIMALS	FRACTIONS
.X ± .05	± 1/64
.XX ± .01	± 1/64
.XXX ± .005	± 1/64
TOLERANCES	
ANGLES ± 5° 30'	

CUT HERE GUARANTEED 2-66

2	2	TE-164-1	STANDOFF, RIVET TYPE
13	1	NT-129-632-4	NUT, ROUND, SWAGE TYPE
REQ.	ITEM	PART NO.	DESCRIPTION
		.064	STOCK SIZE
		ALUMINUM	MATERIAL
		5052-H32	TYPE & TEMPER
		S404 YELLOW IRIDIOTE	FINISH & SPEC. NO.
		HEAT TREAT. SPEC.	
		DATE	
		ASS'Y. NO.	
		SECTION	
		MODEL	
		CHG-2	
		OVEN/OSC.	
		5-19-61	
		DATE	
		MECH. DES. APP.	
		ELEC. DES. APP.	
		SHEET	OF
		MS-2577	
		MECH. DES. APP.	
		ELEC. DES. APP.	
		FINAL APPROVAL	
		CHECKED	
		DRAWN	
		THE TECHNICAL MATERIEL CORP.	
		MAMARONECK, NEW YORK	
		SHELL, OUTER OVEN	

SYM	ZONE	DESCRIPTION	DATE	CH. NO.	DRAFTS	CHECKER	ENG. APP.
UNLESS OTHERWISE SPECIFIED:			SCALE FULL (DO NOT SCALE)				
DIMENSIONS ARE IN INCHES			MAXIMUM ALLOWABLE TOLERANCES HAVE BEEN DETERMINED AND ANY DEVIATIONS WILL BE CAUSE FOR REJECTION. REMOVE ALL BURRS & SHARP EDGES				
TOLERANCES ON							
FRACTIONS ± 1/64			DECIMALS ± .005		ANGLES ± 1/2°		