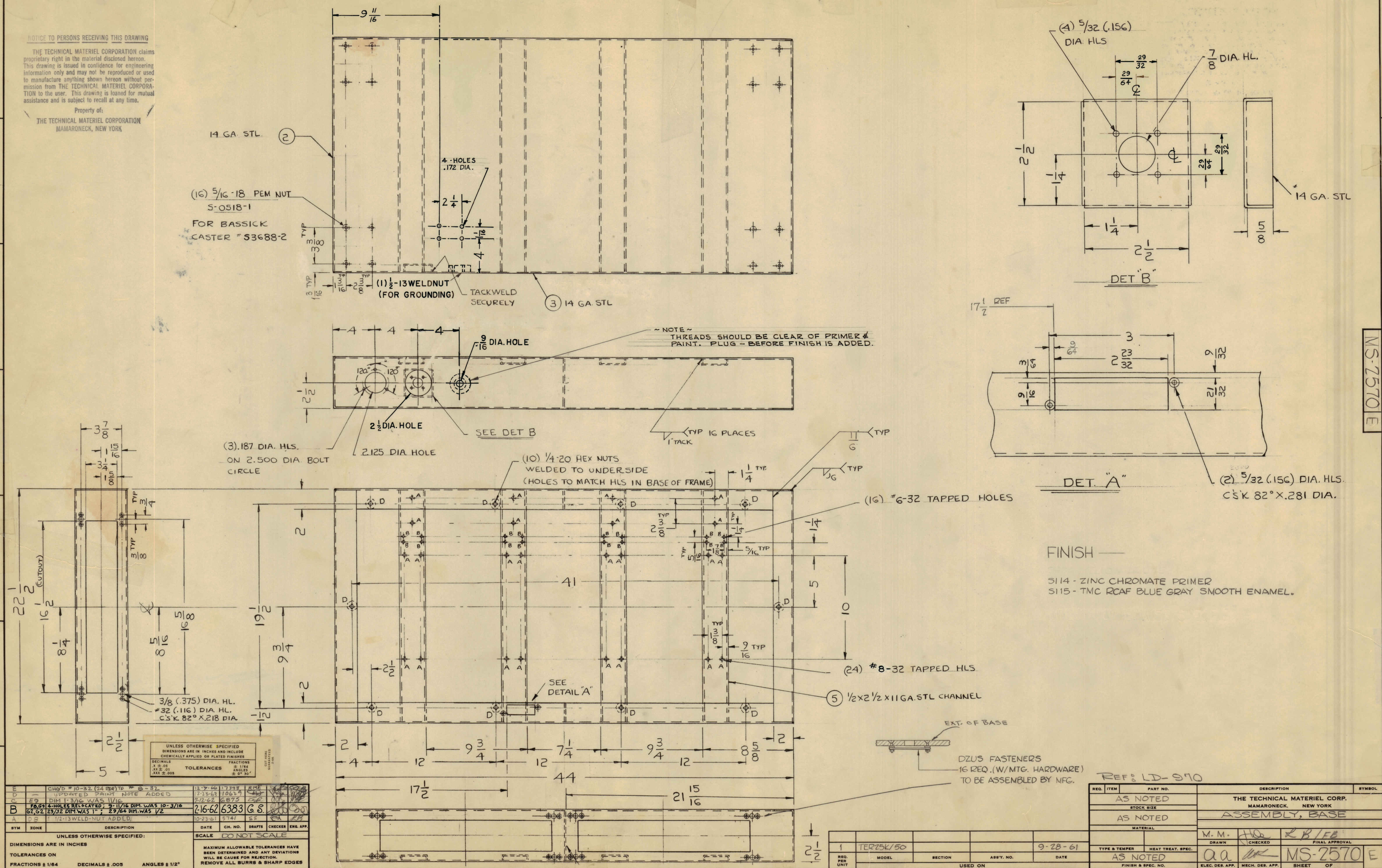


NOTICE TO PERSONS RECEIVING THIS DRAWING

THE TECHNICAL MATERIEL CORPORATION claims proprietary right in the material disclosed hereon. This drawing is issued in confidence for engineering information only and may not be reproduced or used to manufacture anything shown hereon without permission from THE TECHNICAL MATERIEL CORPORATION to the user. This drawing is loaned for mutual assistance and is subject to recall at any time.

Property of:
THE TECHNICAL MATERIEL CORPORATION
MAMARONECK, NEW YORK



UNLESS OTHERWISE SPECIFIED:		SCALE DO NOT SCALE	
DIMENSIONS ARE IN INCHES			
TOLERANCES ON			
FRACTIONS ± 1/64	DECIMALS ± .005	ANGLES ± 1/2°	

REV.	DESCRIPTION	DATE	CH. NO.	DRAFTS	CHECKER	ENG. APP.
E	CHG'D #10-32 (24 REQ) TO #8-32	12-2-66	117393	RME		
D	UPDATED PAINT NOTE ADDED	12-3-63	110629	CS		
C	DIM T3/16 WAS 1/16	9-22-62	6875	CS		
B	4 HOLES RELOCATED; 9-11/16 DIM. WAS 10-3/16	2-16-62	6383	GS		
A	29/32 DIM WAS 1"; 29/64 DIM WAS 1/2	10-23-61	5741	ES		

FINISH
5114 - ZINC CHROMATE PRIMER
5115 - TMC RCAF BLUE GRAY SMOOTH ENAMEL.

REQ. UNIT	ITEM	PART NO.	DESCRIPTION	SYMBOL
	AS NOTED		THE TECHNICAL MATERIEL CORP. MAMARONECK, NEW YORK	
	AS NOTED		ASSEMBLY, BASE	
	AS NOTED		M. M. <i>[Signature]</i> & B. J. <i>[Signature]</i>	
	AS NOTED		QA <i>[Signature]</i>	
	AS NOTED		MS-2570 E	

MS-2570 E