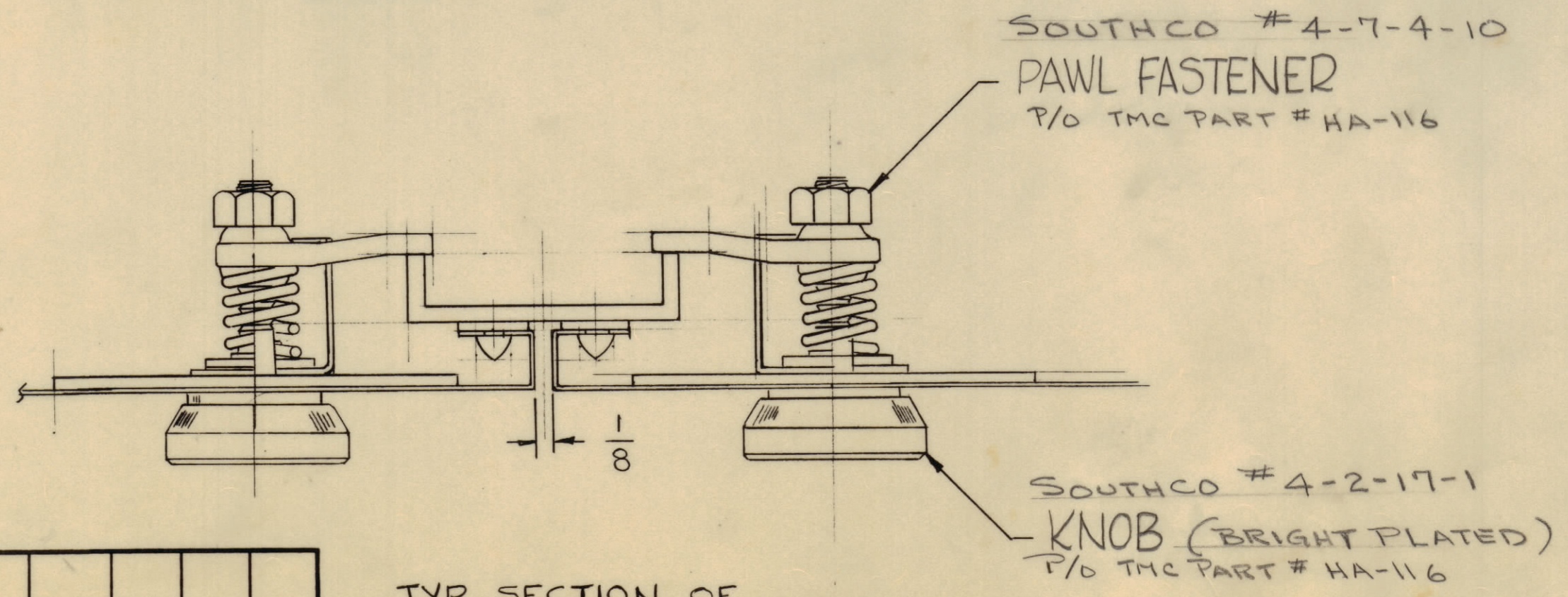
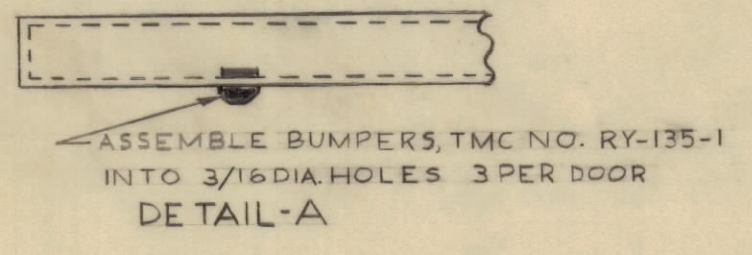


NOTICE TO PERSONS RECEIVING THIS DRAWING

THE TECHNICAL MATERIEL CORPORATION claims proprietary right in the material disclosed herein. This drawing is issued in confidence for engineering information only and may not be reproduced or used to manufacture anything shown hereon without permission from THE TECHNICAL MATERIEL CORPORATION to the user. This drawing is loaned for mutual assistance and is subject to recall at any time.

Property of:
THE TECHNICAL MATERIEL CORPORATION
MAMARONECK, NEW YORK



MAT. IS 20 GA. STL UNLESS OTHERWISE NOTED

FINISH —

S114 ~ ZINC CHROMATE PRIMER

S220 ~ TMC RCAF BLUE GRAY SMOOTH ENAMEL

TMC PART NO	DESCRIPTION
MS-2569-2	RIGHT SIDE SHOWN
MS-2569-1	LEFT SIDE OPPOSITE

UNLESS OTHERWISE SPECIFIED DIMENSIONS ARE IN INCHES AND INCLUDE CHEMICALLY APPLIED OR PLATED FINISHES

DECIMALS	FRACTIONS
± .05	± 1/64
± .01	± 1/32
± .005	± 0° 30'

TOLERANCES

A	66T	.208 X .312 Oval Slots W/ 1/4 Dia. Holes	1-4-62	6161	JL	MS	
SYM	ZONE	DESCRIPTION	DATE	CH. NO.	DRAFTS	CHECKER	ENG. APP.
UNLESS OTHERWISE SPECIFIED:			SCALE DO NOT SCALE				
DIMENSIONS ARE IN INCHES			MAXIMUM ALLOWABLE TOLERANCES HAVE BEEN DETERMINED AND ANY DEVIATIONS WILL BE CAUSE FOR REJECTION. REMOVE ALL BURRS & SHARP EDGES				
TOLERANCES ON FRACTIONS ± 1/64			DECIMALS ± .005				
			ANGLES ± 1/2°				

REQ. ITEM	PART NO.	DESCRIPTION	SYMBOL
AS NOTED		THE TECHNICAL MATERIEL CORP. MAMARONECK, NEW YORK	
AS NOTED		DOORS RIGHT AND LEFT	
		MATERIAL	
		M.A.M.	
		DRWN	
		CHECKED	
		FINAL APPROVAL	
		MS-2569	
		ELEC. DES. APP.	
		MECH. DES. APP.	
		SHEET	
		OF	

1	TER25K/50			9-28-61
REQ. PER UNIT	MODEL	SECTION	ASSY. NO.	DATE
	USED ON			
	FINISH & SPEC. NO.			

MS-2569