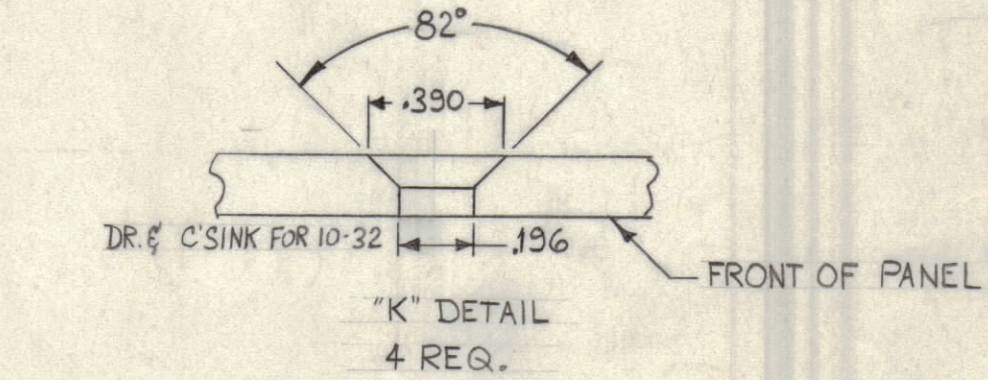
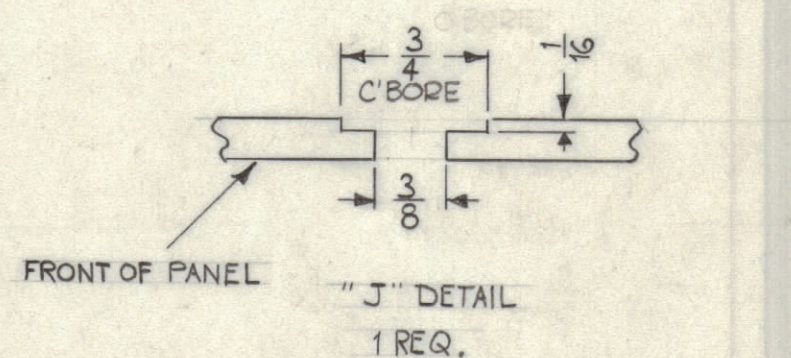
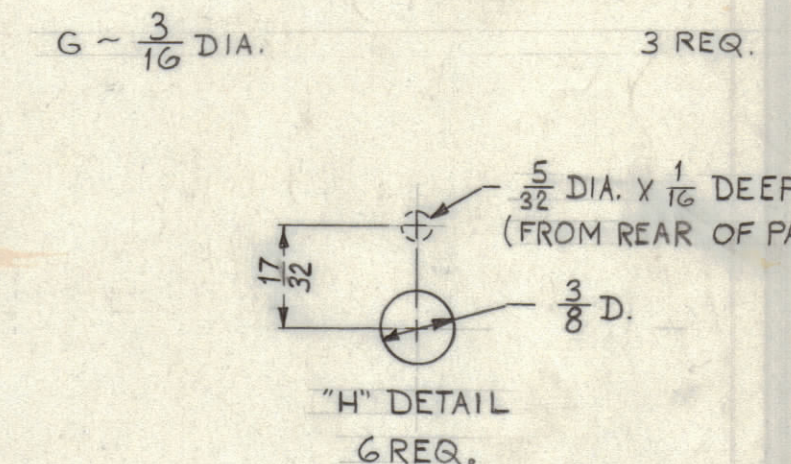
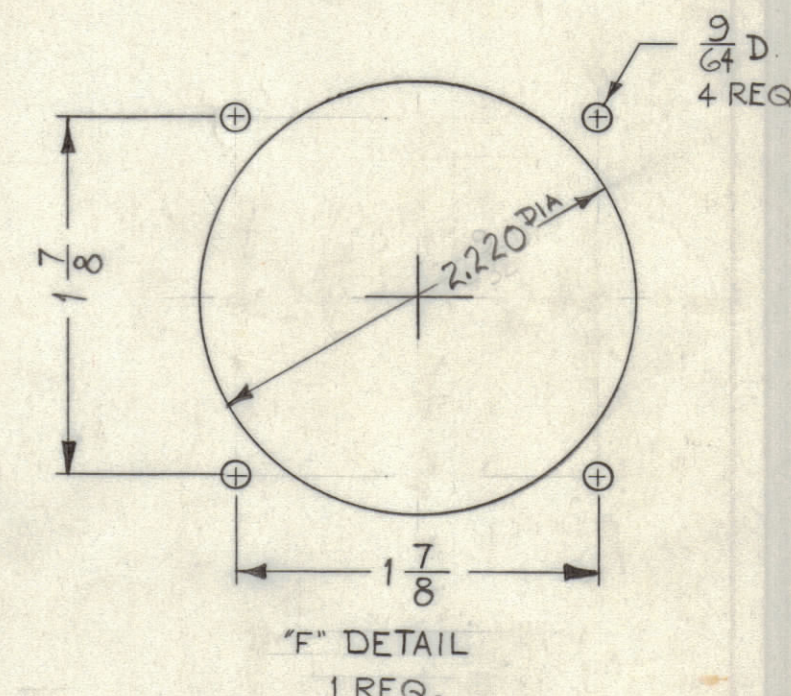
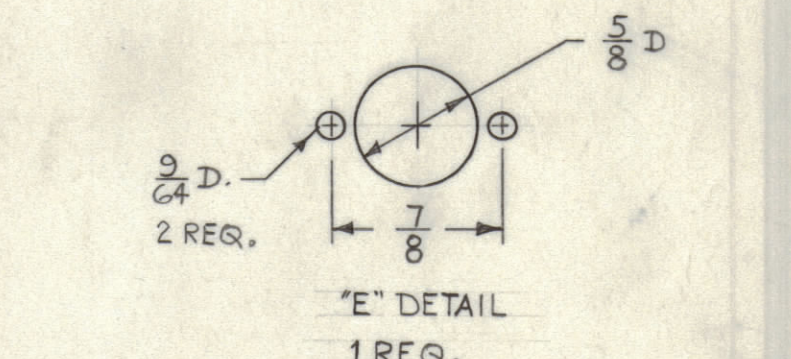
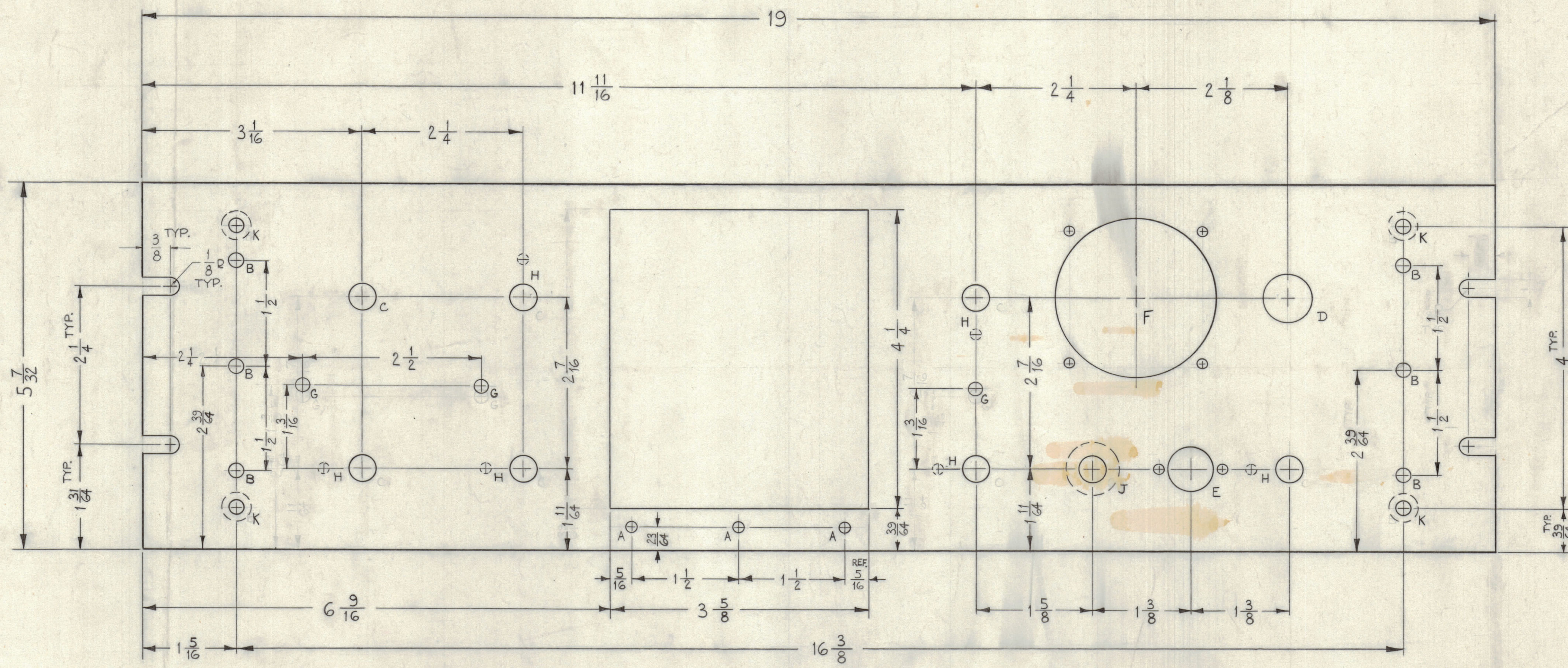


NOTICE TO PERSONS RECEIVING THIS DRAWING

THE TECHNICAL MATERIEL CORPORATION claims proprietary right in the material disclosed herein. This drawing is issued in confidence for engineering information only and may not be reproduced or used to manufacture anything shown herein without permission from THE TECHNICAL MATERIEL CORPORATION to the user. This drawing is loaned for mutual assistance and is subject to recall at any time.

Property of:  
THE TECHNICAL MATERIEL CORPORATION  
MAMARONECK, NEW YORK

- A - 5/32" DIA. 3 REQ.
- B - 13/64" DIA. 6 "
- C - 3/8" DIA. 1 "
- D - 11/16" DIA. 1 "



MACHINING ~  
 1- LATERAL BOW OF PANEL MUST BE KEPT TO .031 TOLERANCE.  
 2- MILL ALL EDGES.  
 3- HOLES MUST BE DRILLED.  
 4- PANEL MUST BE FREE OF ALL MACHINING MARKS GOUGES & SCRATCHES.  
 IF NECESSARY SAND FRONT OF PANEL WITH NO. 120 GRIT SANDPAPER.

FINISH -  
 S404 YELLOW IRIDITE.  
 S114 ZINC CHROMATE PRIMER FRONT &  
 S115 TMC SMOOTH GREY ENAMEL EDGES ONLY

SYM	ZONE	DESCRIPTION	DATE	CH. NO.	DRAFTS	CHECKER	ENG. APP.
A	E1	"F" DETAIL: 2.220 DIA. WAS 2 9/32.	2-16-65	13489			

UNLESS OTHERWISE SPECIFIED:  
 DIMENSIONS ARE IN INCHES  
 TOLERANCES ON FRACTIONS ± 1/64 DECIMALS ± .005 ANGLES ± 1/2°

SCALE FULL (DO NOT SCALE)

MAXIMUM ALLOWABLE TOLERANCES HAVE BEEN DETERMINED AND ANY DEVIATIONS WILL BE CAUSE FOR REJECTION. REMOVE ALL BURRS & SHARP EDGES

REF: LD-916 (8)

REQ. PER UNIT	ITEM	MODEL	SECTION	ASSY. NO.	DATE	TYPE & TEMPER	HEAT TREAT. SPEC.	FINISH & SPEC. NO.	ELC. DES. APP.	MECH. DES. APP.	SHEET	OF
1	GPE-1				5-8-61	2024-T3						

REG. ITEM	PART NO.	DESCRIPTION	SYMBOL
3/16		THE TECHNICAL MATERIEL CORP. MAMARONECK, NEW YORK	
ALUMINUM		MACHINING, FRONT PANEL	

MS-2560

MS-2560 A