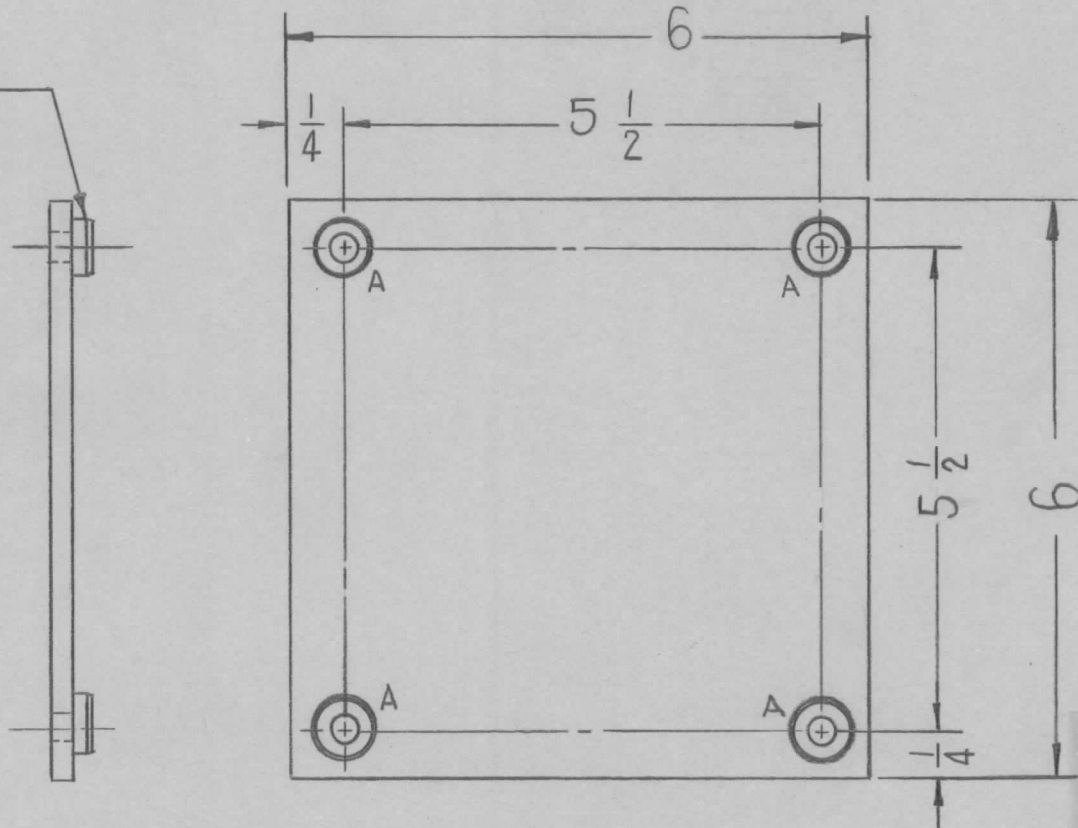


REQ. PER. UNIT	USED ON			MS-2555
	MODEL	ASS'Y. NO.	DATE	
1	ACU		4-18-61	

MOUNT IN ALL "A" HOLES AS SHOW AFTER FINISH



A-.224-.221 DIA - 4

UNLESS OTHERWISE SPECIFIED DIMENSIONS ARE IN INCHES AND INCLUDE CHEMICALLY APPLIED OR PLATED FINISHES		
DECIMALS	TOLERANCES	FRACTIONS
.X ± .05		± 1/64
.XX ± .01		ANGLES ± 0° 30'
.XXX ± .005		

CUT HERE
GUARANTEED
2-66

4 1 NT-729-832-4 NUT ROUND, SWAGE TYPE A

REQ.	ITEM	PART NO.	DESCRIPTION	SYMBOL					
		16 GA	THE TECHNICAL MATERIEL CORP. MAMARONECK, NEW YORK	COVER PLATE					
		STOCK SIZE							
		STEEL							
		MATERIAL							
ISSUE	ITEM	CHANGED FROM	DATE	CH. NO.	DRAFTS	CHECKER	ENG. APP.		
TOLERANCES			SCALE: Do Not Scale						
DEC. DIM. ±			MAXIMUM ALLOWABLE TOLERANCES HAVE BEEN DETERMINED AND ANY DEVIATIONS WILL BE CAUSE FOR REJECTION. REMOVE ALL BURRS AND SHARP EDGES						
FRAC. DIM. ±									
ANGULAR DIM. ±									
TYPE & TEMPER		HEAT TREAT. SPEC.		DRAWN		CHECKED		FINAL APPROVAL	
S220 RCAF BLUE				R. V. 220		J. H. C.		O. B.	
FINISH & SPEC. NO.		ELEC. DES. APP		MECH. DES. APP		MS-2555			