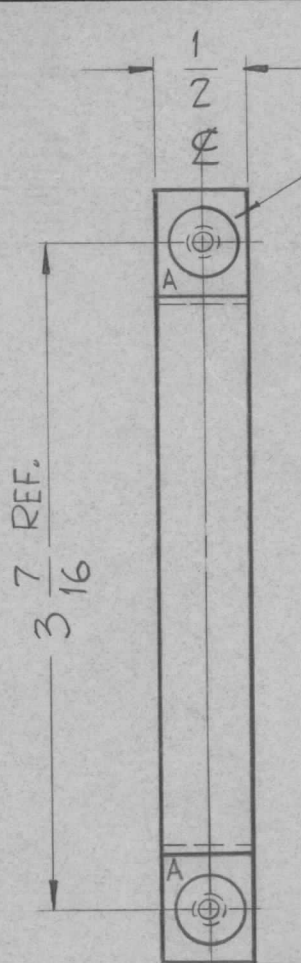
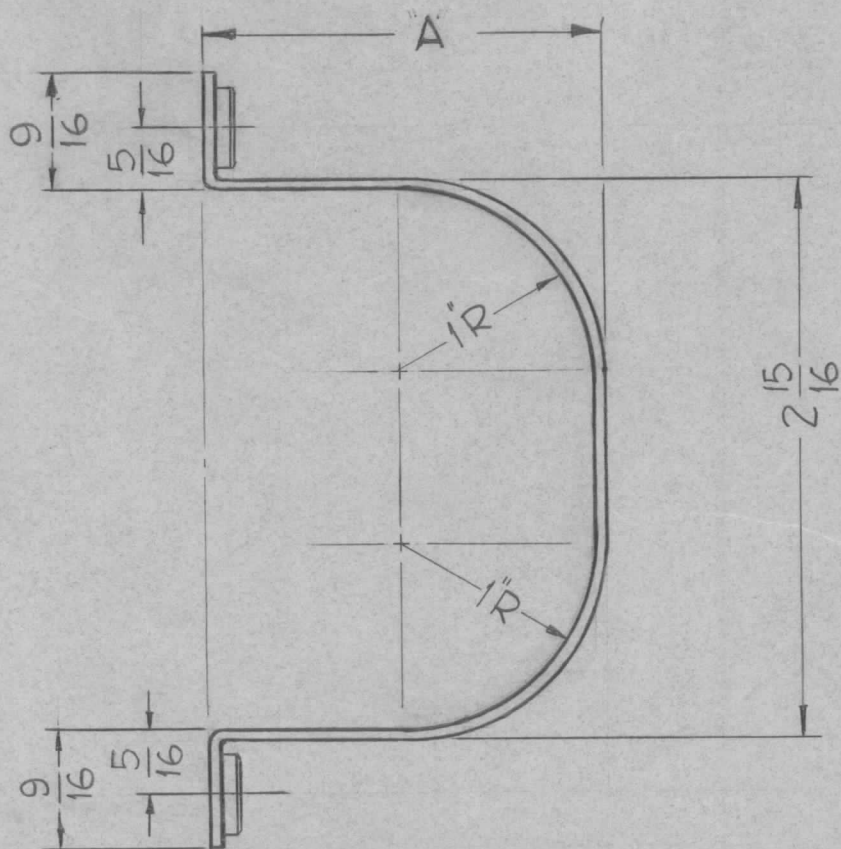


| | |
|--------------|-----------|
| TMC PART No. | DIMENSION |
| MS2544-1 | A |
| MS2544-2 | 2 1/16 |
| | 1 9/16 |

| | | | |
|---------------|---------|------------|---------|
| REQ. PER UNIT | USED ON | | |
| | MODEL | ASS'Y. NO. | DATE |
| 2 | CPP-5 | | 3-28-61 |

MS2544-A



① MOUNT INSERTS AFTER FINISHING

HOLES:
 A-.221 MIN. DIA. — 2 Req.
 .224 MAX. DIA.

NOTE: USE MATERIAL THICKNESS FOR MAX. RADIUS ON ALL BENDS UNLESS OTHERWISE SPECIFIED

| | | | | | |
|------|------|-----------------------|------------------------------|--------------------|--------------------|
| 2 | 1 | NT-129-832-4 | NUT, ROUND, SWAGE TYPE | | |
| REQ. | ITEM | PART NO. | DESCRIPTION | | SYMBOL |
| | | .064 | THE TECHNICAL MATERIEL CORP. | | |
| | | STOCK SIZE | MAMARONECK, NEW YORK | | |
| | | ALUMINUM | BRACKET, CAPACITOR MTG. | | |
| | | MATERIAL | | | |
| | | 5052-H-32 | J.C. Biele | <i>[Signature]</i> | <i>[Signature]</i> |
| | | TYPE & TEMPER | DRAWN | CHECKED | FINAL APPROVAL |
| | | S404 - Yellow Iridite | | <i>[Signature]</i> | MS2544-A |
| | | FINISH & SPEC. NO. | ELEC. DES. APP. | MECH. DES. APP. | |

| | | | | | | | |
|-------------------|------|---|---|---------|--------|--------------------|-----------|
| ISSUE | ITEM | CHANGED FROM | DATE | CH. NO. | DRAFTS | CHECKER | ENG. APP. |
| A | | DIM "A" WAS 2 1/16 - TMC MS2544-2 ADDED | 5-22-67 | 18241 | G.D.L. | <i>[Signature]</i> | R.H.J. |
| TOLERANCES | | | SCALE: FULL, Do Not SCALE | | | | |
| DEC. DIM. ± | | | MAXIMUM ALLOWABLE TOLERANCES HAVE BEEN DETERMINED AND ANY DEVIATIONS WILL BE CAUSE FOR REJECTION. | | | | |
| FRAC. DIM. ± 1/64 | | | REMOVE ALL BURRS AND SHARP EDGES | | | | |
| ANGULAR DIM. ± | | | | | | | |