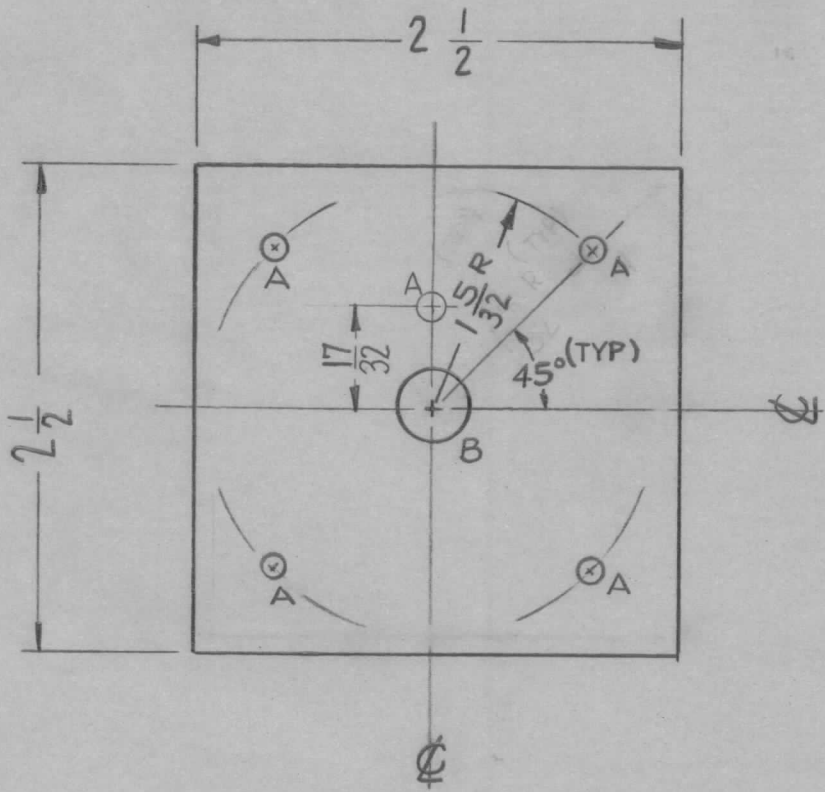


REQ. PER. UNIT	USED ON			MS-2534	A
	MODEL	ASS'Y. NO.	DATE		
1	PTE-3		2-23-61		



A-5/32 DIA 5 Req.
 B-3/8 DIA. 1 Req.

UNLESS OTHERWISE SPECIFIED DIMENSIONS ARE IN INCHES AND INCLUDE CHEMICALLY APPLIED OR PLATED FINISHES		
DECIMALS	TOLERANCES	FRACTIONS
.X ± .05		± 1/64
.XX ± .01		ANGLES
.XXX ± .005		± 0° 30'

CUT HERE
 GUARANTEED
 2-66

ISSUE	ITEM	CHANGED FROM	DATE	CH. NO.	DRAFTS	CHECKER	ENG. APP.	REQ.	ITEM	PART NO.	DESCRIPTION	SYMBOL
										.081	THE TECHNICAL MATERIEL CORP. MAMARONECK, NEW YORK	PLATE MOUNTING, SWEEP POTENTIOMETER
										ALUMINUM		
										MATERIAL		
										5052-H32	R. UZZO	
										TYPE & TEMPER	CHECKED	
										HEATTREAT. SPEC.		
										YELLOW IRIDITE		
										FINISH & SPEC. NO.	ELEC. DES. APP	
											MECH. DES. APP	
												MS-2534
												A

A

2 "A" HOLES WERE 9/64
 1 ONE "A" HOLE ADDED

5/24/61 4939 DDM JCS CRJ

TOLERANCES
 DEC. DIM. ±
 FRAC. DIM. ±
 ANGULAR DIM. ±

SCALE:
 MAXIMUM ALLOWABLE TOLERANCES HAVE
 BEEN DETERMINED AND ANY DEVIATIONS
 WILL BE CAUSE FOR REJECTION.
 REMOVE ALL BURRS AND SHARP EDGES