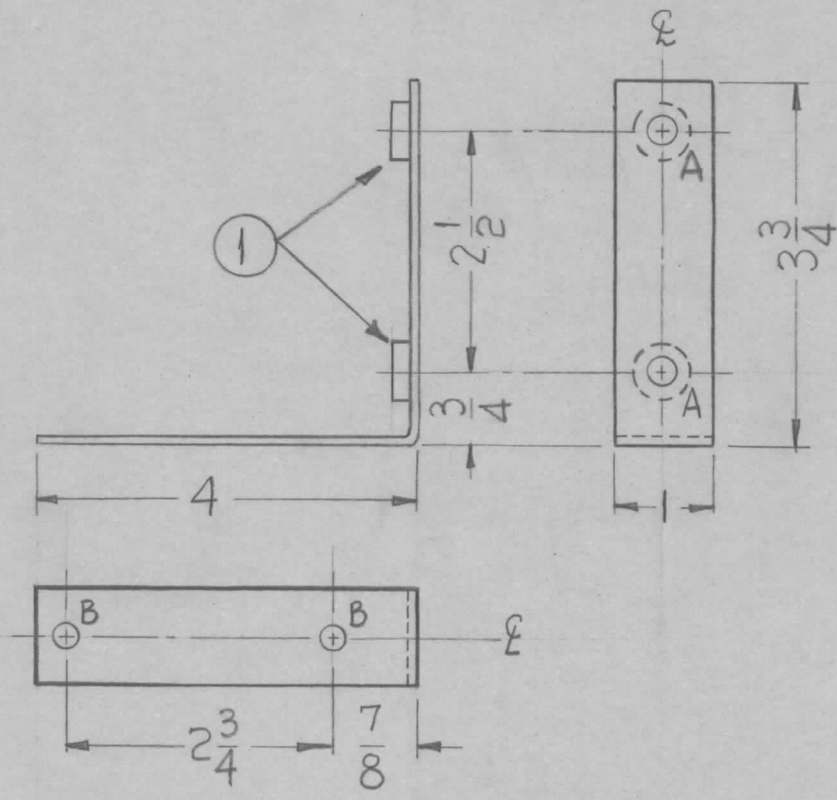


REQ. PER. UNIT	USED ON			MS-2529
	MODEL	ASSY. NO.	DATE	
2	RAK-19B		2-11-61	

HOLE
 A ~ .251-.254 DIA REQ. 2
 B ~ .203 DIA. 2



UNLESS OTHERWISE SPECIFIED
 DIMENSIONS ARE IN INCHES AND INCLUDE
 CHEMICALLY APPLIED OR PLATED FINISHES

DECIMALS	TOLERANCES	FRACTIONS
.X ± .05		± 1/64
.XX ± .01		ANGLES
.XXX ± .005		± 0° 30'

CUT HERE
 GUARANTEED
 2-66

2		1		NT-129-1032-4			NUT, SWAGE, ROUND TYPE		
REQ.	ITEM	PART NO.					DESCRIPTION		SYMBOL
		1/8					THE TECHNICAL MATERIEL CORP.		
		STOCK SIZE					MAMARONECK, NEW YORK		
		ALUMINUM					MTG. BRACKET, COUPLER UNIT		
		MATERIAL							
ISSUE	ITEM	CHANGED FROM	DATE	CH. NO.	DRAFTS	CHECKER	ENG. APP.		
TOLERANCES			SCALE: 1/2 SIZE						
DEC. DIM. ±			MAXIMUM ALLOWABLE TOLERANCES HAVE BEEN DETERMINED AND ANY DEVIATIONS WILL BE CAUSE FOR REJECTION. REMOVE ALL BURRS AND SHARP EDGES						
FRAC. DIM. ±									
ANGULAR DIM. ±									
TYPE & TEMPER		HEATTREAT. SPEC.		DRAWN		CHECKED		FINAL APPROVAL	
S-404				RK				MS-2529	
FINISH & SPEC. NO.		ELEC. DES. APP		MECH. DES. APP					