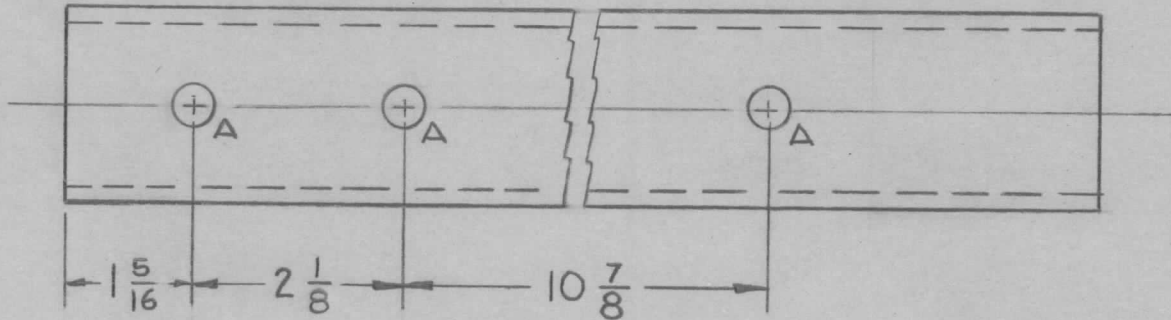
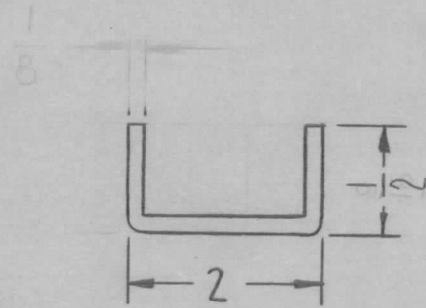
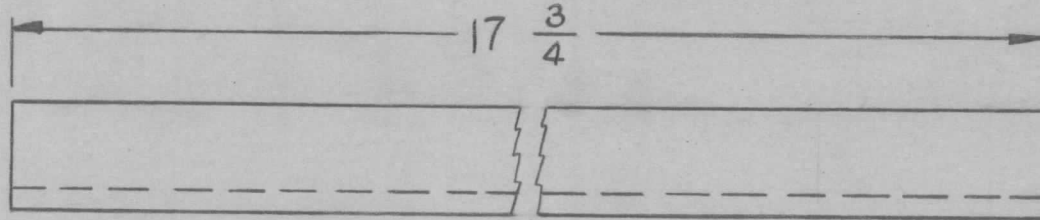


REQ. PER. UNIT	USED ON			MS-2524 B
	MODEL	ASS'Y. NO.	DATE	
2	RAK-9		1-26-61	

A ~ 7/16 3 REQ.



UNLESS OTHERWISE SPECIFIED
DIMENSIONS ARE IN INCHES AND INCLUDE
CHEMICALLY APPLIED OR PLATED FINISHES

DECIMALS	TOLERANCES	FRACTIONS
.X ± .05		± 1/64
.XX ± .01		ANGLES
.XXX ± .005		± 0° 30'

CUT HERE
GUARANTEED
2-66

REQ.	ITEM	PART NO.	DESCRIPTION				SYMBOL		
		11GA. (.1196)	THE TECHNICAL MATERIEL CORP.						
		STOCK SIZE	MAMARONECK, NEW YORK						
B	MAT'L SPECS REV.	8/3/69 19536	SUPPORT TRACK						
A	MAT'L SPECS REV.	5.11.67 18197	POWER SUPPLY						
	1/8 DIM ADD. 1/2 WAS 9/16								
ISSUE	ITEM	CHANGED FROM	DATE	CH. NO.	DRAFTS	CHECKER	ENG. APP.		
TOLERANCES			SCALE:						
DEC. DIM. ±			MAXIMUM ALLOWABLE TOLERANCES HAVE						
FRAC. DIM. ±			BEEN DETERMINED AND ANY DEVIATIONS						
ANGULAR DIM. ±			WILL BE CAUSE FOR REJECTION.						
			REMOVE ALL BURRS AND SHARP EDGES						
TYPE & TEMPER		HEATTREAT. SPEC.		DRAWN		CHECKED		FINAL APPROVAL	
S105 CAD. PLATED				R. UZZO		[Signature]		MS-2524 B	
FINISH & SPEC. NO.				ELEC. DES. APP.		MECH. DES. APP.			