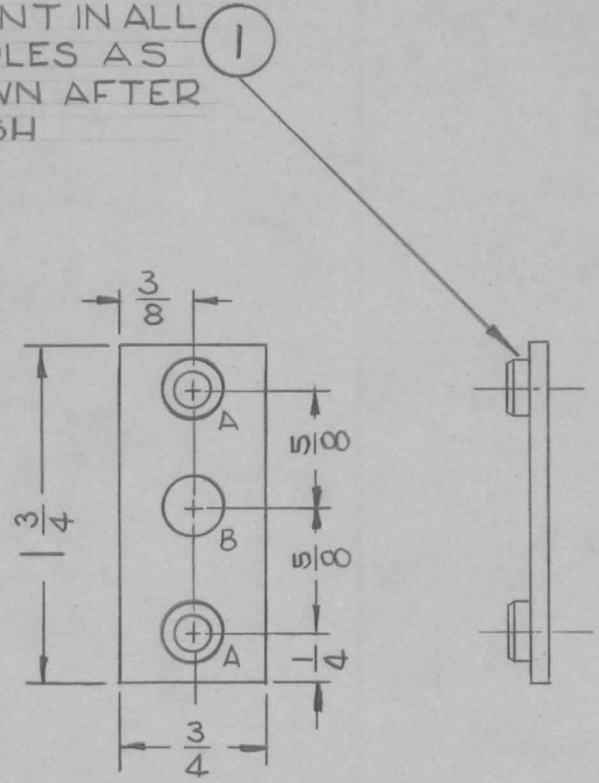


REQ. PER UNIT	USED ON		
	MODEL	ASS'Y. NO.	DATE
2	RFB-1		
2	RFC-1		
2	RFD-1		1-20-61

MS-2523

MOUNT IN ALL "A" HOLES AS SHOWN AFTER FINISH



A - 191-194 DIA. 1 Req
 B - 5/16 DIA. 2 Req

NOTICE TO PERSONS RECEIVING THIS DRAWING

THE TECHNICAL MATERIEL CORPORATION claims proprietary right in the material disclosed hereon. This drawing is issued in confidence for engineering information only and may not be reproduced or used to manufacture anything shown hereon without permission from THE TECHNICAL MATERIEL CORPORATION to the user. This drawing is loaned for mutual assistance and is subject to recall at any time.

Property of:

THE TECHNICAL MATERIEL CORPORATION
 MAMARONECK, NEW YORK

UNLESS OTHERWISE SPECIFIED DIMENSIONS ARE IN INCHES AND INCLUDE CHEMICALLY APPLIED OR PLATED FINISHES	
DECIMALS .X ± .05 .XX ± .01 .XXX ± .005	FRACTIONS ± 1/64 ANGLES ± 0° 30'
TOLERANCES	

CUT HERE GUARANTEED 2-66

REQ.	ITEM	PART NO.	DESCRIPTION	SYMBOL
2	1	NT-129-632-4	NUT ROUND, SWAGE TYPE	
			THE TECHNICAL MATERIEL CORP.	
			MAMARONECK, NEW YORK	
			FLOAT, GEAR SHAFT	
			MATERIAL	
			ALUMINUM	
			STOCK SIZE	
			.064	
			TYPE & TEMPER	
			S404 YELL IRIDITE	
			HEAT TREAT. SPEC.	
			5052-H32	
			DRAWN	
			R. UZZO	
			CHECKED	
			AWB	
			FINAL APPROVAL	
			MS-2523	
			ELEC. DES. APP	
			MECH. DES. APP	

ISSUE	ITEM	CHANGED FROM	DATE	CH. NO.	DRAFTS	CHECKER	ENG. APP.
TOLERANCES			SCALE: FULL DO NOT SCALE				
DEC. DIM. ±			MAXIMUM ALLOWABLE TOLERANCES HAVE BEEN DETERMINED AND ANY DEVIATIONS WILL BE CAUSE FOR REJECTION.				
FRAC. DIM. ±			REMOVE ALL BURRS AND SHARP EDGES				
ANGULAR DIM. ±							