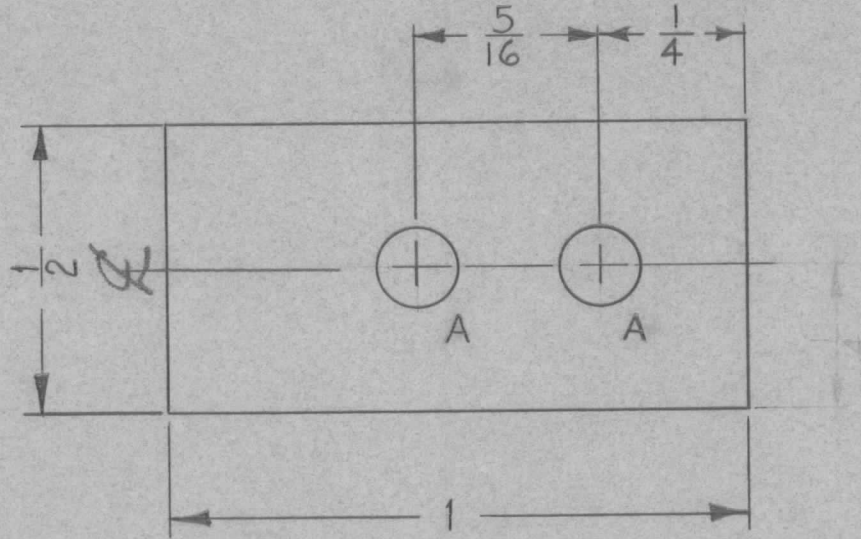


A ~ $\frac{9}{64}$ DIA.

2 REQ.



| | | |
|---|------------|-----------|
| UNLESS OTHERWISE SPECIFIED DIMENSIONS ARE IN INCHES AND INCLUDE CHEMICALLY APPLIED OR PLATED FINISHES | | |
| DECIMALS | TOLERANCES | FRACTIONS |
| .X ± .05 | | ± 1/64 |
| .XX ± .01 | | ANGLES |
| .XXX ± .005 | | ± 0° 30' |

CUT HERE
GUARANTEED
2-66

DWG No WAS SY-1031-28

| | | | | | | |
|-------------------|--|----------------------------|--|-----------------|-----------|--|
| 1/8 | | REMARKS: REQ PER UNIT 2 | THE TECHNICAL MATERIEL CORP. MAMARONECK, NEW YORK SYSTEMS DEPARTMENT | | | |
| STOCK SIZE | | | SALES ORDER NUMBER G-10873 | PROPOSAL NUMBER | QR NUMBER | |
| PHENOLIC | | | TITLE: SUPPORT BLOCK, HYBRID UNIT | | | |
| MATERIAL | | | | | | |
| XXXP | | | | | | |
| TYPE & TEMPER | | HEAT TREAT. SPEC. | | | | |
| NATURAL | | | | | | |
| FINISH & SPEC NO. | | | | | | |
| | | W.A.F. | 12-29-60 | FOS. | MS-2520 | |
| | | DRAWN BY | DATE | FINAL APPROVAL | | |