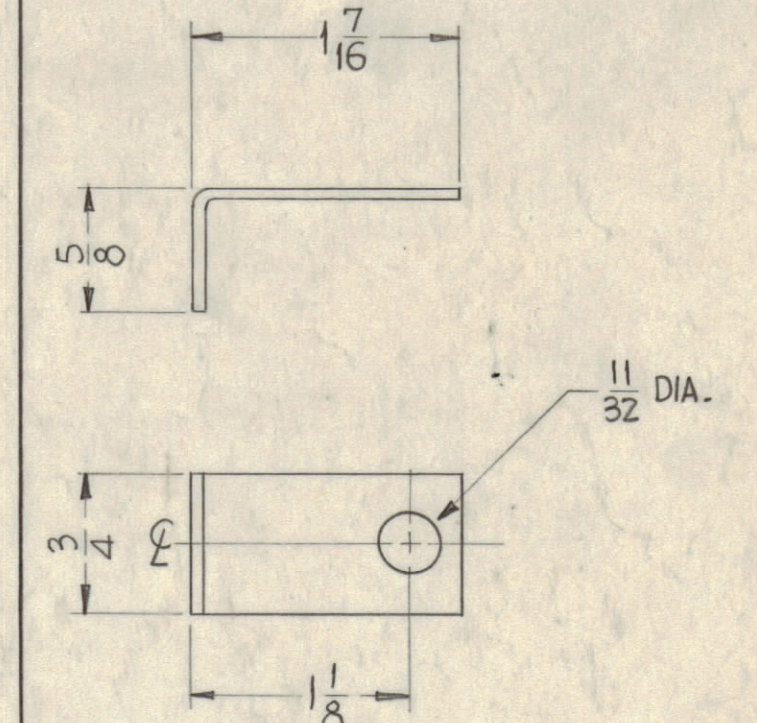
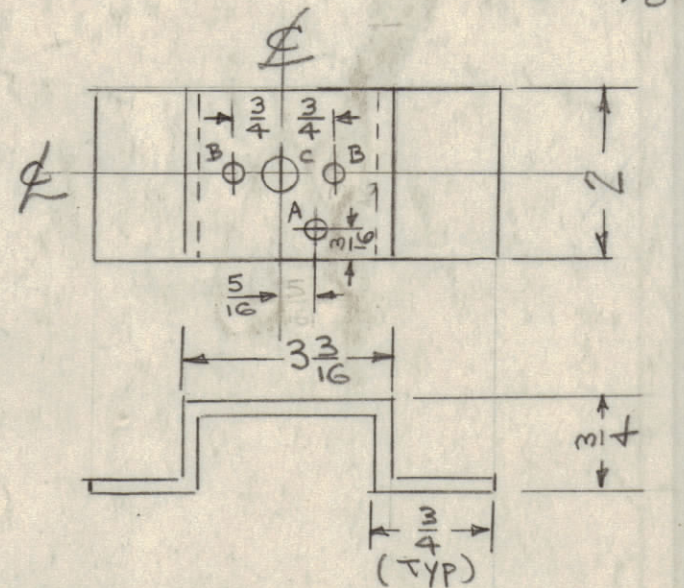


**NOTICE TO PERSONS RECEIVING THIS DRAWING**

THE TECHNICAL MATERIEL CORPORATION claims proprietary right in the material disclosed hereon. This drawing is issued in confidence for engineering information only and may not be reproduced or used to manufacture anything shown hereon without permission from THE TECHNICAL MATERIEL CORPORATION to the user. This drawing is loaned for mutual assistance and is subject to recall at any time.

Property of:  
THE TECHNICAL MATERIEL CORPORATION  
MAMARONECK, NEW YORK

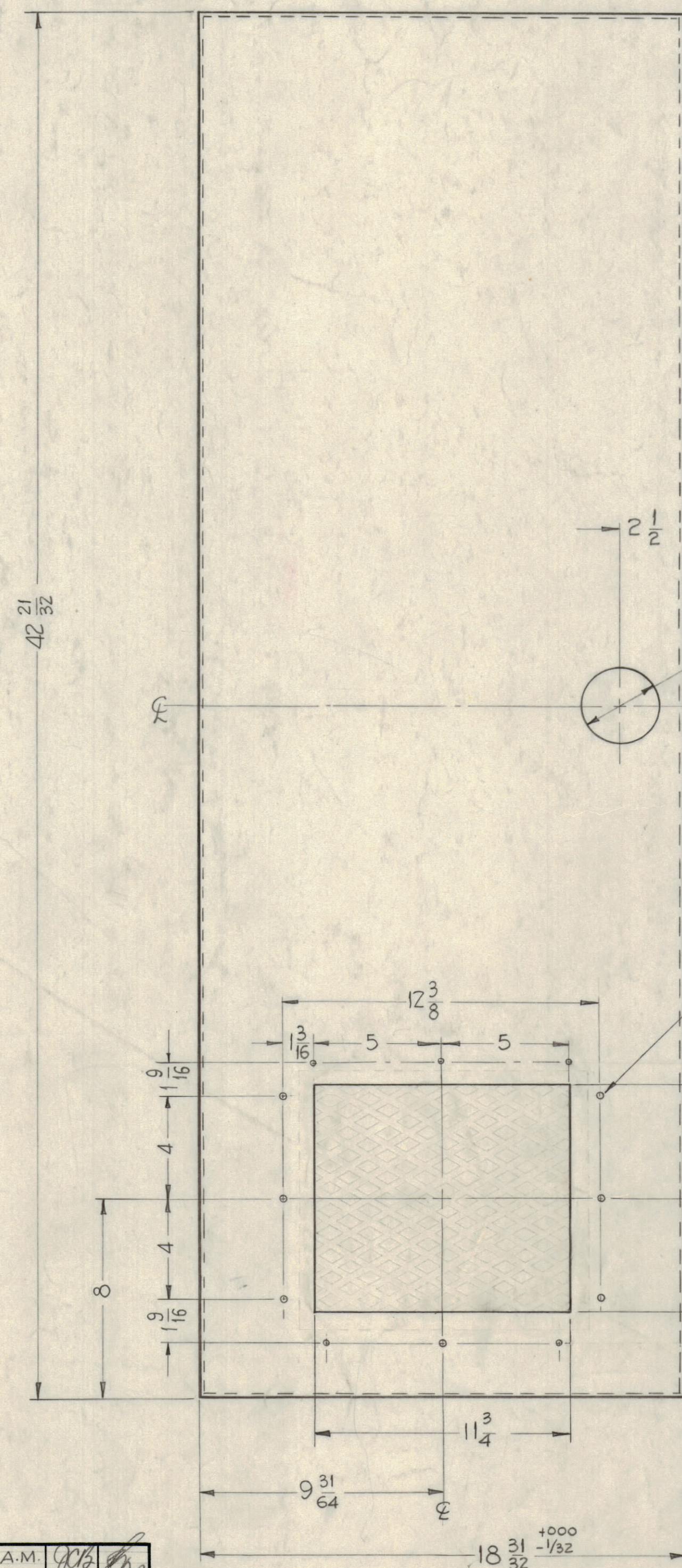
BRACKET, CAM MTG.  
MATERIAL:  $\frac{1}{8}$  CR. STEEL  
1 REQ.  
A - #29 DRILL  
B - DRILL & TAP FOR G-32  
C -  $\frac{3}{8}$  DIA



LATCH ROD BRACKET  
16 GA STEEL  
(2 REQ.)

NOTE - DOOR MUST BE FLAT OR 2°  
OVERBEND TOWARDS INSIDE,  
TOP AND BOTTOM.

MANUFACTURER WILL SUPPLY ASSEMBLY TO DOOR THE FOLLOWING ITEMS:  
1 - HANDLE, HA-114-1  
2 - RODS, PM-531-B-20.75  
1 - CAM, PO-186  
1 - GASKET, EXTRUDED, 1/4" GA-144-122  
MOUNTED ON THE HANDLE



HANDLE  
HA-114-1

LATCH ROD BRACKET  
(SEE DETAIL)

WELD BRACKETS TO DOOR  
AS SHOWN.

SLIP HINGE  
WELDED AS  
SHOWN (3 REQ.)

SEAM WELD  
CAM MTG BKT.  
AS SHOWN

WELD 4 CORNERS  
AS SHOWN

102-11/4  
1/2-16 GA. FLAT  
EXPANDED METAL  
SPOT WELDED TO INSIDE OF  
DOOR AS SHOWN

REQ.	ITEM	PART NO.	DESCRIPTION	SYMBOL
1	4	PO-186	CAM, 2 POINT CATCH	
1	3	GA-144-122	GASKET, EXTRUDED	
2	2	PM-531-B-20.75	ROD, DOOR LATCH	
1	1	HA-114-1	HANDLE	
REQ.		ITEM	DESCRIPTION	SYMBOL
1		14 GA	STEEL	
STOCK SIZE			THE TECHNICAL MATERIEL CORP.	
MATERIAL			MAMARONECK, NEW YORK	
			DOOR, REAR	
DRAWN		PK	CHECKED	FINAL APPROVAL
TYPE & TEMPER		HEAT TREAT. SPEC.		
1114 ZINC CHROMATE PRIMER		3590 PAINT BLUE-GRAY TEXTURE		
FINISH & SPEC. NO.		ELEC. DES. APP.		MECH. DES. APP.
		SHEET		OF

REQ. PER UNIT	MODEL	SECTION	ASS'Y. NO.	DATE	USED ON
1	RAK-11	FOR USE WITH MS-2511		2-2-61	

SYMBOL	ZONE	DESCRIPTION	DATE	CH. NO.	DRAFTS	CHECKER	ENG. APP.
C	1	S114 # S520 WAS S254 (FINISH)	4-28-64	11290	A.M.		
B	DR. AP	HANDLE MTO HOLE WAS 2" DIA	5-8-63	8948			
A	CS	DELETED EXPANDED METAL ON DOORS	3/16/61	4418			
		ADDED (3) .203 DIA HLS ON TOP OF CUTOUT.					
		CUTOUT DIMS WERE 18x9					

UNLESS OTHERWISE SPECIFIED:  
DIMENSIONS ARE IN INCHES  
TOLERANCES ON  
FRACTIONS ± 1/64  
DECIMALS ± .005  
ANGLES ± 1/2°

SCALE  
MAXIMUM ALLOWABLE TOLERANCES HAVE BEEN DETERMINED AND ANY DEVIATIONS WILL BE CAUSE FOR REJECTION. REMOVE ALL BURRS & SHARP EDGES

MS-2516 C