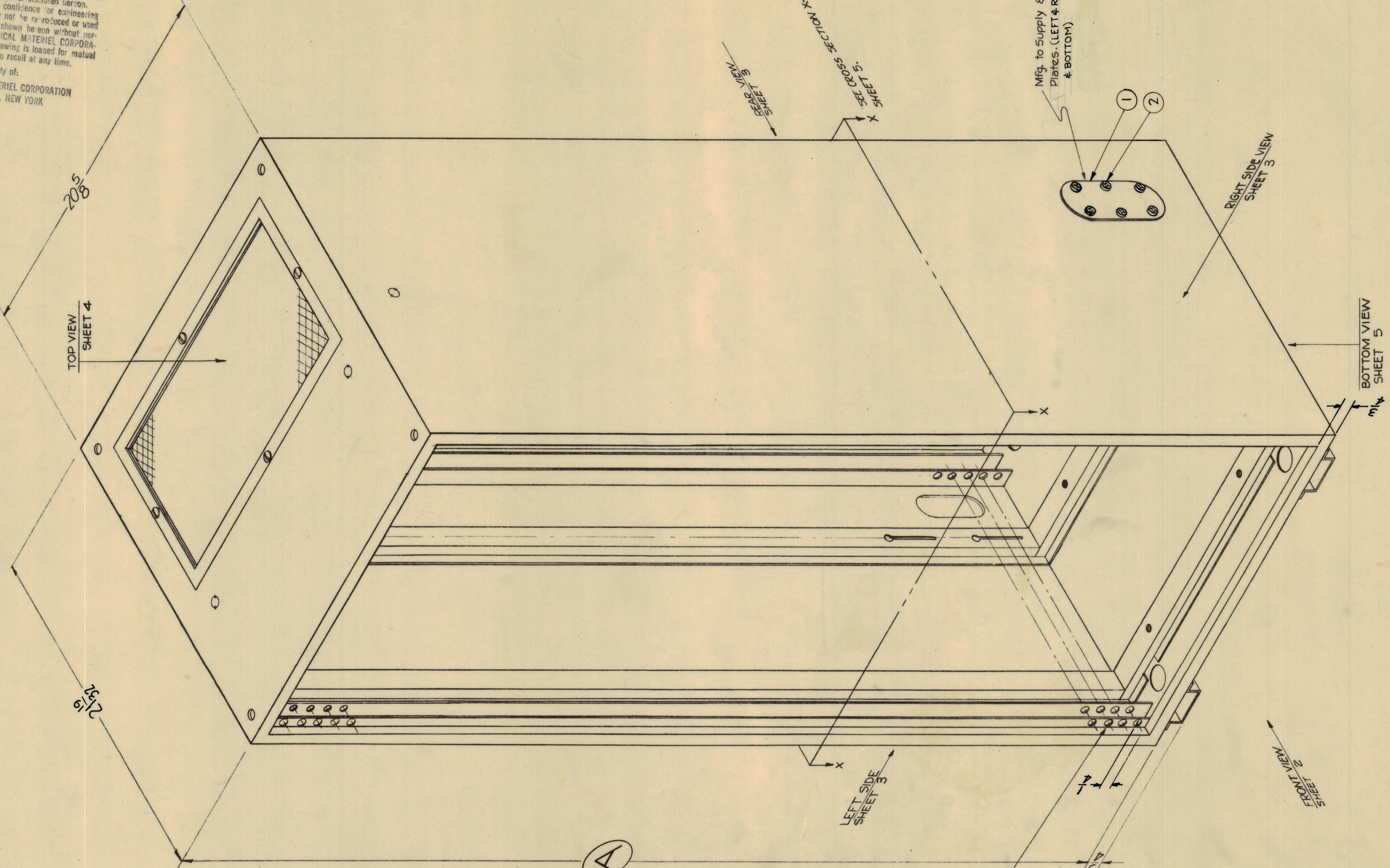


NOTICE TO PERSONS RECEIVING THIS DRAWING
 THE TECHNICAL MATERIEL CORPORATION claims proprietary right in the material disclosed herein. This drawing is issued in confidence or engineering information only and may not be re-produced or used to manufacture anything shown herein without permission from THE TECHNICAL MATERIEL CORPORATION to the user. This drawing is loaned for mutual assistance and is subject to recall at any time.

Property of:
 THE TECHNICAL MATERIEL CORPORATION
 MAMARONECK, NEW YORK



TOLERANCE SPECIFICATIONS
 (ALL SHEETS)
 OVERALL STRUCTURAL TOL. - ± 1/16.
 HOLE LOCATIONS - ± 1/64 C-C.
 OTHER TOLERANCES AS SPECIFIED.
 NOTE:
 DO NOT ACCUMULATE TOL. ON CHAIN DIMENSIONS.

FABRICATION NOTES
 MATERIAL: ALL MATERIAL IS 13 GAUGE STEEL UNLESS OTHERWISE SPECIFIED.

FINISH NOTES
 S114-ZINC CHROMATE PRIMER
 S220-TMC RCAF BLUE GREY SMOOTH ENAMEL.

TMC PART NO.	(A) (SHEET 2) OVERALL HEIGHT	(B) (SHEET 2) PANEL SPACING	(C) (SHEET 2) UNIVERSAL SPACING	(D) (SHEET 3) KEY SLOTS QUANT. REQ.	USED ON (see Mod.Chart)
MS-2512	64-1/2	63	62 1/2	12	RAK-10

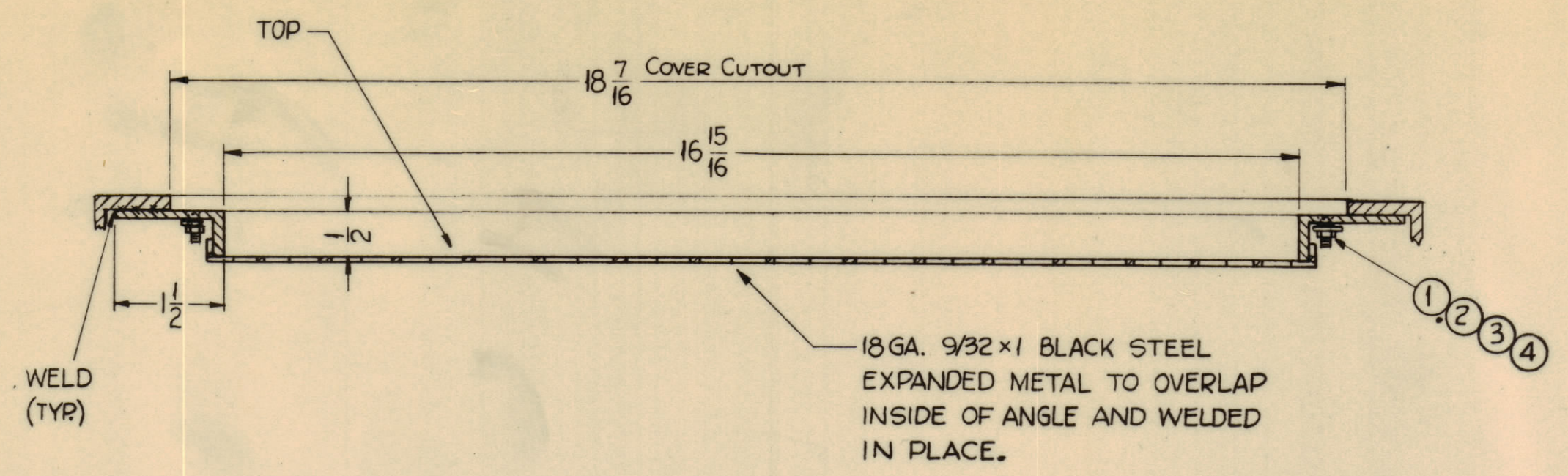
NOTE ~
 ALL MEMBER HOLES FRONT & REAR MUST BE ON A HORIZONTAL PLANE TO EACH OTHER WITHIN 1/8" TOL.

REV.	DATE	DESCRIPTION	DATE	CH. NO.	DRAFTS	CHECKER	ENG. APP.
1	8-21-61	SEE SHEET 3	8-21-61	5433
2	8-21-61	SEE SHEET 3	8-21-61	5433
3	8-21-61	SEE SHEET 3	8-21-61	5433
4	8-21-61	SEE SHEET 3	8-21-61	5433
5	8-21-61	SEE SHEET 3	8-21-61	5433

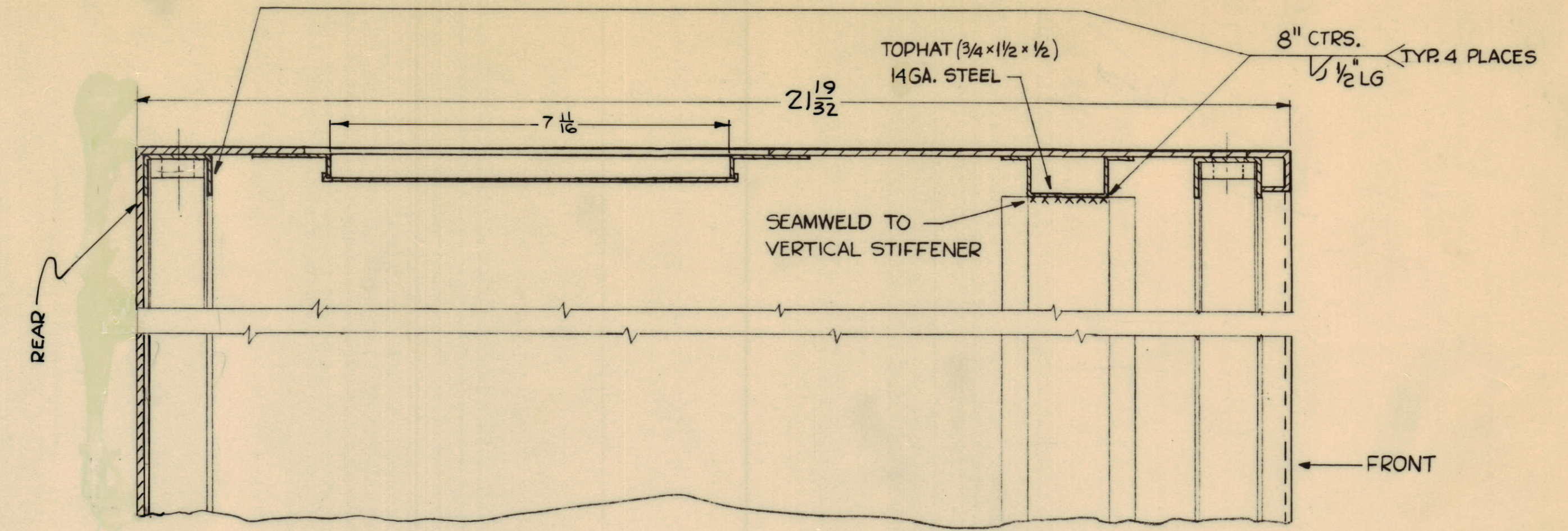
UNLESS OTHERWISE SPECIFIED:
 DIMENSIONS ARE IN INCHES
 TOLERANCES ON FRACTIONS ± 1/64 DECIMALS ± .005 ANGLES ± 1/2°
 MAXIMUM ALLOWABLE TOLERANCES HAVE BEEN DETERMINED AND ANY DEVIATIONS WILL BE CAUSE FOR REJECTION. REMOVE ALL BURRS & SHARP EDGES

REQ. PER UNIT	MODEL	SECTION	MOD. DWG. NO.	DATE
	RAK-10			7-11-61

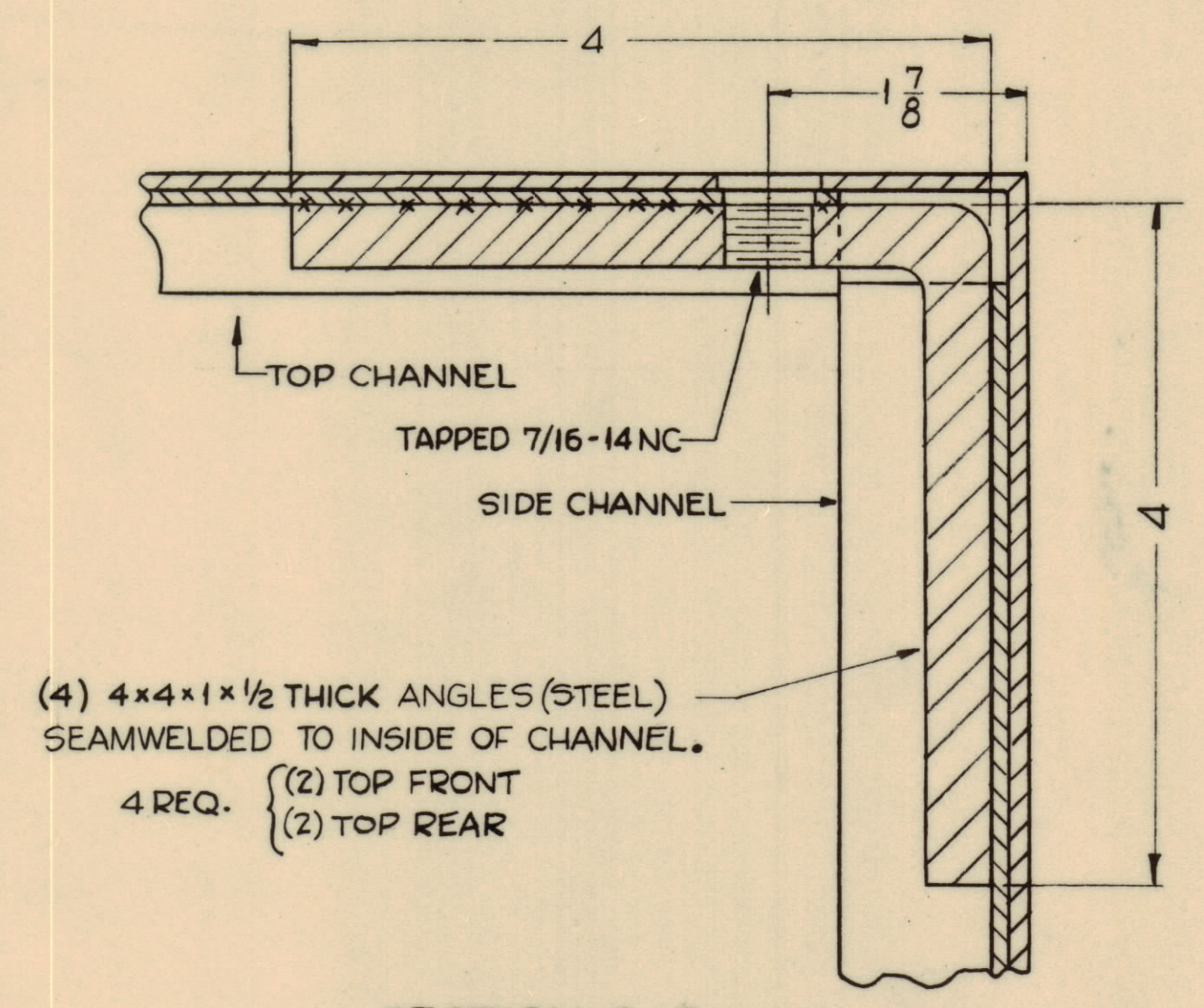
REQ. ITEM	PART NO.	DESCRIPTION	SYMBOL
2	SCBP2520BNIO	SCREW, MACHINE	
3	MS-1850-S	PLATE, ACCESS	
THE TECHNICAL MATERIEL CORP. MAMARONECK, NEW YORK			
RACK, BASIC			
DRAWN		CHECKED	FINAL APPROVAL
RK		[Signature]	[Signature]
FINISH & SPEC. NO.		ELEC. DES. APP.	MECH. DES. APP.
MS-2512			
SHEET 1 OF 5		DEFIANCE NO. 1020 5057	



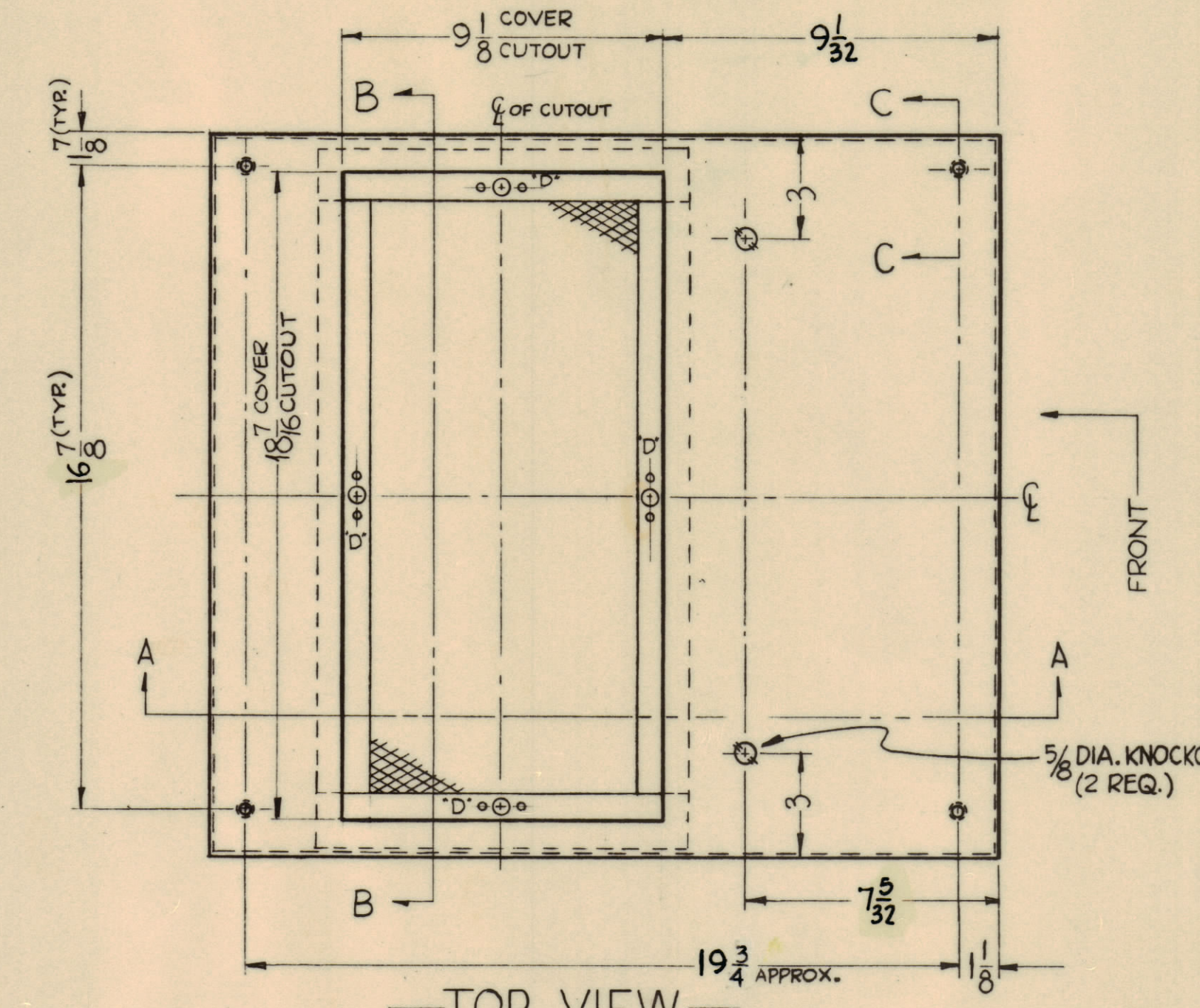
SECTION B-B



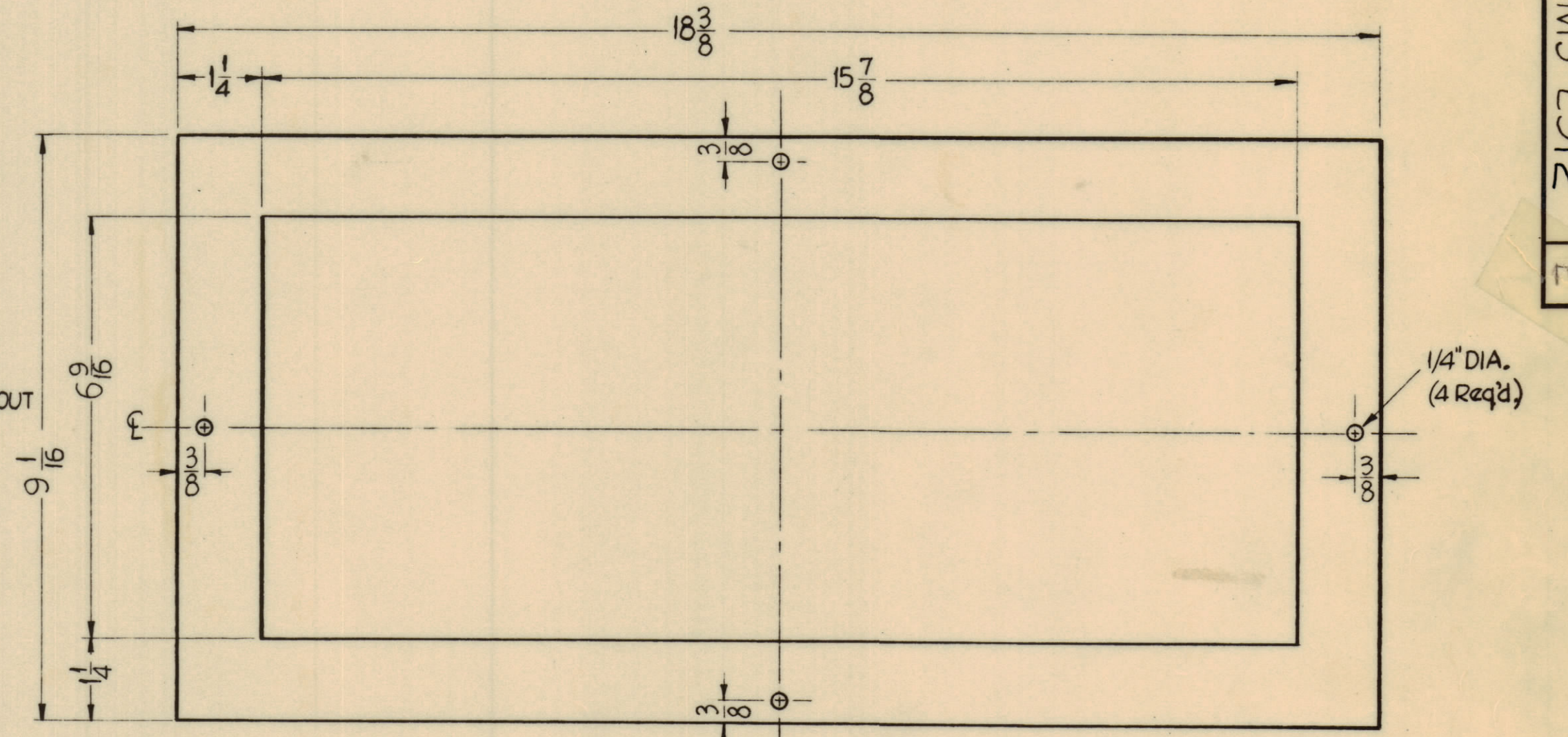
SECTION A-A



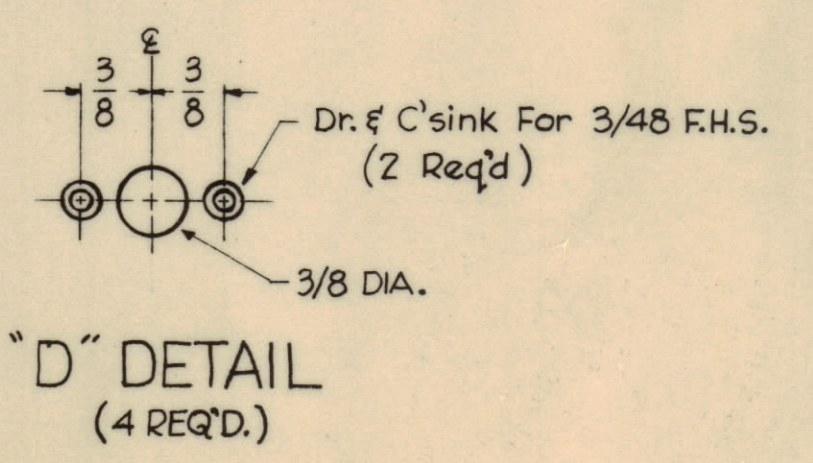
SECTION C-C (TYR)
(Ref. Pictorial on Sheet 2.)



TOP VIEW
(Shown with Cover Removed.)



COVER DETAIL
NOTE - COVER TO BE SUPPLIED BY MANUFACTURER.
REF - TMC #MS-1900 FOR STOCKING AND SPARE PARTS PURPOSES ONLY.



"D" DETAIL
(4 REQ'D.)

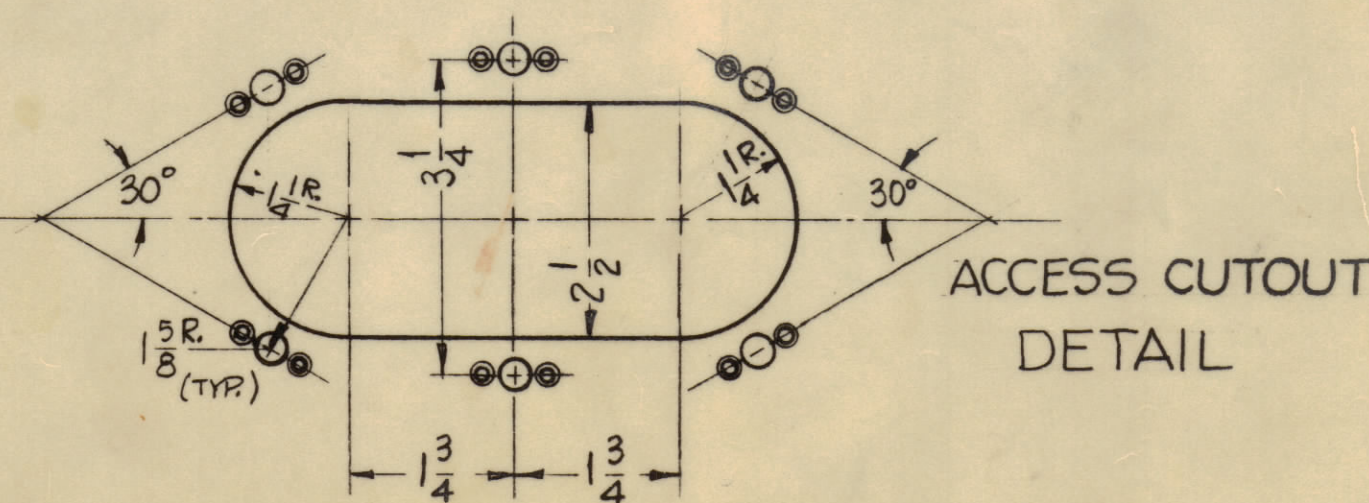
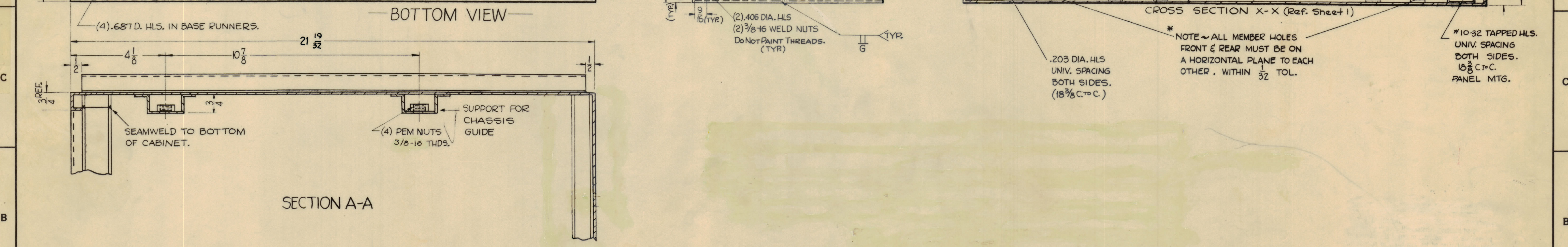
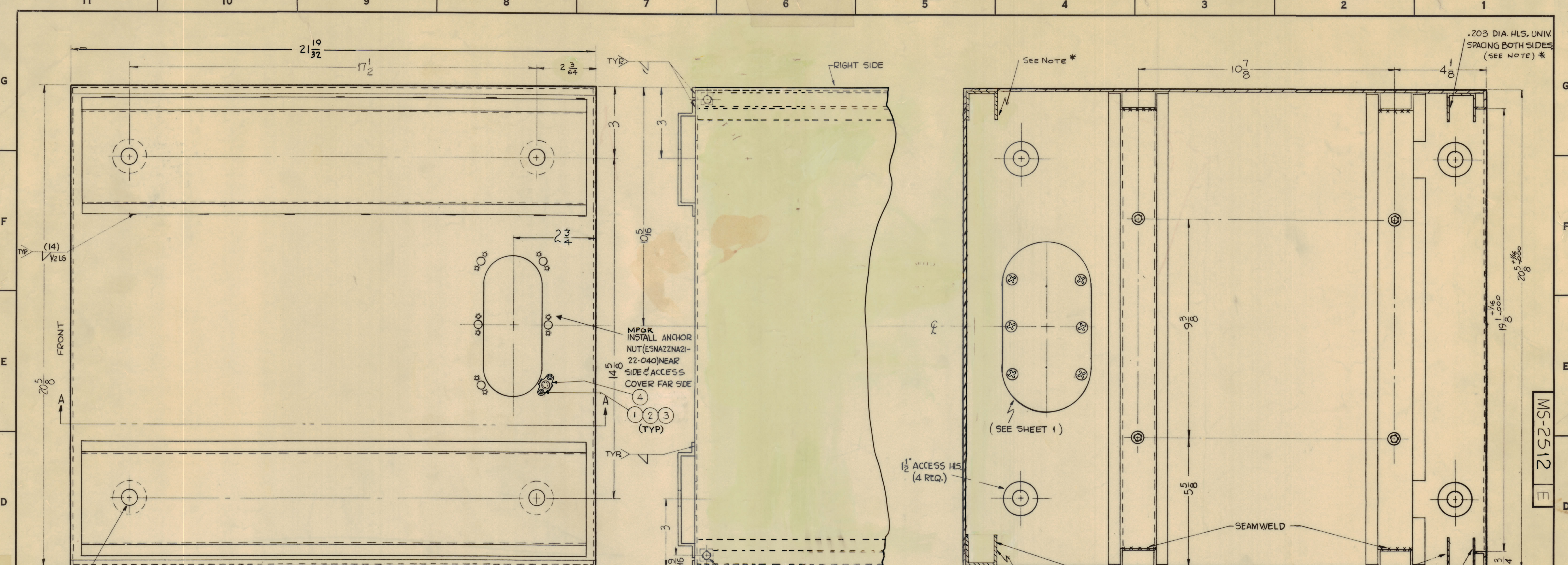
SYM	ZONE	DESCRIPTION	DATE	CH. NO.	DRAFTS	CHECKER	ENG. APP.
E		SEE SHEET 3					
D	G4	7 1/8 DIM ADDED, HDWR. CLARIFIED	4-29-63	2870	SE	SK	SK
C		SEE SHEET 3	9-21-61	5613	SK	SK	SK
B		SEE SHEET 5	8-17-61	5434	S.E.	SK	SK
A		SEE SHEETS 1-2-3-4-5 TOPHAT WAS 11 GA. STEEL SECTION A-A CLARIFIED DIMENSIONS: 18 3/4 WAS 18 7/8 - 18 7/8 WAS 17 7/8	8-4-61	5359	G.D.	SK	RK

NOTICE TO PERSONS RECEIVING THIS DRAWING
THE TECHNICAL MATERIEL CORPORATION claims proprietary right in the material disclosed herein. This drawing is issued in confidence for engineering information only and may not be reproduced or used to manufacture anything shown hereon without permission from THE TECHNICAL MATERIEL CORPORATION to the user. This drawing is loaned for mutual assistance and is subject to recall at any time.
Property of:
THE TECHNICAL MATERIEL CORPORATION
MAMARONECK, NEW YORK

REQ. ITEM	PART NO.	DESCRIPTION	SYMBOL
4	6	FS-110-1	Stud, Slotted Head
4	5	FS-109-3	Ring, Stud Retaining
4	4	NTH0348BN6	Nut, Hex
4	3	LW503MRN	Lockwasher, Split
4	2	SCFP0348BN6	Screw, Machine
4	1	FS-102-1	Clip, Spring "S"

MATERIAL		DRAWN		CHECKED		PIN L APPROVAL	
RAK-10		RK		[Signature]		MS-2512	
MODEL		SECTION		ASSY. NO.		DATE	
						7-11-61	
FINISH & SPEC. NO.		ELEC. DES. APP.		MECH. DES. APP.		SHEET 4 OF 5	

MS-2512



REV	DESCRIPTION	DATE	CH. NO.	DRAFTS	CHECKER	ENG. APP.
1	SEE SHEET 3	6-6-63	0105			
2	ACCESS COVERING HWWR CLARIFIED (ITEMS DIM 4)	4-30-63	0870			
3	SEE SHEET 3	9-21-61	5613			
4	DIM 2 1/2 WAS 3 1/2 (Bottom VIEW)	9-17-61	5434			
5	SEE SHEETS 1, 3, 3, 4					
6	STIFFENERS DELETED					
7	ON BOTTOM VIEW DIM 2 1/2 WAS 2 1/2					
8	ON SECTION A-A 2 X 2 DIMENSIONAL RIBS WITH REAR					
9	DIM. PEM NUTS WAS 5/16-18					

UNLESS OTHERWISE SPECIFIED:
DIMENSIONS ARE IN INCHES
DECIMALS
TOLERANCE
XXX ± .005

18	4	NT-117-2520-A	NUT, ANCHOR	
3G	3	NTH0440BNG	NUT, HEX	
3G	2	LWS04MRN	LOCKWASHER, SPLIT	
3G	1	SCFP0440BN8	SCREW, MACHINE	
REQ. ITEM		PART NO.	DESCRIPTION	SYMBOL
STOCK SIZE				
MATERIAL				
TYPE & TEMPER				
HEAT TREAT. SPEC.				
FINISH & SPEC. NO.				
ELEC. DES. APP.				
MECH. DES. APP.				

REQ. PER UNIT	MODEL	SECTION	ASS'Y. NO.	DATE
	RAK-10			7-11-61
USED ON				

THE TECHNICAL MATERIEL CORP.
MAMARONECK, NEW YORK
RACK, BASIC

20/11/61
RK
MS-2512
SHEET 5 OF 5