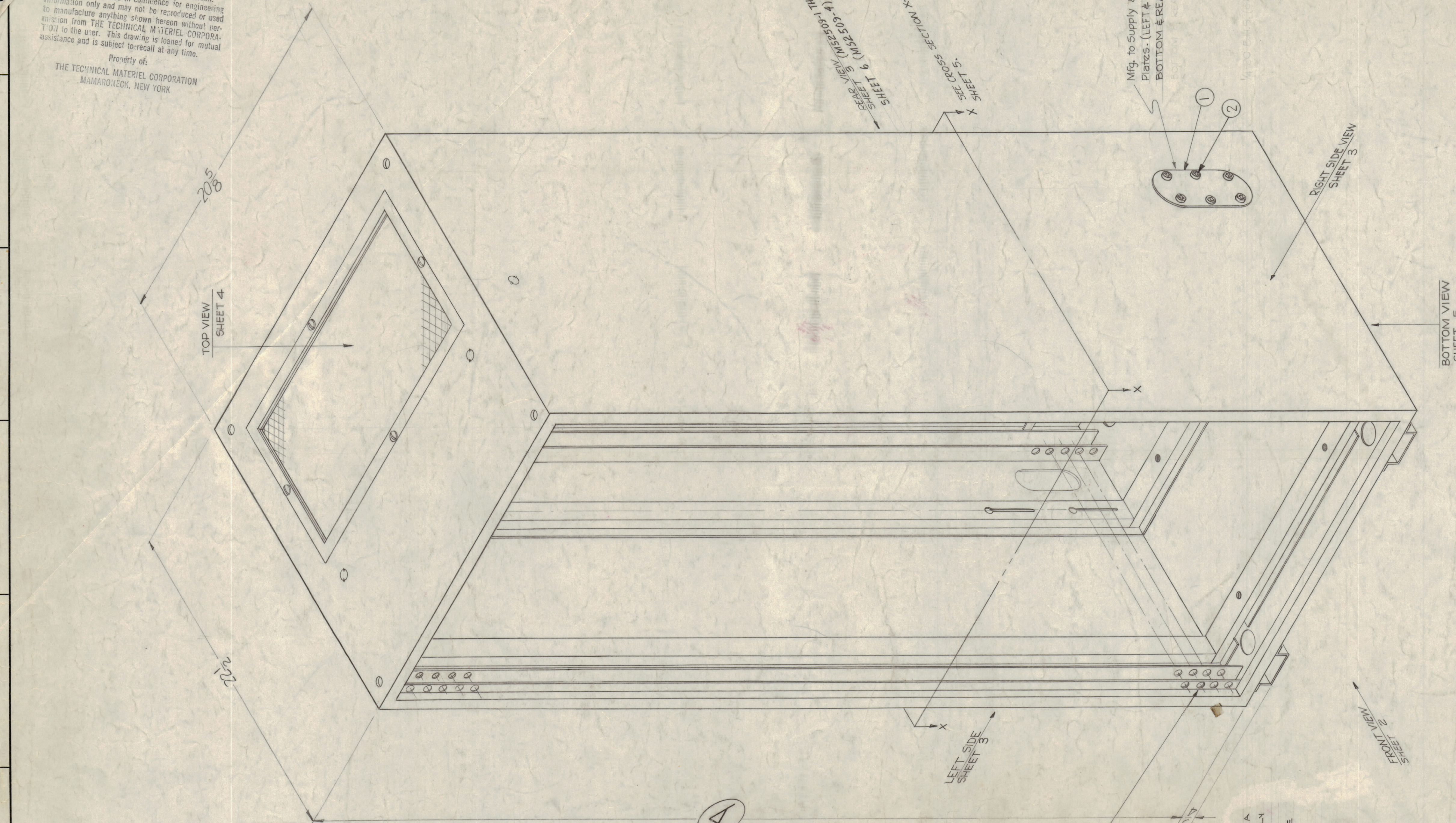


NOTICE TO PERSONS RECEIVING THIS DRAWING  
 THE TECHNICAL MATERIEL CORPORATION claims  
 proprietary right in the material disclosed herein.  
 This drawing is issued in confidence for engineering  
 information only and may not be reproduced or used  
 to manufacture anything shown herein without per-  
 mission from THE TECHNICAL MATERIEL CORPORA-  
 TION to the user. This drawing is loaned for mutual  
 assistance and is subject to recall at any time.  
 Property of:  
 THE TECHNICAL MATERIEL CORPORATION  
 MAMARONECK, NEW YORK



**TOLERANCE SPECIFICATIONS**  
 (ALL SHEETS)  
 OVERALL STRUCTURAL TOL. - ± 1/16.  
 HOLE LOCATIONS - ± 1/64 C-C.  
 OTHER TOLERANCES AS SPECIFIED.  
 NOTE:  
 DO NOT ACCUMULATE TOL. ON  
 CHAIN DIMENSIONS.

**FABRICATION NOTES**  
 MATERIAL: ALL MATERIAL  
 IS 15 GAUGE STEEL  
 UNLESS OTHERWISE  
 SPECIFIED.

**FINISH NOTES**  
 S520 - BLUE-GRAY TEXTURED  
 VINYL PAINT.  
 S523 - BLUE-GRAY SMOOTH PAINT  
 (FOR INTERIOR SURFACES)

TMC PART NO.	(A) SHEET 2) OVERALL HEIGHT	(B) SHEET 2) PANEL SPACING	(C) SHEET 2) UNIVERSAL SPACING	(D) SHEET 3) KEY SLOTS QUANT. REQ.	(E) SHEET 3) HEIGHT OF DOOR OPENING	(F) SHEET 3) HINGE SPACING	(G) SHEET 3) 2" MTG. HOLE S	(SHEET 6) TOP REAR PANEL OPENING
MS-2509-1	59 3/32	57 1/2	57 1/4	11	42 25/32 + 1/32	18 1/2	2	NOT REQ.
MS-2509-2	71 1/2	70 1/2	69 1/2	13	55 1/32	25	2	NOT REQ.
MS-2509-3	59 3/32	57 1/2	57 1/4	11	42 25/32 + 1/32	18 1/2	2	NOT REQ.
MS-2509-4	45 3/32	43 3/32	43 1/4	8	28 3/32 + 1/32	11 1/2	2	18 7/16 x 9 1/8 W/SCREEN
MS-2509-5	82 1/32	80 1/2	80	NOT REQ.	66 1/32 + 1/32	25	2	NOT REQ.

BYM	ZONE	DESCRIPTION	DATE	CH. NO.	DRAFTS	CHECKER	ENG. APP.
M		SEE SHEET 5	4-4-67	18078	L.A.K.		
L		SEE SHEETS 4 & 6 REVISED P/N 4 F, G, H, I, J, K, L, M, N, O, P, Q, R, S, T, U, V, W, X, Y, Z REAR VIEW NOTE-ADD P/N & SUFFIX USE NOTE	12-5-66	17379	RME		
K		(-5) ADD TO P/N CHART.	3-12-65	13663	RL		
J	G7	REAR VIEW CALLOUT (MS-2509-1 THRU 5) SHEET 4 (MS-2509-1) ADD CHART (SHEET 6) COL. ADD. SEE SHEETS 3, 6 & KEY 1	16-65	13203	RL		
H		ON MOD. P/N "RAK-106" ADD. ON CHART, MS-2509-1 ADD. ON P/N "S14-ZINC CHROMATE PRIMER" DEL. S23 ADD.	10-12-64	12609	RL		
G		S520 FINISH WAS S220	6-17-64	11556	A.M.		
F		SEE SHEETS 2 & 4	6-6-63	9172			
E		ITEMS (1) & (2) CLARIFIED, RAK-1684C ADDED ON CHART	4-29-63	8870			
D		SEE SHEET 3	8-23-62	7112	SG		
C		RAK-12, MS-2098, MS-2509-2 ADDED	7-25-62	6936	SR		
B		SEE SHEET 3	10-11-61	5685	IL		
A		MS-2509-3 ADDED; RAK-24/MS-2681 ADDED (MOD. DWG. CHART) "O" HOLE COLUMN ADDED ON CHART TO MS-2509-2 RAK-12 ADDED	8-4-61	5343	BD		

TMC RAK TYPE	USE MODIFICATION DWG.	BASIC RACK TYPE
RAK-9	MS-1896	MS-2509-2
RAK-11	MS-2511	MS-2509-1
RAK-17	MS-2055	MS-2509-1
RAK-19	MS-2528	MS-2509-1
RAK-24	MS-2681	MS-2509-3
RAK-25	MS-2688	MS-2509-3
RAK-16A	MS-2712	MS-2509-1
RAK-12	MS-2998	MS-2509-2
RAK-20	MS-2799	MS-2509-2
RAK-1684C	MS-3121	MS-2509-1
RAK-106	MS-4024	MS-2509-4

NOTE ~  
 ALL MEMBER HOLES FRONT  
 & REAR MUST BE ON A  
 HORIZONTAL PLANE TO  
 EACH OTHER WITHIN 1/8\"/>

MS-2509-4 R  
 BASIC RACK  
 CUTOUT LOCATION  
 WHEN THE PART NO. IS USED WITHOUT A  
 SUFFIX LETTER, A TOP CUTOUT ONLY  
 WILL BE PROVIDED.  
 WHEN A SUFFIX LETTER IS USED, THE  
 CUTOUTS WILL BE PROVIDED AS  
 FOLLOWS:  
 R - REAR CUTOUT ONLY  
 RT - REAR & TOP CUTOUT.

REQ.	ITEM	PART NO.	DESCRIPTION	SYMBOL
24	2	SCBP2520BN10	SCREW, MACHINE	
4	1	MS-1850-18	PLATE, ACCESS	

STOCK #12

MATERIAL

TYPE & TEMPER

HEAT TREAT. SPEC.

FINISH & SPEC. NO.

ELEC. DES. APP.

MECH. DES. APP.

SHEET 1 OF 6

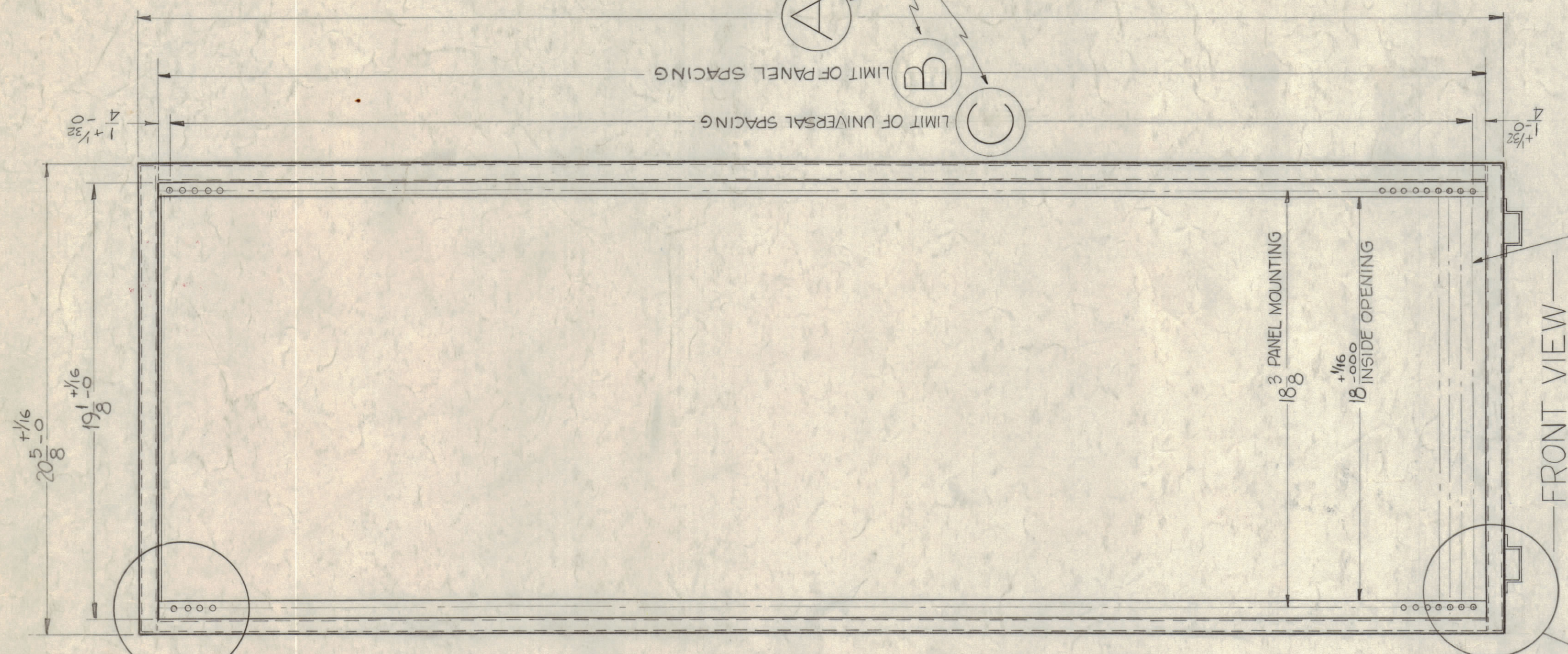
1-26-61

THE TECHNICAL MATERIEL CORP.  
 MAMARONECK, NEW YORK  
 RACK, BASIC

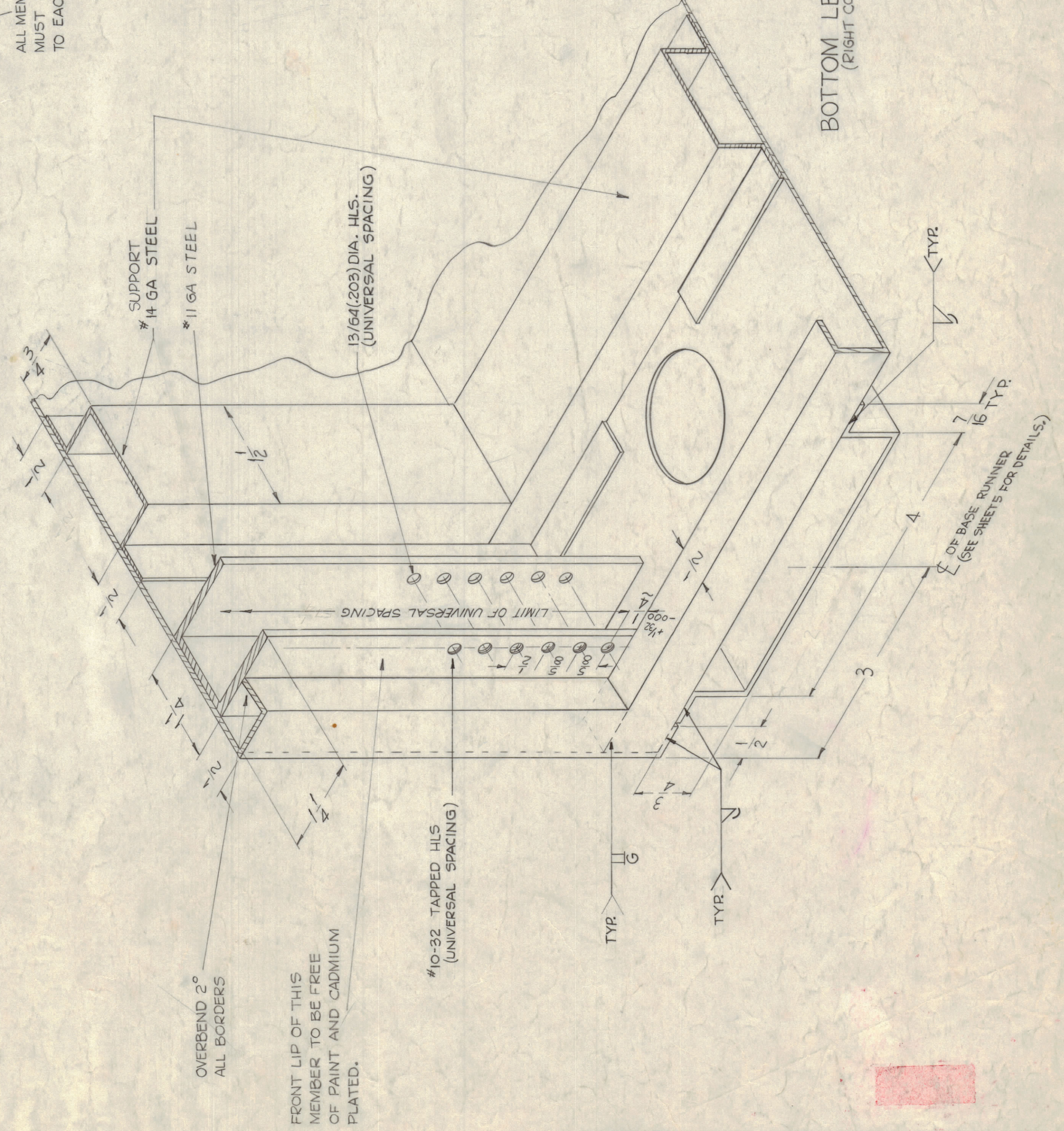
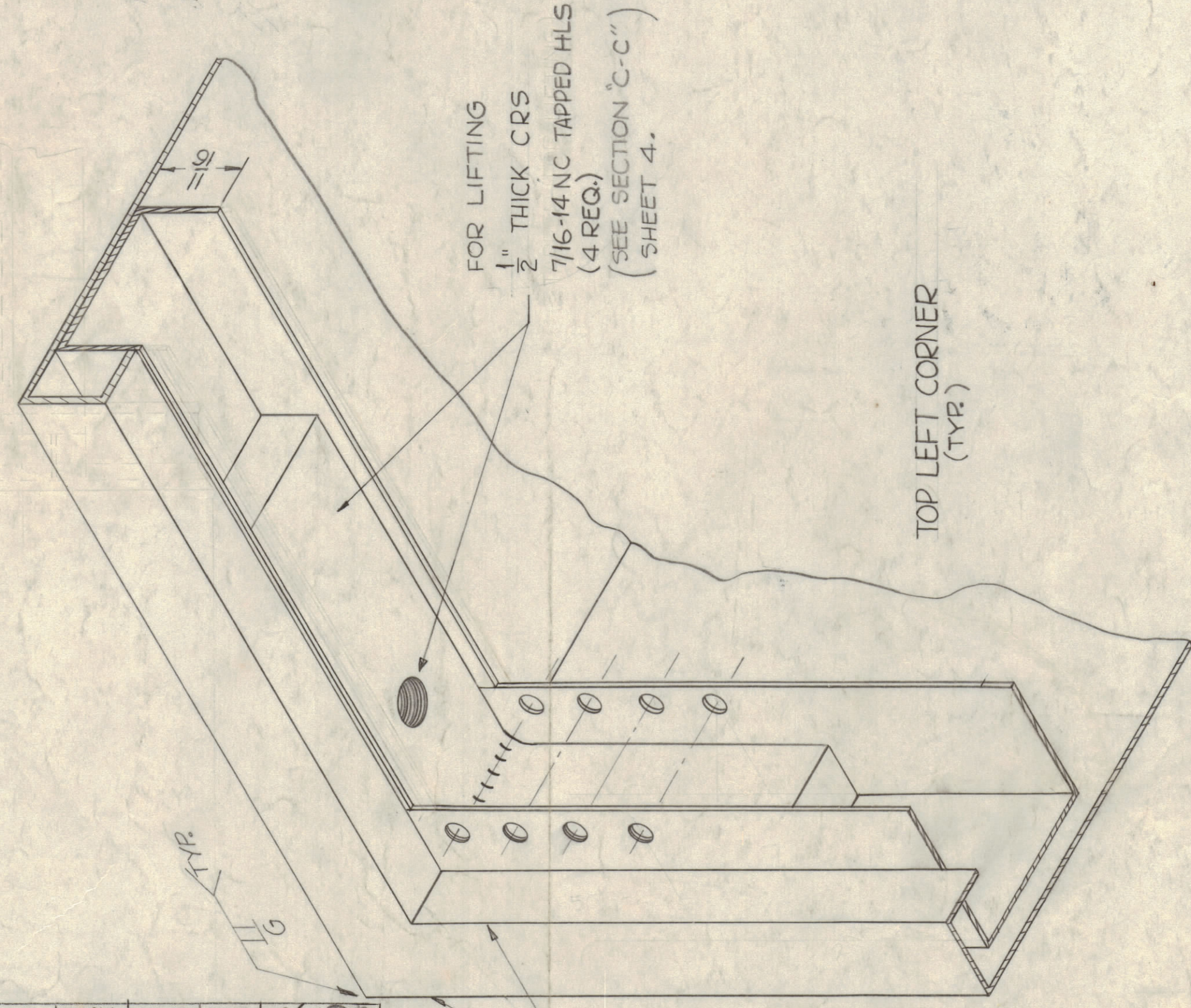
MS 2509 M

MS 2509 M





ALL MEMBER HOLES LEFT & RIGHT MUST BE ON A HORIZONTAL PLANE TO EACH OTHER WITHIN 1/64 TOL.



L	SEE SHEETS 1, 3, 4, 6	12.506	17379	RME		
K	SEE SHEET 1 OF 6 REV. "K"	212.65	17663	RF		
J	SEE SHEETS 1, 3, 6 REV. "J"	1.6.65	15203	RF		
H	SEE SHEET 1 OF 5	10.12.64	12609	RF		
G	SEE SHEET 1 OF 5	6.17.64	11556	A.M.		
F	1/2 CHANNEL PICTORIAL CORRECTED	6.5.63	9172	RF		
E	SEE SHEETS 1, 3, 5	8.29.63	5870	RF		
D	SEE SHEET 4 OF 5	8.29.63	7112	RF		
C	SEE SHEETS 1 OF 5	7.25.62	6936	S.R.G.		
B	SEE SHEETS 1, 3	10.11.61	5685	RF		
A	SEE SHEET 1	8.4.61	5363	G.D.L.		

NOTICE TO PERSONS RECEIVING THIS DRAWING  
 THE TECHNICAL MATERIEL CORPORATION claims proprietary right in the material disclosed hereon. This drawing is issued in confidence for engineering information only and may not be reproduced or used to manufacture anything shown herein without permission from THE TECHNICAL MATERIEL CORPORATION to the user. This drawing is loaned for mutual assistance and is subject to recall at any time.

Property of:  
 THE TECHNICAL MATERIEL CORPORATION  
 MAMARONECK, NEW YORK

UNLESS OTHERWISE SPECIFIED:		SCALE	
DIMENSIONS ARE IN INCHES		MAXIMUM ALLOWABLE TOLERANCES HAVE BEEN DETERMINED AND ANY DEVIATIONS WILL BE CAUSE FOR REJECTION. REMOVE ALL BURRS & SHARP EDGES	
TOLERANCES ON FRACTIONS ± 1/64 DECIMALS ± .005 ANGLES ± 1/2°			

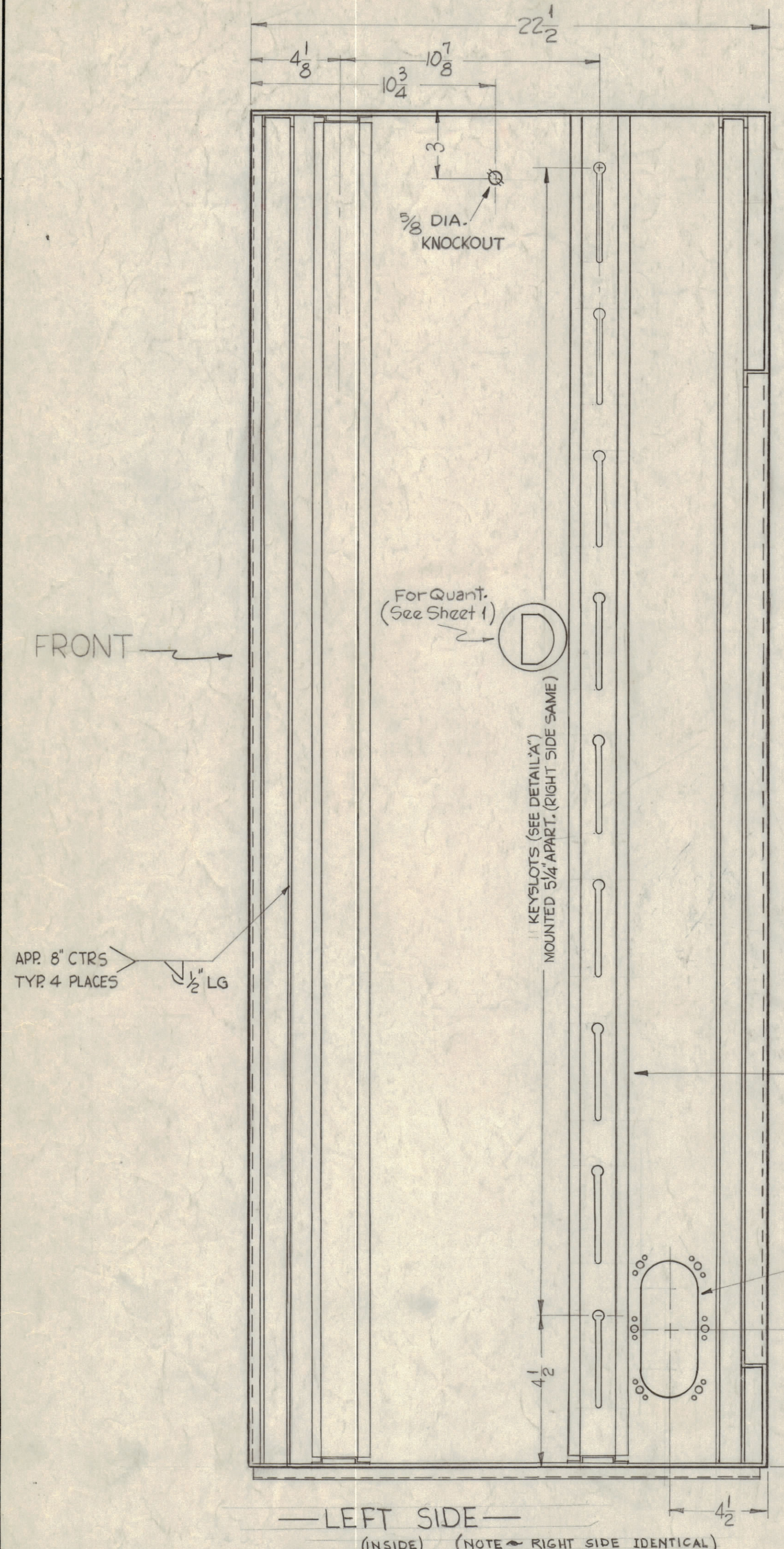
M	SEE SHEET 5 OF 6	4-4-67	18078	L.A.K.		
SYM	ZONE	DESCRIPTION	DATE	CH. NO.	DRAFTS	CHECKER

REQ. PER UNIT	MODEL	SECTION	ASSY. NO.	DATE
				11/26/61

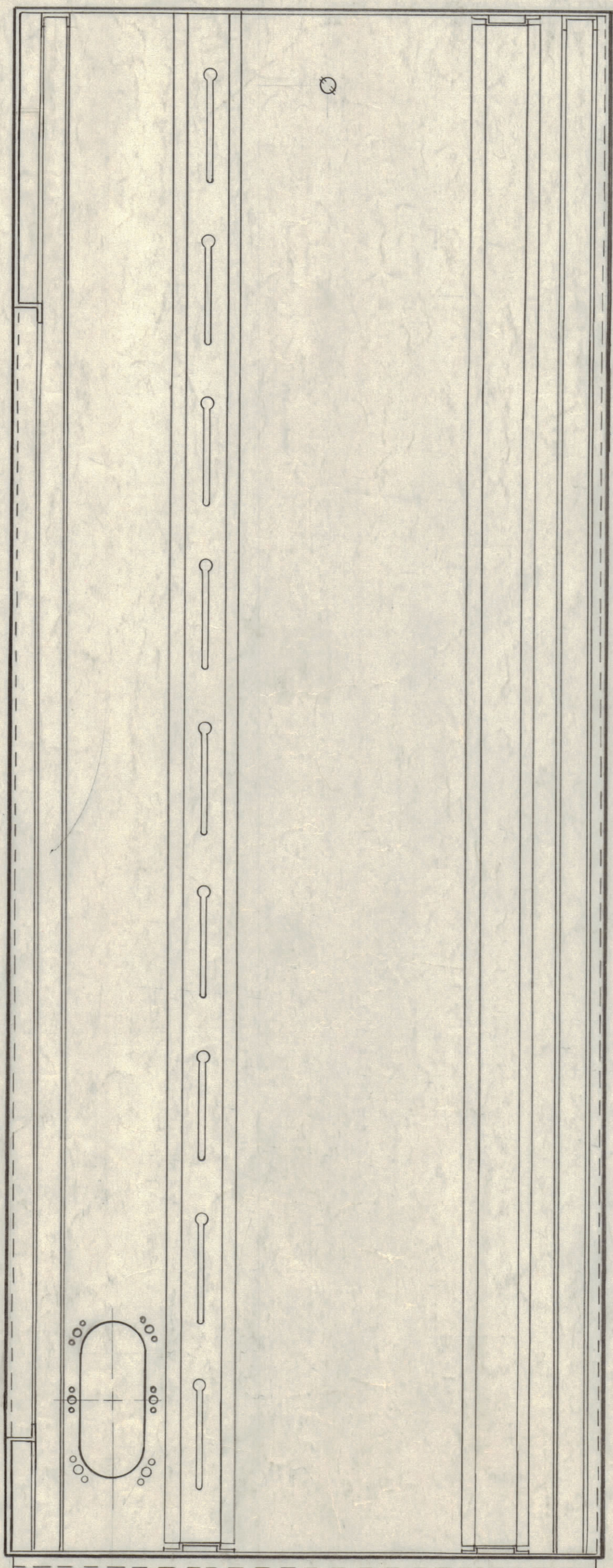
REQ. ITEM	PART NO.	DESCRIPTION	SYMBOL
THE TECHNICAL MATERIEL CORP. MAMARONECK, NEW YORK			
RACK, BASIC			
MATERIAL			
TYPE & TEMPER. HEAT TREAT. SPEC.			
FINISH & SPEC. NO.			
DRAWN		CHECKED	FINAL APPROVAL
ELEC. DES. APP.		MECH. DES. APP.	SHEET 2 OF 6

MS 2509 M

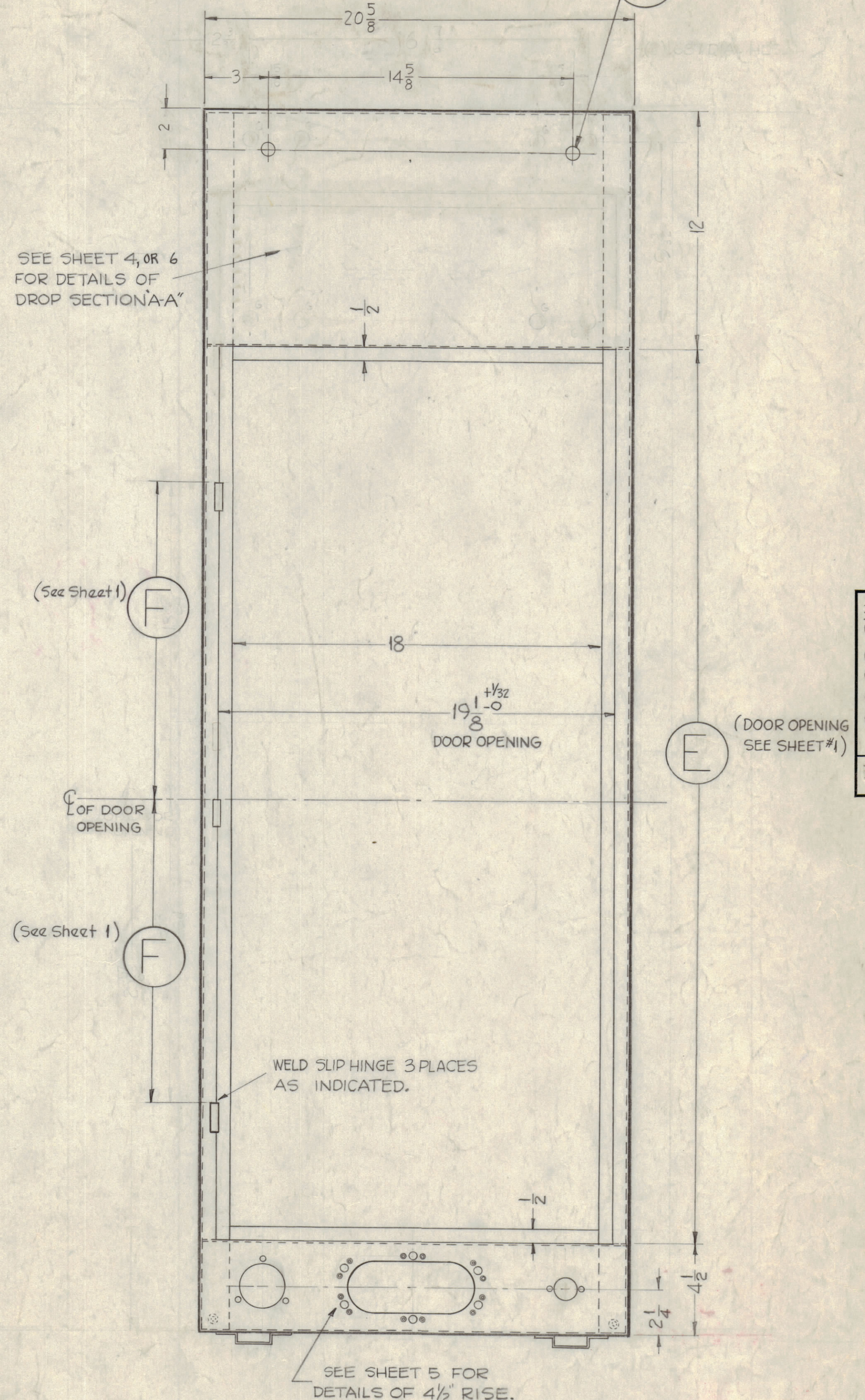




M	SEE SHEETS	4-4-67	18078	L.A.K.	<i>[Signature]</i>		
L	SEE SHEETS 1, 4 & 6	12-5-66	17371	R.M.E.	<i>[Signature]</i>		
K	SEE SHEET 1 OF 6 REV. "K"	7-12-65	12663	J.F.	<i>[Signature]</i>		
J	SEE SHEETS 1 & 6 REV. "J" REAR VIEW; "OK" ADD. TO "SEE SHEET 4..." NOTE.	1-6-65	13203	J.F.	<i>[Signature]</i>		
H	SEE SHEET 1 OF 5	10-12-64	12609	J.F.	<i>[Signature]</i>		
G	SEE SHEET 1 OF 5	6/17/64	11556	A.M.	<i>[Signature]</i>		
SYM	ZONE	DESCRIPTION	DATE	CH. NO.	DRAFTS	CHECKER	ENG. APP.
UNLESS OTHERWISE SPECIFIED:		SCALE					
DIMENSIONS ARE IN INCHES		MAXIMUM ALLOWABLE TOLERANCES HAVE BEEN DETERMINED AND ANY DEVIATIONS WILL BE CAUSE FOR REJECTION. REMOVE ALL BURRS & SHARP EDGES					
TOLERANCES ON		ANGLES ± 1/2°					
FRACTIONS ± 1/64		DECIMALS ± .005					



— RIGHT SIDE —  
(INSIDE)  
(SEE LEFT SIDE FOR DETAILS.)

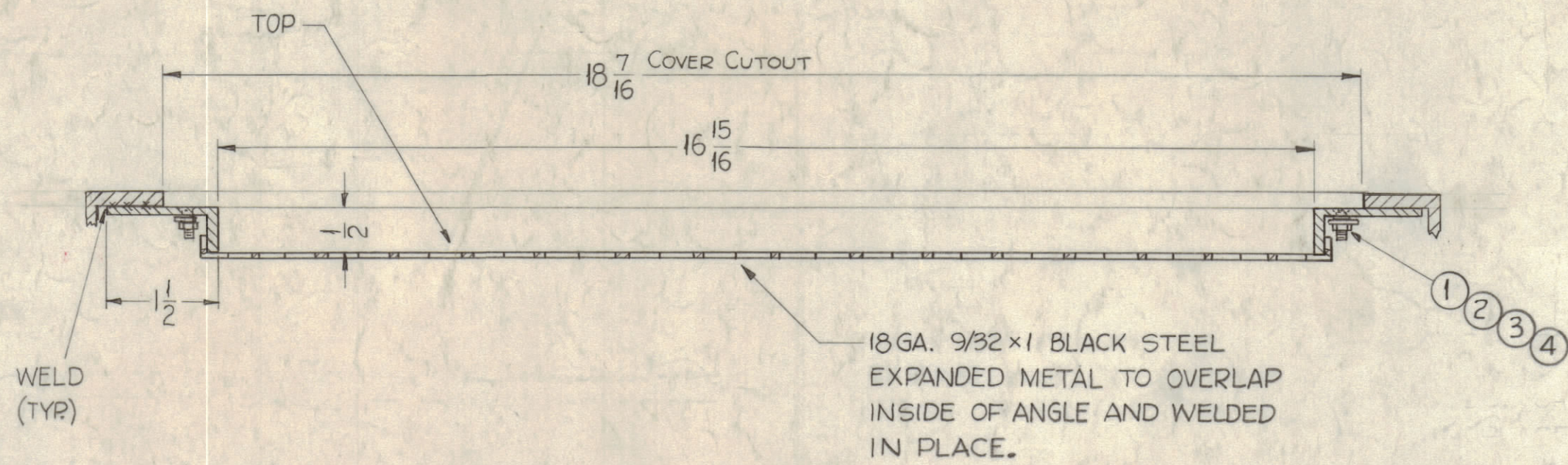


— REAR VIEW —

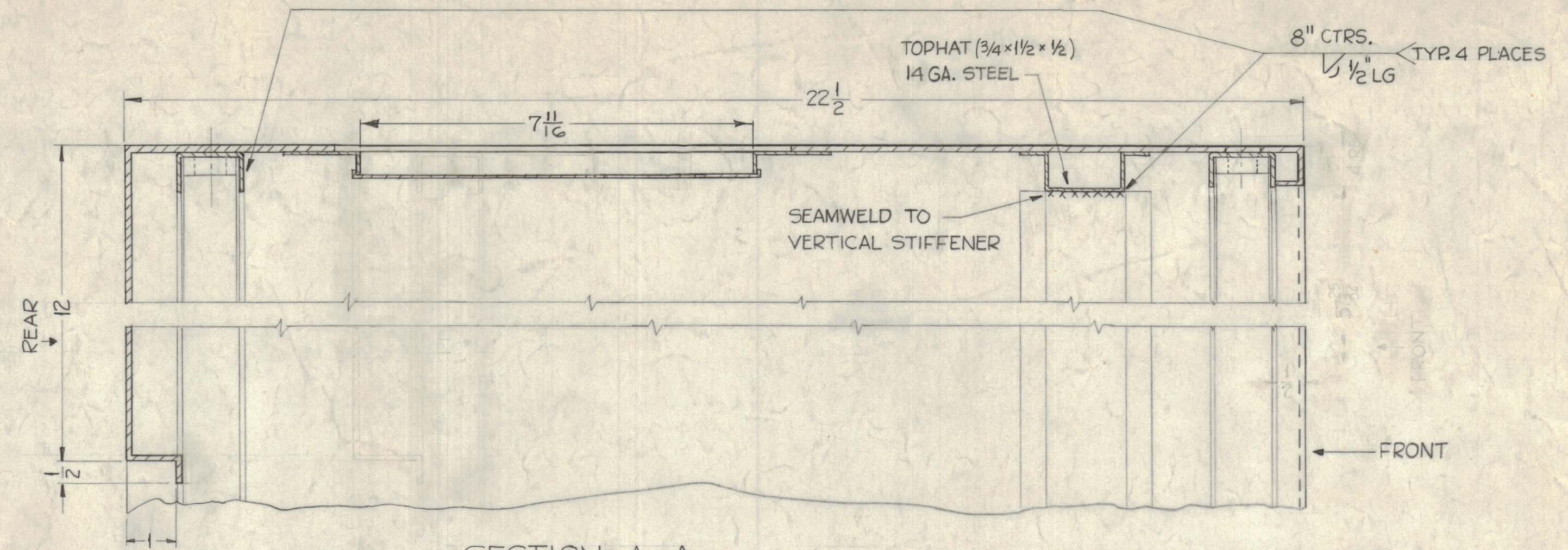
REQ. ITEM	PART NO.	DESCRIPTION	SYMBOL
THE TECHNICAL MATERIEL CORP. MAMARONECK, NEW YORK			
RACK, BASIC			
MATERIAL			
1-26-61			
TYPE & TEMPER		HEAT TREAT. SPEC.	
FINISH & SPEC. NO.		ELEC. DES. APP. MECH. DES. APP.	
DRAWN		CHECKED	
DATE		FINAL APPROVAL	
REQ. PER UNIT		MS 2509	
USED ON		SHEET 3 OF 6	

MS 2509 M

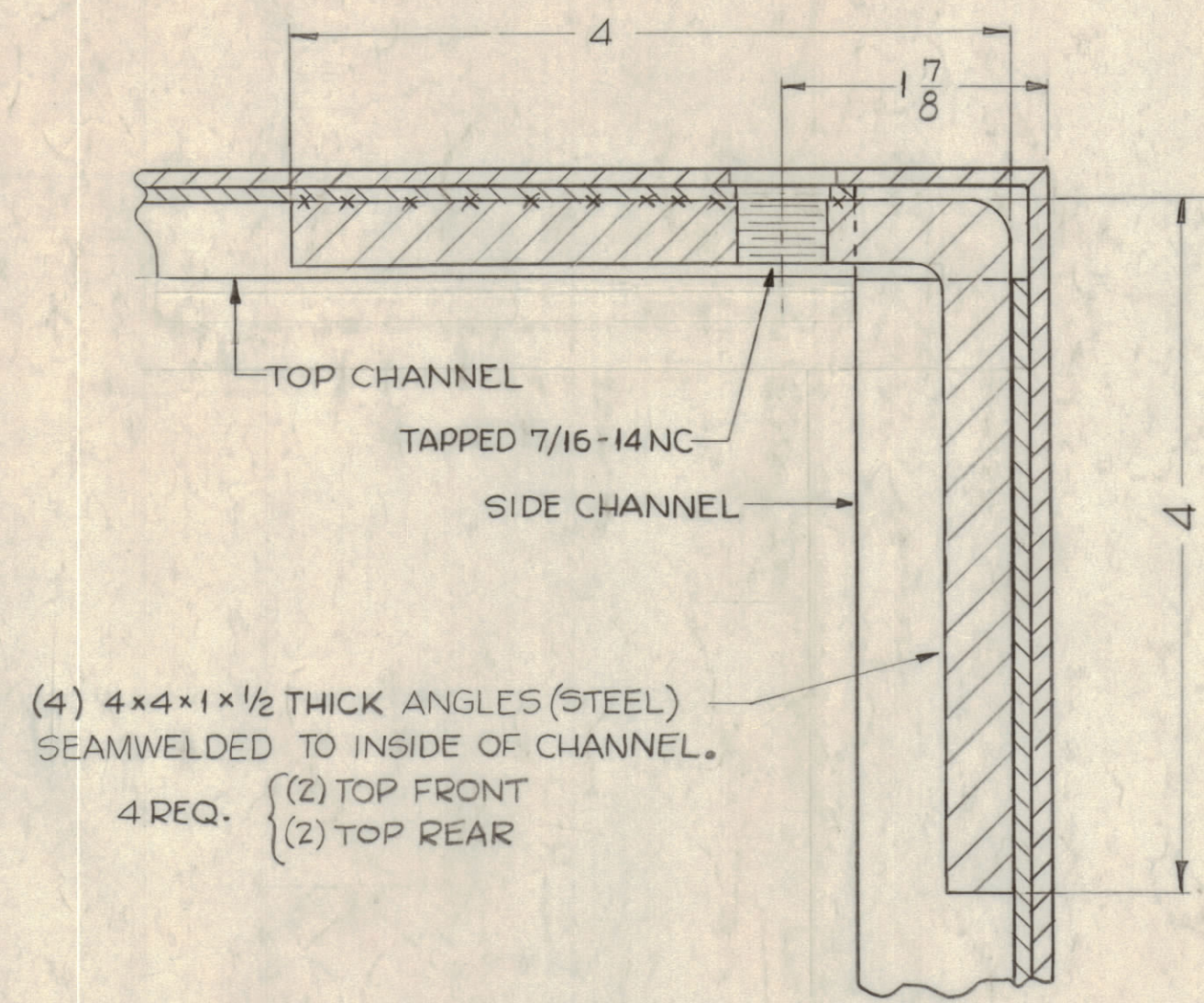




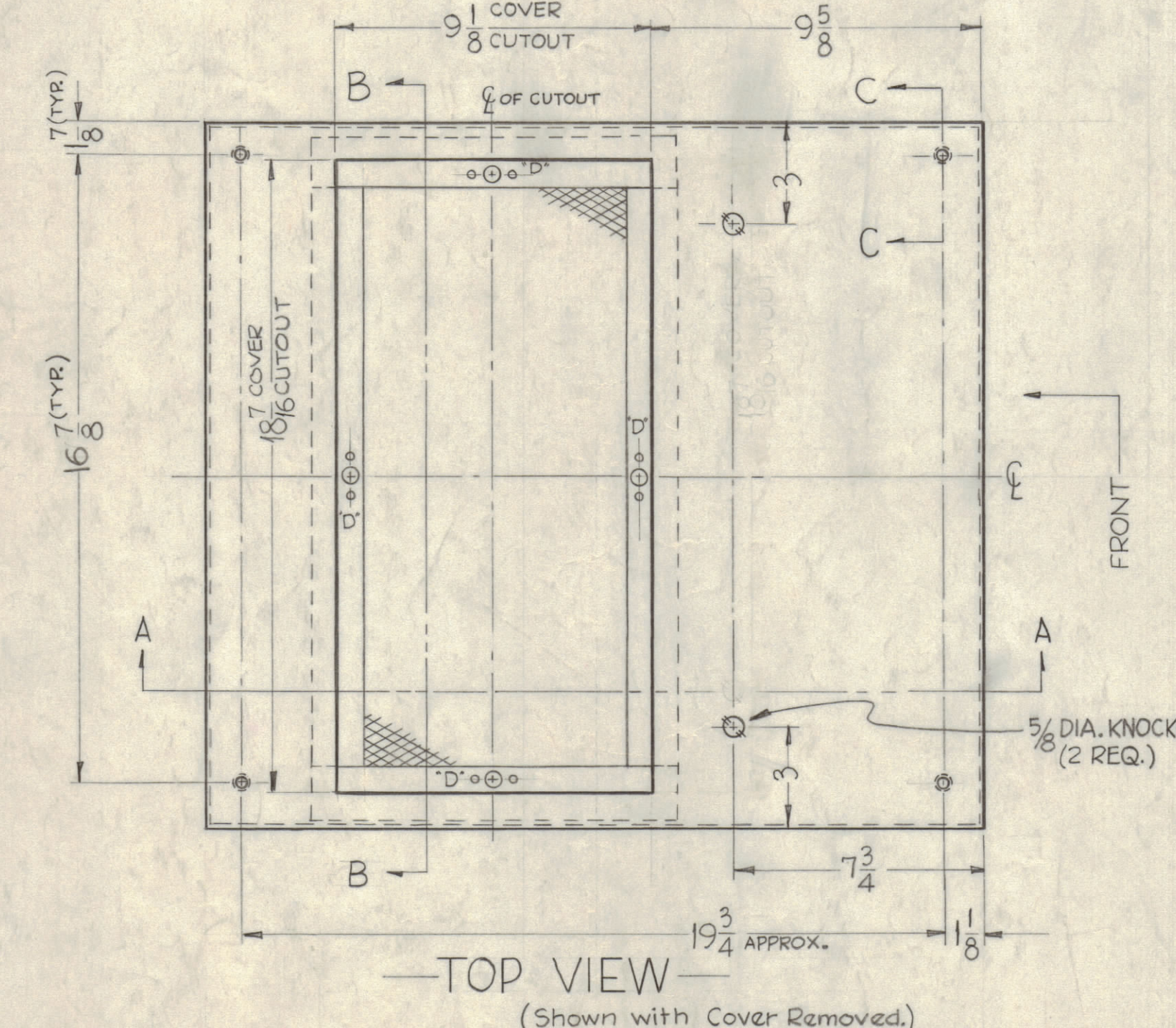
SECTION B-B



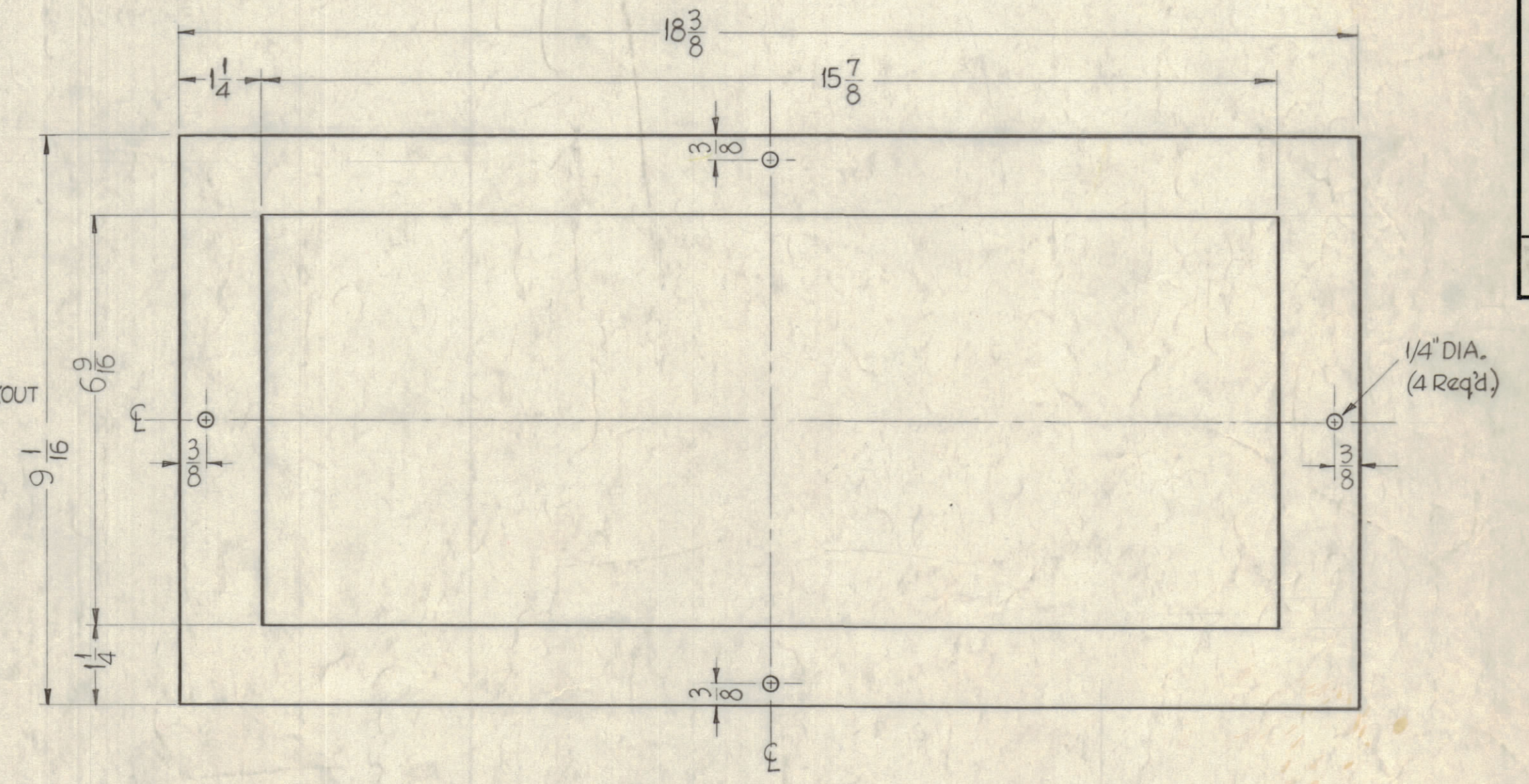
SECTION A-A



SECTION C-C (TYP)  
(Ref. - Pictorial on Sheet 2.)

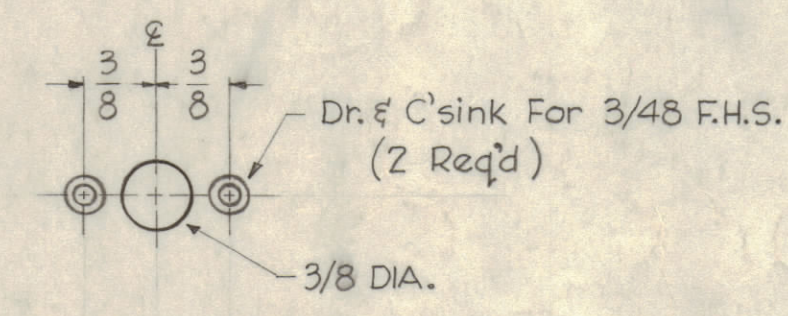


TOP VIEW  
(Shown with Cover Removed.)



COVER DETAIL - 1 REQ FOR EACH CUTOUT REQUIRED.

NOTE - COVER TO BE SUPPLIED BY MANUFACTURER.  
REF - TMC #MS-1900 FOR STOCKING AND SPARE PARTS PURPOSES ONLY.



"D" DETAIL  
(4 REQ'D.)

M	SEE SHEET 5	4-4-67	18078	L.A.K.	W	W
L	ADD REQ NOTE TO COVER DETAIL. SEE SHEETS 1, 2, 3, 4, 5, 6	12-5-66	17379	RME		
K	SEE SHEET 1 OF 6 REV. "K"	3-12-65	13663	R	R	
J	QTY. NOTE ADDED TO "COVER DETAIL"; SEE SHEETS 1, 3, 4, 6 REV. "J"	1-6-65	13203	R		
H	SEE SHEET 1 OF 5	10-12-64	12609	R		
G	SEE SHEET 1 OF 5	6-17-64	11556	A.M.		
F	PICTORIAL CORRECTED	6-5-63	9172			
E	HWK CLARIFIED, 7/16 DIM ADDED	4-28-63	8870			
D	ITEMS 2, 3, 4 QUAN. WAS 4	8-23-62	7112			
C	SEE SHEET 1 OF 5	7-25-62	6936	S.R.F.		
B	SEE SHEET 1 OF 5	10-11-61	5485	R		
A	SEE SHEETS 1, 2 TOP HAT SUPPORT WAS 11 GA DIA. 16 7/8 WAS 17 1/8	8-4-61	5363	G.D.L.		

NOTICE TO PERSONS RECEIVING THIS DRAWING  
THE TECHNICAL MATERIEL CORPORATION claims proprietary right in the material disclosed herein. This drawing is issued in confidence for engineering information only and may not be reproduced or used to manufacture anything shown hereon without permission from THE TECHNICAL MATERIEL CORPORATION to the user. This drawing is loaned for mutual assistance and is subject to recall at any time.  
Property of:  
THE TECHNICAL MATERIEL CORPORATION  
MAMARONECK, NEW YORK

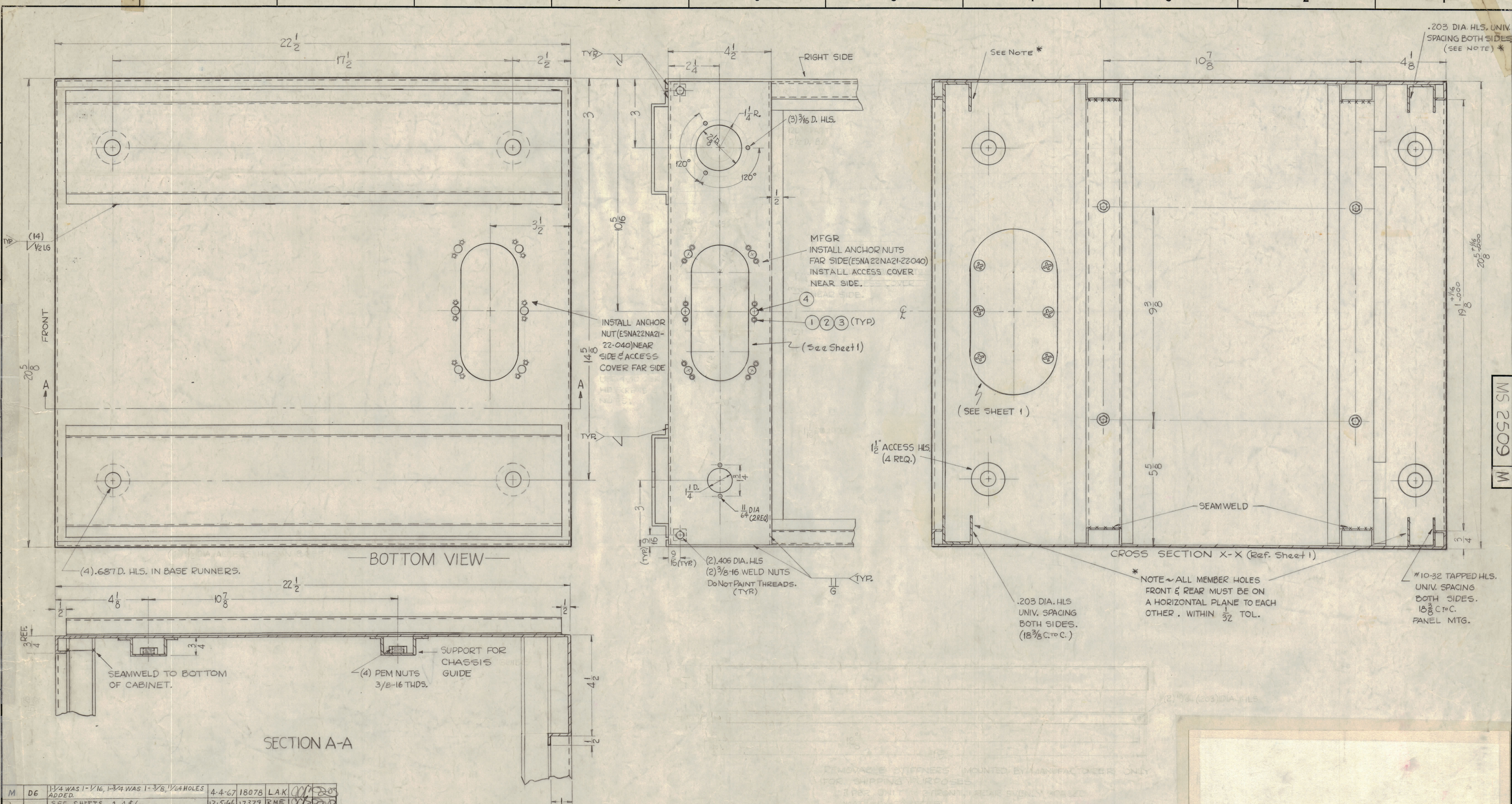
4	6	F5-110-1	Stud, Slotted Head	
4	5	F5-109-3	Ring, Stud Retaining	
8	4	NTH0348BN6	Nut, Hex	
8	3	LWS03MRN	Lockwasher, Split	
8	2	SCFP0348BN6	Screw, Machine	
4	1	F5-102-1	Clip, Spring "S"	

REQ. UNIT	MODEL	SECTION	ASSY. NO.	DATE	TYPE & TEMPER.	HEAT TREAT. SPEC.	FINISH & SPEC. NO.	ELEC. DES. APP.	MECH. DES. APP.	SHEET	OF
				1-26-61						MS 2509	M

UNLESS OTHERWISE SPECIFIED:		SCALE
DIMENSIONS ARE IN INCHES		MAXIMUM ALLOWABLE TOLERANCES HAVE BEEN DETERMINED AND ANY DEVIATIONS WILL BE CAUSE FOR REJECTION. REMOVE ALL BURRS & SHARP EDGES
TOLERANCES ON FRACTIONS ± 1/64	DECIMALS ± .005	ANGLES ± 1/2°

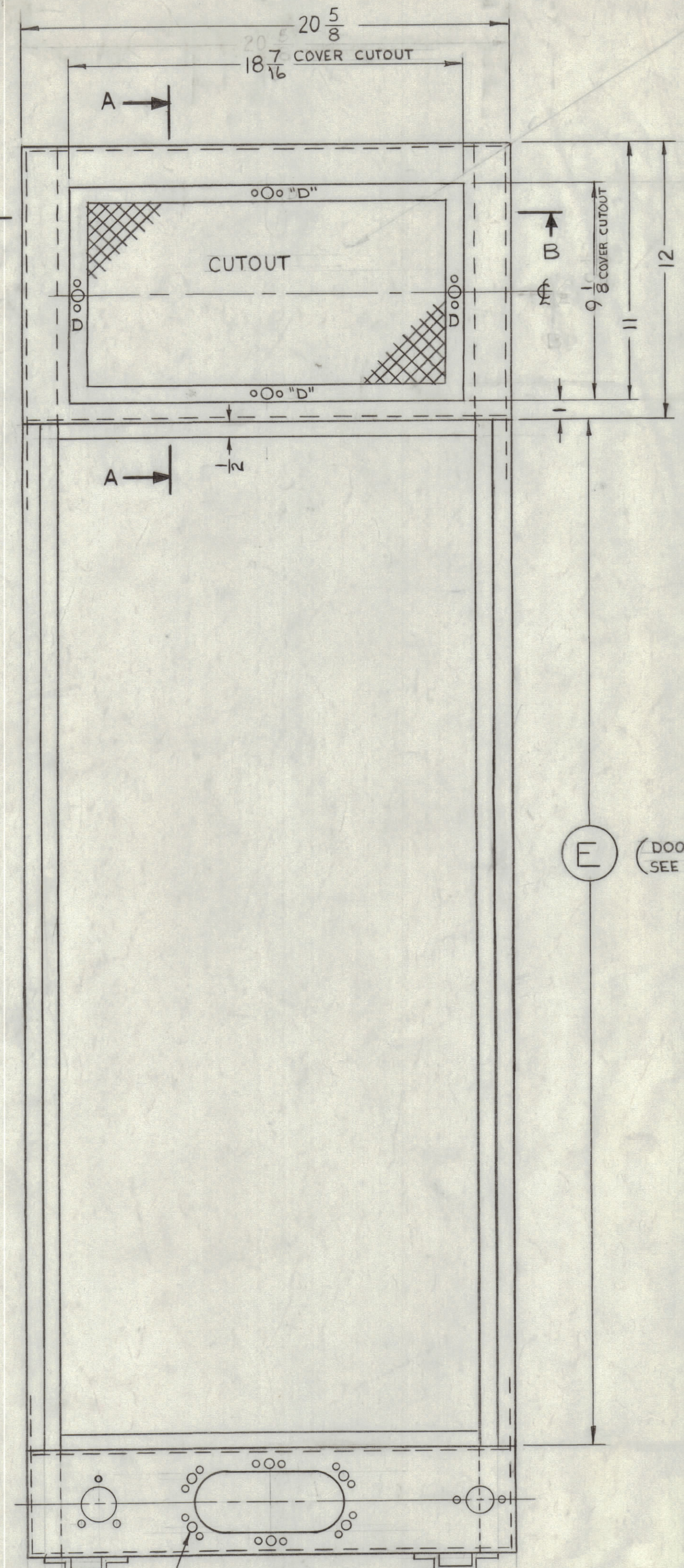
MS 2509 M



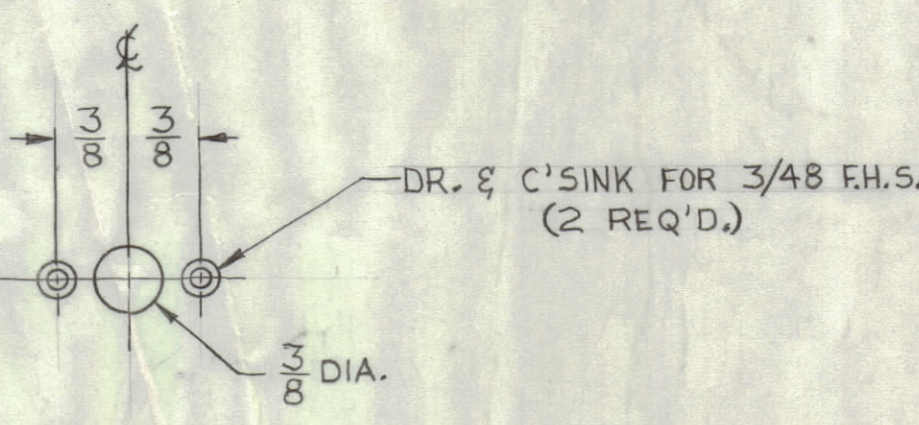
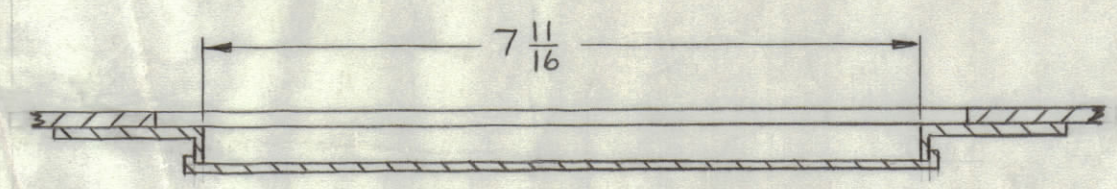
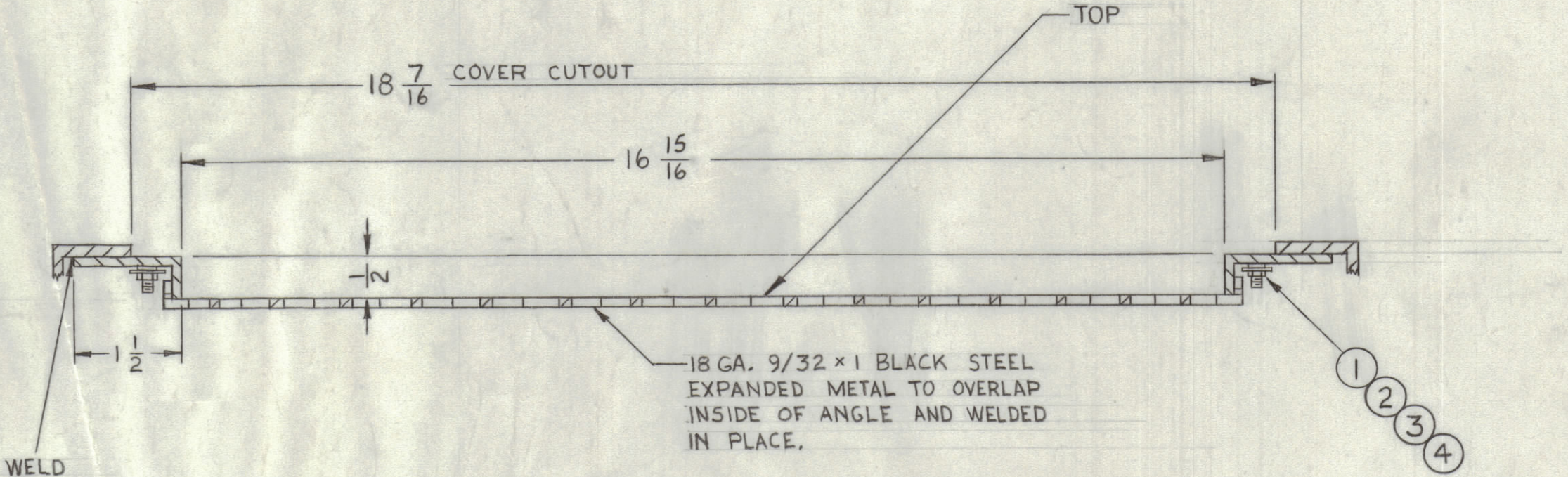




REVISIONS									
ZONE	SYM	DESCRIPTION	DATE	E.M.N. NO.	DRAFT	CHKD	APPD		
J		SHEET "6" ADD; SEE SHEETS 1 & 3 REV. "J"	1-6-65	13203	RE				
K		SEE SHEET 1 OF 6 REV. "K"	3-12-65	13663	RE				
L		CHG'D 18 7/8 TO 18 7/16. DELE "NO COVER SUPPL. 18 7/8". DELE MS2509-4 REF. SEE SHEETS 1 & 4	12-5-66	17379	RME				
M		SEE SHEETS 1 & 4	4-4-67	18078	L.A.K.				



REPRODUCTION SUPPLIED  
WITH REAR CUTOUTS  
SHEET 4 OF 5. NO COVER  
SUPPLY TO WITH REAR CUTOUT.



SEE SHEET 5 FOR  
DETAILS OF 4 1/2" RISE

REAR VIEW FOR  
MS2509-4 ONLY

REQ'D.	ITEM	PART NUMBER	DESCRIPTION	SYMBOL
8	4	NTH0348BN6	NUT, PLAIN, HEX	
8	3	LW503MRN	WASHER, LOCK, SPLIT	
8	2	SCPP0348BN6	SCREW, MACHINE	
4	1	F5102-1	LOCKSPRING	

LIST OF MATERIAL				
MATERIAL	THE TECHNICAL MATERIEL CORP. MAMARONECK, NEW YORK			
FINISH	TITLE RACK, BASIC			
UNLESS OTHERWISE SPECIFIED DIMENSIONS ARE IN INCHES AND INCLUDE CHEMICALLY APPLIED OR PLATED FINISHES	DRAWN <i>J. Savana</i>	DATE 1-6-65	FINAL APPROVAL <i>KAL</i>	DATE
DECIMALS X ± .05 XX ± .01 XXX ± .005	CHECKED <i>[Signature]</i>	DATE	ELECT. DES. <i>[Signature]</i>	DATE
THE CONTENTS OF THIS DRAWING ARE THE EXCLUSIVE PROPERTY OF THE TECHNICAL MATERIEL CORP. ITS UNAUTHORIZED USE OR REPRODUCTION IN WHOLE OR IN PART IS STRICTLY FORBIDDEN.	TOLERANCES FRACTIONS ± 1/64 ANGLES ± 30'	MECH. DES. <i>[Signature]</i>	DATE	DATE
			MS2509	M
			SHEET 6 OF 6	REV. LTR.

NOTES

MS2509  
M