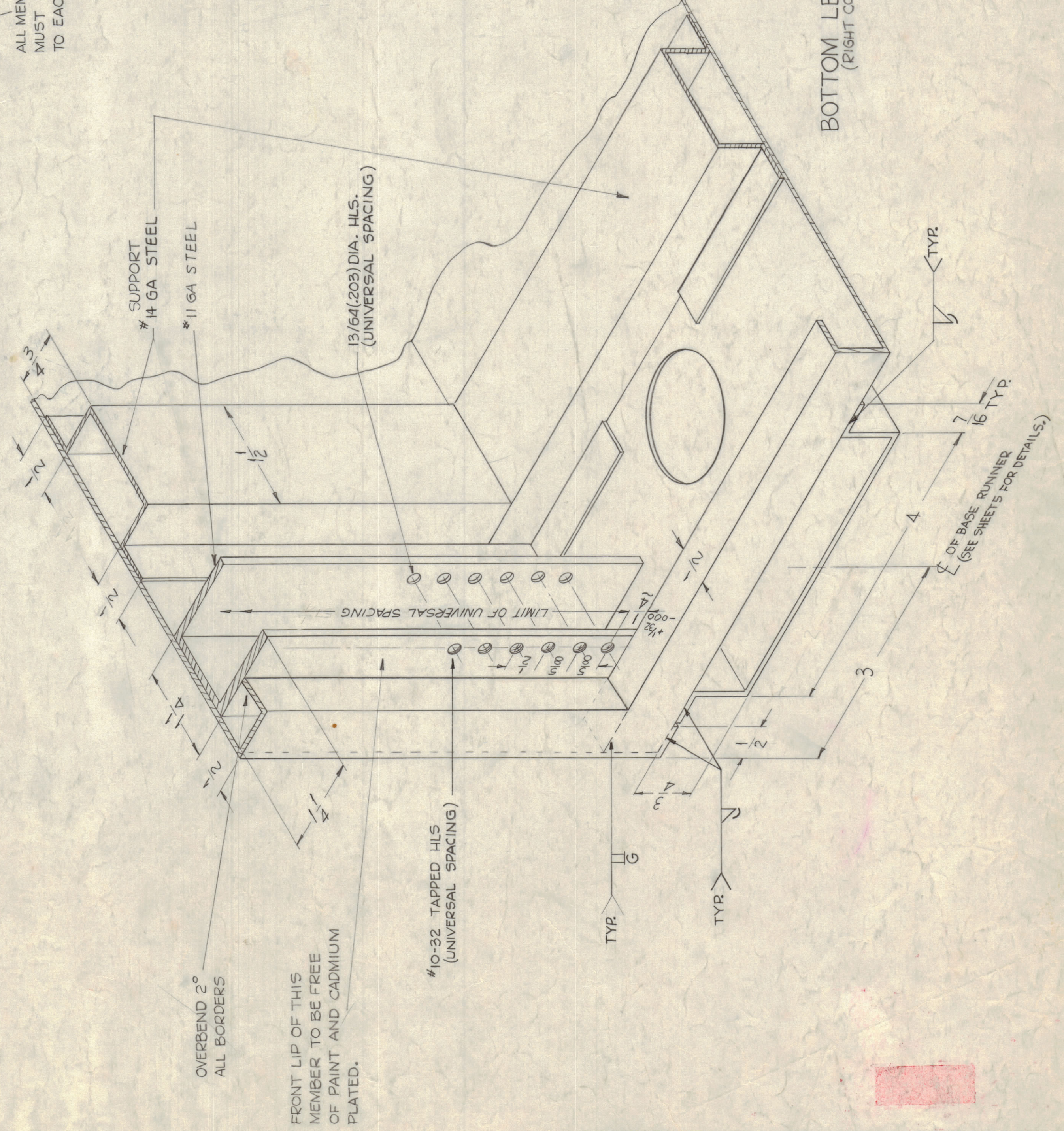
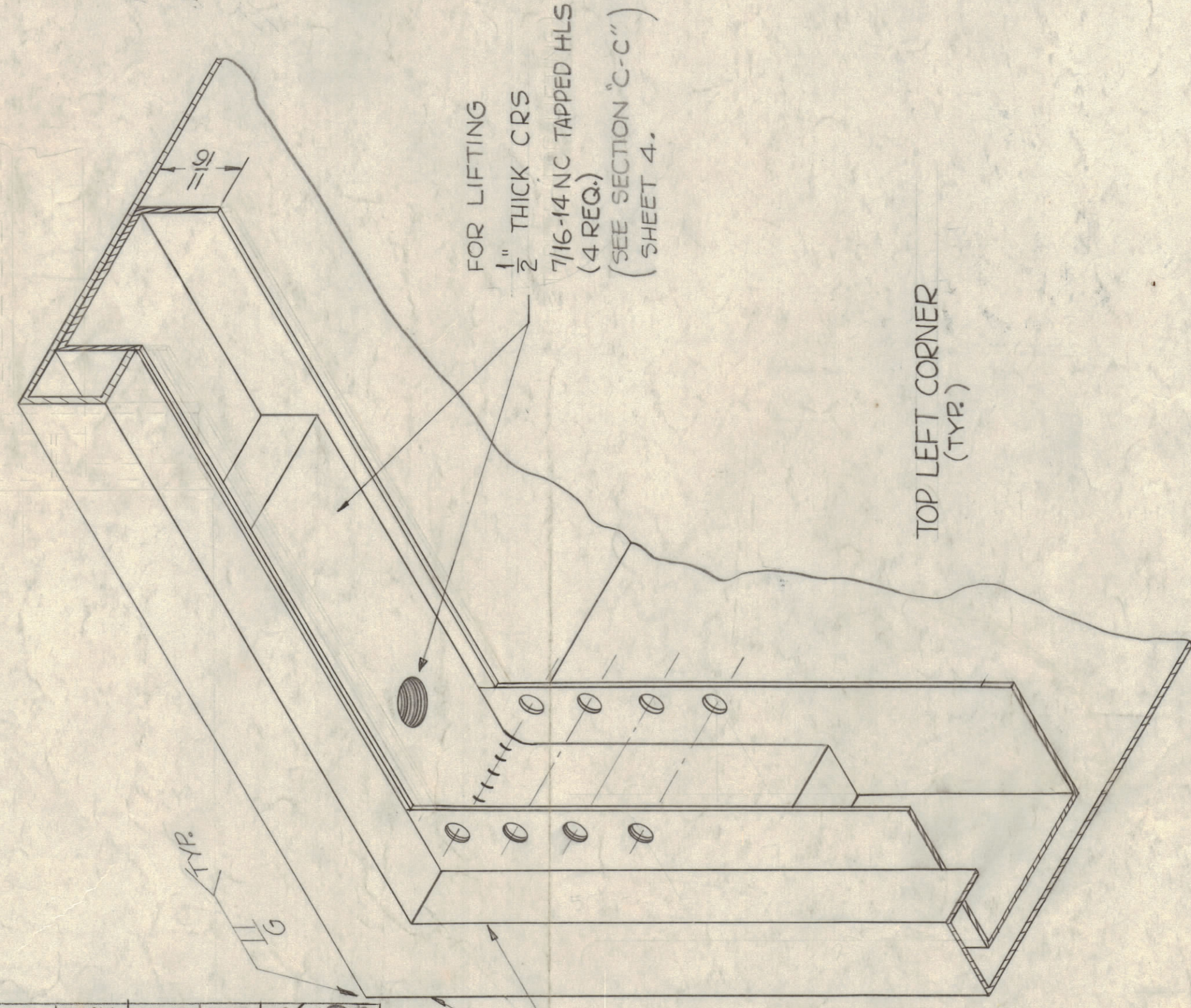


ALL MEMBER HOLES LEFT & RIGHT MUST BE ON A HORIZONTAL PLANE TO EACH OTHER WITHIN 1/64 TOL.



BOTTOM LEFT CORNER (RIGHT CORNER SAME)

NOTICE TO PERSONS RECEIVING THIS DRAWING
 THE TECHNICAL MATERIEL CORPORATION claims proprietary right in the material disclosed hereon. This drawing is issued in confidence for engineering information only and may not be reproduced or used to manufacture anything shown herein without permission from THE TECHNICAL MATERIEL CORPORATION to the user. This drawing is loaned for mutual assistance and is subject to recall at any time.

Property of:
 THE TECHNICAL MATERIEL CORPORATION
 MAMARONECK, NEW YORK

L	SEE SHEETS 1, 3, 4, 6	12-506	17379	RME		
K	SEE SHEET 1 OF 6 REV. "K"	2-12-65	17663	RF		
J	SEE SHEETS 1, 3, 6 REV. "J"	1-6-65	15203	RF		
H	SEE SHEET 1 OF 5	10-12-64	12609	RF		
G	SEE SHEET 1 OF 5	6-17-64	11556	A.M.		
F	11 CHANNEL PICTORIAL CORRECTED	6-5-63	9172	RF		
E	SEE SHEETS 1, 3, 5	8-28-63	5870	RF		
D	SEE SHEET 4 OF 5	8-29-63	7112	RF		
C	SEE SHEETS 1 OF 5	7-25-62	6936	S.R.G.		
B	SEE SHEETS 1 & 3	10-11-61	5685	RF		
A	SEE SHEET 1 UNIVERSAL HOLE SUPPORT 11 GA SHOWN E-S TO PHOTO SUPPORT WAS 12 GA.	8-4-61	5363	G.D.L.		

SYM	ZONE	DESCRIPTION	DATE	CH. NO.	DRAFTS	CHECKER	ENG. APP.
M		SEE SHEET 5 OF 6	4-4-67	18078	L.A.K.		
SYM	ZONE	DESCRIPTION	DATE	CH. NO.	DRAFTS	CHECKER	ENG. APP.

SCALE	MAXIMUM ALLOWABLE TOLERANCES HAVE BEEN DETERMINED AND ANY DEVIATIONS WILL BE CAUSE FOR REJECTION. REMOVE ALL BURRS & SHARP EDGES
-------	--

REQ. PER UNIT	MODEL	SECTION	ASSY. NO.	DATE
				11/26/61

REQ. ITEM	PART NO.	DESCRIPTION	SYMBOL
THE TECHNICAL MATERIEL CORP. MAMARONECK, NEW YORK			
RACK, BASIC			
MATERIAL			
TYPE & TEMPER.	HEAT TREAT. SPEC.	DRAWN: [Signature] CHECKED: [Signature] FINAL APPROVAL: [Signature]	
FINISH & SPEC. NO.		ELEC. DES. APP.	MECH. DES. APP.
		MS 2509	
		SHEET 2 OF 6	

MS 2509 M