

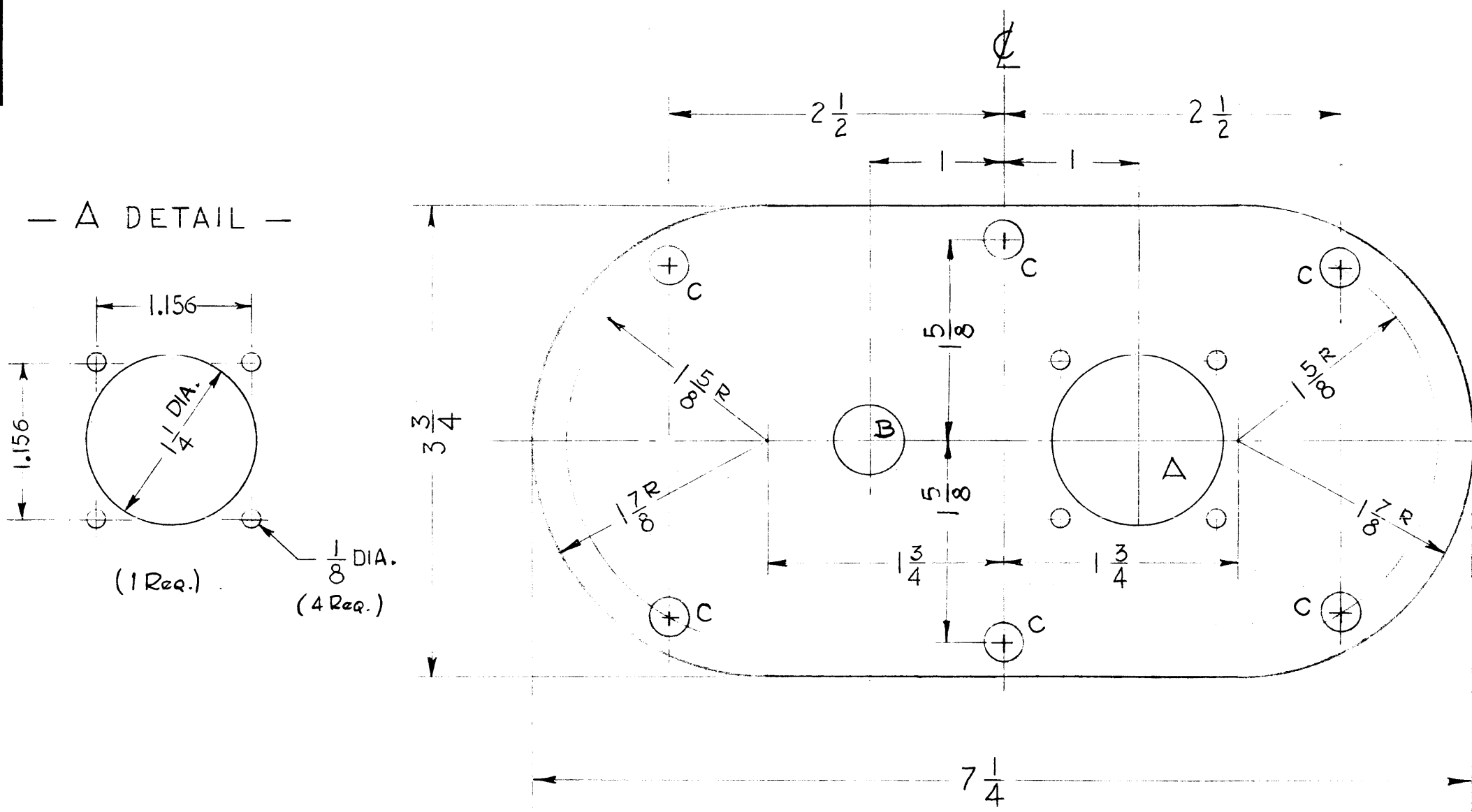
MS-2500

MATERIAL CODE	MATERIAL	PRIME OR DIP	FINISH
S	STEEL 14 GA.	5114 ZINC CHROM.	5220 TMC RCAF BLUE GRAY ENAMEL SMOOTH
A	ALUMINUM 126A-5052-H32		S404-IRIDITE

FINISH NOTE:

DEGREASE & PREPARE SURFACE
FOR FINISHES AS PER TABLE

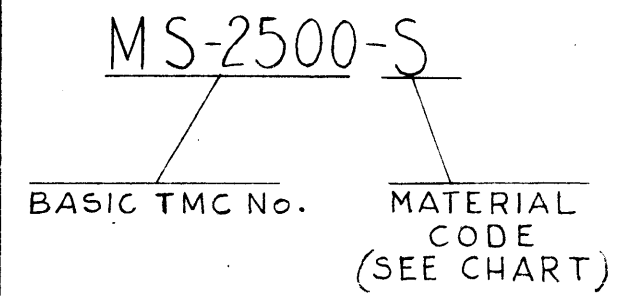
NOTE: OR PRIME AN PAINT TO CUSTOMERS SPEC.



HOLES -

- A - SEE DETAIL
- B - 1/2" DIA. 1 Req.
- C - 9/32 6 Req.

TMC PART # TO BE IN THE FOLLOWING FORM:



LD-888 (FOR KIT-1)
REF: LD-889 (FOR RAK-11B)

SYM	DESCRIPTION	DATE	CH. NO.	DRAFTS	CHECKER	ENG. APP.

UNLESS OTHERWISE SPECIFIED:
DIMENSIONS ARE IN INCHES
TOLERANCES ON FRACTIONS ± 1/64 DECIMALS ± .005 ANGLES ± 1/20

SCALE: FULL, DO NOT SCALE
MAXIMUM ALLOWABLE TOLERANCES HAVE BEEN DETERMINED AND ANY DEVIATIONS WILL BE CAUSE FOR REJECTION.
REMOVE ALL BURRS AND SHARP EDGES

REQ. PER UNIT	MODEL	SECTION	ASS'Y. NO.	DATE
	SBT-1K(E)			1-6-61
	USED ON			

REQ.	ITEM	PART NO.	DESCRIPTION	SYMBOL						
	SEE TABLE	STOCK SIZE	THE TECHNICAL MATERIEL CORP. MAMARONECK, NEW YORK							
	SEE TABLE	MATERIAL	MTG. PLATE, INTERCONNECTING CABLE							
			<table border="1"> <tr> <td>LD-888</td> <td>LD-889</td> <td></td> </tr> <tr> <td>DRAWN</td> <td>CHECKER</td> <td>FINAL APPROVAL</td> </tr> </table>	LD-888	LD-889		DRAWN	CHECKER	FINAL APPROVAL	
LD-888	LD-889									
DRAWN	CHECKER	FINAL APPROVAL								
	SEE NOTE & TABLE	FINISH & SPEC. NO.	ELEC. DES. APP. MECH. DES. APP.	MS-2500						