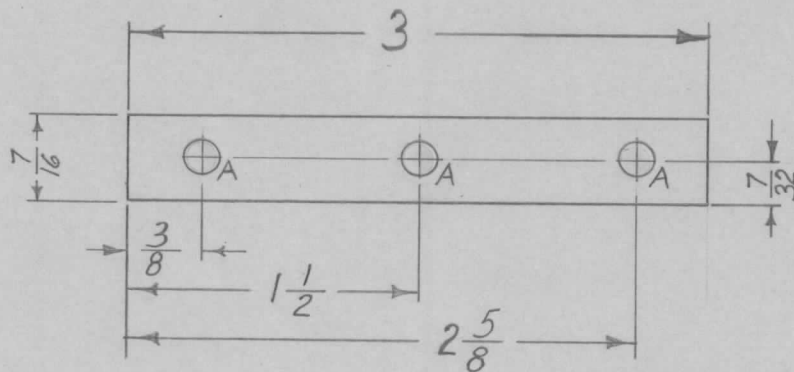


REQ. PER. UNIT	USED ON			MS-2403	A
	MODEL	ASS'Y. NO.	DATE		
2	CHG-1	OVEN	9-13-60		

A ~ $\frac{11}{64}$ DIA. 3 REQ.

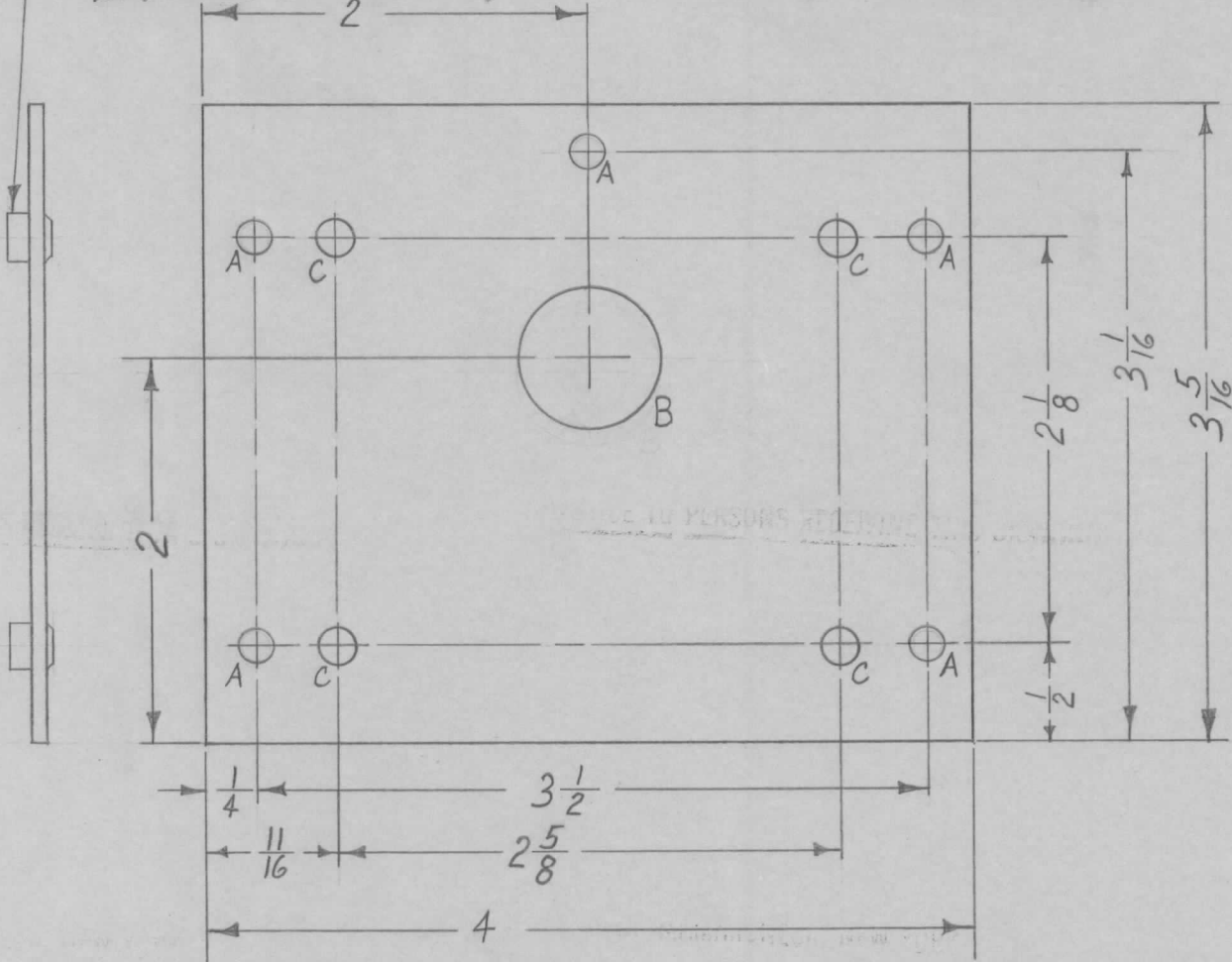


ISSUE	ITEM	CHANGED FROM	DATE	CH. NO.	DRAFTS	CHECKER	ENG. APP.	REQ.	ITEM	PART NO.	DESCRIPTION	SYMBOL			
										.064	THE TECHNICAL MATERIEL CORP. MAMARONECK, NEW YORK	A			
										STOCK SIZE					
										ALUMINUM	STIFFENER, FINGER STOCK				
										MATERIAL					
										5052-H32					
										TYPE & TEMPER	CHECKED	MS-2403			
										HEATTREAT. SPEC.	DRAWN		A		
										S404 YELL. IRIDITE					
										FINISH & SPEC. NO.	ELEC. DES. APP				
TOLERANCES			SCALE: FULL												
DEC. DIM. ±			MAXIMUM ALLOWABLE TOLERANCES HAVE BEEN DETERMINED AND ANY DEVIATIONS WILL BE CAUSE FOR REJECTION. REMOVE ALL BURRS AND SHARP EDGES												
FRAC. DIM. ± $\frac{1}{64}$															
ANGULAR DIM. ±															

MOUNT ITEM 1 TE-108-19 IN ALL "C" HOLES. AFTER FINISHING

REQ. PER. UNIT	USED ON		
	MODEL	ASS'Y. NO.	DATE
1	CHG-1	OVEN/BSC	9-14-60

MS-2405 A



A - 1/4 DIA. 5 REQ.
 B - 3/4 DIA. 1 "
 C - .187 DIA. 4 "

NOTICE TO PERSONS RECEIVING THIS DRAWING

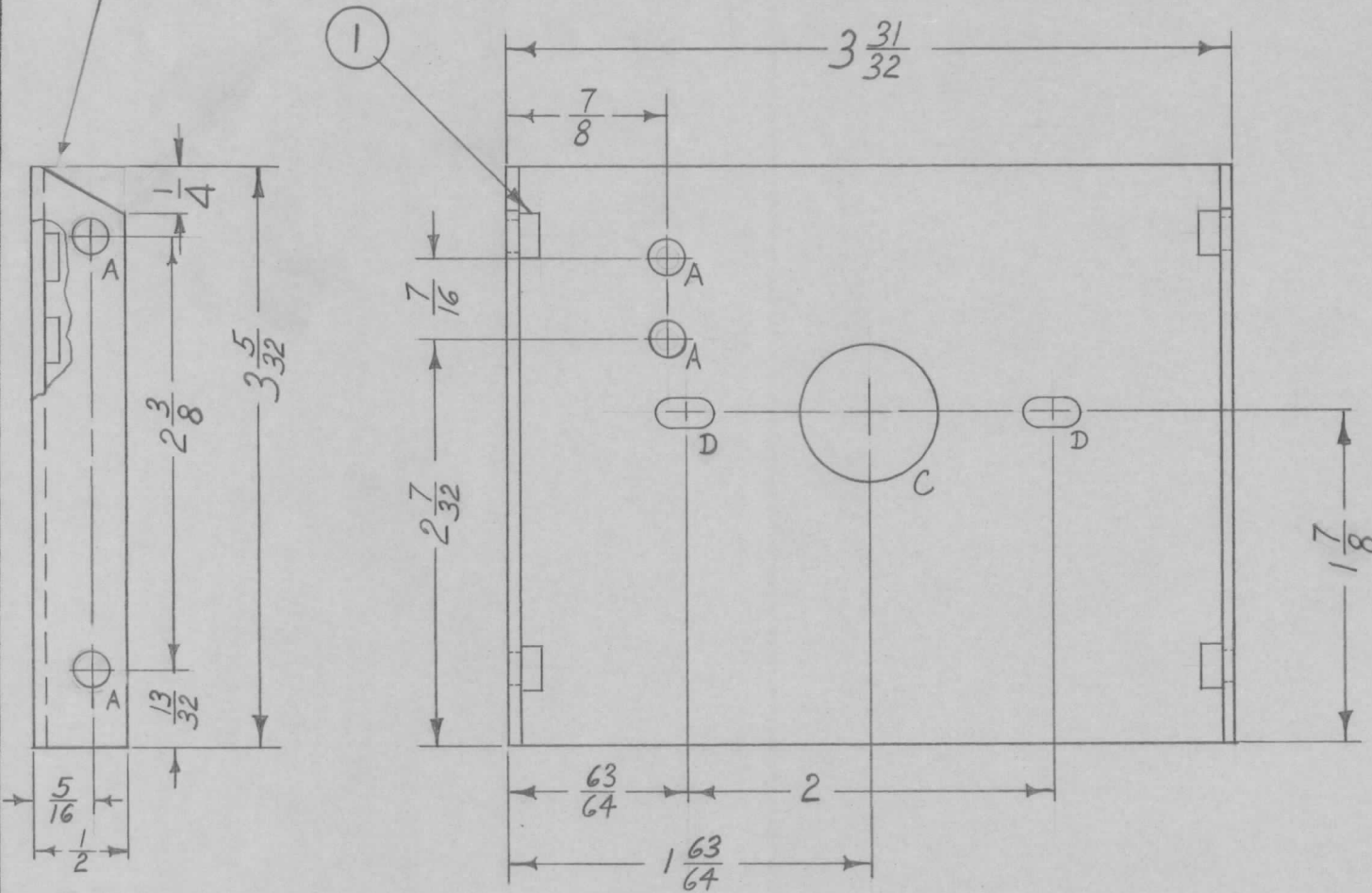
THE TECHNICAL MATERIEL CORPORATION claims proprietary right in the material disclosed hereon. This drawing is issued in confidence for engineering information only and may not be reproduced or used to manufacture anything shown hereon without permission from THE TECHNICAL MATERIEL CORPORATION to the user. This drawing is loaned for mutual assistance and is subject to recall at any time.

Property of:
 THE TECHNICAL MATERIEL CORPORATION
 MAMARONECK, NEW YORK

				4	1	TE-108-19	STANDOFF, RIVET TYPE										
				REQ. ITEM	PART NO.			DESCRIPTION			SYMBOL						
				.064			THE TECHNICAL MATERIEL CORP.										
				STOCK SIZE			MAMARONECK, NEW YORK										
				ALUMINUM			OVEN SHELL, FRONT COVER										
				MATERIAL													
				5052-H32			DRAWN			CHECKED		FINAL APPROVAL					
				TYPE & TEMPER			HEAT TREAT. SPEC.										
				S404 YELL. IRIDITE													
				FINISH & SPEC. NO.			ELEC. DES. APP			MECH. DES. APP							
ISSUE ITEM				CHANGED FROM				DATE		CH. NO.		DRAFTS		CHECKER		ENG. APP.	
A 1				"A" HOLE WERE 9/64 D				11-1-60		3351		[Signature]		[Signature]		[Signature]	
TOLERANCES				SCALE: FULL													
DEC. DIM. ±				MAXIMUM ALLOWABLE TOLERANCES HAVE BEEN DETERMINED AND ANY DEVIATIONS WILL BE CAUSE FOR REJECTION.													
FRAC. DIM. ± 1/64				REMOVE ALL BURRS AND SHARP EDGES													
ANGULAR DIM. ±																	
								MS-2405			A						

REQ. PER. UNIT	USED ON			MS-2408	C
	MODEL	ASS'Y. NO.	DATE		
1	CHG-1	OVEN	9-14-60		

OPPOSITE SIDE THE SAME



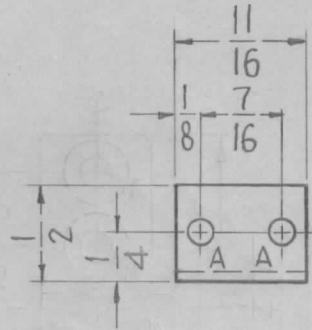
- A- .161-.164 D. (FOR NT-129-440-4) 6 REQ.
- B- $\frac{7}{64}$ DIA. DELETED 2"
- C- $\frac{3}{4}$ DIA. 1"
- D- $\frac{5}{32} \times \frac{5}{16}$ SLOT 2"

NOTE:
USE MATERIAL THICKNESS FOR
MAX. RADIUS ON ALL BENDS
UNLESS OTHERWISE SPECIFIED.

6	1	NT-129-440-4	NUT, ROUND, SWAGE TYPE			
REQ.	ITEM	PART NO.	DESCRIPTION			SYMBOL
		.064	THE TECHNICAL MATERIEL CORP.			
		ALUMINUM	MAMARONECK, NEW YORK			
			SWITCH BRACKET, OVEN			
		5052-H32	DRAWN			
		S 404 YELL. IRIDITE	CHECKED			
			FINAL APPROVAL			
			ELEC. DES. APP			
			MECH. DES. APP			

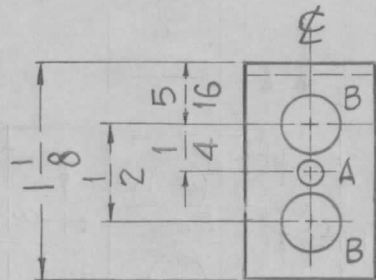
C	1	1/4" NOTCH ADDED	11-22-60	3540	DM	QCB	
B	2	TWO "A" HOLES ADDED	10-31-60	3351	WJF		
B	1	TWO "B" HOLES DELETED					
A	2	NOTE ADDED					
A	1	1 7/8 DIM WAS 1 13/16	10-17-60	3210	WJF		
ISSUE	ITEM	CHANGED FROM	DATE	CH. NO.	DRAFTS	CHECKER	ENG. APP.
TOLERANCES			SCALE: FULL				
DEC. DIM. ±			MAXIMUM ALLOWABLE TOLERANCES HAVE BEEN DETERMINED AND ANY DEVIATIONS WILL BE CAUSE FOR REJECTION. REMOVE ALL BURRS AND SHARP EDGES				
FRAC. DIM. ± 1/64							
ANGULAR DIM. ±							

REQ. PER. UNIT	USED ON			MS-2409	B
	MODEL	ASS'Y. NO.	DATE		
1	CHG-1	OVEN	9-12-60		



A ~ $\frac{7}{64}$ DIA.
 B ~ $\frac{9}{32}$ DIA.

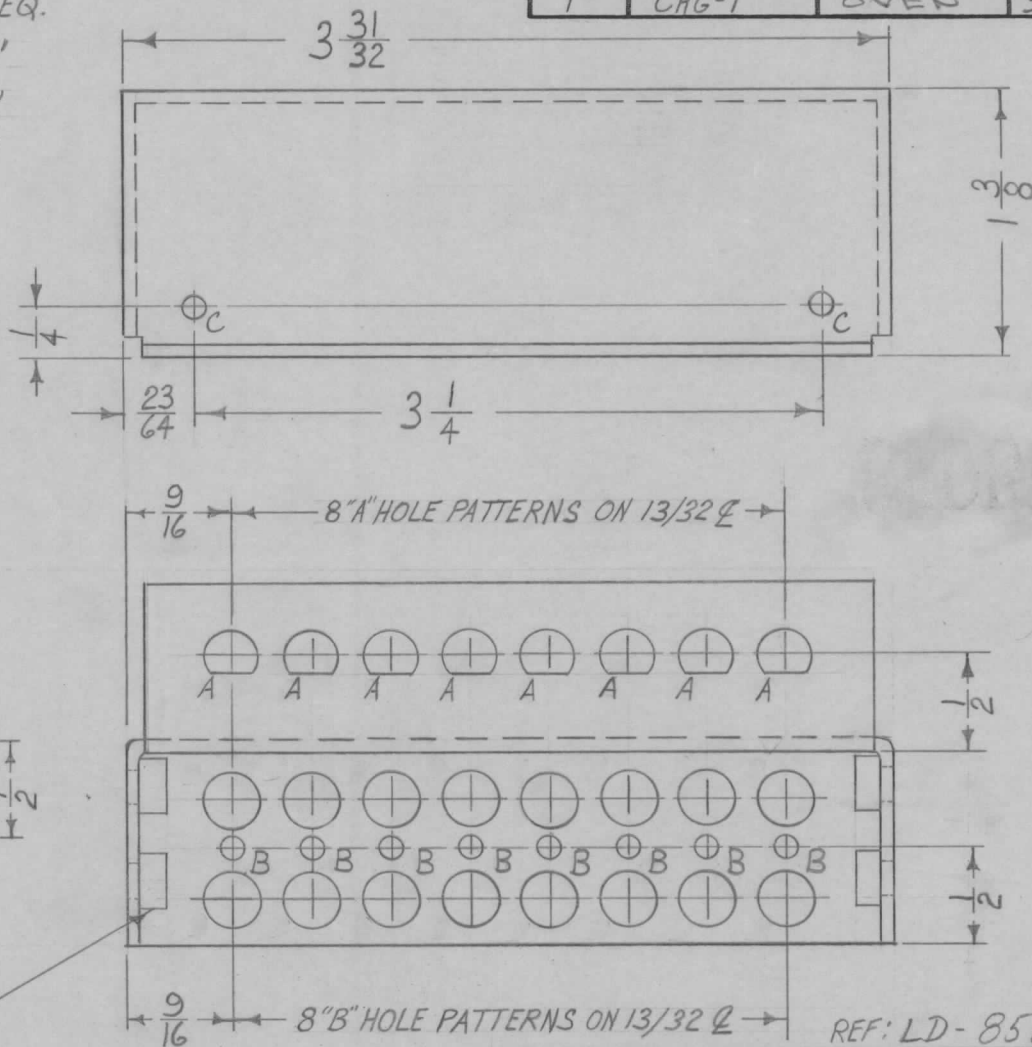
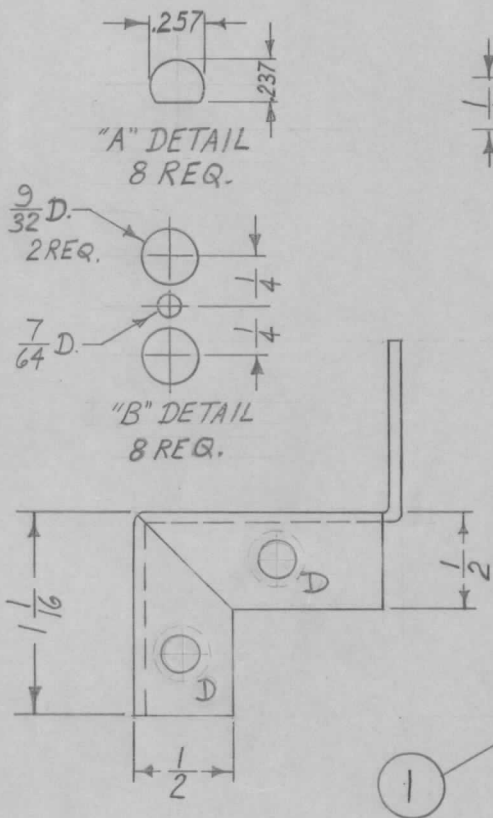
1 REQ.
 2 "



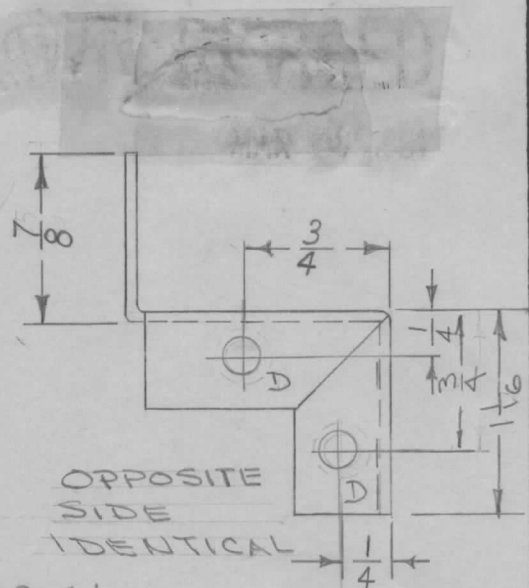
ISSUE	ITEM	CHANGED FROM	DATE	CH. NO.	DRAFTS	CHECKER	ENG. APP.	REQ. ITEM	PART NO.	DESCRIPTION	SYMBOL	
									.064	THE TECHNICAL MATERIEL CORP. MAMARONECK, NEW YORK	BRACKET, XTAL MOUNTING	
B	1	DWG changed back for CHG-1 Not compatible for CHG-2	6-3-61	5006	<i>JCB</i>	<i>JCB</i>	<i>JCB</i>		STOCK SIZE			
A	1	COMPLETELY REDRAWN & REVISED	3-7-61	A367	<i>JCB</i>	<i>JCB</i>	<i>JCB</i>		ALUMINUM			
TOLERANCES			SCALE: FULL			5052-H32				<i>JCB</i>	<i>JCB</i>	
DEC. DIM. ± FRAC. DIM. ± 1/64 ANGULAR DIM. ±			MAXIMUM ALLOWABLE TOLERANCES HAVE BEEN DETERMINED AND ANY DEVIATIONS WILL BE CAUSE FOR REJECTION. REMOVE ALL BURRS AND SHARP EDGES			TYPE & TEMPER HEATTREAT. SPEC.		DRAWN	CHECKED	FINAL APPROVAL		
						S404 YELL. IRIDITE				MS-2409 B		
						FINISH & SPEC. NO.		ELEC. DES. APP	MECH. DES. APP			

A- SEE DETAIL 8 REQ.
 B- SEE DETAIL 8."
 C- $\frac{7}{64}$ DIA. 2"
 D- .161-.164 DIA. 4"

FOR NT-129-440-4.



NOTE:
 USE MATERIAL THICKNESS
 FOR MAX. RADIUS ON ALL
 BENDS UNLESS OTHERWISE
 SPECIFIED.
 MOUNT NT'S AFTER
 FINISHING.



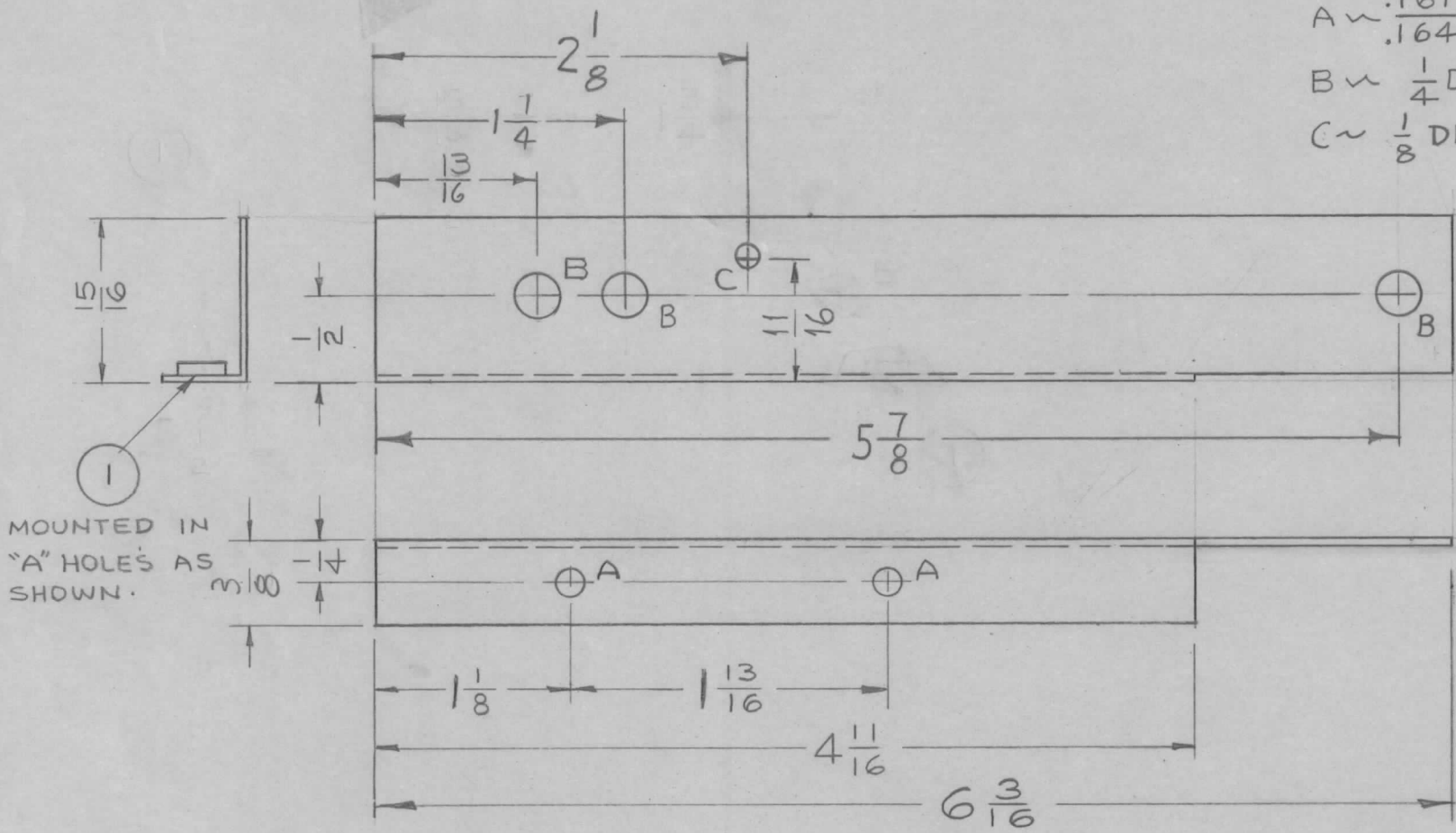
OPPOSITE
 SIDE
 IDENTICAL

REF: LD-858-(1)

REQ. PER. UNIT	MODEL	ASSY. NO.	DATE	USED ON			
1	CHG-1	OVEN	9-13-60	MS-2410 C			
4	1	NT-129-440-4	NUT, ROUND, SWAGE TYPE				
C	1	REINSTATED AS PER REV. A	6/1/61	4963	DM	JR	SD
B	1	OBSELETE RED RAON ON 852	3/8/61	4368	DM	JR	SD
A	1	7/8 DIM. WAS 15/16	10-31-60	3351	JR	JR	SD
ISSUE	ITEM	CHANGED FROM	DATE	CH. NO.	DRAFTS	CHECKER	ENG. APP.
TOLERANCES			SCALE: FULL				
DEC. DIM. ±			MAXIMUM ALLOWABLE TOLERANCES HAVE BEEN DETERMINED AND ANY DEVIATIONS WILL BE CAUSE FOR REJECTION. REMOVE ALL BURRS AND SHARP EDGES				
FRAC. DIM. ± 1/64							
ANGULAR DIM. ±							
.064		THE TECHNICAL MATERIEL CORP.					
STOCK SIZE		MAMARONECK, NEW YORK					
ALUMINUM		BRACKET, XTAL & TRIMMER					
MATERIAL		5052-H32					
TYPE & TEMPER		HEATTREAT. SPEC.		DRAWN		CHECKED	
S404 VELL. IRIDITE				S.D.		J.R.	
FINISH & SPEC. NO.		ELEC. DES. APP		MECH. DES. APP		FINAL APPROVAL	
						MS-2410 C	

REQ. PER UNIT	USED ON			MS-2417 C
	MODEL	ASS'Y. NO.	DATE	
1	CHG-1	OVEN/OSC	9-16-60	

A ~ .161 DIA. HOLE'S 2 REQ.
 B ~ 1/4 DIA. HOLE'S 3 REQ.
 C ~ 1/8 DIA. 1 REQ



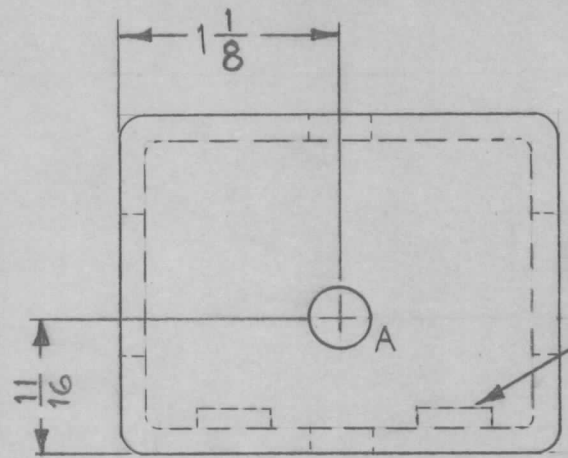
MOUNTED IN "A" HOLE'S AS SHOWN.

REF: LD-849 (1)

2		1		NT-129-440-4		NUT ROUND SWAGE TYPE			
REQ.	ITEM	PART NO.		DESCRIPTION		SYMBOL			
C	2	① 'C' Hole Added		11-22-60	3540	.051		THE TECHNICAL MATERIEL CORP. MAMARONECK, NEW YORK SHIELD, OSC CHASSIS	
	1	3/8 DIM WAS 1/2				STOCK SIZE			
B	1	DIM 13/16 WAS 15/16, 1/4 WAS 1/16		11-3-60	3378	ALUMINUM			
A	2	ONE "B" HOLE ADDED		10-12-60	3179	MATERIAL			
	1	ONE "B" HOLE RELOCATED				5052-H32			
ISSUE	ITEM	CHANGED FROM		DATE	CH. NO.	DRAFTS	CHECKER	ENG. APP.	
TOLERANCES				SCALE: FULL					
DEC. DIM. ±				MAXIMUM ALLOWABLE TOLERANCES HAVE BEEN DETERMINED AND ANY DEVIATIONS WILL BE CAUSE FOR REJECTION. REMOVE ALL BURRS AND SHARP EDGES					
FRAC. DIM. ± 1/64									
ANGULAR DIM. ±									
TYPE & TEMPER		HEAT TREAT. SPEC.		DRAWN		CHECKED		FINAL APPROVAL	
S-404 YELLOW IRDITE				cy		jwe		MS-2417 C	
FINISH & SPEC. NO.				ELEC. DES. APP		MECH. DES. APP			

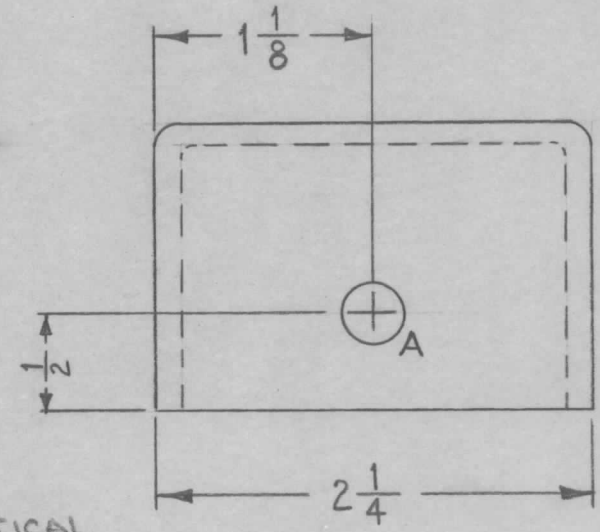
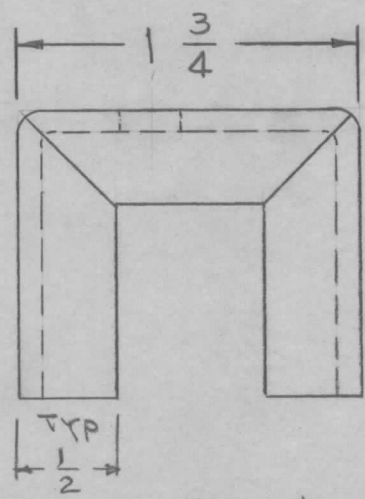
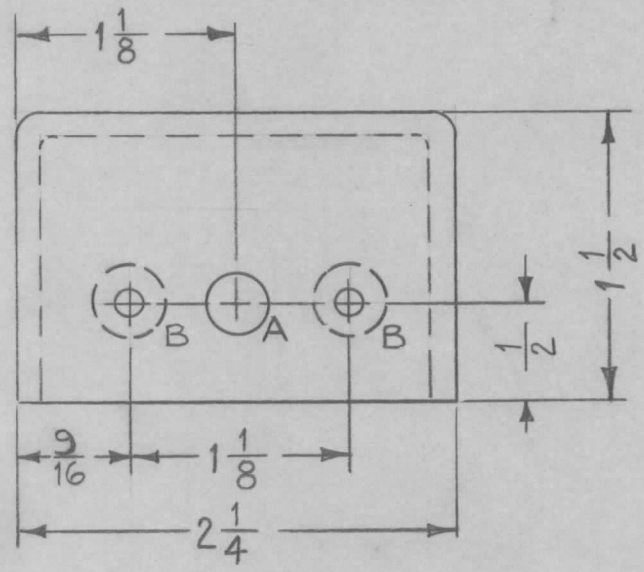
REQ. PER. UNIT	USED ON			MS-2422
	MODEL	ASS'Y. NO.	DATE	
2	ACU		4-17-61	

A ~ $\frac{5}{16}$ DIA. 3 REQ.
 B ~ .221-.224 DIA. 2 REQ.



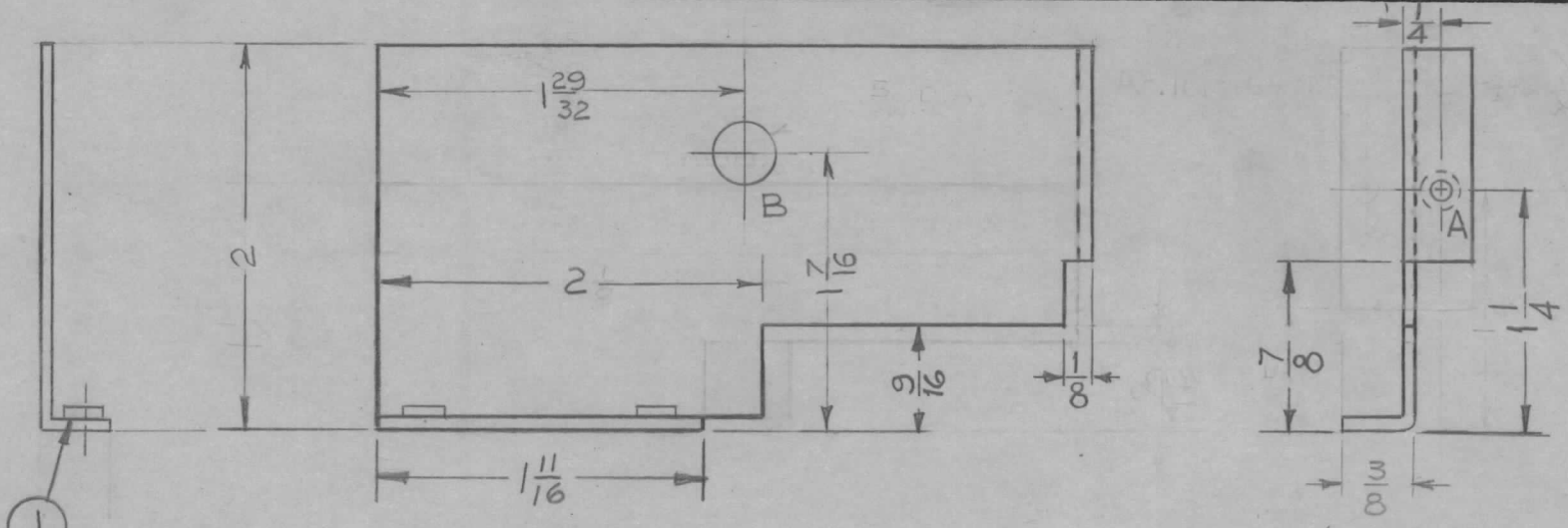
1 MOUNT ITEM 1 IN ALL "B" HOLES AS SHOWN AFTER FINISHING.

USE MATERIAL THICKNESS FOR MAX. RADIUS ON ALL BENDS UNLESS OTHERWISE SPECIFIED



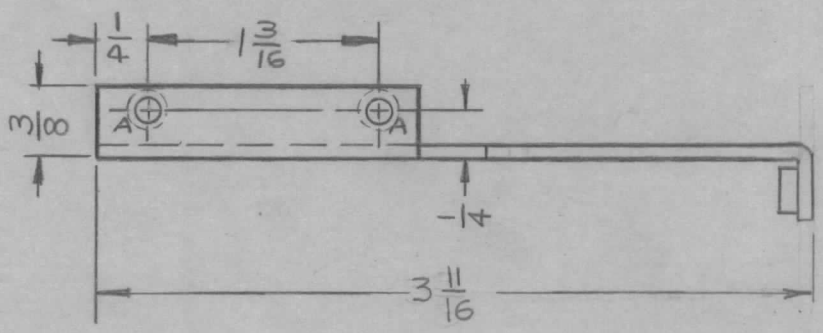
2	1	NT-129-832-4	NUT, ROUND, SWAGE TYPE		
REQ.	ITEM	PART NO.	DESCRIPTION		SYMBOL
		1/8	THE TECHNICAL MATERIEL CORP.		
		STOCK SIZE	MAMARONECK, NEW YORK		
		ALUMINUM	BRACKET, GEAR SWITCH		
		MATERIAL			
ISSUE	ITEM	CHANGED FROM	DATE	CH. NO.	DRAFTS
TOLERANCES		SCALE: FULL (DO NOT SCALE)			
DEC. DIM. ±		MAXIMUM ALLOWABLE TOLERANCES HAVE BEEN DETERMINED AND ANY DEVIATIONS WILL BE CAUSE FOR REJECTION.			
FRAC. DIM. ± 1/64		REMOVE ALL BURRS AND SHARP EDGES			
ANGULAR DIM. ±					
5052-H32		HEAT TREAT. SPEC.		DRAWN	CHECKED
S404 YELL. IRIDITE					
FINISH & SPEC. NO.		ELEC. DES. APP		MECH. DES. APP	
				MS-2422	

REQ. PER. UNIT	USED ON			MS-2435	D
	MODEL	ASS'Y. NO.	DATE		
1	CHG-1	RF/MF Section	9-22-60		



A- .161-164D. (FOR NT 129-440-4) 3 REQ
 B- 5/16 (.312) - 1 REQ

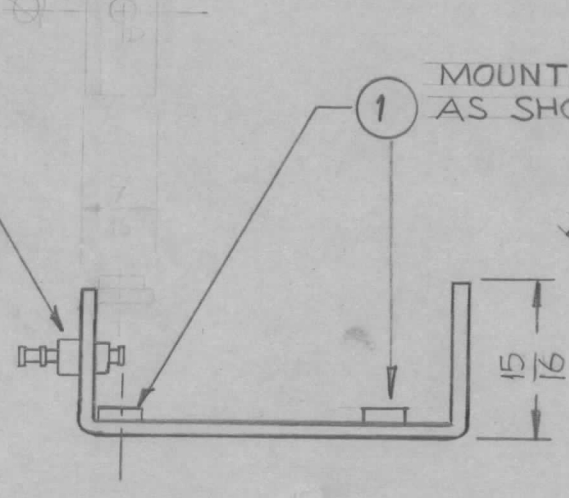
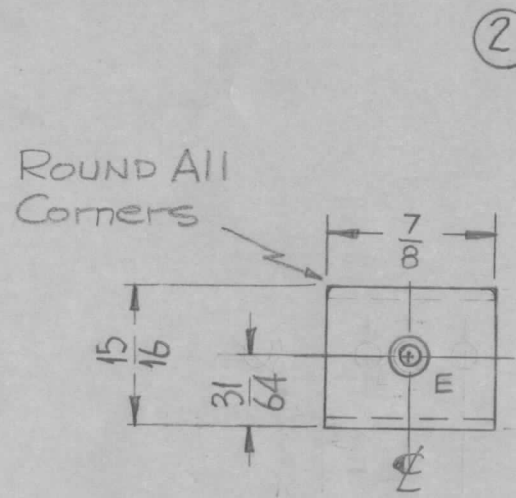
MOUNTED IN ALL "A" HOLES AFTER FINISHING



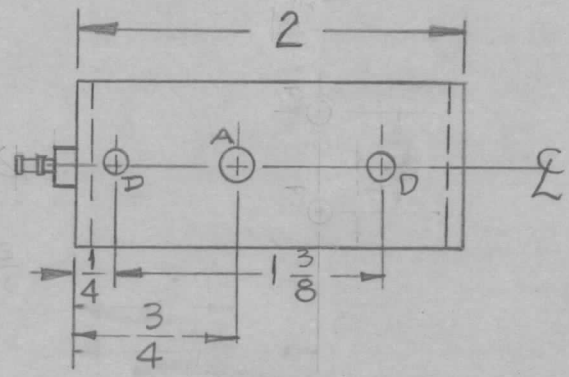
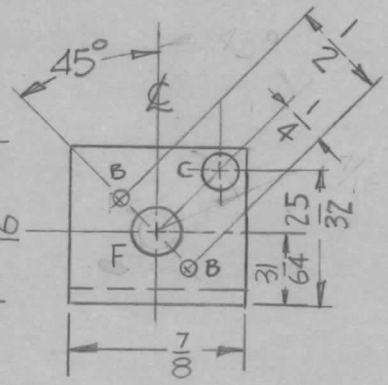
NOTE:
 USE MATERIAL THICKNESS FOR MAX. RADIUS ON ALL BENDS UNLESS OTHERWISE SPECIFIED.

D	1	7/8 X 1/8 NOTCH WAS 5/8	6-20-61	5083	WGF	JCS	JCS	3	1	NT-129-440-4	NUT, ROUND, SWAGE TYPE				
C	1	9/16 DIM. WAS 7/16	6-7-61	5033	WGF	JCS	JCS			.064	THE TECHNICAL MATERIEL CORP. MAMARONECK, NEW YORK SHIELD, RF				
B	2	CHANGED DIRECTION OF (1) LIP	4/26/61	4792	JPM	JCS	JCS			STOCK SIZE					
	1	ITEM (1) QUANTITY WAS (2)								ALUMINUM					
A	1	COMPLETE REDESIGN	9/7/60	3117	GD	JL	JL			MATERIAL					
ISSUE ITEM CHANGED FROM			DATE	CH. NO.	DRAFTS	CHECKER	ENG. APP.			5052-H32	Ruzzo	JL	JL		
TOLERANCES			SCALE: (DO NOT SCALE)								TYPE & TEMPER	CHECKED	FINAL APPROVAL		
DEC. DIM. ±			MAXIMUM ALLOWABLE TOLERANCES HAVE BEEN DETERMINED AND ANY DEVIATIONS WILL BE CAUSE FOR REJECTION. REMOVE ALL BURRS AND SHARP EDGES								5404 YELL. IRIDITE		MS-2435	D	
FRAC. DIM. ± 1/64															FINISH & SPEC. NO.
ANGULAR DIM. ±															

REQ. PER UNIT	USED ON			MS-2436 D
	MODEL	ASS'Y. NO.	DATE	
1	CHG-1	RF/SECTION #4	9-22-60	



MOUNTED IN ALL "D" HOLES AS SHOWN



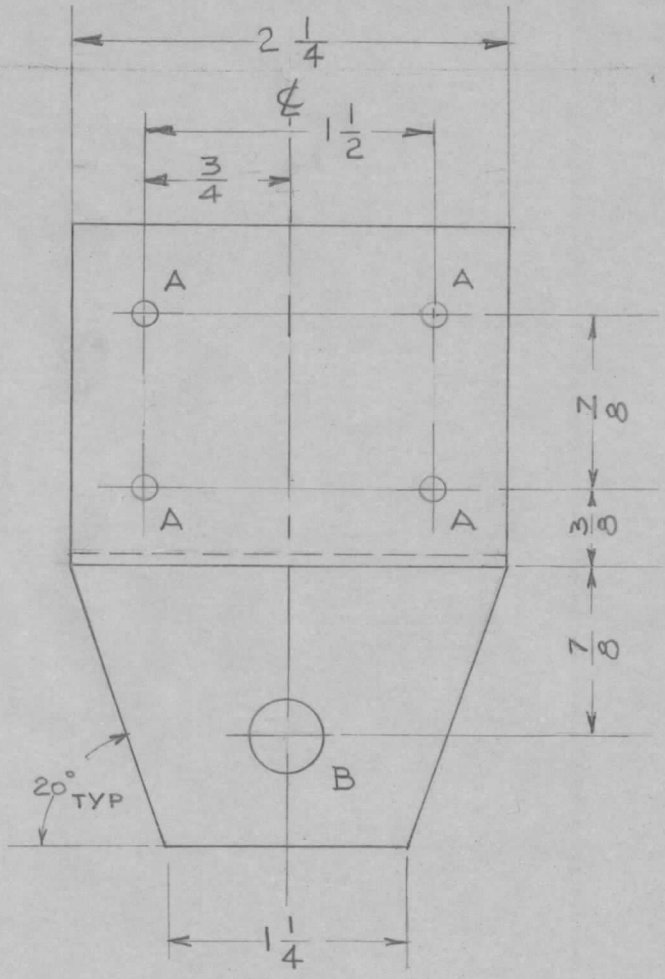
- A - Dr. & C'sink for 4-40 FHS. - 1 Req.
- B - 3/32 DIA. 2 Req.
- C - 3/16 DIA. 1 Req.
- D - .161-.164 D. (FOR NT 129-440-4) 2 Req.
- E - .156 DIA (for Item 2) 1 Req.
- F - 1/4 DIA. 1 Req.

D	1	2" DIM. WAS 1.5/16	6-19-61	5074	WAF	JCS	
C	1	25/32 DIM. WAS 27/32	12-2-60	3659	WAF	JCS	
B	1	COMPLETELY REDESIGNED	11-21-60	3512	DXM	JCS	
A	2	① F' Hole Added	10-6-60	3147	J.C.B.		
	1	① E' Hole Deleted					

1	2	TE-169-1	TERMINAL, FEED THRU	E
2	1	NT-129-440-4	NUT, ROUND, SWAGE TYPE	D
REQ. ITEM	PART NO.		DESCRIPTION	SYMBOL
	.064		THE TECHNICAL MATERIEL CORP. MAMARONECK, NEW YORK	
	STOCK SIZE			
	ALUMINUM		MTG. BRACKET	
	MATERIAL		BAL. MODULATOR	
	5052-H32		R-0220	JCS
	TYPE & TEMPER	HEATTREAT. SPEC.	DRAWN	CHECKED
	S404 YELL. IRIDITE			
	FINISH & SPEC. NO.	ELEC. DES. APP	MECH. DES. APP	
				MS-2436 D

TOLERANCES		SCALE: (DO NOT SCALE)
DEC. DIM. ±	MAXIMUM ALLOWABLE TOLERANCES HAVE BEEN DETERMINED AND ANY DEVIATIONS WILL BE CAUSE FOR REJECTION.	
FRAC. DIM. ± 1/64	REMOVE ALL BURRS AND SHARP EDGES	
ANGULAR DIM. ±		

REQ. PER. UNIT	USED ON			MS-2441
	MODEL	ASS'Y. NO.	DATE	
1	ACU		9-29-60	



A - $\frac{1}{8}$ DIA 4 REQ
 B - $\frac{3}{8}$ DIA. 1 REQ

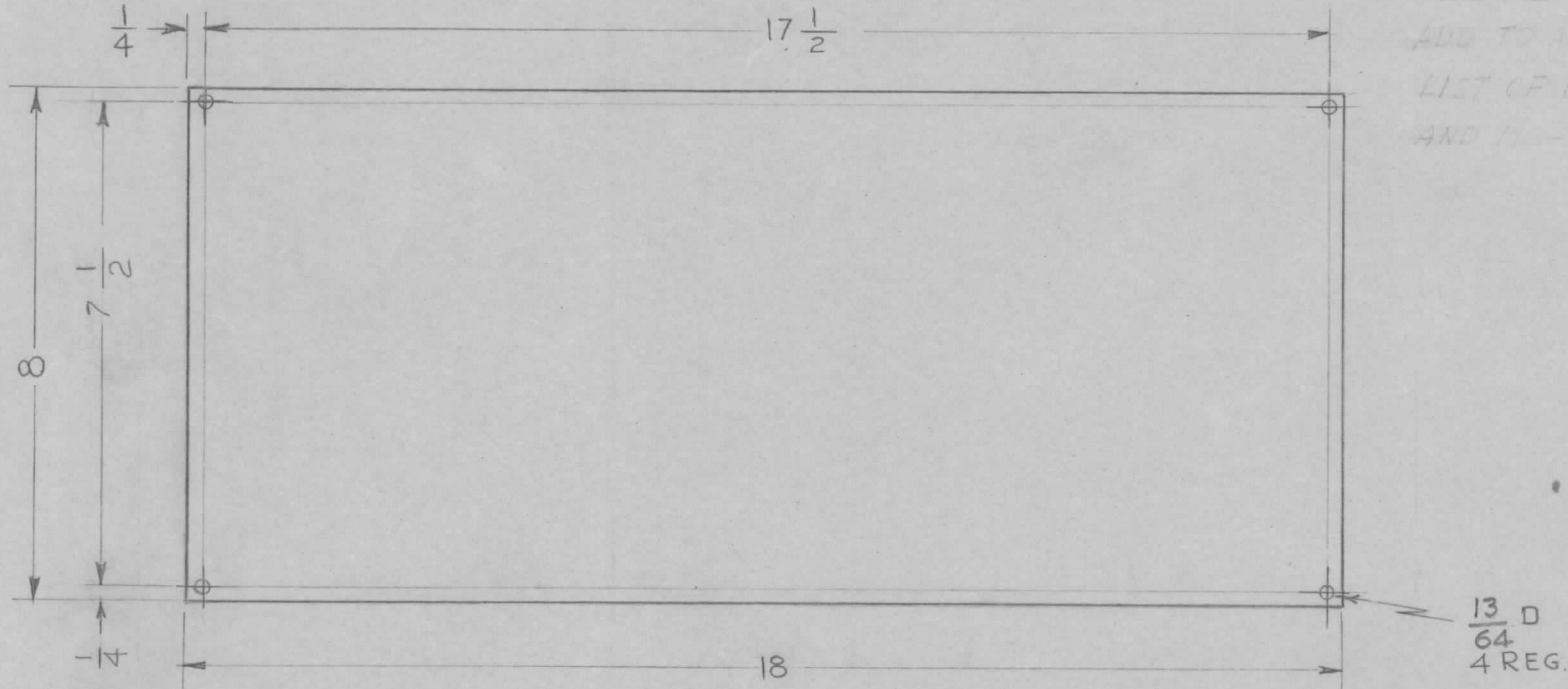
REF. (1) LD-901

ISSUE	ITEM	CHANGED FROM	DATE	CH. NO.	DRAFTS	CHECKER	ENG. APP.	REQ.	ITEM	PART NO.	DESCRIPTION	SYMBOL
										.064	THE TECHNICAL MATERIEL CORP. MAMARONECK, NEW YORK BRACKET, FILTER MOUNTING	
										STOCK SIZE		
										ALUMINUM		
										MATERIAL		
										5052-H32	<i>G. DeLuna</i> DRAWN CHECKED FINAL APPROVAL	
										TYPE & TEMPER	HEAT TREAT. SPEC.	
										S 404-IRIDITE		MS-2441
										FINISH & SPEC. NO.	ELEC. DES. APP	MECH. DES. APP

TOLERANCES
 DEC. DIM. \pm
 FRAC. DIM. \pm 1/64
 ANGULAR DIM. \pm

SCALE:
 MAXIMUM ALLOWABLE TOLERANCES HAVE BEEN DETERMINED AND ANY DEVIATIONS WILL BE CAUSE FOR REJECTION.
 REMOVE ALL BURRS AND SHARP EDGES

REQ. PER. UNIT	USED ON			MS-2442	A
	MODEL	ASS'Y. NO.	DATE		
1	GPT-40K	AK-214	10-6-1960		



NOTE:
ADD TO ASSEMBLIES
LIST OF ION-44-217
AND 11-2388

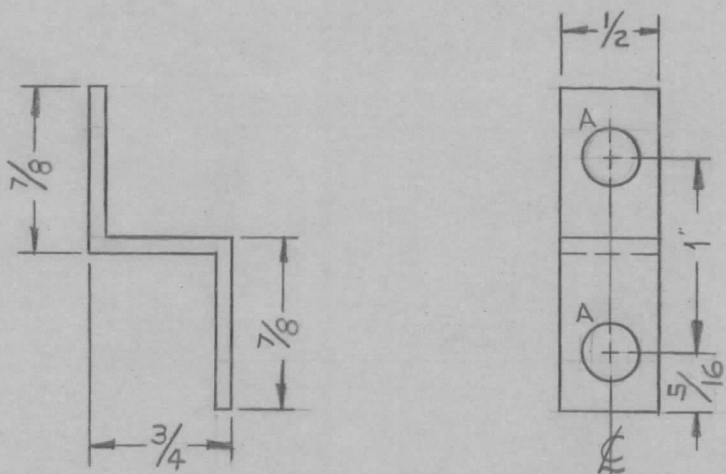
REF: MS-1699

REQ.	ITEM	PART NO.	DESCRIPTION			SYMBOL	
		11 GA.	THE TECHNICAL MATERIEL CORP.				
		STOCK SIZE	MAMARONECK, NEW YORK				
A	1	STEEL	ADAPTER, COVER				
		MATERIAL	BOWL OPENING				
ISSUE	ITEM	CHANGED FROM	DATE	CH. NO.	DRAFTS	CHECKER	ENG. APP.
		NOTE ADDED 13/64 D. WAS 11/64 D.	6-27-61	5141	G.D.L.	RU	LB
TOLERANCES			SCALE: <i>H</i>				
DEC. DIM. ±			MAXIMUM ALLOWABLE TOLERANCES HAVE BEEN DETERMINED AND ANY DEVIATIONS WILL BE CAUSE FOR REJECTION.				
FRAC. DIM. ± 1/64			REMOVE ALL BURRS AND SHARP EDGES				
ANGULAR DIM. ±			TYPE & TEMPER	HEAT TREAT. SPEC.	DRAWN	CHECKED	FINAL APPROVAL
			S-220	RCAF BLUE			
			FINISH & SPEC. NO.	ELEC. DES. APP	MECH. DES. APP	MS-2442 A	

REQ. PER. UNIT	USED ON			MS-2444	B
	MODEL	ASSY. NO.	DATE		
1	40K	AX-275	10-8-60		

A- $\frac{9}{32}$ DIA. - 1 REQ - 2 REQ

B- $\frac{1}{4} \times \frac{1}{32}$ SLOT - 1 REQ



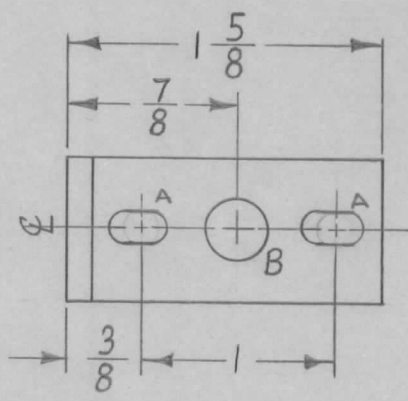
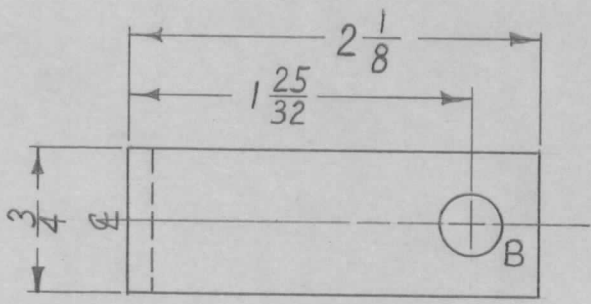
FINISH

S 245 SILVER PLATE.0003 THK

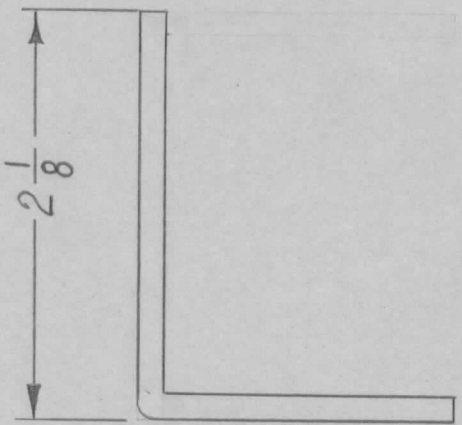
S 423 SILVER KOTE IRIDITE

REQ.	ITEM	PART NO.	DESCRIPTION				SYMBOL
		$\frac{1}{16}$	THE TECHNICAL MATERIEL CORP.				
		STOCK SIZE	MAMARONECK, NEW YORK				
B	1	B SLOT CHANGED TO A HOLE FINISH NOTE ADDED.	8-22-62	7101	SG	<i>file</i>	<i>MB</i>
A	1	STOCK SIZE WAS .084	10/14/60	3181	<i>ed</i>	<i>file</i>	<i>MB</i>
ISSUE	ITEM	CHANGED FROM	DATE	CH. NO.	DRAFTS	CHECKER	ENG. APP.
TOLERANCES			SCALE: FULL				
DEC. DIM. \pm			MAXIMUM ALLOWABLE TOLERANCES HAVE BEEN DETERMINED AND ANY DEVIATIONS WILL BE CAUSE FOR REJECTION. REMOVE ALL BURRS AND SHARP EDGES				
FRAC. DIM. $\pm \frac{1}{64}$							
ANGULAR DIM. \pm							
TYPE & TEMPER		HEAT TREAT. SPEC.	DRAWN		CHECKED	FINAL APPROVAL	
SEE NOTE			<i>Ruzzo</i>		<i>file</i>	<i>AMB</i>	
FINISH & SPEC. NO.		ELEC. DES. APP	MECH. DES. APP		MS-2444 B		

REQ. PER UNIT	USED ON			MS-2449	A
	MODEL	ASS'Y. NO.	DATE		
1	CHG-1	MF/RF SEC.	10-15-60		



A ~ $\frac{11}{64} \times \frac{11}{32}$ SLOT 2 REQ.
 B ~ $\frac{5}{16}$ DIA. 2 REQ.

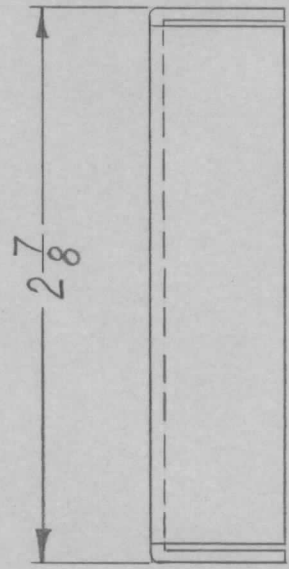
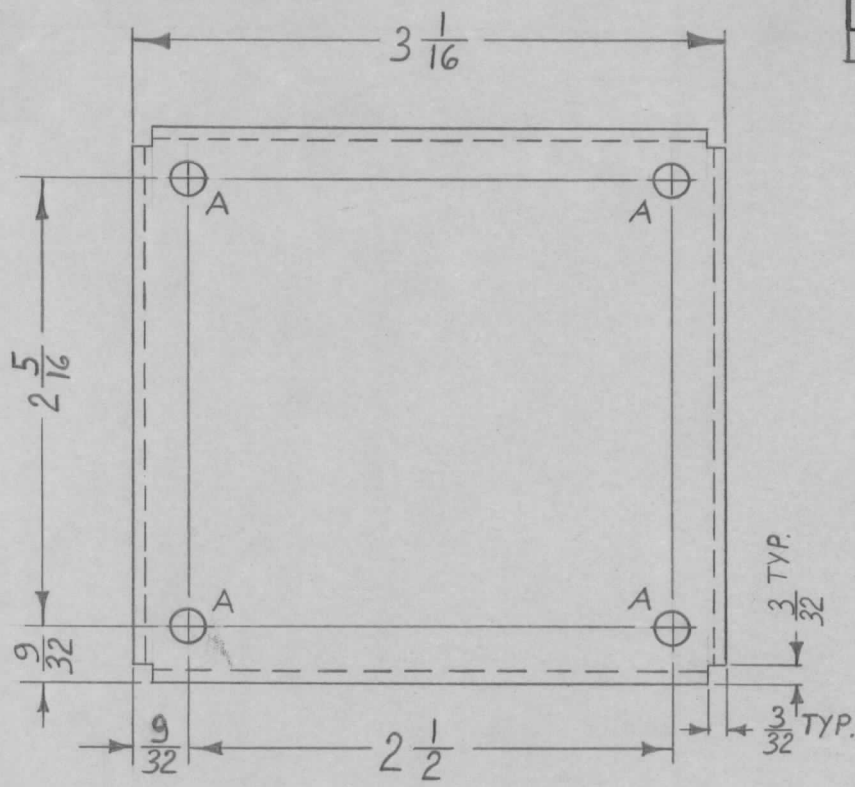


NOTE:
 USE MATERIAL THICKNESS FOR MAX. RADIUS ON BEND, UNLESS OTHERWISE SPECIFIED.

				REQ. ITEM	PART NO.		DESCRIPTION			SYMBOL
					1/8		THE TECHNICAL MATERIEL CORP.			
					STOCK SIZE		MAMARONECK, NEW YORK			
					ALUMINUM		SHAFT SUPPORT BRACKET			
					MATERIAL					
					5052-H32					
					TYPE & TEMPER		DRAWN			
					S404 YELL. IRIDITE		CHECKED			
					FINISH & SPEC. NO.		FINAL APPROVAL			
							MS-2449			A
							ELEC. DES. APP			
							MECH. DES. APP			
TOLERANCES				SCALE: FULL						
DEC. DIM. ±				MAXIMUM ALLOWABLE TOLERANCES HAVE BEEN DETERMINED AND ANY DEVIATIONS WILL BE CAUSE FOR REJECTION.						
FRAC. DIM. ± 1/64				REMOVE ALL BURRS AND SHARP EDGES						
ANGULAR DIM. ±										
A	1	"A" Slots were $\frac{11}{64}$ D. HOLES	11-23-60	3540	RU	JCS				
ISSUE	ITEM	CHANGED FROM	DATE	CH. NO.	DRAFTS	CHECKER	ENG. APP.			

REQ. PER. UNIT	USED ON		
	MODEL	ASS'Y. NO.	DATE
1	CHG-1	MF/RF SEC.	10-15-60
1	CHG-2	MF/RF	5-24-61

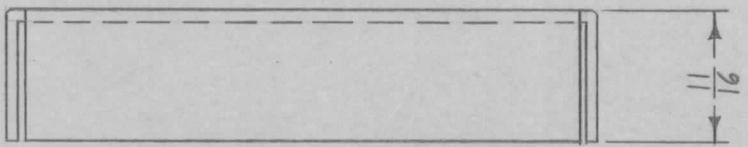
MS-2450



A ~ 11/64 DIA.

4 REQ.

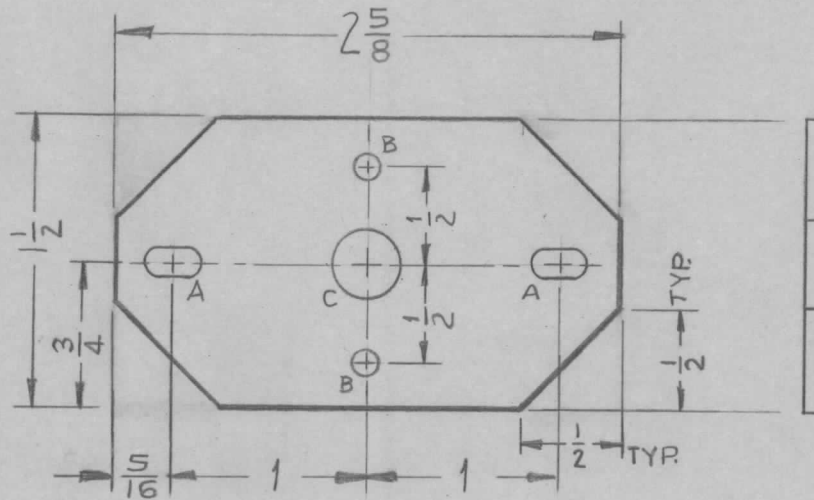
NOTE:
USE MATERIAL THICKNESS FOR MAX. RADIUS ON ALL BENDS UNLESS OTHER WISE SPECIFIED.



REF: LD-935(1) FOR CHG-2 ONLY
LD-868(1) FOR CHG-1 ONLY

ISSUE	ITEM	CHANGED FROM	DATE	CH. NO.	DRAFTS	CHECKER	ENG. APP.	REQ.	ITEM	PART NO.	DESCRIPTION	SYMBOL				
										.051	THE TECHNICAL MATERIEL CORP. MAMARONECK, NEW YORK COVER, REAR (COIL ASS'Y)					
										STOCK SIZE						
										ALUMINUM						
										MATERIAL						
TOLERANCES			SCALE: FULL					5052-H32								
DEC. DIM. ±			MAXIMUM ALLOWABLE TOLERANCES HAVE BEEN DETERMINED AND ANY DEVIATIONS WILL BE CAUSE FOR REJECTION. REMOVE ALL BURRS AND SHARP EDGES					TYPE & TEMPER	HEAT TREAT. SPEC.	DRAWN	CHECKED	FINAL APPROVAL				
FRAC. DIM. ± 1/64								S404 YELL. IRIDITE								
ANGULAR DIM. ±								FINISH & SPEC. NO.	ELEC. DES. APP	MECH. DES. APP						
												MS-2450				

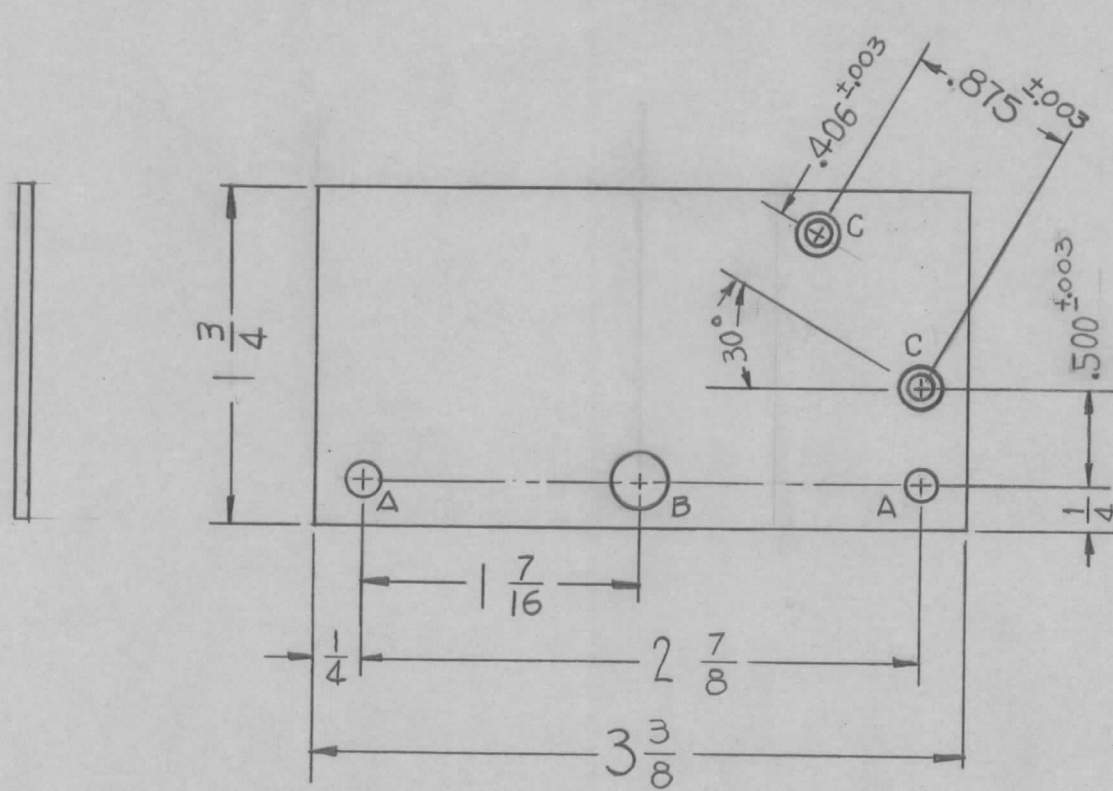
REQ. PER. UNIT	USED ON			MS-2451	C
	MODEL	ASS'Y. NO.	DATE		
1	CHG-1	#2 RF SECTION	10-15-60		



	REQ
A - 11/64 x 11/32 SLOT	~ 2
B - 5/32 DIA.	2
C - 1/2 DIA.	1

ISSUE	ITEM	CHANGED FROM	DATE	CH. NO.	DRAFTS	CHECKER	ENG. APP.	REQ. ITEM	PART NO.	DESCRIPTION	SYMBOL								
C	1	"A" HOLE WAS 1/8 x 5/16	9-23-63	10,004	G.D.L.	NY	[Signature]			THE TECHNICAL MATERIEL CORP. MAMARONECK, NEW YORK SWITCH BRACKET	C								
B	3	(C) Hole was 3/8 DIA.						.064											
	2	(A) Slots were 5/32 x 5/16	2-24-61	4233	RU	[Signature]		STOCK SIZE											
	1	(2) Notches Added (TOP)						ALUMINUM											
A	1	(2) 1/2 x 1/2 NOTCHS Added	11-23-60	3540	RU	[Signature]													
TOLERANCES			SCALE: FULL (DO NOT SCALE)					5052-H32		[Signature]	[Signature]	[Signature]							
DEC. DIM. ±			MAXIMUM ALLOWABLE TOLERANCES HAVE BEEN DETERMINED AND ANY DEVIATIONS WILL BE CAUSE FOR REJECTION. REMOVE ALL BURRS AND SHARP EDGES					TYPE & TEMPER		DRAWN		CHECKED		FINAL APPROVAL					
FRAC. DIM. ± 1/64								5404 YELL. IRIDITE								MS-2451		C	
ANGULAR DIM. ±								FINISH & SPEC. NO.		ELEC. DES. APP		MECH. DES. APP							

REQ. PER. UNIT	USED ON			MS-2454	A
	MODEL	ASS'Y. NO.	DATE		
2	ACU		4-24-61		

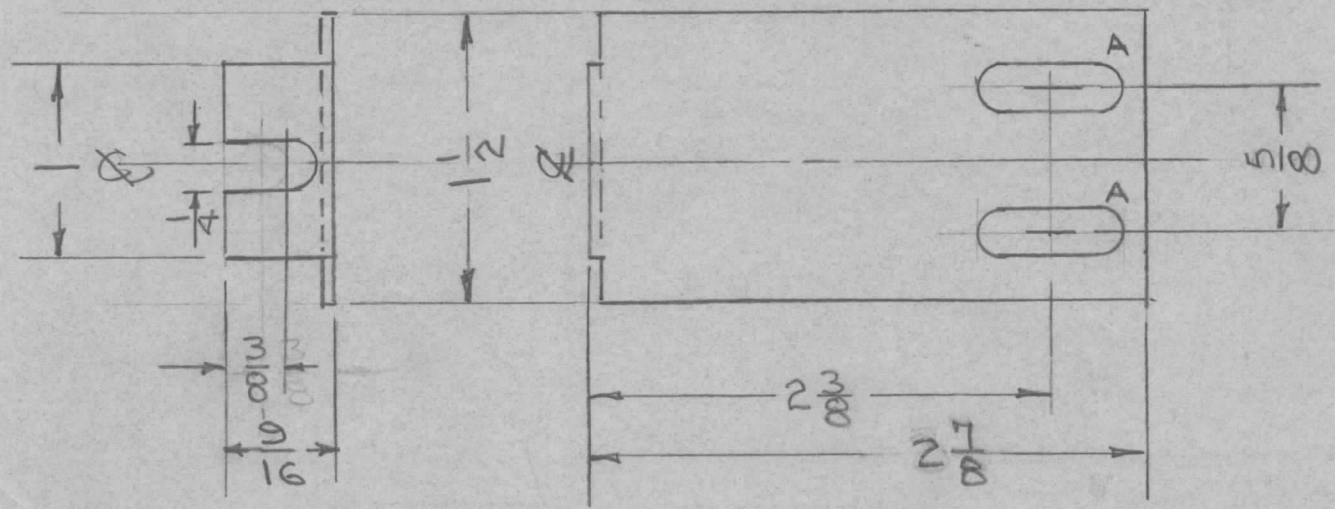


A - $\frac{3}{16}$ D. — 2 REQ
 B - $\frac{5}{16}$ D. — 1 REQ.
 C - DR & C'SINK
 FOR 4-40 FHS - 2 REQ

ISSUE	ITEM	CHANGED FROM	DATE	CH. NO.	DRAFTS	CHECKER	ENG. APP.	REQ. ITEM	PART NO.	DESCRIPTION	SYMBOL				
									.081	THE TECHNICAL MATERIEL CORP.					
									STOCK SIZE	MAMARONECK, NEW YORK					
A	1	Redrawn & Redesigned	4-24-61	~	RU	<i>[Signature]</i>	<i>[Signature]</i>		ALUMINUM	PLATE, DETENT MTG					
									MATERIAL						
TOLERANCES			SCALE: Do Not Scale					5052-H32		UZZO	<i>[Signature]</i>	<i>[Signature]</i>			
DEC. DIM. ±			MAXIMUM ALLOWABLE TOLERANCES HAVE BEEN DETERMINED AND ANY DEVIATIONS WILL BE CAUSE FOR REJECTION. REMOVE ALL BURRS AND SHARP EDGES					TYPE & TEMPER	HEATTREAT. SPEC.	DRAWN	CHECKED	FINAL APPROVAL			
FRAC. DIM. ± $\frac{1}{64}$															
ANGULAR DIM. ± $\frac{1}{2}^\circ$															
								5404 IRIDITE							
								FINISH & SPEC. NO.		ELEC. DES. APP	MECH. DES. APP	MS-2454 A			

REQ. PER UNIT	USED ON			MS-2457 A
	MODEL	ASS'Y. NO.	DATE	
8	GPT-10K		10-21-60	

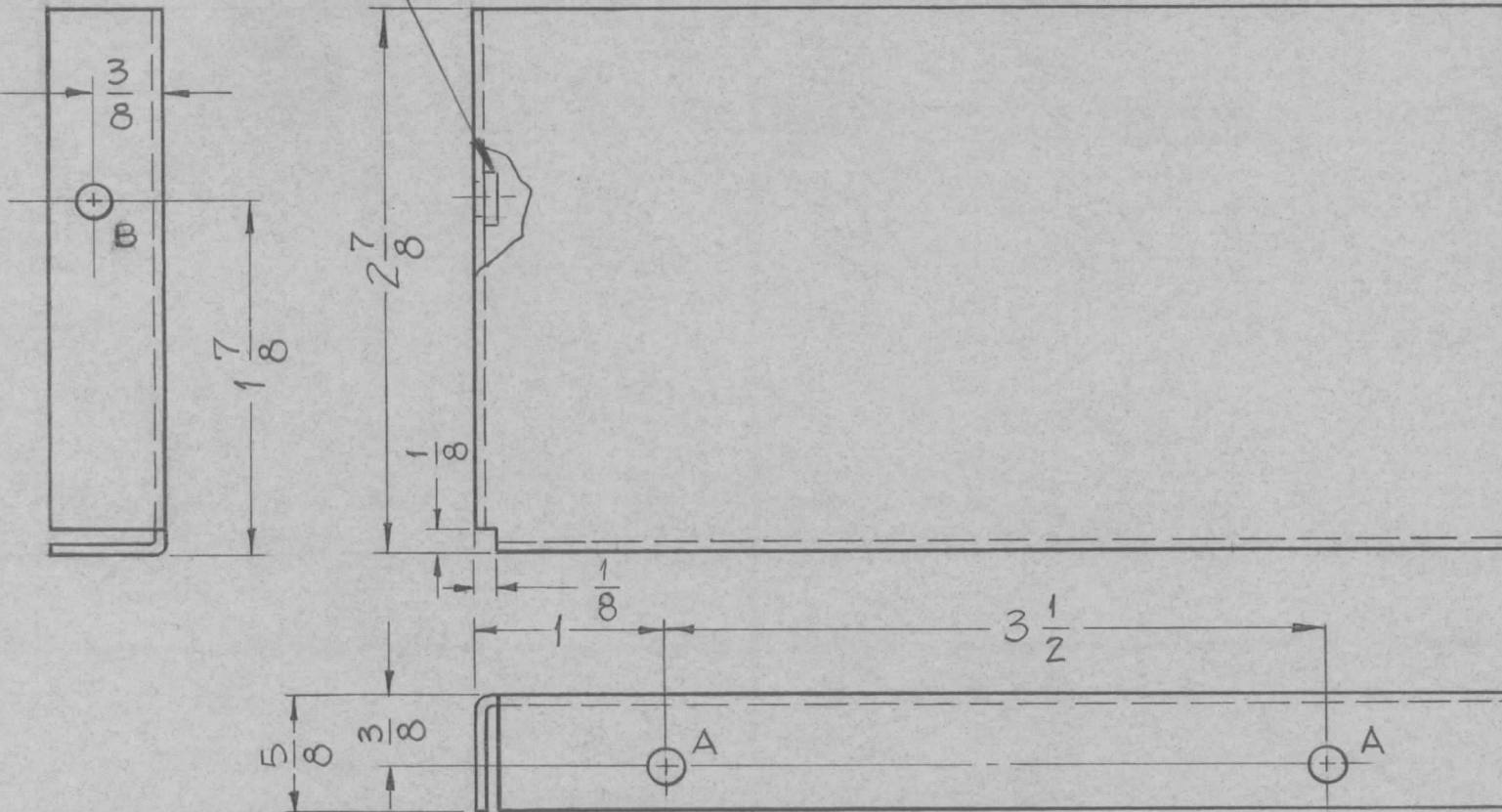
A- 1/4 X 3/4 SLOTS - 2 REQ



REF: TK-105, TK-108, TK-105

ISSUE	ITEM	CHANGED FROM	DATE	CH. NO.	DRAFTS	CHECKER	ENG. APP.	REQ. ITEM	PART NO.	DESCRIPTION	SYMBOL				
								062		THE TECHNICAL MATERIEL CORP.					
								STEEL		MAMARONECK, NEW YORK					
								MILD		ADAPTER BRKT., REAR					
								CADMIUM PLATE & YELL. IRIDITE		1 3/4 SLIDE					
A	1	DIM 5/8 was 3/4	11/16/60	3489	DPM	file	file								
TOLERANCES			SCALE: #												
DEC. DIM. ±			MAXIMUM ALLOWABLE TOLERANCES HAVE BEEN DETERMINED AND ANY DEVIATIONS WILL BE CAUSE FOR REJECTION. REMOVE ALL BURRS AND SHARP EDGES												
FRAC. DIM. ± 1/64															
ANGULAR DIM. ±															
								FINISH & SPEC. NO.		ELEC. DES. APP	MECH. DES. APP	MS-2457 A			

MOUNT IN "B" HOLE
AS SHOWN
AFTER FINISH



REQ. PER UNIT	USED ON		
	MODEL	ASS'Y. NO.	DATE
1	CHG-1		10-21-60

MS-2459 A

HOLES ~
A ~ 3/16 2 Req
B ~ 191-194 1 Req
(FOR NT-129-632-3)

								1	1	NT-129-632-3	NUT ROUND, SWAGE TYPE	B
								REQ.	ITEM	PART NO.	DESCRIPTION	SYMBOL
										.051 THICK	THE TECHNICAL MATERIEL CORP. MAMARONECK, NEW YORK	SHIELD, SYNTHESIZER
										STOCK SIZE		
										ALUMINUM		
										MATERIAL		
										5052-H32	J.C. Biele	<i>[Signature]</i>
										TYPE & TEMPER	CHECKED	FINAL APPROVAL
										5404-IRIDITE	<i>[Signature]</i>	MS-2459 A
										FINISH & SPEC. NO.	ELEC. DES. APP	MECH. DES. APP

A 2 DIM 5 7/16 WAS 5 1/2
1 B" Hole WAS AN "A" Hole

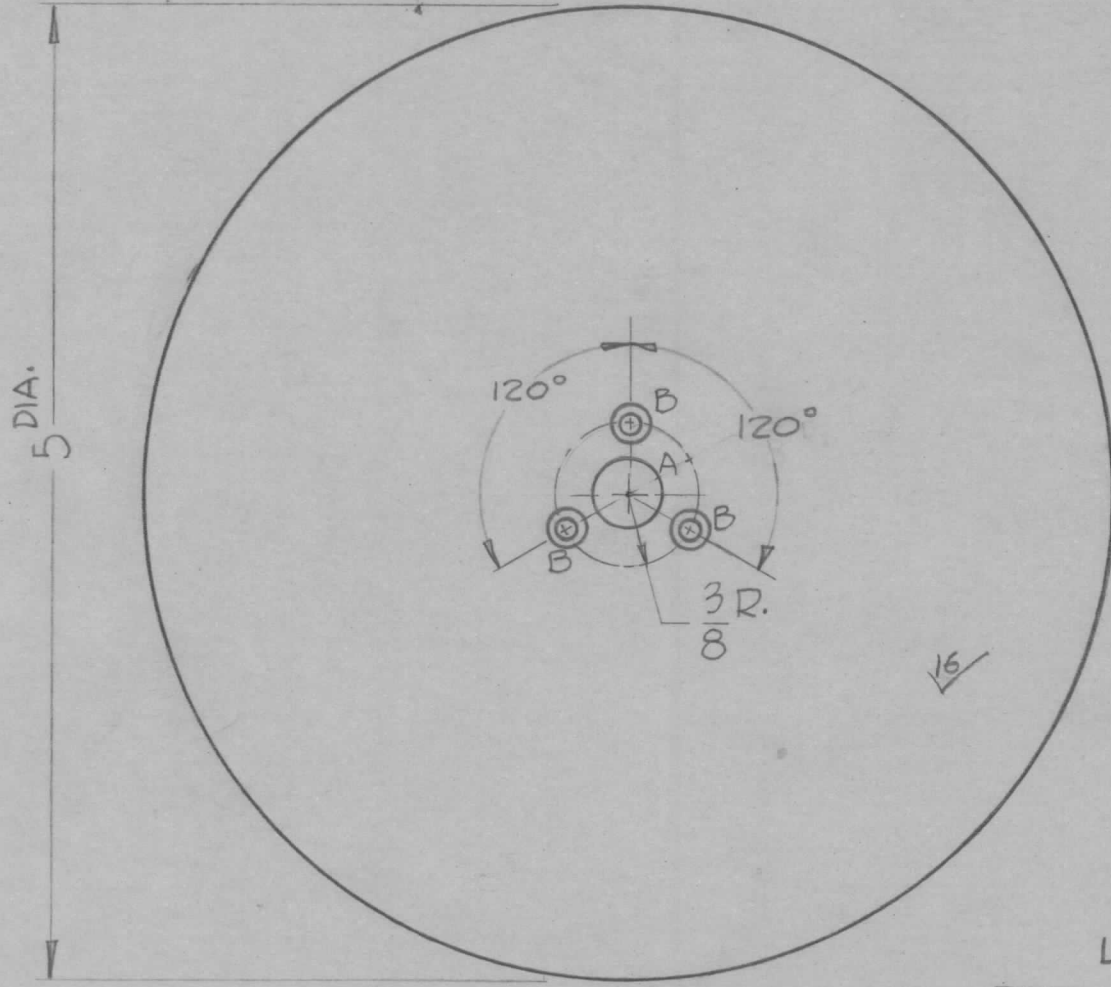
11-23-60 3540 *[Signature]*

ISSUE ITEM CHANGED FROM DATE CH. NO. DRAFTS CHECKER ENG. APP.

TOLERANCES
DEC. DIM. ±
FRAC. DIM. ± 1/64
ANGULAR DIM. ±

SCALE: FULL, Do Not SCALE
MAXIMUM ALLOWABLE TOLERANCES HAVE BEEN DETERMINED AND ANY DEVIATIONS WILL BE CAUSE FOR REJECTION. REMOVE ALL BURRS AND SHARP EDGES

REQ. PER. UNIT	USED ON			MS-2460	B
	MODEL	ASS'Y. NO.	DATE		
1	CHG-1		11-21-60		
1	CHG-2		7-18-61		



HOLES REQ'D
 A ~ .375^{+0.005}/_{0.000} D. (CENTER HOLE) 1
 B ~ Dr. & C'SINK for 6-32 F.H.S. 3

NOTE ~ 16 = ASA FINISH SYMBOL

NOTICE TO PERSONS RECEIVING THIS DRAWING

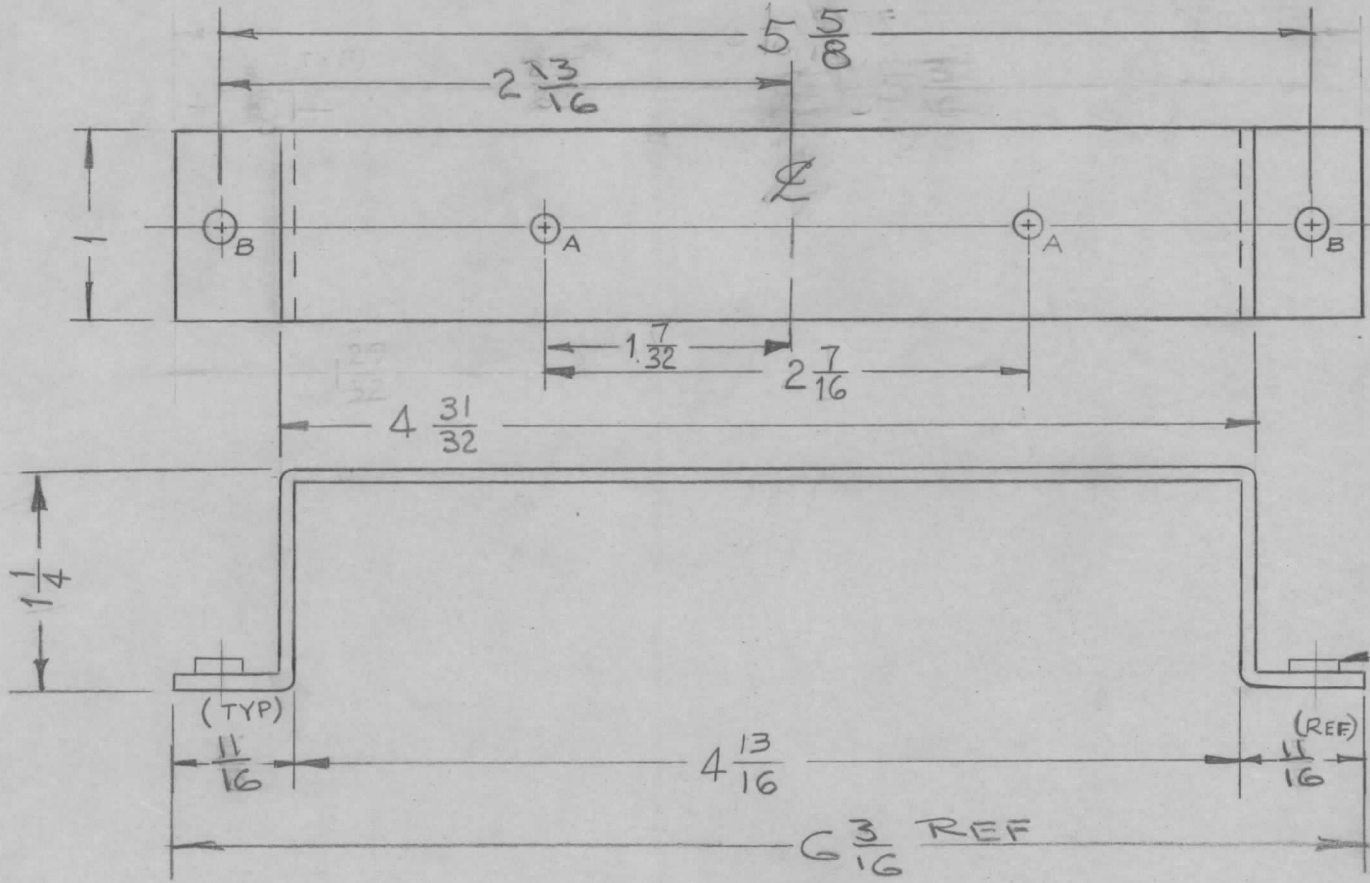
THE TECHNICAL MATERIEL CORPORATION claims proprietary right in the material disclosed hereon. This drawing is issued in confidence for engineering information only and may not be reproduced or used to manufacture anything shown hereon without permission from THE TECHNICAL MATERIEL CORPORATION to the user. This drawing is loaned for mutual assistance and is subject to recall at any time.

Property of:

THE TECHNICAL MATERIEL CORPORATION
 MAMARONECK, NEW YORK
 LD-946 (FOR CHG-2 ONLY)
 REF. LD856 (FOR CHG-1 ONLY)

REQ.	ITEM	PART NO.	DESCRIPTION				SYMBOL
B	1	CHG-2 Ref. added	7-18-61	-	QCS WAF	1/8"	THE TECHNICAL MATERIEL CORP. MAMARONECK, NEW YORK BANDSWITCH, DIAL PLATE
A	3	ADDED REF-LD-856	12/8/60	3689	QCS	ALUMINUM	
	2	ADDED FINISH NOTE					
	1	CHANGE TYPE TEMPER					
ISSUE	ITEM	CHANGED FROM	DATE	CH. NO.	DRAFTS	CHECKER	ENG. APP.
TOLERANCES			SCALE:				
DEC. DIM. ±			MAXIMUM ALLOWABLE TOLERANCES HAVE BEEN DETERMINED AND ANY DEVIATIONS WILL BE CAUSE FOR REJECTION.				
FRAC. DIM. ±			REMOVE ALL BURRS AND SHARP EDGES				
ANGULAR DIM. ± 1/2°							
		2024-T4			QCS	File	MS-2460 B
		TYPE & TEMPER	HEATTREAT. SPEC.		DRAWN		CHECKED
		5404 Yellow Iridite					
		FINISH & SPEC. NO.	ELEC. DES. APP		MECH. DES. APP		

REQ. PER UNIT	USED ON			MS-2462	B
	MODEL	ASS'Y. NO.	DATE		
1	TIS-3		10-24-60		



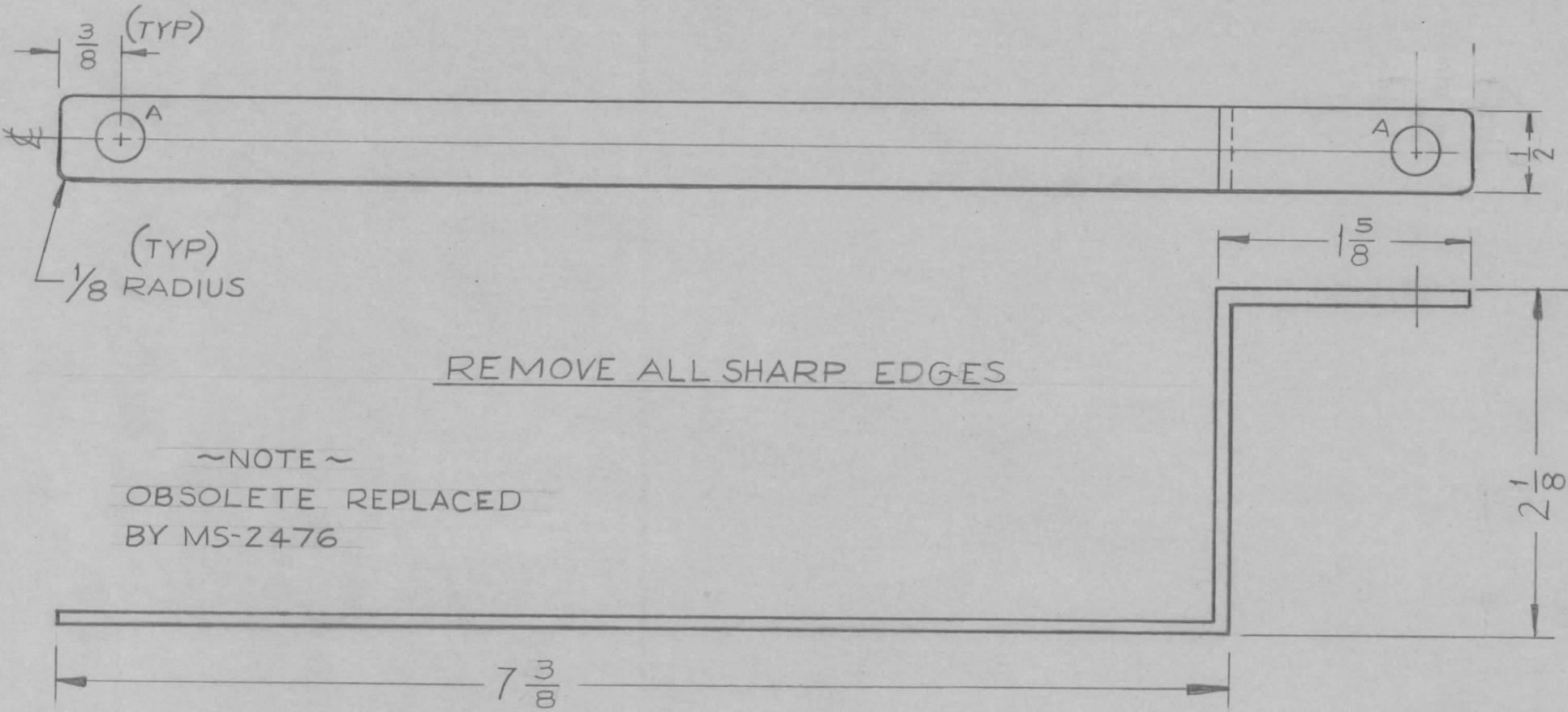
A ~ $5/32$ DIA. 2 REQ.
 B ~ $191-194$ DIA. 2 REQ.
 (FROM 129-632-4)

① MOUNTED IN ALL "B" HOLES AS SHOWN AFTER FINISHING

		2	1	NT-129-632-4	NUT ROUND, SWAGE TYPE		
B	1	4 $31/32$ DIM. ADDED	10-9-62	7397	RF	JLD	
A	3	27/16 DIM WAS 2 1/2	1-11-61	3872	W.A.F.	JCS	
	2	17/32 DIM. WAS 1 1/4					
	1	1 1/4 DIM. WAS 1 1/8					
ISSUE	ITEM	CHANGED FROM	DATE	CH. NO.	DRAFTS	CHECKER	ENG. APP.
TOLERANCES			SCALE: (DO NOT SCALE)				
DEC. DIM. ±			MAXIMUM ALLOWABLE TOLERANCES HAVE BEEN DETERMINED AND ANY DEVIATIONS WILL BE CAUSE FOR REJECTION.				
FRAC. DIM. ± 1/64			REMOVE ALL BURRS AND SHARP EDGES				
ANGULAR DIM. ±							
		5052-H32			RF	JLD	M.Hay
		TYPE & TEMPER	HEAT TREAT. SPEC.		DRAWN	CHECKED	FINAL APPROVAL
		YELLOW IRIDITE			RF	JLD	MS-2462 B
		FINISH & SPEC. NO.	ELEC. DES. APP		MECH. DES. APP		

REQ. PER UNIT	USED ON			MS-2463	A
	MODEL	ASS'Y. NO.	DATE		
1	GPI-40K	AX-209	10-24-60		

A ~ 5/16 DIA. ——— 2 REQ

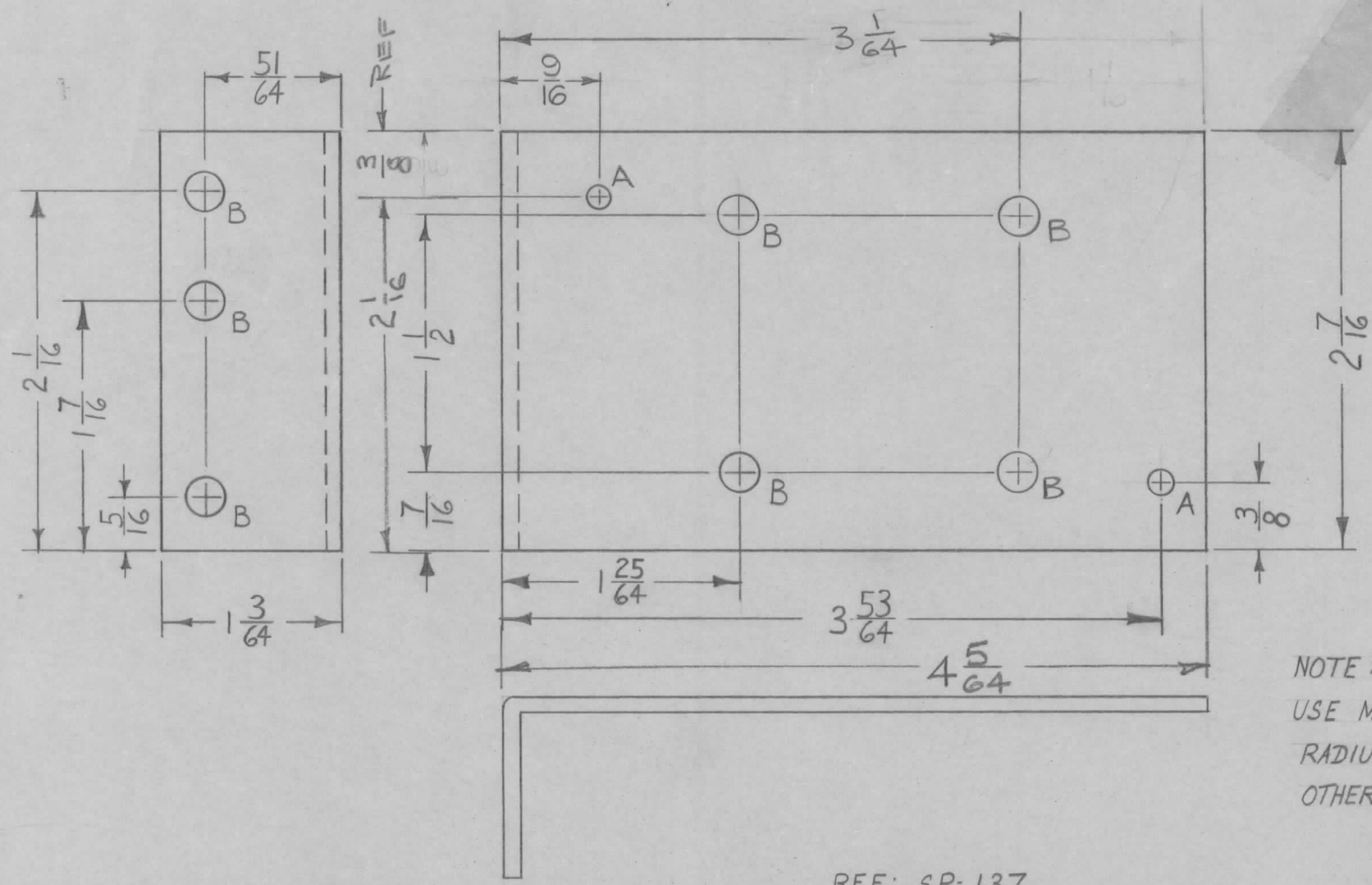


~NOTE~
OBSOLETE REPLACED
BY MS-2476

REMOVE ALL SHARP EDGES

								REQ. ITEM	PART NO.	DESCRIPTION	SYMBOL				
								.064		THE TECHNICAL MATERIEL CORP.					
								STOCK SIZE		MAMARONECK, NEW YORK					
A	1	Obsolete Note Added	12/1/60	3623	RU	JCB	803	COPPER STRAP	CONNECTOR, STRAP						
ISSUE	ITEM	CHANGED FROM	DATE	CH. NO.	DRAFTS	CHECKER	ENG. APP.	MATERIAL	DC. 100 INPUT						
TOLERANCES			SCALE: FULL (DO NOT SCALE)												
DEC. DIM. ±			MAXIMUM ALLOWABLE TOLERANCES HAVE BEEN DETERMINED AND ANY DEVIATIONS WILL BE CAUSE FOR REJECTION. REMOVE ALL BURRS AND SHARP EDGES					TYPE & TEMPER	HEAT TREAT. SPEC.	DRAWN	CHECKED	FINAL APPROVAL			
FRAC. DIM. ± 1/64								GOLD PLATED .000025							
ANGULAR DIM. ±								FINISH & SPEC. NO.		ELEC. DES. APP	MECH. DES. APP				
										MS-2463	A				

REQ. PER. UNIT	USED ON			MS-2470	A
	MODEL	ASS'Y. NO.	DATE		
2	GPT-40K	AX-239	11-3-60		
1	SBG-1L	RAK-20	12-19-61		



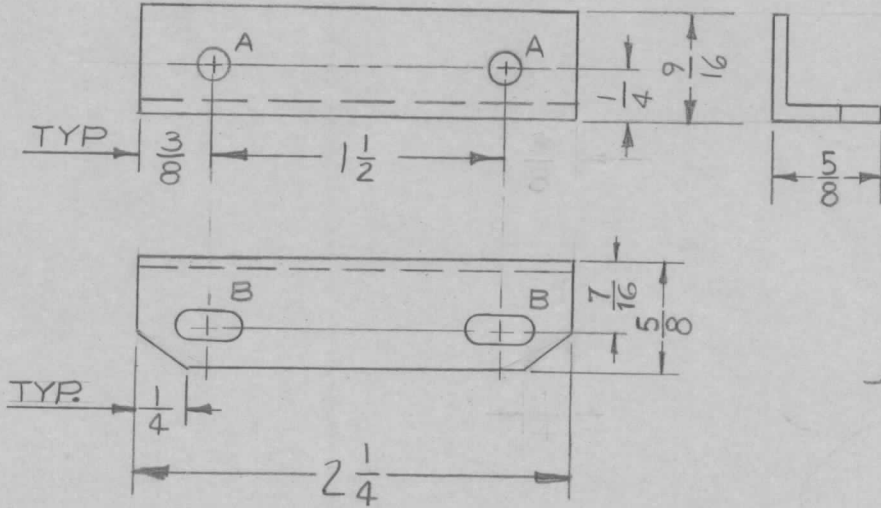
A ~ #27 DRILL 2 REQ.
 B ~ 7/32 D. 7 REQ.

NOTE:
 USE MATERIAL THICKNESS FOR MAX.
 RADIUS ON ALL BENDS UNLESS
 OTHERWISE SPECIFIED.

REF: SP-137

ISSUE	ITEM	CHANGED FROM	DATE	CH. NO.	DRAFTS	CHECKER	ENG. APP.	REQ.	ITEM	PART NO.	DESCRIPTION	SYMBOL		
										.081	THE TECHNICAL MATERIEL CORP. MAMARONECK, NEW YORK BRACKET, SPRING MOUNTING	A		
										STOCK SIZE				
										ALUMINUM				
										MATERIAL				
										5052-H32				
										TYPE & TEMPER	HEATTREAT. SPEC.	DRAWN	CHECKED	FINAL APPROVAL
										S404 YELL IRIDITE				
										FINISH & SPEC. NO.	ELEC. DES. APP	MECH. DES. APP		
													MS-2470	A

REQ. PER. UNIT	USED ON			MS-2472	A
	MODEL	ASS'Y. NO.	DATE		
2	TIS-3		11-3-60		



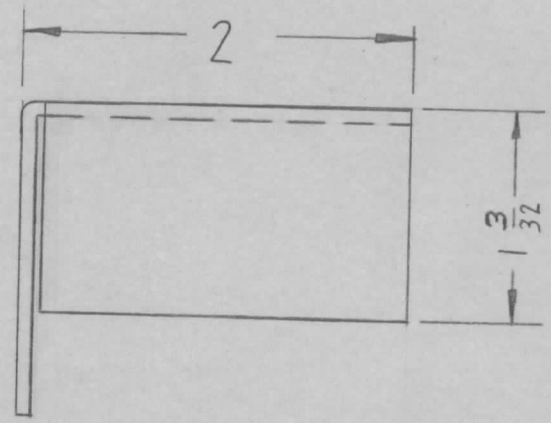
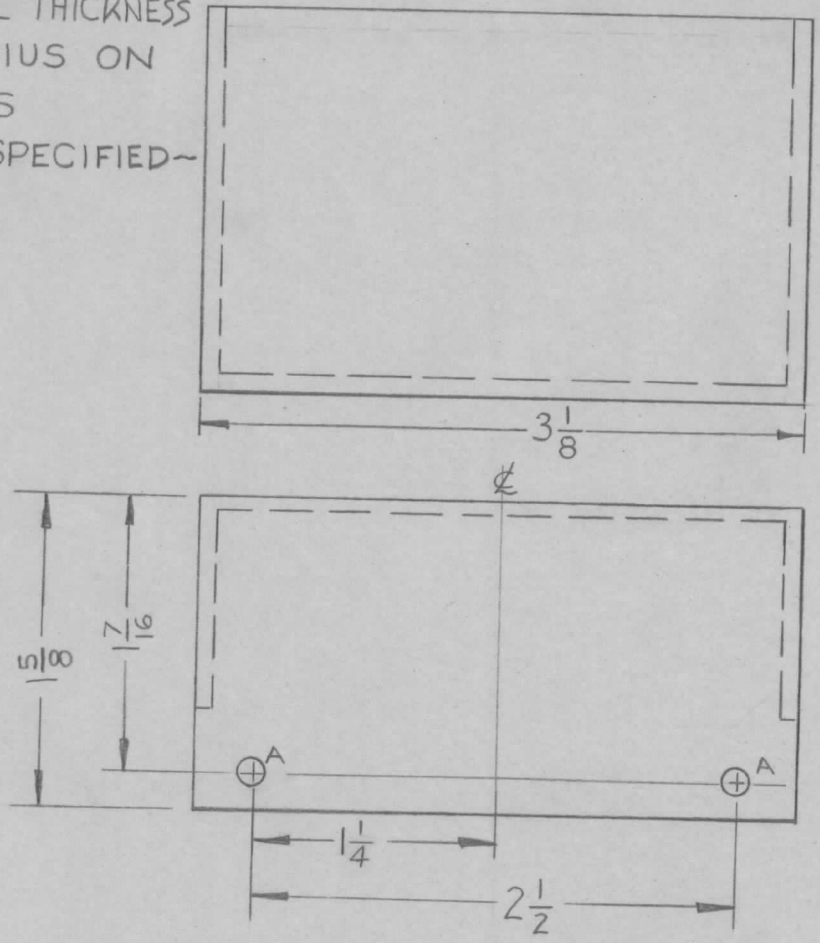
A - 1/64 D 2 HOLES
 B - 5/32 x 5/16 2 SLOTS

							REQ. ITEM	PART NO.	DESCRIPTION	SYMBOL		
							.051		THE TECHNICAL MATERIEL CORP. MAMARONECK, NEW YORK BRACKET, 200KC OVEN			
							STOCK SIZE					
							ALUMINUM					
							MATERIAL					
							5052-H32		<i>[Signature]</i>	<i>[Signature]</i>	<i>[Signature]</i>	
TOLERANCES							SCALE: FULL DO NOT SCALE	TYPE & TEMPER	HEATTREAT. SPEC.	DRAWN	CHECKED	FINAL APPROVAL
DEC. DIM. ±							MAXIMUM ALLOWABLE TOLERANCES HAVE BEEN DETERMINED AND ANY DEVIATIONS WILL BE CAUSE FOR REJECTION. REMOVE ALL BURRS AND SHARP EDGES	S404 - IRIDITE				
FRAC. DIM. ± 1/64								FINISH & SPEC. NO.	ELEC. DES. APP	MECH. DES. APP		
ANGULAR DIM. ±												
											MS-2472	A

REQ. PER. UNIT	USED ON			MS-2475
	MODEL	ASS'Y. NO.	DATE	
	1 T15-3		11-14-60	
1	XFK		11-14-60	

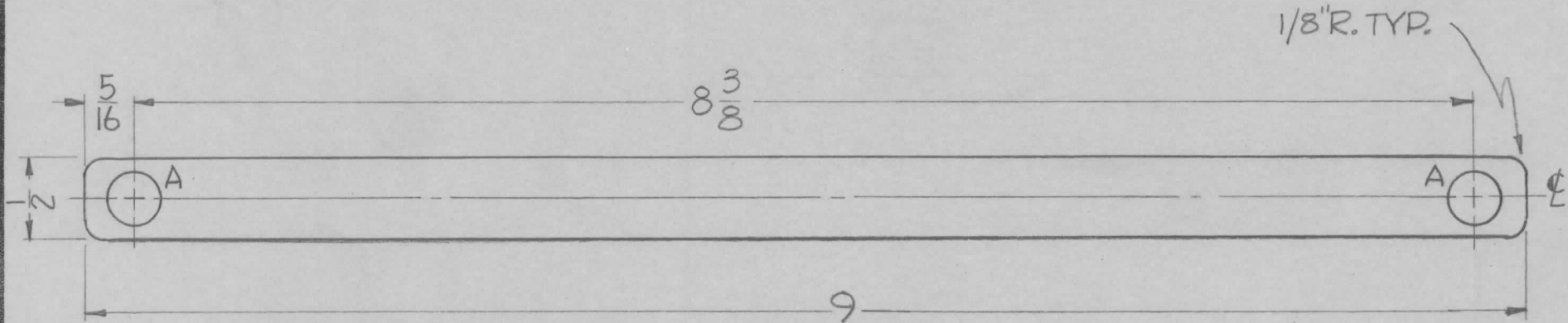
NOTE ~
 USE MATERIAL THICKNESS
 FOR MAX. RADIUS ON
 BEND, UNLESS
 OTHERWISE SPECIFIED ~

A ~ 9/64 DIA. 2 REQ



ISSUE	ITEM	CHANGED FROM	DATE	CH. NO.	DRAFTS	CHECKER	ENG. APP.	REQ. ITEM	PART NO.	DESCRIPTION	SYMBOL	
								.051		THE TECHNICAL MATERIEL CORP.		
								STOCK SIZE		MAMARONECK, NEW YORK		
								ALUMINUM		COVER, BOARD		
								MATERIAL		TERMINAL BOARD, ELEMENT		
								5052-H32		REU	ADQ	
								TYPE & TEMPER	HEAT TREAT. SPEC.	DRAWN	CHECKED	
								S404 IRIDITE				
								FINISH & SPEC. NO.		ELEC. DES. APP	MECH. DES. APP	
TOLERANCES			SCALE: (DO NOT SCALE)					MAXIMUM ALLOWABLE TOLERANCES HAVE BEEN DETERMINED AND ANY DEVIATIONS WILL BE CAUSE FOR REJECTION. REMOVE ALL BURRS AND SHARP EDGES			MS-2475	
DEC. DIM. ±												
FRAC. DIM. ± 1/64												
ANGULAR DIM. ±												

REQ. PER. UNIT	USED ON			MS-2476	A
	MODEL	ASS'Y. NO.	DATE		
1	GPT-40K	AX-209	11-14-60		



A ~ $\frac{5}{16}$ DIA. 2 REQ.

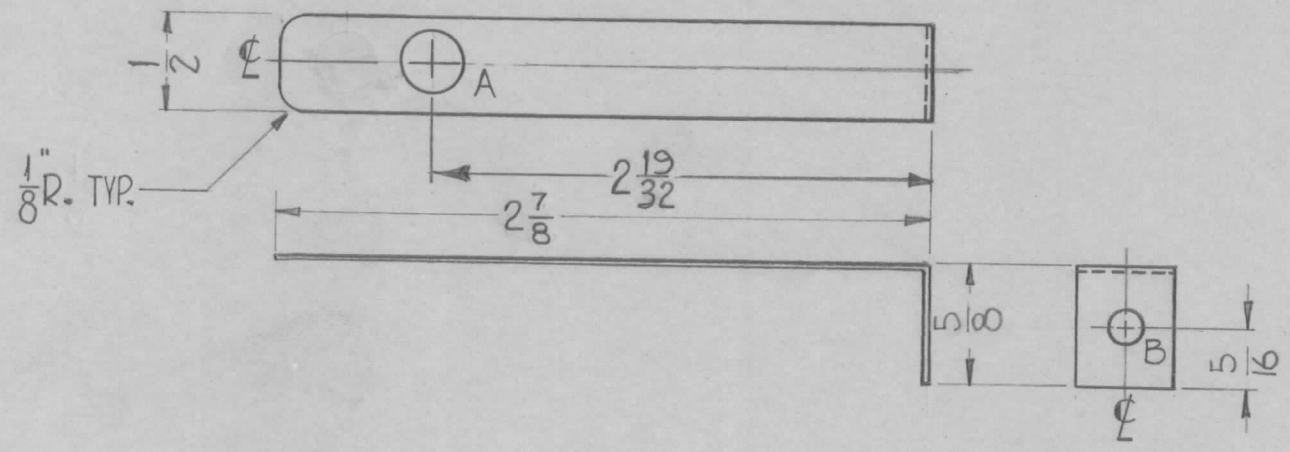
UNLESS OTHERWISE SPECIFIED DIMENSIONS ARE IN INCHES AND INCLUDE CHEMICALLY APPLIED OR PLATED FINISHES		
DECIMALS	TOLERANCES	FRACTIONS
.X ± .05		± 1/64
.XX ± .01		ANGLES
.XXX ± .005		± 0° 30'

CUT HERE
GUARANTEED
2-66

							REQ.	ITEM	PART NO.	DESCRIPTION	SYMBOL	
									.031 THK	THE TECHNICAL MATERIEL CORP.		
									STOCK SIZE	MAMARONECK, NEW YORK		
									COPPER	STRAP, DIRECTIONAL COUPLER INPUT		
									MATERIAL			
A	2	FINISH WAS GOLD PLATED	5-8-61	4853	WLF	JCS				DDM	a.g.	QJ
	1	"A" DIA. ADDED										
ISSUE	ITEM	CHANGED FROM	DATE	CH. NO.	DRAFTS	CHECKER	ENG. APP.					
TOLERANCES			SCALE:									
DEC. DIM. ±			MAXIMUM ALLOWABLE TOLERANCES HAVE									
FRAC. DIM. ±			BEEN DETERMINED AND ANY DEVIATIONS									
ANGULAR DIM. ±			WILL BE CAUSE FOR REJECTION.									
			REMOVE ALL BURRS AND SHARP EDGES									
									SILVER PLATE & CLEAR IRIDITE			
									FINISH & SPEC. NO.	ELEC. DES. APP	MECH. DES. APP	
												MS-2476
												A

REQ. PER. UNIT	USED ON			MS-2477	C
	MODEL	ASS'Y. NO.	DATE		
1	GPT-40K	AX-275	11-14-60		

HOLES
 A ~ 5/16 DIA.
 B ~ 3/16 DIA.
 REQ.
 1
 1



FINISH
 S 245 SILVER PLATE, .0003 THK
 S 423 SILVER KOTE IRIDITE

UNLESS OTHERWISE SPECIFIED
 DIMENSIONS ARE IN INCHES AND INCLUDE
 CHEMICALLY APPLIED OR PLATED FINISHES

DECIMALS	FRACTIONS
.X ± .05	± 1/64
.XX ± .01	ANGLES
.XXX ± .005	± 0° 30'

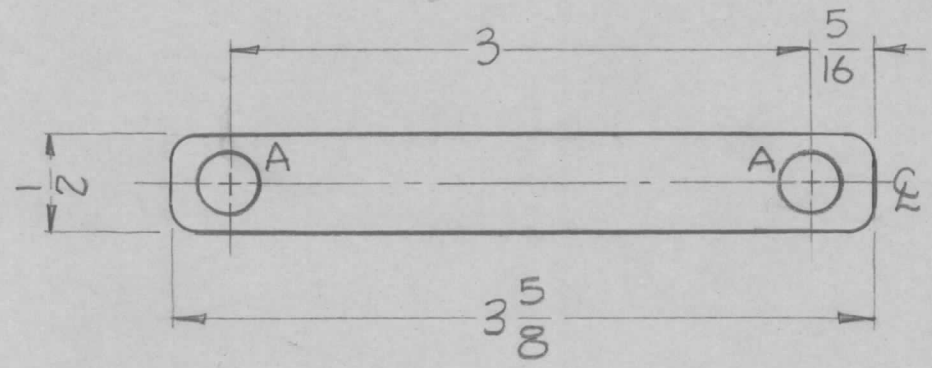
TOLERANCES

CUT HERE
 GUARANTEED
 2-66

REQ.	ITEM	PART NO.	DESCRIPTION		SYMBOL						
C	1	2 7/8 WAS 3 1/16	9.17.64	12364	MB @ QOR	.031 STOCK SIZE COPPER MATERIAL	THE TECHNICAL MATERIEL CORP. MAMARONECK, NEW YORK STRAP, UNBALANCED OUTPUT				
B	1	FINISH WAS GOLD PL. .000025	8-22-62	7101	SG Jhe Jhe						
A	1	2 19/32 DIM. WAS 3 3/8	1-4-61	3856	WBF JCB QOR						
ISSUE	ITEM	CHANGED FROM	DATE	CH. NO.	DRAFTS	CHECKER	ENG. APP.				
TOLERANCES			SCALE: DO NOT SCALE								
DEC. DIM. ± FRAC. DIM. ± ANGULAR DIM. ±			MAXIMUM ALLOWABLE TOLERANCES HAVE BEEN DETERMINED AND ANY DEVIATIONS WILL BE CAUSE FOR REJECTION. REMOVE ALL BURRS AND SHARP EDGES			TYPE & TEMPER		HEATTREAT. SPEC.	DRAWN	CHECKED	FINAL APPROVAL
						SEE NOTE					
						FINISH & SPEC. NO.		ELEC. DES. APP.	MECH. DES. APP.	MS-2477 C	

REQ. PER UNIT	USED ON			MS-2478	A
	MODEL	ASS'Y. NO.	DATE		
2	GPT-40K	AX-275	11-14-60		

HOLES
A - 5/16 DIA. REQ. 2



FINISH
S 245 SILVER PLATE, .0003 THK
S 423 SILVER KOTE IRIDITE,

UNLESS OTHERWISE SPECIFIED
DIMENSIONS ARE IN INCHES AND INCLUDE
CHEMICALLY APPLIED OR PLATED FINISHES

DECIMALS	FRACTIONS
.X ± .05	± 1/64
.XX ± .01	ANGLES
.XXX ± .005	± 0° 30'

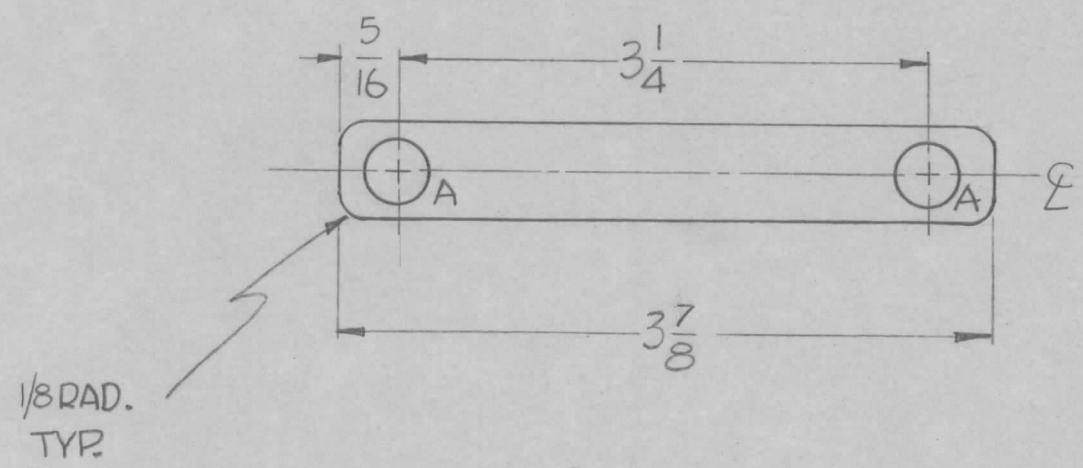
TOLERANCES

CUT HERE
GUARANTEED
2-66

REQ.	ITEM	PART NO.	DESCRIPTION				SYMBOL
		.064 THK.	THE TECHNICAL MATERIEL CORP.				
		STOCK SIZE	MAMARONECK, NEW YORK				
		COPPER	STRAP, SWITCHING				
		MATERIAL					
A	1	FINISH WAS GOLD PL. .000025	8-23-62	7101	SG	<i>Jde</i>	<i>AB</i>
ISSUE	ITEM	CHANGED FROM	DATE	CH. NO.	DRAFTS	CHECKER	ENG. APP.
TOLERANCES			SCALE:				
DEC. DIM. ±			MAXIMUM ALLOWABLE TOLERANCES HAVE BEEN DETERMINED AND ANY DEVIATIONS WILL BE CAUSE FOR REJECTION.				
FRAC. DIM. ±			REMOVE ALL BURRS AND SHARP EDGES				
ANGULAR DIM. ±			TYPE & TEMPER		HEAT TREAT. SPEC.	DRAWN	CHECKED
			SEE NOTE				
			FINISH & SPEC. NO.		ELEC. DES. APP	MECH. DES. APP	MS-2478 A

REQ. PER. UNIT	USED ON			MS-2479	B
	MODEL	ASS'Y. NO.	DATE		
1	GPT-40K	AX-275	11-14-60		

HOLES
A-5/16 DIA. REQ. 2



UNLESS OTHERWISE SPECIFIED DIMENSIONS ARE IN INCHES AND INCLUDE CHEMICALLY APPLIED OR PLATED FINISHES		
DECIMALS	TOLERANCES	FRACTIONS
.X ± .05		± 1/64
.XX ± .01		ANGLES
.XXX ± .005		± 0° 30'

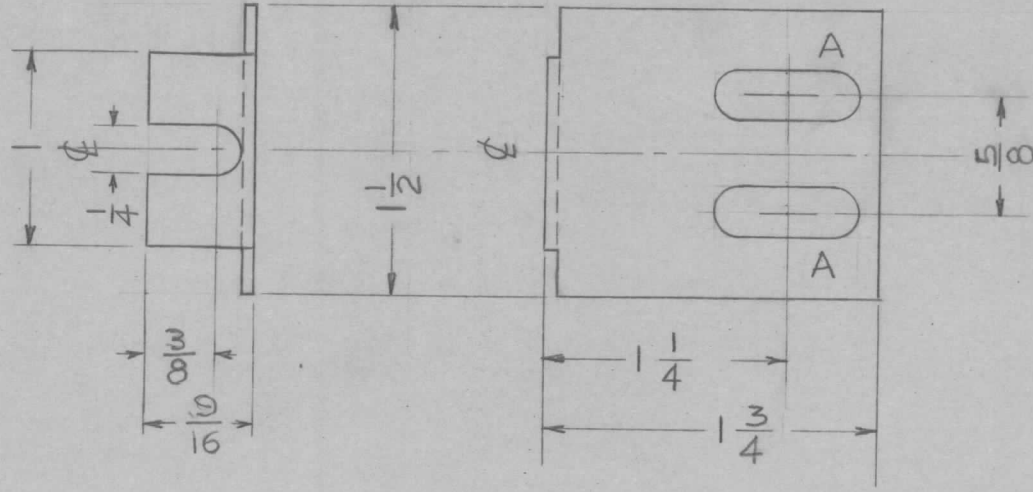
CUT HERE
GUARANTEED
2-56

FINISH:
S245 SILVER PLATE, .0003 THK
S423 SILVER KOTE IRIDITE

REQ.	ITEM	PART NO.	DESCRIPTION				SYMBOL
		.064 THK	THE TECHNICAL MATERIEL CORP.				
		STOCK SIZE	MAMARONECK, NEW YORK				
B	1	FINISH WAS GOLD PL..000025	STRAP, ANT. TUNER INPUT				
A	1	DIM. 3 7/8 WAS 3 3/8					
ISSUE	ITEM	CHANGED FROM	DATE	CH. NO.	DRAFTS	CHECKER	ENG. APP.
TOLERANCES			SCALE:				
			MAXIMUM ALLOWABLE TOLERANCES HAVE BEEN DETERMINED AND ANY DEVIATIONS WILL BE CAUSE FOR REJECTION. REMOVE ALL BURRS AND SHARP EDGES				
TYPE & TEMPER		HEATTREAT. SPEC.	DRAWN	CHECKED	FINAL APPROVAL		
SEE NOTE					MS-2479 B		
FINISH & SPEC. NO.		ELEC. DES. APP	MECH. DES. APP				

REQ. PER. UNIT	USED ON			MS-2482
	MODEL	ASSY. NO.	DATE	
2	GPT-10K	AX 240	11-22-60	

A - 1/4 x 3/4 SLOTS - 2 REQ.



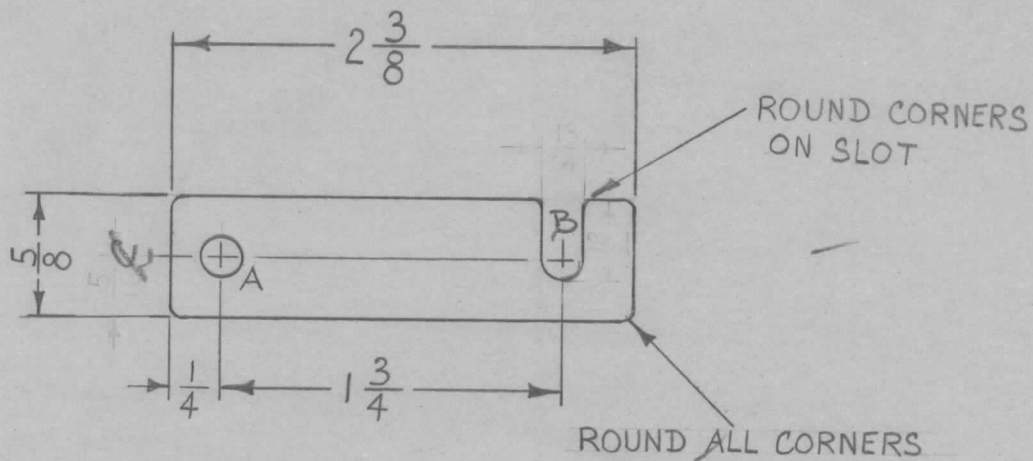
REF: TK-105

ISSUE	ITEM	CHANGED FROM	DATE	CH. NO.	DRAFTS	CHECKER	ENG. APP.	REQ.	ITEM	PART NO.	DESCRIPTION	SYMBOL
										-062	THE TECHNICAL MATERIEL CORP.	
										STOCK SIZE	MAMARONECK, NEW YORK	
										STEEL	ADAPTER BRKT., REAR	
										MATERIAL	1 3/4 SLIDE	
										MILD	<i>DeKunin</i>	<i>Sh</i>
										TYPE & TEMPER	DRAWN	CHECKED
										HEAT TREAT. SPEC.		
										CADMIUM PLATE & YELL. IRIDITE		
										FINISH & SPEC. NO.	ELEC. DES. APP.	MECH. DES. APP.
												MS-2482

REQ. PER. UNIT	USED ON			MS-2486
	MODEL	ASS'Y. NO.	DATE	
	3	APP-4	12-5-60	

A - $\frac{13}{64}$ DIA. 1 REQ.

B - $\frac{13}{64} \times \frac{13}{32}$ SLOT 1 REQ.



UNLESS OTHERWISE SPECIFIED
DIMENSIONS ARE IN INCHES AND INCLUDE
CHEMICALLY APPLIED OR PLATED FINISHES

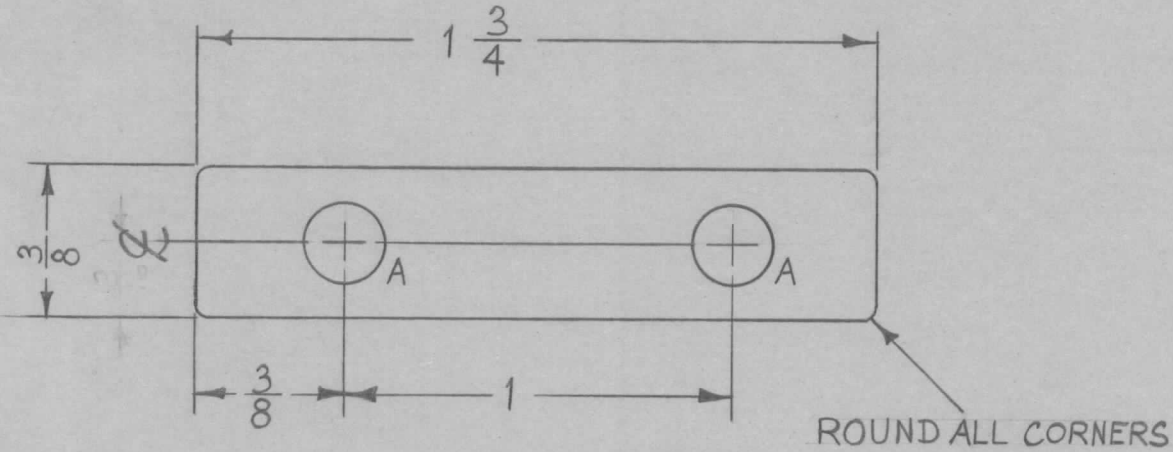
DECIMALS	TOLERANCES	FRACTIONS
.X ± .05		± 1/64
.XX ± .01		ANGLES
.XXX ± .005		± 0° 30'

CUT HERE
GUARANTEED
2-56

REQ.	ITEM	PART NO.	DESCRIPTION	SYMBOL										
		18 GAGE	THE TECHNICAL MATERIEL CORP. MAMARONECK, NEW YORK	BUS BAR, SWITCHING										
		STOCK SIZE												
		COPPER												
		MATERIAL												
ISSUE	ITEM	CHANGED FROM	DATE	CH. NO.	DRAFTS	CHECKER	ENG. APP.	COMM. H		M.A.F.	Jude	SPM		
TOLERANCES			SCALE:		TYPE & TEMPER		HEAT TREAT. SPEC.		DRAWN		CHECKED		FINAL APPROVAL	
DEC. DIM. ±			MAXIMUM ALLOWABLE TOLERANCES HAVE		S135 NICKEL PL.				RK		MS-2486			
FRAC. DIM. ±			BEEN DETERMINED AND ANY DEVIATIONS		FINISH & SPEC. NO.				ELEC. DES. APP		MECH. DES. APP			
ANGULAR DIM. ±			WILL BE CAUSE FOR REJECTION.											
			REMOVE ALL BURRS AND SHARP EDGES											

REQ. PER. UNIT	USED ON			MS-2487
	MODEL	ASS'Y. NO.	DATE	
2	APP-4		12-5-60	

A - $\frac{13}{64}$ DIA. 2 REQ.



UNLESS OTHERWISE SPECIFIED
DIMENSIONS ARE IN INCHES AND INCLUDE
CHEMICALLY APPLIED OR PLATED FINISHES

DECIMALS	TOLERANCES	FRACTIONS
.X ± .05		± 1/64
.XX ± .01		ANGLES
.XXX ± .005		± 0° 30'

CUT HERE
GUARANTEED
2-66

REQ.	ITEM	PART NO.	DESCRIPTION	SYMBOL								
		18 GAGE	THE TECHNICAL MATERIEL CORP. MAMARONECK, NEW YORK	BUS BAR FIXED								
		STOCK SIZE										
		COPPER										
		MATERIAL										
ISSUE	ITEM	CHANGED FROM	DATE	CH. NO.	DRAFTS	CHECKER	ENG. APP.	1/2 H		<i>M.A.F.</i>	<i>J.H.C.</i>	<i>S.P.M.</i>
TOLERANCES			SCALE: 1:2		TYPE & TEMPER		HEAT TREAT. SPEC.	DRAWN	CHECKED	FINAL APPROVAL		
DEC. DIM. ±			MAXIMUM ALLOWABLE TOLERANCES HAVE BEEN DETERMINED AND ANY DEVIATIONS WILL BE CAUSE FOR REJECTION. REMOVE ALL BURRS AND SHARP EDGES		S135 BR. NICKEL PL.			<i>RR</i>	<i>[Signature]</i>	MS-2487		
FRAC. DIM. ±					FINISH & SPEC. NO.		ELEC. DES. APP	MECH. DES. APP				
ANGULAR DIM. ±												

UNLESS OTHERWISE SPECIFIED
 DIMENSIONS ARE IN INCHES AND INCLUDE
 CHEMICALLY APPLIED OR PLATED FINISHES

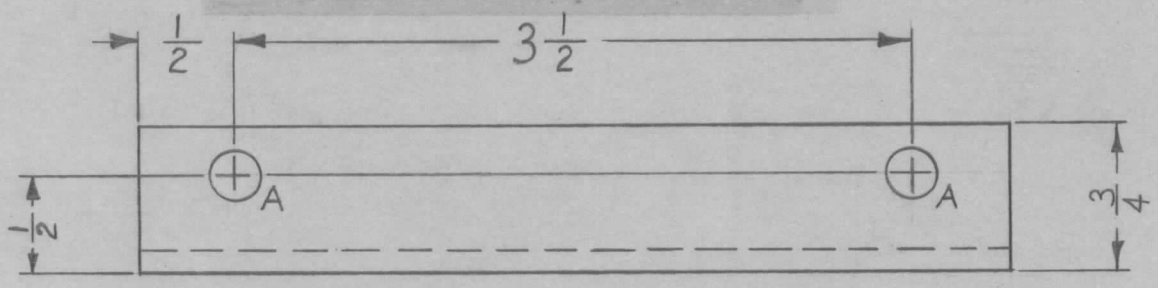
DECIMALS	FRACTIONS
.X ± .05	± 1/64
.XX ± .01	ANGLES
.XXX ± .005	± 0° 30'

TOLERANCES

CUT HERE
 GUARANTEED
 2-66

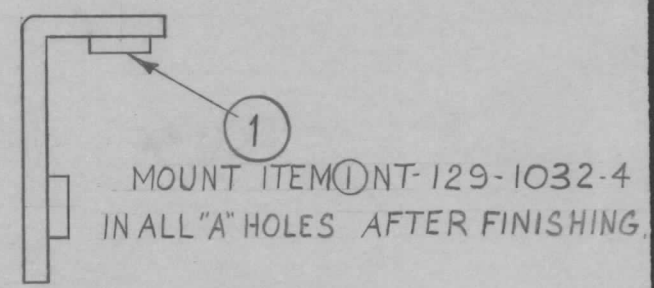
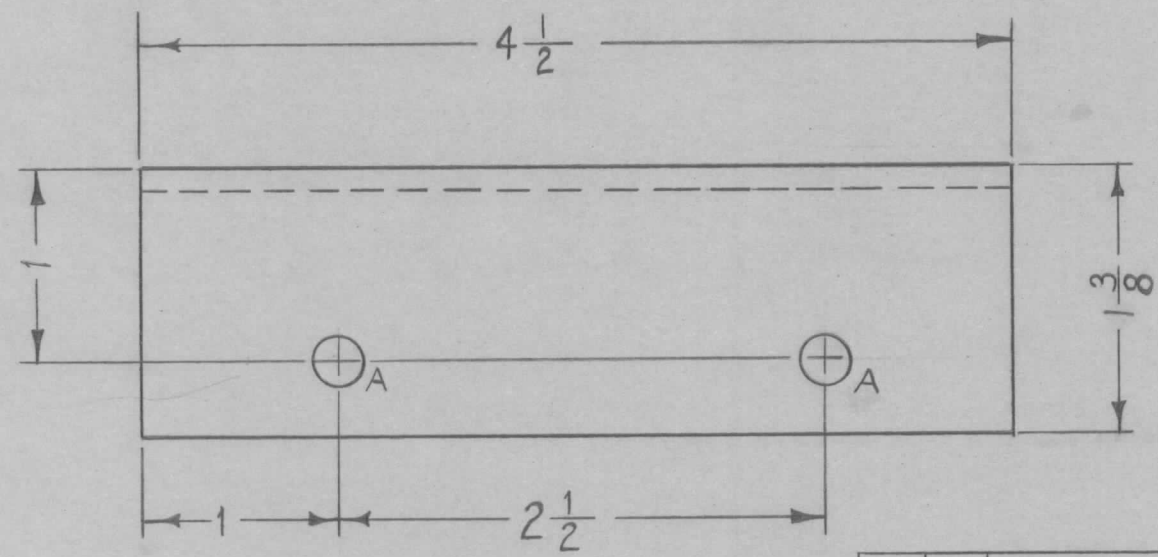
REQ. PER UNIT	USED ON		
	MODEL	ASS'Y. NO.	DATE
2	APP-4		12-5-60

MS-2488



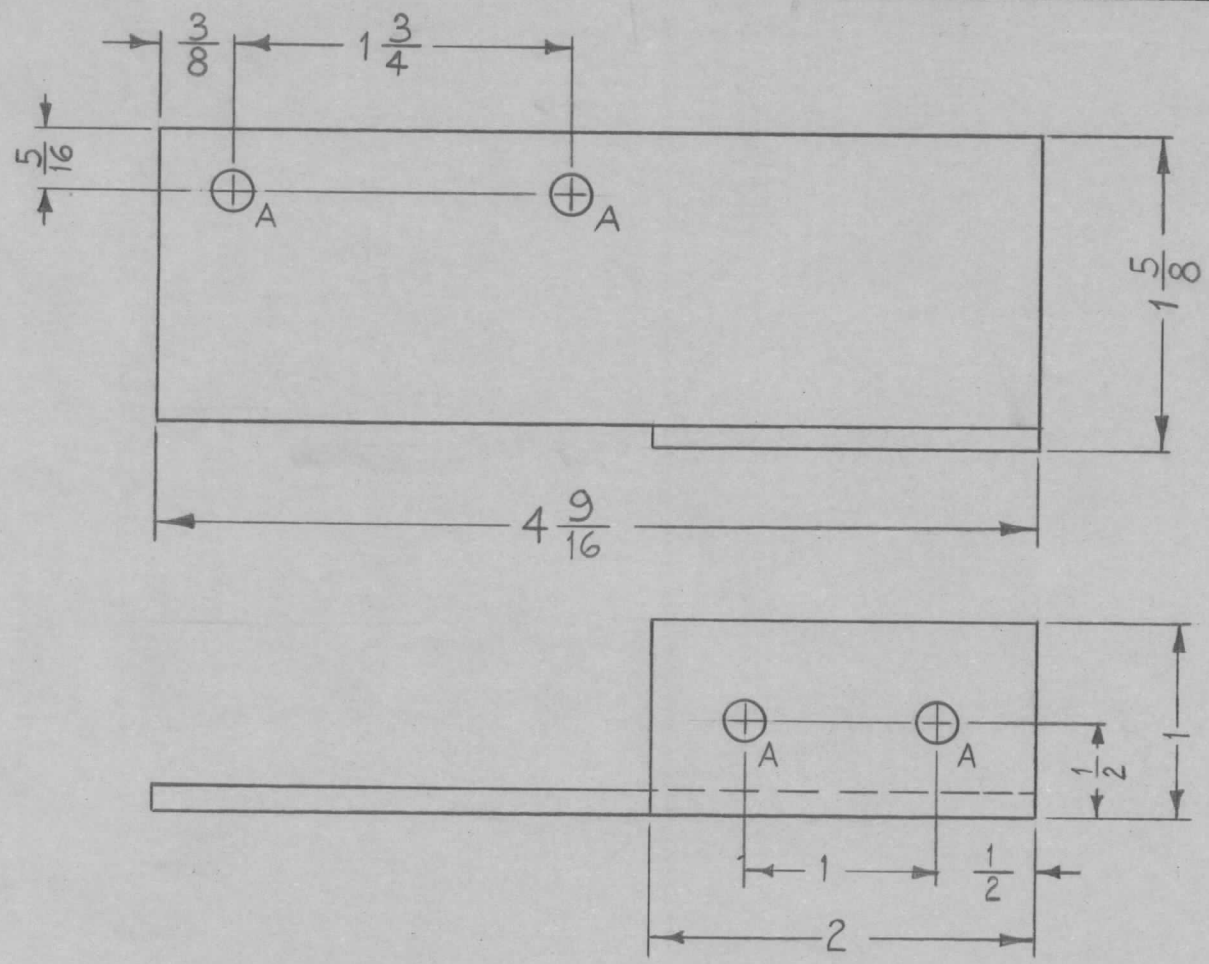
A ~ .251-.254 DIA. 4 REQ.

NOTE:
 USE MATERIAL THICKNESS FOR
 MAX. RADIUS ON ALL BENDS
 UNLESS OTHERWISE SPECIFIED.



4	1	NT-129-1032-4	NUT, ROUND, SWAGE TYPE								
REQ.	ITEM	PART NO.	DESCRIPTION		SYMBOL						
		1/8	THE TECHNICAL MATERIEL CORP.								
		STOCK SIZE	MAMARONECK, NEW YORK								
		ALUMINUM	BRACKET, MOUNTING								
		MATERIAL	POWER INPUT ASSY								
ISSUE	ITEM	CHANGED FROM	DATE	CH. NO.	DRAFTS	CHECKER	ENG. APP.	5052-H32	PK	Julia	SAH
TOLERANCES			SCALE: +			TYPE & TEMPER		HEAT TREAT. SPEC.	DRAWN	CHECKED	FINAL APPROVAL
DEC. DIM. ±			MAXIMUM ALLOWABLE TOLERANCES HAVE BEEN DETERMINED AND ANY DEVIATIONS WILL BE CAUSE FOR REJECTION. REMOVE ALL BURRS AND SHARP EDGES			S404 YELL. IRIDITE					MS-2488
FRAC. DIM. ±						FINISH & SPEC. NO.		ELEC. DES. APP		MECH. DES. APP	
ANGULAR DIM. ±											

REQ. PER. UNIT	USED ON			MS-2493
	MODEL	ASS'Y. NO.	DATE	
1	RAK-9	A-1773	12-15-60	



A ~ $\frac{13}{64}$ DIA. 4 REQ.

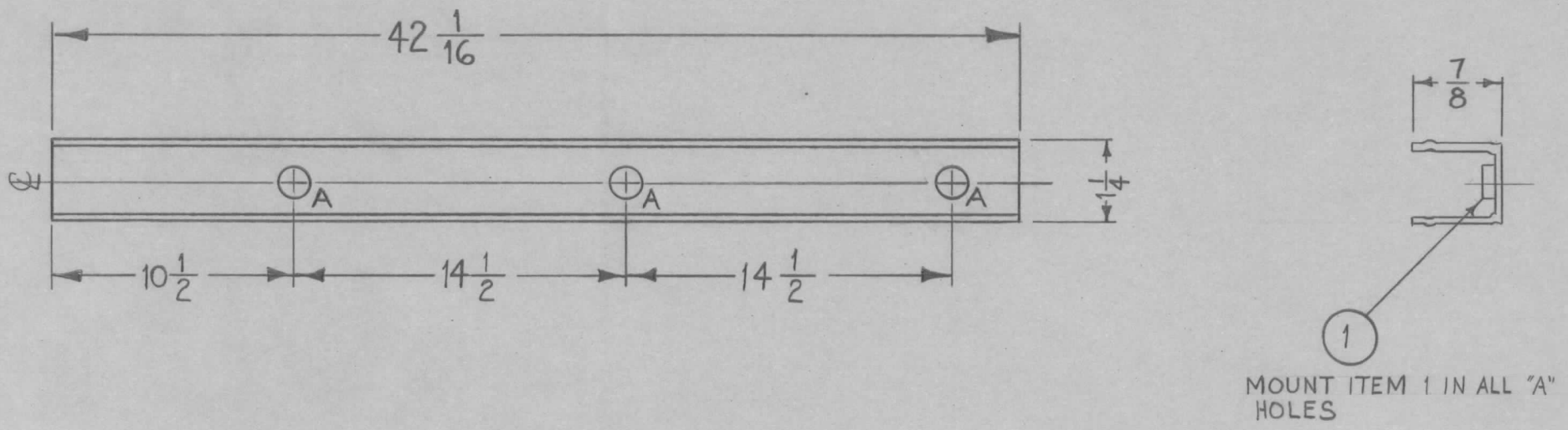
ISSUE	ITEM	CHANGED FROM	DATE	CH. NO.	DRAFTS	CHECKER	ENG. APP.	REQ. ITEM	PART NO.	DESCRIPTION	SYMBOL
								1/8		THE TECHNICAL MATERIEL CORP.	
								STOCK SIZE		MAMARONECK, NEW YORK	
								ALUMINUM		MTG. BRACKET, SPRING MOTOR	
								MATERIAL			
								5052-H32		<i>M.A.F.</i>	<i>J.D.</i>
								TYPE & TEMPER	HEAT TREAT. SPEC.	DRAWN	CHECKED
								S404 YELL. IRIDITE		<i>RK</i>	<i>SFM</i>
								FINISH & SPEC. NO.		ELEC. DES. APP	MECH. DES. APP
											MS-2493

TOLERANCES
 DEC. DIM. ±
 FRAC. DIM. ± $\frac{1}{64}$
 ANGULAR DIM. ±

SCALE:
 MAXIMUM ALLOWABLE TOLERANCES HAVE BEEN DETERMINED AND ANY DEVIATIONS WILL BE CAUSE FOR REJECTION. REMOVE ALL BURRS AND SHARP EDGES

REQ. PER UNIT	USED ON			MS-2494
	MODEL	ASS'Y. NO.	DATE	
1	RAK-10		12-19-60	

A-.191-.194 DIA. 3 REQ.



UNLESS OTHERWISE SPECIFIED
DIMENSIONS ARE IN INCHES AND INCLUDE
CHEMICALLY APPLIED OR PLATED FINISHES

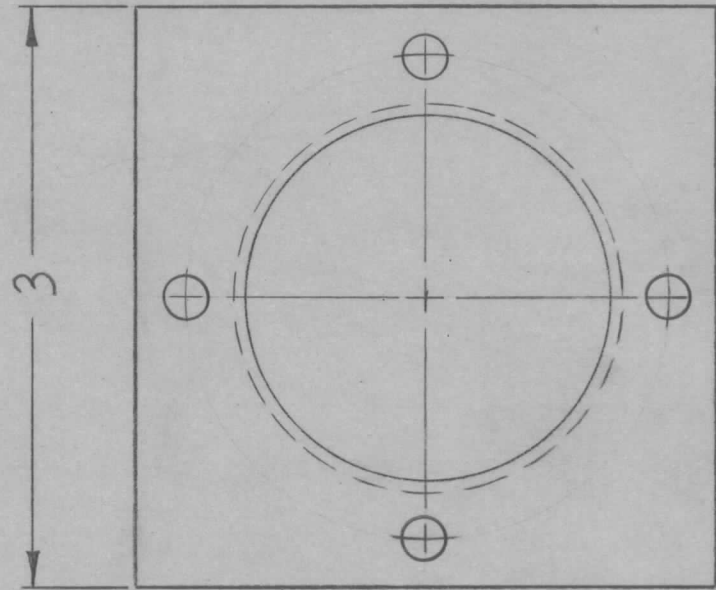
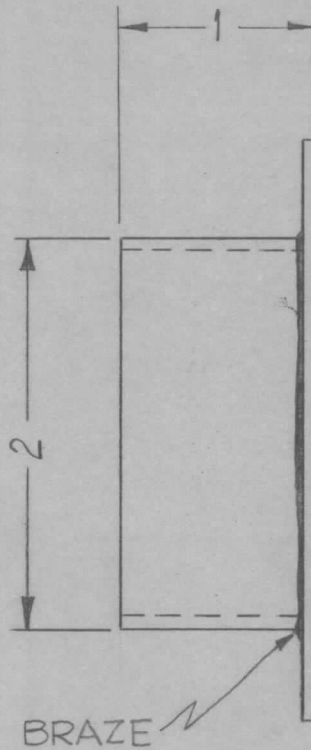
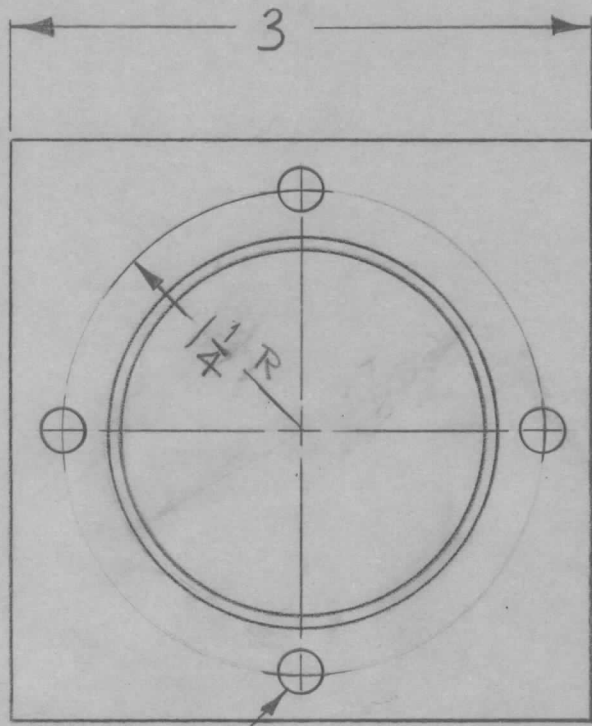
DECIMALS	TOLERANCES	FRACTIONS
.X ± .05		± 1/64
.XX ± .01		ANGLES
.XXX ± .005		± 0° 30'

CUT HERE
GUARANTEED
2-66

REF: PO-160-2

3		1		NT-129-632-3		NUT, ROUND, SWAGE TYPE		
REQ.	ITEM	PART NO.				DESCRIPTION		SYMBOL
		STOCK SIZE				THE TECHNICAL MATERIEL CORP.		
		MATERIAL				MAMARONECK, NEW YORK		
						A.C STRIP CHANNEL		
ISSUE	ITEM	CHANGED FROM	DATE	CH. NO.	DRAFTS	CHECKER	ENG. APP.	
TOLERANCES			SCALE: DO NOT SCALE					
DEC. DIM. ±			MAXIMUM ALLOWABLE TOLERANCES HAVE BEEN DETERMINED AND ANY DEVIATIONS WILL BE CAUSE FOR REJECTION. REMOVE ALL BURRS AND SHARP EDGES					
FRAC. DIM. ±								
ANGULAR DIM. ±								
TYPE & TEMPER		HEATTREAT. SPEC.		DRAWN		CHECKED		FINAL APPROVAL
				<i>W.A.F.</i>		<i>J.W.</i>		<i>SKM</i>
FINISH & SPEC. NO.		ELEC. DES. APP		MECH. DES. APP		MS-2494		

REQ. PER UNIT	USED ON			MS-2498	A
	MODEL	ASS'Y. NO.	DATE		
	GPT-40K		12-28-60		



7/32 D.
4 REQ.

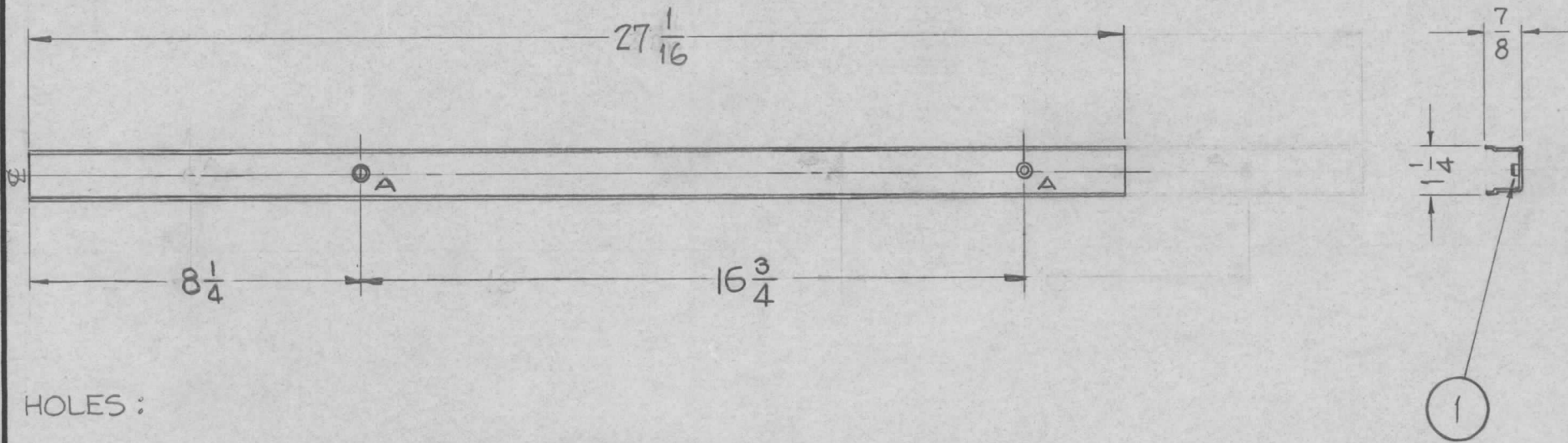
REF: RY-134 (2)

UNLESS OTHERWISE SPECIFIED DIMENSIONS ARE IN INCHES AND INCLUDE CHEMICALLY APPLIED OR PLATED FINISHES	
DECIMALS	FRACTIONS
.X ± .05	± 1/64
.XX ± .01	ANGLES
.XXX ± .005	± 0° 30'

CUT HERE
GUARANTEED
2-66

REQ.	ITEM	PART NO.	DESCRIPTION				SYMBOL
		.064	THE TECHNICAL MATERIEL CORP.				
		STOCK SIZE	MAMARONECK, NEW YORK				
A	1	BRASS	MOUNTING, FLANGE				
		MATERIAL	ELBOW, AIR DUCT				
ISSUE ITEM		CHANGED FROM	DATE	CH. NO.	DRAFTS	CHECKER	ENG. APP.
			1-26-61	4014	JDM	JCB	RFM
TOLERANCES			SCALE: FULL & DO NOT SCALE				
DEC. DIM. ±			MAXIMUM ALLOWABLE TOLERANCES HAVE BEEN DETERMINED AND ANY DEVIATIONS WILL BE CAUSE FOR REJECTION.				
FRAC. DIM. ±			REMOVE ALL BURRS AND SHARP EDGES				
ANGULAR DIM. ±			1/2 H			W.A.F.	JHE
		TYPE & TEMPER	HEAT TREAT. SPEC.	DRAWN		CHECKED	
		BLACK PAINT		FAS		MS-2498	
		FINISH & SPEC. NO.	ELEC. DES. APP		MECH. DES. APP		A

REQ. PER UNIT	USED ON			MS-2499	A
	MODEL	ASS'Y. NO.	DATE		
1	RAK-17A	AX-245	1-4-61		



HOLES :

A-.191 DIA. MIN., .194 MAX. DIA. 2 Req.

REF: TMC DWG - PO-160

		2	1	NT129-632-3	NUT, ROUND, SWAGE TYPE				
		REQ.	ITEM	PART NO.	DESCRIPTION			SYMBOL	
					THE TECHNICAL MATERIEL CORP.				
					MAMARONECK, NEW YORK				
					AC STRIP				
					MATERIAL				
					J.C. Biele				
					EPM				
					FINAL APPROVAL				
					MS-2499				
					A				
ISSUE		ITEM	CHANGED FROM	DATE	CH. NO.	DRAFTS	CHECKER	ENG. APP.	
A		3	over All Length was 33"	1-30-61	4029	RU	JCS		
		2	1(A) Hole Deleted						
		1	2(A) Holes Relocated						
TOLERANCES				SCALE: 1/4, Do Not Scale					
DEC. DIM. ±				MAXIMUM ALLOWABLE TOLERANCES HAVE BEEN DETERMINED AND ANY DEVIATIONS WILL BE CAUSE FOR REJECTION.					
FRAC. DIM. ± 1/64				REMOVE ALL BURRS AND SHARP EDGES					
ANGULAR DIM. ±									
				TYPE & TEMPER		HEATTREAT. SPEC.		DRAWN	
								RK	
				FINISH & SPEC. NO.		ELEC. DES. APP		MECH. DES. APP	