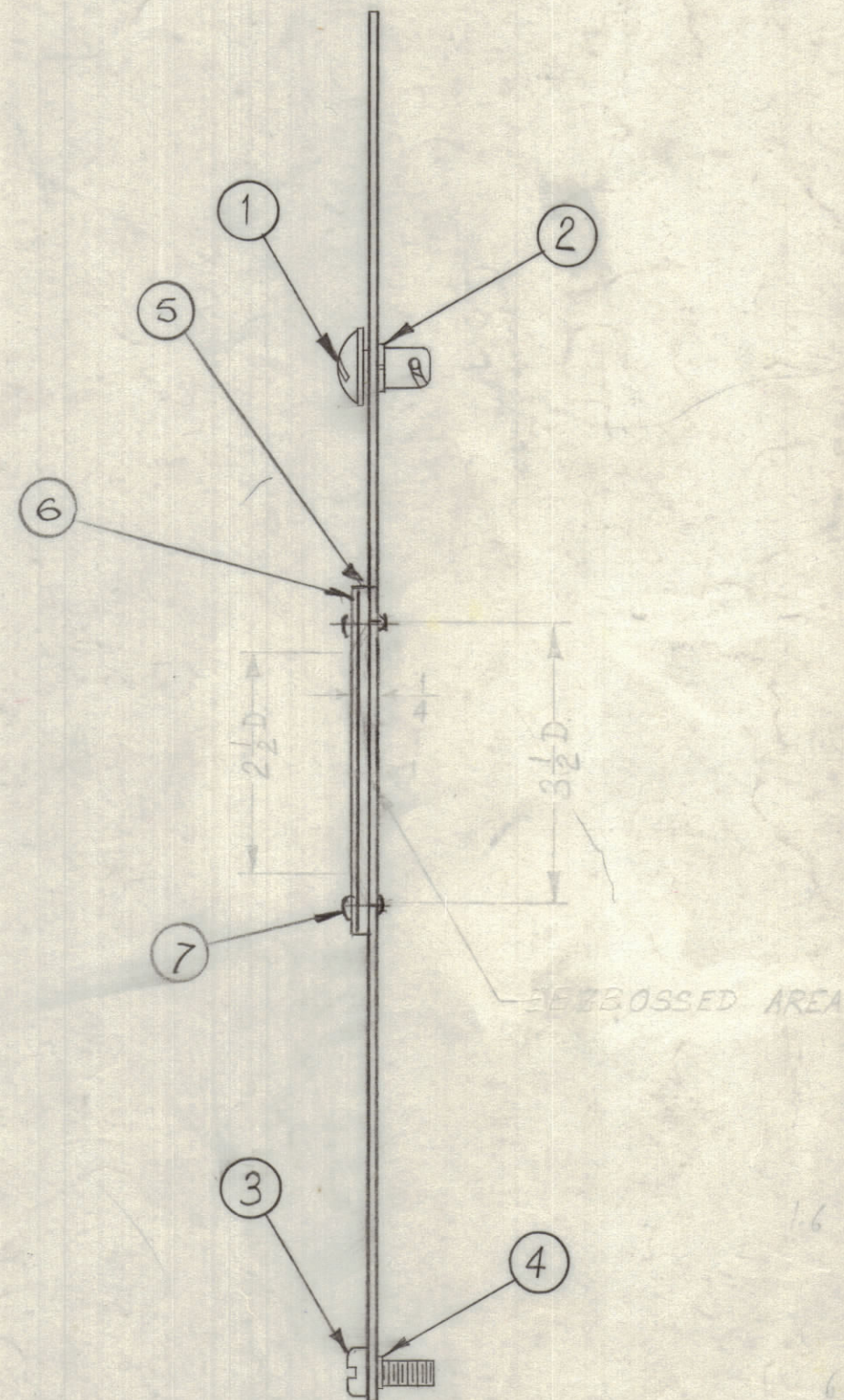
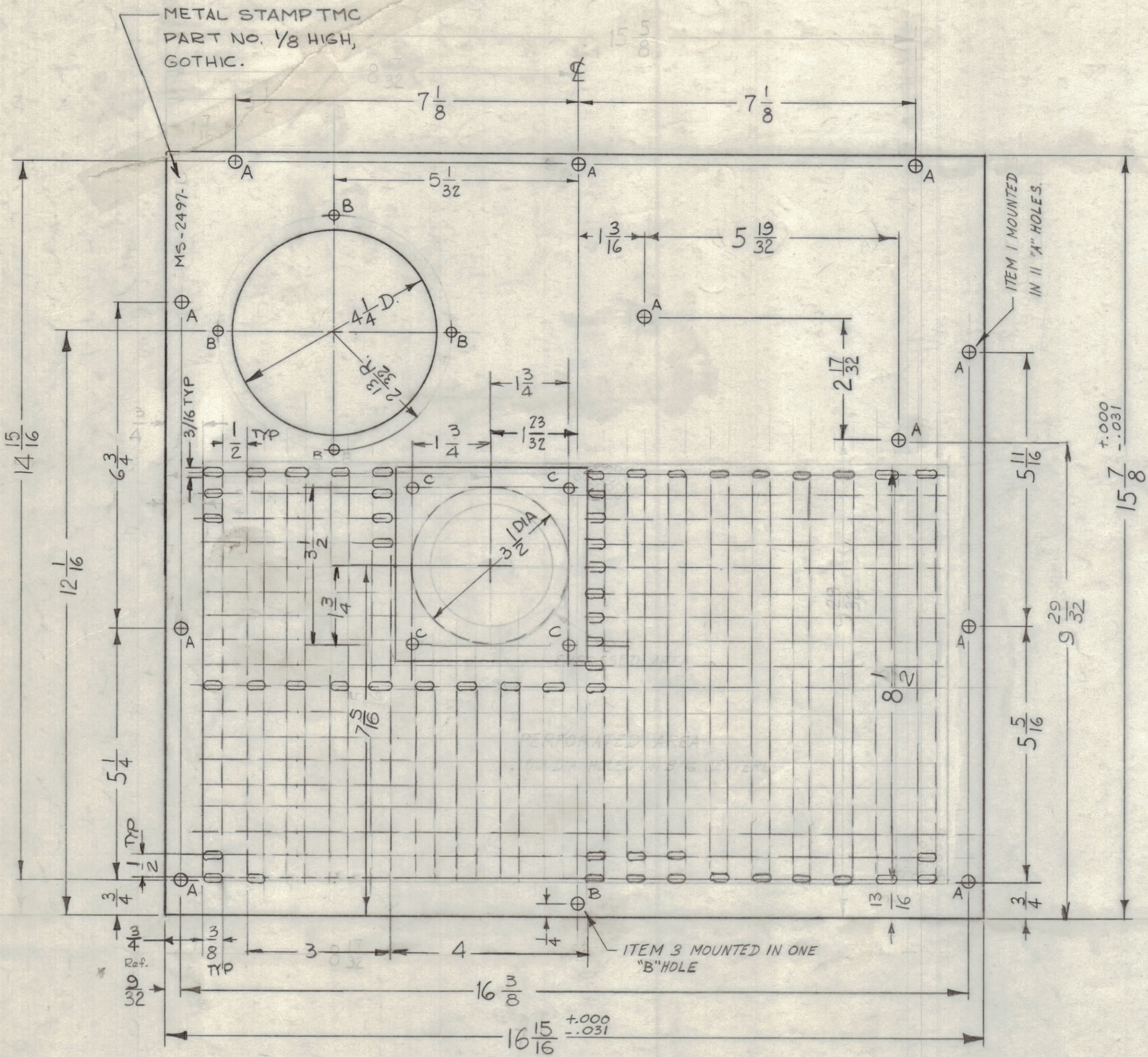


A - 1/4 DIA. 11 REQ.
 B - 3/16 DIA. 5 REQ.
 C - .128-.132 DIA 4 REQ'D



4	7	RI 100.125-42	RIVET BLIND	
1	6	MS 7108	COVER PLATE ADAPTER	
1	5	MS 7107	PLATE ADAPTER	
1	4	WA-131-2C	WASHER, SPRING	B
1	3	SC-141	CAPTIVE, SCREW	B
11	2	FS-109-3	RING, STUB	A
11	1	FS-110-1	STUD, SLOTTED	A

F		MODEL RFC-1 DELETED	10-3-90	GDL	
E	~	CHANGE PERFORATE AREA TO SLOTS DELETED EMBOSSED AREA - 3 1/2 DIA HOLES 4 C HOLES ADD ITEM 5, 6 & 9	3-22-63	22001	GDL 3-22-63 RB
D	BZ	MS-1775-15 REF. DELETED	5-9-63	8912	
C	D5	PERFORATIONS WERE 1/8 DIA	4-18-63	8835	
B	H3	(1) "B" HOLE WAS (1) "A" HOLE	3-21-63	8593	
A	C5	DIM. 16 3/8 WAS 16 1/2, 16 9/16 WAS 17 1/16	4-27-61	4788	

UNLESS OTHERWISE SPECIFIED
 DIMENSIONS ARE IN INCHES AND INCLUDE
 CHEMICALLY APPLIED OR PLATED FINISHES

DECIMALS: .X ± .05, .XX ± .01, .XXX ± .005
 FRACTIONS: ± 1/64, ANGLES: ± 0° 30'

TOLERANCES

OUR MARK
 QUALIFIED
 2-46

SYM		ZONE	DESCRIPTION	DATE	CH. NO.	DRAFTS	CHECKER	ENG. APP.
UNLESS OTHERWISE SPECIFIED: DIMENSIONS ARE IN INCHES				SCALE DO NOT SCALE				
TOLERANCES ON FRACTIONS ± 1/64 DECIMALS ± .005 ANGLES ± 1/2°				MAXIMUM ALLOWABLE TOLERANCES HAVE BEEN DETERMINED AND ANY DEVIATIONS WILL BE CAUSE FOR REJECTION. REMOVE ALL BURRS & SHARP EDGES				

1	RFC-1			12-21-60
1	RFB-1			12-21-60
REQ. PER UNIT	MODEL	SECTION	ASS'Y. NO.	DATE
				USED ON

REQ. ITEM	PART NO.	DESCRIPTION	SYMBOL
	.051	ALUMINUM	
5052-H32		THE TECHNICAL MATERIEL CORP. MAMARONECK, NEW YORK	
3404 YELL IRIDITE		COVER TOP, DRIVER	
FINISH & SPEC. NO.		DRAWN: M.A.F. CHECKED: J.C. Beale FINAL APPROVAL: E.P.M.	
ELEC. DES. APP.		MECH. DES. APP.	
SHEET		OF MS-2497	