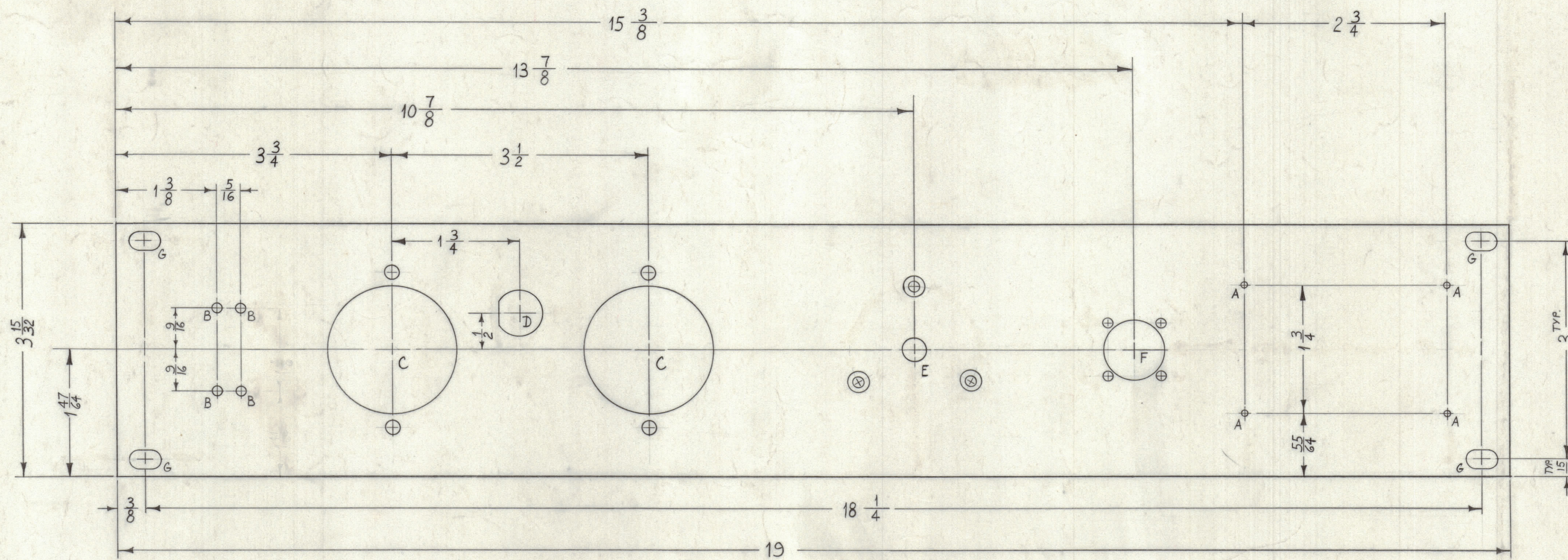


**NOTICE TO PERSONS RECEIVING THIS DRAWING**

THE TECHNICAL MATERIEL CORPORATION claims proprietary right in the material disclosed herein. This drawing is issued in confidence for engineering information only and may not be reproduced or used to manufacture anything shown herein without permission from THE TECHNICAL MATERIEL CORPORATION to the user. This drawing is loaned for mutual assistance and is subject to recall at any time.

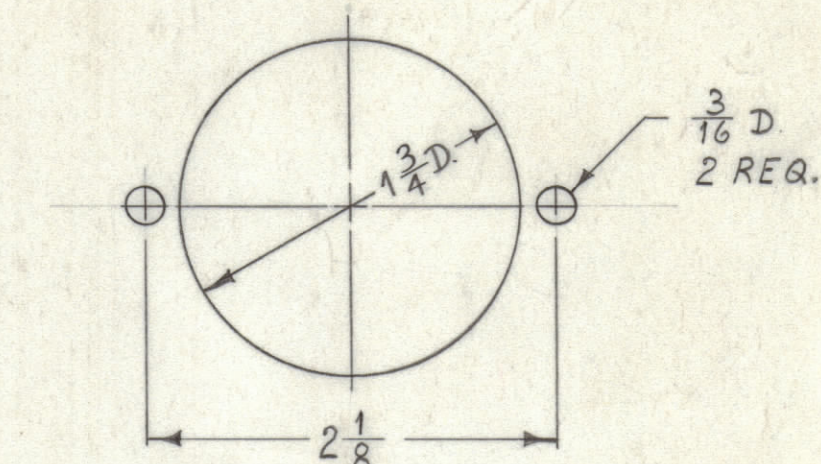
Property of:  
THE TECHNICAL MATERIEL CORPORATION  
MAMARONECK, NEW YORK



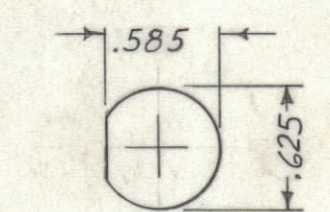
**MACHINING-**  
 1- LATERAL BOW OF PANEL MUST BE KEPT TO .031 TOLERANCE.  
 2- MILL ALL EDGES.  
 3- HOLES MUST BE DRILLED.  
 4- PANEL MUST BE FREE OF ALL MACHINING MARKS GOUGES & SCRATCHES.  
 IF NECESSARY SAND FRONT OF PANEL WITH NO. 120 BRIT SANDPAPER.

**FINISH-**  
 S404 YELLOW IRIDITE  
 S114 ZINC CHROMATE PRIMER FRONT &  
 S115 TMC SMOOTH GREY ENAMEL EDGES ONLY

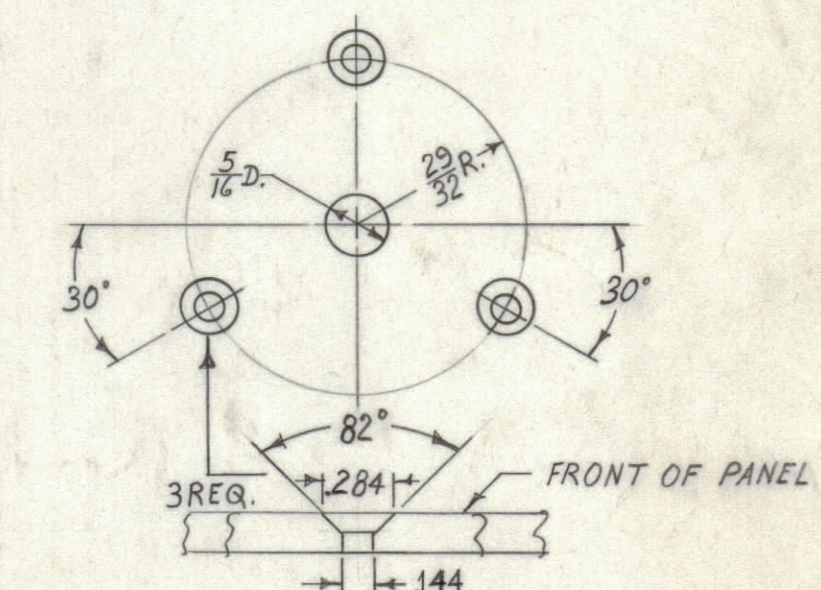
A-  $\frac{5}{64}$  DIA. 4 REQ.  
 B-  $\frac{1}{8}$  DIA. 4 REQ.



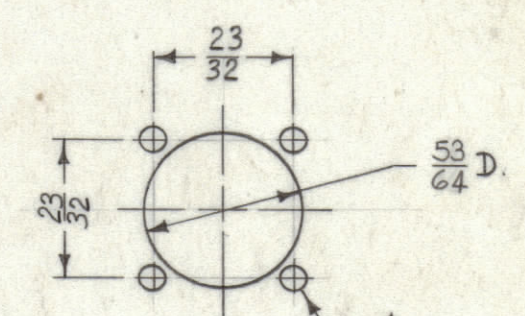
"C" DETAIL  
2 REQ.



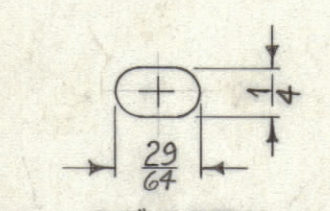
"D" DETAIL  
1 REQ.



"E" DETAIL  
1 REQ.



"F" DETAIL  
1 REQ.



"G" DETAIL  
4 REQ.

MS-2456

SYM	ZONE	DESCRIPTION	DATE	CH. NO.	DRAFTS	CHECKER	ENG. APP.
A	IC	On Detail Dim $\frac{53}{64}$ DIA. WAS $\frac{11}{16}$ DIA.	12-8-60	3672	RJ	JCB	

UNLESS OTHERWISE SPECIFIED:  
 DIMENSIONS ARE IN INCHES  
 TOLERANCES ON  
 FRACTIONS  $\pm 1/64$     DECIMALS  $\pm .005$     ANGLES  $\pm 1/2^\circ$

SCALE  
 MAXIMUM ALLOWABLE TOLERANCES HAVE BEEN DETERMINED AND ANY DEVIATIONS WILL BE CAUSE FOR REJECTION. REMOVE ALL BURRS & SHARP EDGES

UNLESS OTHERWISE SPECIFIED  
 DIMENSIONS ARE IN INCHES AND INCLUDE  
 CHEMICALLY APPLIED OR PLATED FINISHES

DECIMALS	FRACTIONS
$\pm .005$	$\pm 1/64$
$\pm .01$	ANGLES
$\pm .005$	$\pm 0^\circ 30'$

REQ. ITEM		PART NO.	DESCRIPTION	SYMBOL
1	APP 3	3/16	THE TECHNICAL MATERIEL CORP. MAMARONECK, NEW YORK	
MATERIAL		ALUMINUM	FRONT PANEL MACHINING	
DATE		10-25-60		
FINISH & SPEC. NO.		2024-T3		
ELEC. DES. APP.				
MECH. DES. APP.				
SHEET				
OF				

REF: LD-838 (4)

DEFIANCE NO. 1000