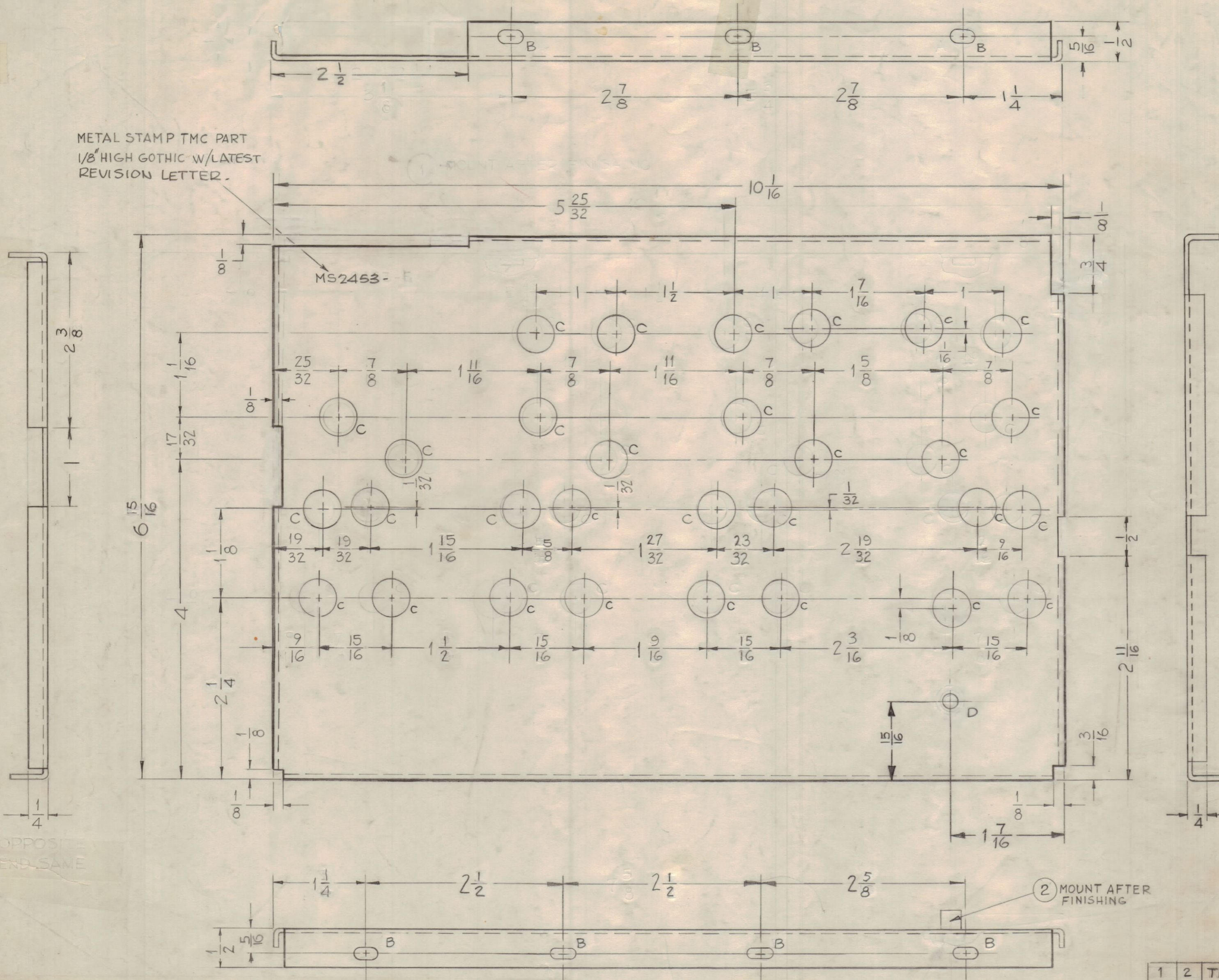


MS-2453 K

HOLES ~

- B - $\frac{11}{64} \times \frac{11}{32}$ SLOTS 7 Req.
- C - $\frac{1}{2}$ DIA. 30 Req.
- D - $\frac{3}{16}$ DIA. 1 Req.

METAL STAMP TMC PART
1/8" HIGH GOTHIC W/LATEST
REVISION LETTER.



UNLESS OTHERWISE SPECIFIED
1 ~ USE MATERIAL THICKNESS FOR
MAXIMUM RADIUS ON ALL BENDS.

NOTICE TO PERSONS RECEIVING THIS DRAWING

THE TECHNICAL MATERIEL CORPORATION claims
proprietary right in the material disclosed herein.
This drawing is issued in confidence for engineering
information only and may not be reproduced or used
to manufacture anything shown hereon without per-
mission from THE TECHNICAL MATERIEL CORPORA-
TION to the user. This drawing is loaned for military
assistance and is subject to recall at any time.

Property of:
THE TECHNICAL MATERIEL CORPORATION
MAMARONECK, NEW YORK

REF: LD-975 (4) FOR CHG-2 ONLY
REF: LD-866 (4) FOR CHG-1 ONLY

1	2	TE-108-1	STAND-OFF, RIVET TYPE	D
1	1		DELETED	
REQ. ITEM	PART NO.	DESCRIPTION	SYMBOL	
		.051 THICK	THE TECHNICAL MATERIEL CORP.	
		STOCK SIZE	MAMARONECK, NEW YORK	
		ALUMINUM	COVER, BOTTOM R.F.	
		MATERIAL		
		5052 - H-32		
		TYPE & TEMPER	John C. Biele	
			DRAWN	ELEC. DES. APP. MECH. DES. APP.
		HEAT TREAT. SPEC.	CHECKED	FINAL APPROVAL
		S404 - IRIDITE	MS 2453 K	
		FINISH & SPEC. NO.		

K	REVISED & UPDATED	1.16.68	18720	H.B.	FB	
J	"E" Holes were "B" Holes	2.15.67	17824	W.H.	FB	
H	DIM'S. REVISED	6/2/66	16324	C.H.	FB	
G	ON TOP VIEW, CUTOUT ON LIP WAS 2" LONG	3-12-63	8520	W.B.	FB	
SYM	DESCRIPTION	DATE	CH. NO.	DRAFTS	CHECKER	ENG. APP.
UNLESS OTHERWISE SPECIFIED DIMENSIONS ARE IN INCHES AND INCLUDE CHEMICALLY APPLIED OR PLATED FINISHES		SCALE		FULL		
DECIMALS X ± .05 XX ± .01 XXX ± .005	TOLERANCES	FRACTIONS ± 1/64 ANGLES ± 0° 30'	CODE			

1	CHG-2	7-12-61	
1	CHG-1	10-15-60	
REQ PER UNIT	MODEL	SECTION	ASSY. NO.

OPPOSITE
END SAME

2 MOUNT AFTER
FINISHING

2 MOUNT AFTER
FINISHING