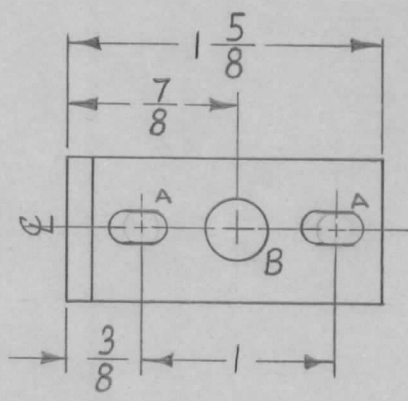
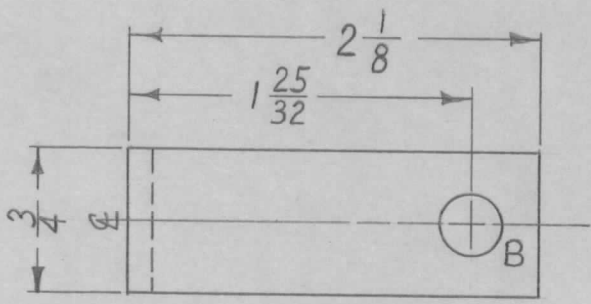
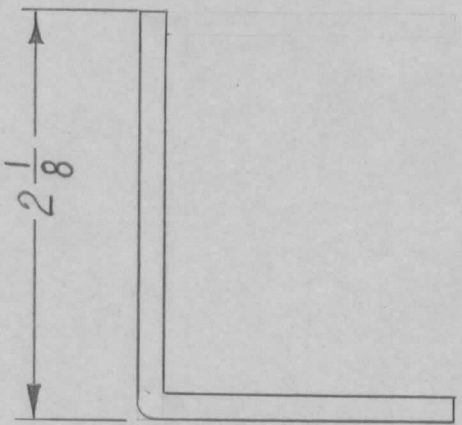


REQ. PER UNIT	USED ON			MS-2449	A
	MODEL	ASS'Y. NO.	DATE		
1	CHG-1	MF/RF SEC.	10-15-60		



A ~ $\frac{11}{64} \times \frac{11}{32}$ SLOT 2 REQ.
 B ~ $\frac{5}{16}$ DIA. 2 REQ.



NOTE:
 USE MATERIAL THICKNESS FOR MAX. RADIUS ON BEND, UNLESS OTHERWISE SPECIFIED.

				REQ. ITEM	PART NO.		DESCRIPTION			SYMBOL
					1/8		THE TECHNICAL MATERIEL CORP.			
					STOCK SIZE		MAMARONECK, NEW YORK			
					ALUMINUM		SHAFT SUPPORT BRACKET			
					MATERIAL					
					5052-H32					
					TYPE & TEMPER		DRAWN			
					S404 YELL. IRIDITE		CHECKED			
					FINISH & SPEC. NO.		FINAL APPROVAL			
							MS-2449			A
							ELEC. DES. APP			
							MECH. DES. APP			
TOLERANCES				SCALE: FULL						
DEC. DIM. ±				MAXIMUM ALLOWABLE TOLERANCES HAVE BEEN DETERMINED AND ANY DEVIATIONS WILL BE CAUSE FOR REJECTION.						
FRAC. DIM. ± 1/64				REMOVE ALL BURRS AND SHARP EDGES						
ANGULAR DIM. ±										
ISSUE	ITEM	CHANGED FROM	DATE	CH. NO.	DRAFTS	CHECKER	ENG. APP.			
A	1	"A" Slots were $\frac{11}{64}$ D. HOLES	11-23-60	3540	RU	JCS				