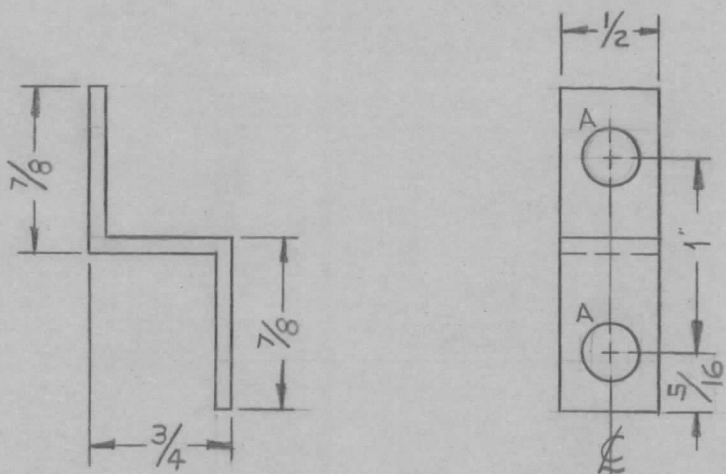


REQ. PER. UNIT	USED ON			MS-2444	B
	MODEL	ASSY. NO.	DATE		
1	40K	AX-275	10-8-60		

A- $\frac{9}{32}$ DIA. - 1 REQ - 2 REQ
 B- $\frac{1}{4} \times \frac{1}{32}$ SLOT - 1 REQ



FINISH

S 245 SILVER PLATE.0003 THK
 S 423 SILVER KOTE IRIDITE

REQ.	ITEM	PART NO.	DESCRIPTION				SYMBOL
		$\frac{1}{16}$	THE TECHNICAL MATERIEL CORP.				
		STOCK SIZE	MAMARONECK, NEW YORK				
B	1	B SLOT CHANGED TO A HOLE FINISH NOTE ADDED.	8-22-62	7101	SG	<i>file</i>	<i>MB</i>
A	1	STOCK SIZE WAS .084	10/14/60	3181	<i>file</i>	<i>MB</i>	
ISSUE	ITEM	CHANGED FROM	DATE	CH. NO.	DRAFTS	CHECKER	ENG. APP.
TOLERANCES			SCALE: FULL				
DEC. DIM. \pm			MAXIMUM ALLOWABLE TOLERANCES HAVE BEEN DETERMINED AND ANY DEVIATIONS WILL BE CAUSE FOR REJECTION. REMOVE ALL BURRS AND SHARP EDGES				
FRAC. DIM. $\pm \frac{1}{64}$							
ANGULAR DIM. \pm							
TYPE & TEMPER		HEAT TREAT. SPEC.	DRAWN		CHECKED	FINAL APPROVAL	
SEE NOTE			<i>Ruzzo</i>		<i>file</i>	<i>AMB</i>	
FINISH & SPEC. NO.		ELEC. DES. APP	MECH. DES. APP		MS-2444 B		