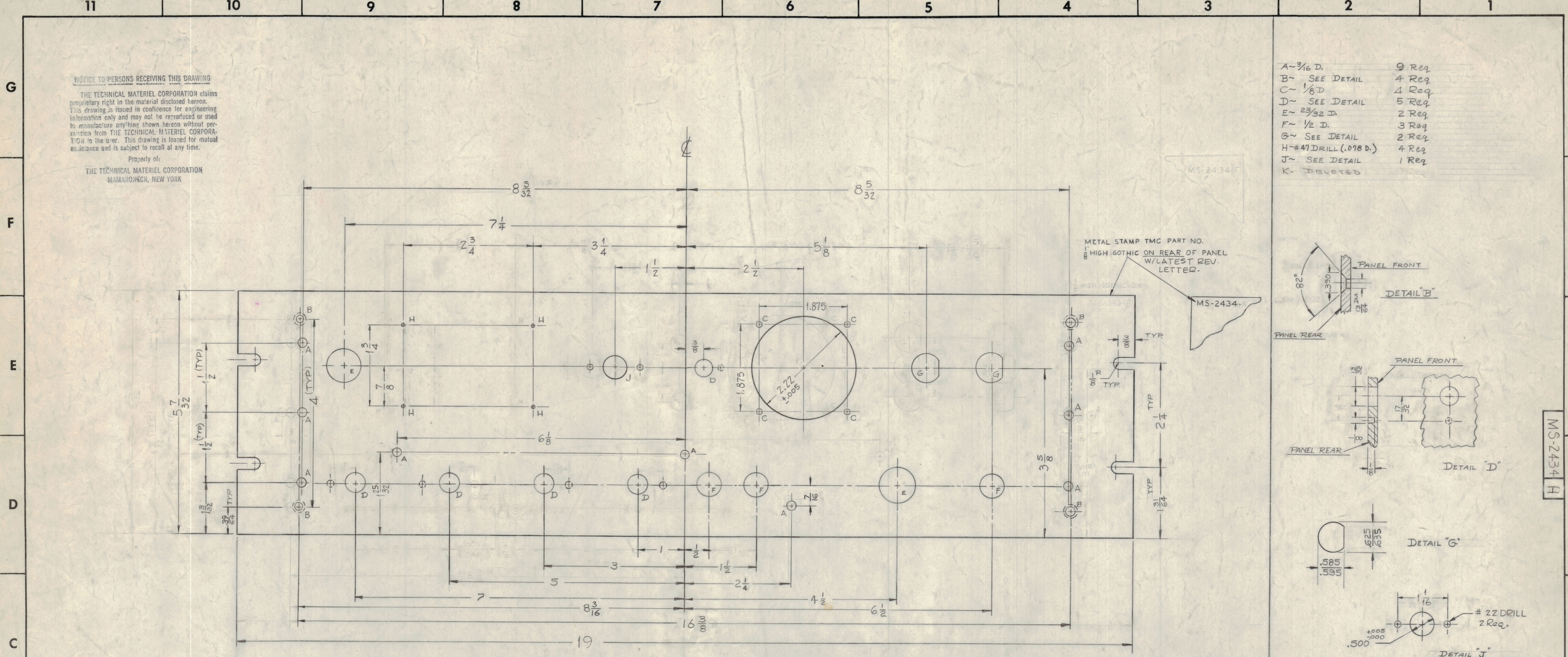


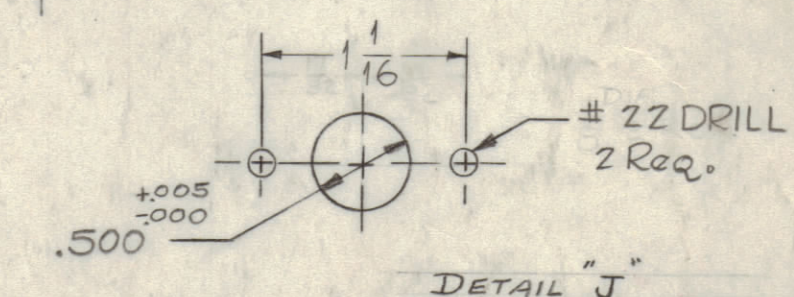
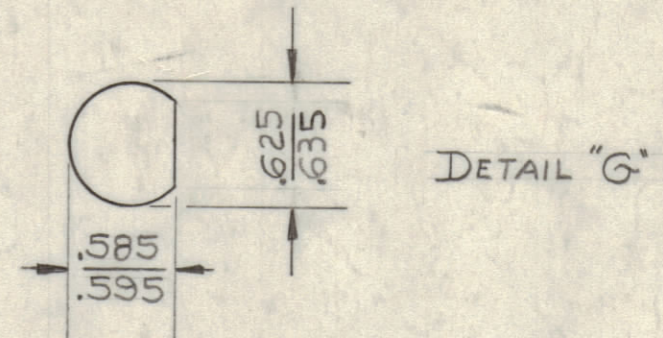
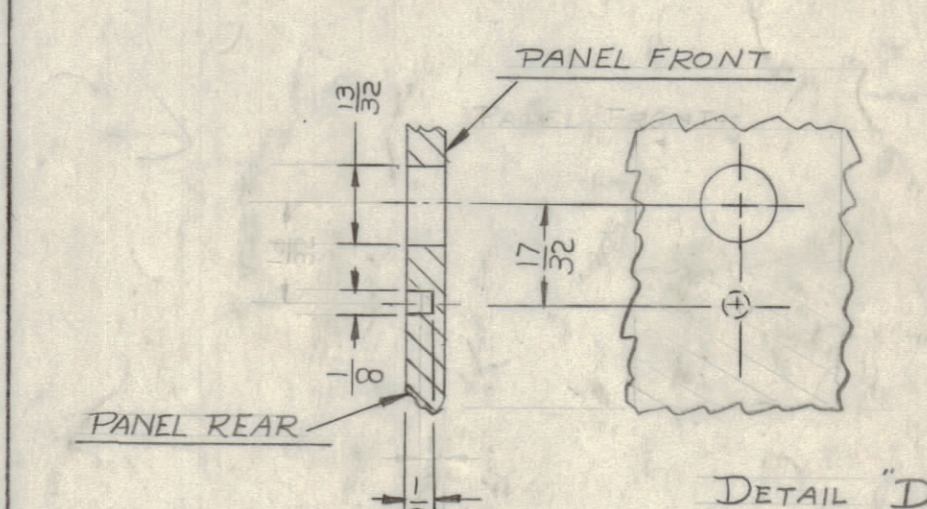
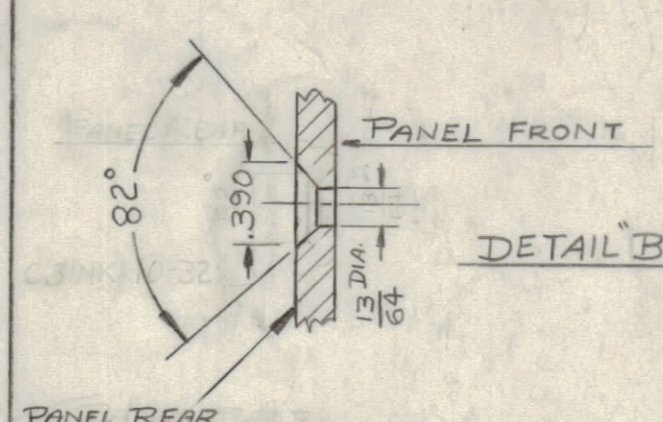
NOTICE TO PERSONS RECEIVING THIS DRAWING

THE TECHNICAL MATERIEL CORPORATION claims proprietary right in the material disclosed herein. This drawing is issued in confidence for engineering information only and may not be reproduced or used to manufacture anything shown herein without permission from THE TECHNICAL MATERIEL CORPORATION to the user. This drawing is loaned for mutual assistance and is subject to recall at any time.

Property of:
THE TECHNICAL MATERIEL CORPORATION
MAMARONECK, NEW YORK



A	3/16 D.	9 Req
B	SEE DETAIL	4 Req
C	1/8 D	1 Req
D	SEE DETAIL	5 Req
E	23/32 D	2 Req
F	1/2 D.	3 Req
G	SEE DETAIL	2 Req
H	#47 DRILL (.018 D.)	4 Req
J	SEE DETAIL	1 Req
K	DELETED	2 Req



MACHINING NOTES:
1. MILL ALL EDGES.
2. HOLE MUST BE DRILLED.
3. LATERAL BOW OF PANEL MUST BE KEPT TO .031 TOL.
4. PANEL MUST BE FREE OF ALL MACHINING MARKS, GOUGES & SCRATCHES, IF NECESSARY SAND FRONT OF PANEL WITH NO. 120 GRIT SANDPAPER.

FINISH:
S404 YELLOW IRIDITE
S114 ZINC CHROMATE PRIMER } FRONT
S115 T.M.C. SMOOTH GRAY ENAMEL } EDGES ONLY

ISSUE	ZONE	DESCRIPTION	DATE	CH. NO.	DRAFTS	CHECKER	ENG. APP.
H	D9	1 HOLE 1/8 DIA RELOCATED 180°	11-13-62	1142	AV	AV	
G	G2	(4) "H" HOLES WERE #50 DRILL	11-13-62	1147	AV	AV	
F	F10.4	(2) "A" HOLES DELETED	10/26/60	5767	AV	AV	
E	E10.4	DIM 9/16 WAS 7/16 (2 PLACES)	6-27-61	5148	SDL	RU	
D	D10.4	(2) "A" HOLES ADDED	6-27-61	5113	RU	AV	
C	C10.3	7 @ Holes Relocated	1-17-61	3913	RU	AV	
B	B10.6	DIM 1-25/32 WAS 1-27/32, 7/16 WAS 5/16	12-2-60	3652	RU	AV	
A	A1	(6) HOLES RELOCATED	11-7-60	3440	AV	AV	
A	A1	"K" DELETED (CHECK FOR 3-48)					

SCALE: FULL (DO NOT SCALE)
TOLERANCES: DEC. DIM. ± .002, FRACTIONAL DIM. ± 1/64, ANGULAR DIM. ± 1/2°
MAXIMUM ALLOWABLE TOLERANCES HAVE BEEN DETERMINED AND ANY DEVIATIONS WILL BE CAUSE FOR REJECTION. REMOVE ALL BURRS AND SHARP EDGES.

REQ	ITEM	PART NO.	DESCRIPTION	SYMBOL
		3/16	STOCK SIZE	
		ALUMINUM	MATERIAL	
		2024-T3		
			TYPE & TEMPER	
			HEAT TREAT. SPEC.	
			FINISH & SPEC. NO.	

REQ	ITEM	PART NO.	DESCRIPTION	SYMBOL
			THE TECHNICAL MATERIEL CORP. MAMARONECK, NEW YORK	
			MACHINING, FRONT PANEL	
			REF. LD-781	
			DATE: 9/16/60	
			CHECKED: [Signature]	
			FINAL APPROVAL: [Signature]	
			MS-2434	H