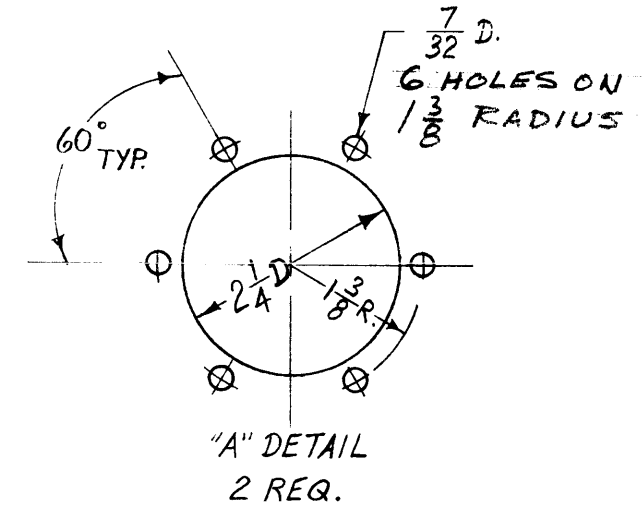
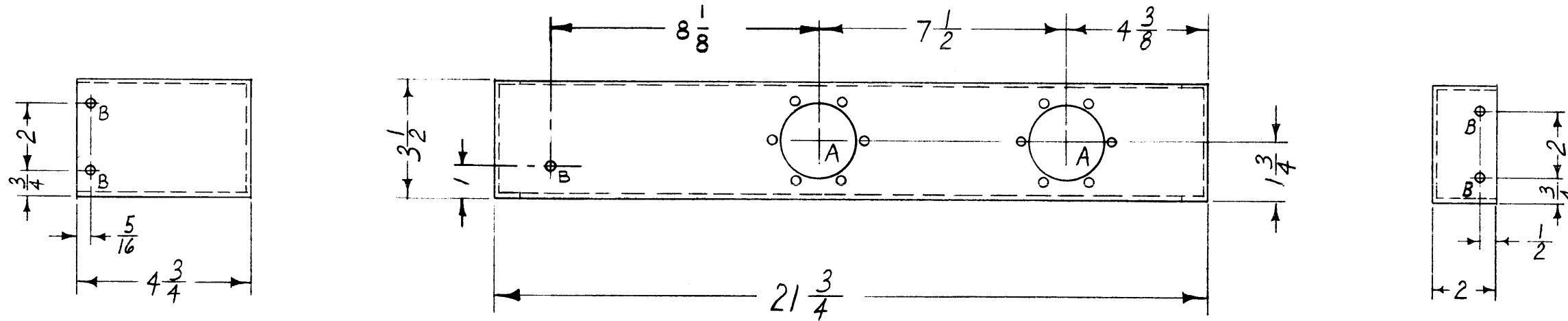
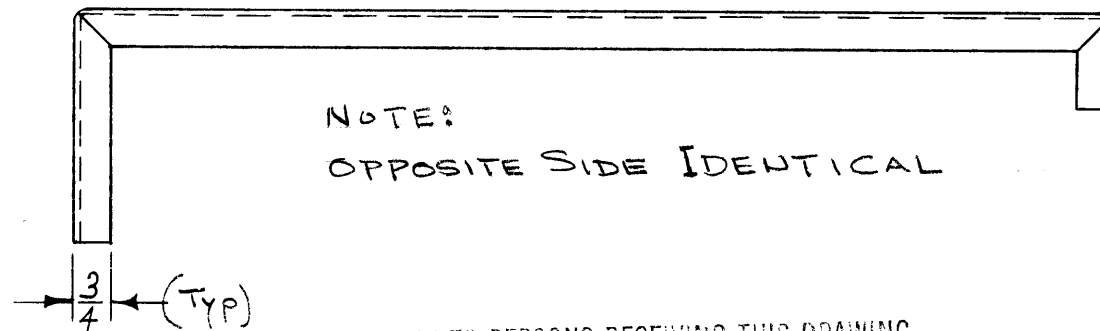


MS-2423

A- SEE DETAIL 2 REQ.
 B- $\frac{3}{16}$ DIA. 5 REQ.



NOTE:
 OPPOSITE SIDE IDENTICAL



NOTICE TO PERSONS RECEIVING THIS DRAWING

THE TECHNICAL MATERIEL CORPORATION claims proprietary right in the material disclosed hereon. This drawing is issued in confidence for engineering information only and may not be reproduced or used to manufacture anything shown hereon without permission from THE TECHNICAL MATERIEL CORPORATION to the user. This drawing is loaned for mutual assistance and is subject to recall at any time.

Property of:
 THE TECHNICAL MATERIEL CORPORATION
 MAMARONECK, NEW YORK

USE MATERIAL THICKNESS FOR MAX RADIUS
 ON ALL BENDS UNLESS OTHERWISE SPECIFIED

REF: LD-902 (1)

ISSUE	ITEM	CHANGED FROM	DATE	CH. NO.	DRAFTS	CHECKER	ENG. APP.
TOLERANCES			SCALE: $\frac{1}{16}$				
DEC. DIM. \pm			MAXIMUM ALLOWABLE TOLERANCES HAVE BEEN DETERMINED AND ANY DEVIATIONS WILL BE CAUSE FOR REJECTION. REMOVE ALL BURRS AND SHARP EDGES				
FRAC. DIM. \pm $\frac{1}{64}$							
ANGULAR DIM. \pm							

REQ. PER UNIT	MODEL	PROJECT NO.	ASS'Y. NO.	DATE
1	ACU			9-16-60
USED ON				

REQ. ITEM	PART NO.	DESCRIPTION	SYMBOL
	1/8	THE TECHNICAL MATERIEL CORP. MAMARONECK, NEW YORK	
	STOCK SIZE		
	ALUMINUM	SUPPORT CAPACITOR	
	MATERIAL		
5052-H32			
TYPE & TEMPER	HEAT TREAT. SPEC.	DRAWN	CHECKED
S404 YELL. IRIDITE		aa	
FINISH & SPEC. NO.	ELEC. DES. APP.	MECH. DES. APP.	
			MS-2423