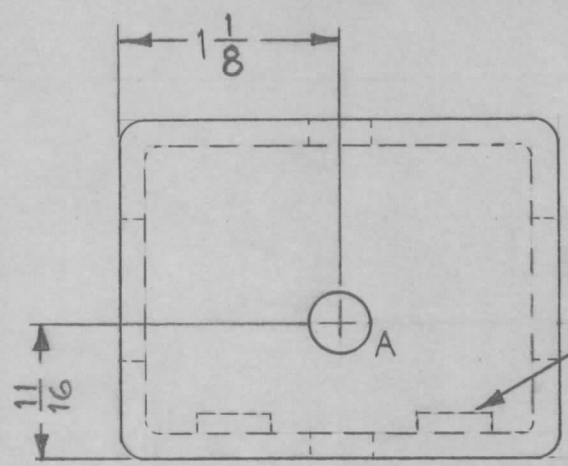


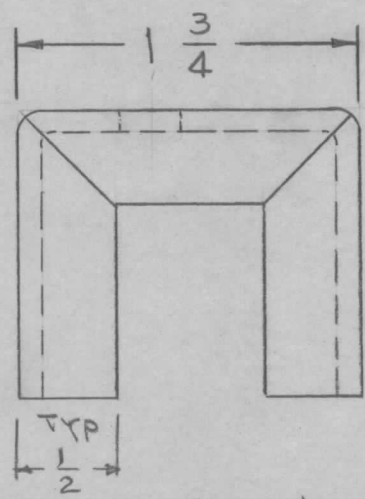
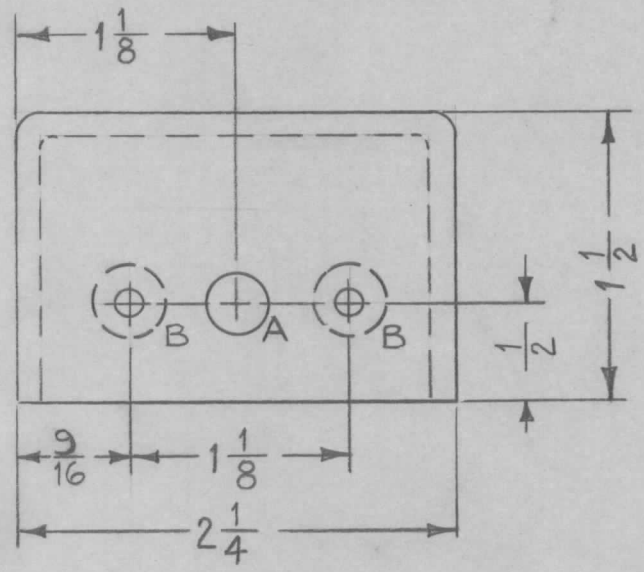
REQ. PER. UNIT	USED ON			MS-2422
	MODEL	ASS'Y. NO.	DATE	
2	ACU		4-17-61	

A ~ $\frac{5}{16}$ DIA. 3 REQ.
 B ~ .221-.224 DIA. 2 REQ.

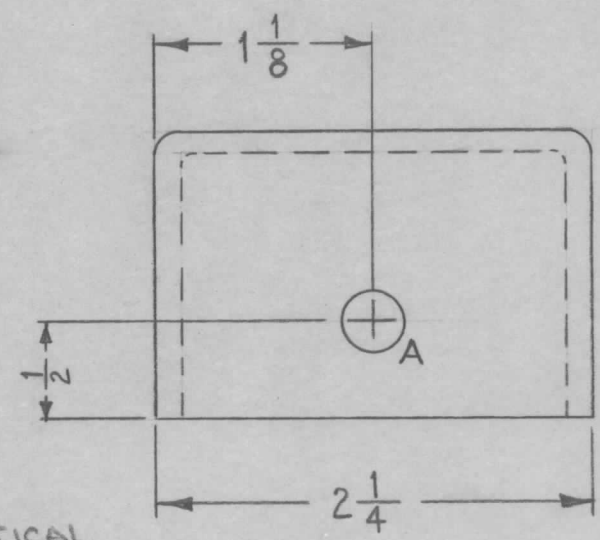


1 MOUNT ITEM 1 IN ALL "B" HOLES AS SHOWN AFTER FINISHING.

USE MATERIAL THICKNESS FOR MAX. RADIUS ON ALL BENDS UNLESS OTHERWISE SPECIFIED



OPPOSITE SIDE IDENTICAL



2	1	NT-129-832-4	NUT, ROUND, SWAGE TYPE		
REQ.	ITEM	PART NO.	DESCRIPTION		SYMBOL
		1/8	THE TECHNICAL MATERIEL CORP.		
		STOCK SIZE	MAMARONECK, NEW YORK		
		ALUMINUM	BRACKET, GEAR SWITCH		
		MATERIAL			
ISSUE	ITEM	CHANGED FROM	DATE	CH. NO.	DRAFTS
					CHECKER
					ENG. APP.
TOLERANCES			SCALE: FULL (DO NOT SCALE)		
DEC. DIM. ±			MAXIMUM ALLOWABLE TOLERANCES HAVE BEEN DETERMINED AND ANY DEVIATIONS WILL BE CAUSE FOR REJECTION.		
FRAC. DIM. ± 1/64			REMOVE ALL BURRS AND SHARP EDGES		
ANGULAR DIM. ±					
5052-H32		HEAT TREAT. SPEC.		W. A. F.	H. O.
S404 YELL. IRIDITE		FINISH & SPEC. NO.		DRAWN	CHECKED
		ELEC. DES. APP		MECH. DES. APP	MS-2422