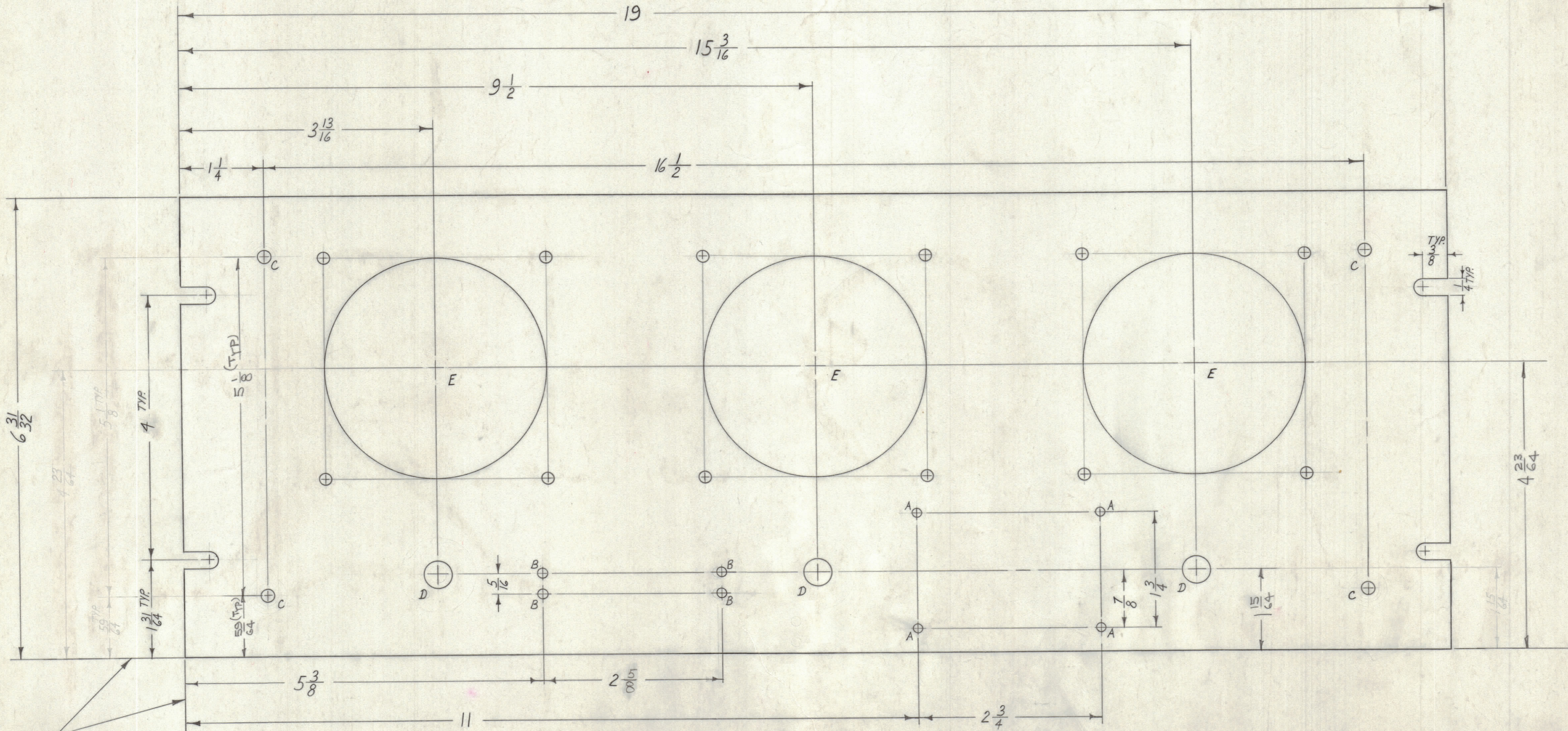
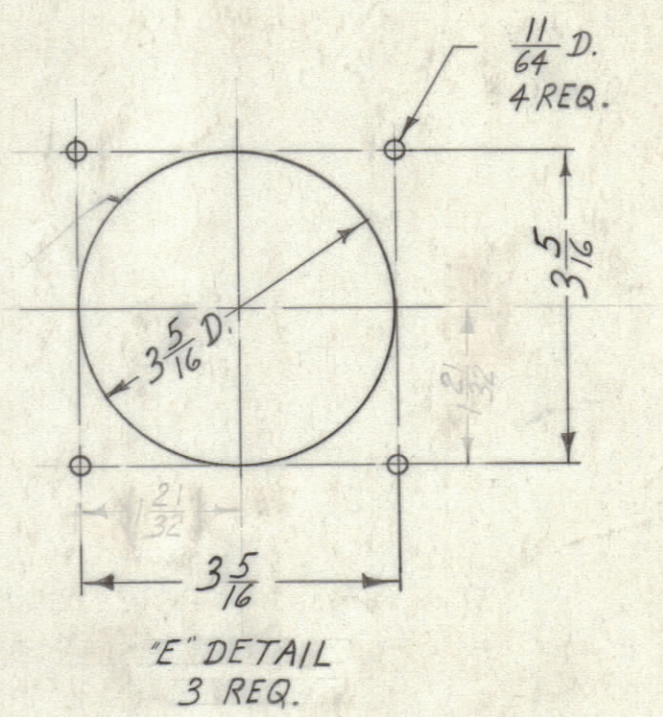


NOTICE TO PERSONS RECEIVING THIS DRAWING
 THE TECHNICAL MATERIEL CORPORATION claims proprietary right in the material disclosed herein. This drawing is issued in confidence for engineering information only and may not be reproduced or used to manufacture anything shown hereon without permission from THE TECHNICAL MATERIEL CORPORATION to the user. This drawing is loaned for mutual assistance and is subject to recall at any time.

Property of:
 THE TECHNICAL MATERIEL CORPORATION
 MAMARONECK, NEW YORK

- A - #47 DRILL 4 REQ.
- B - $\frac{9}{64}$ DIA. 4 "
- C - $\frac{3}{16}$ DIA. 4 "
- D - $\frac{13}{32}$ DIA. 3 "
- E - SEE DETAIL 3 "



LOCATING BASE LINE

MACHINING -
 1-LATERAL BOW OF PANEL MUST BE KEPT TO .031 TOLERANCE.
 2-MILL ALL EDGES.
 3-HOLES MUST BE DRILLED.
 4-PANEL MUST BE FREE OF ALL MACHINING MARKS, GOUGES & SCRATCHES.
 IF NECESSARY SAND FRONT OF PANEL WITH NO.120 GRIT SANDPAPER.

FINISH -
 S404 YELLOW IRIDITE
 S114 ZINC CHROMATE PRIMER } FRONT &
 S115 TMC SMOOTH GREY ENAMEL } EDGES ONLY.

REF: LD776 SH.2 FRONT PANEL STAMPING. (A)
 REF: LD776 SH.1 FRONT PANEL ENGRAVING. (A)

ISSUE	ZONE	DESCRIPTION	DATE	CH. NO.	DRAFTS	CHECKER	ENG. APP.
A		DWG. WAS OBSOLETE LD777 REF. DELE.	12-11-56	32			
TOLERANCES			SCALE: FULL				
DEC. DIM. ± 1/64			MAXIMUM ALLOWABLE TOLERANCES HAVE BEEN DETERMINED AND ANY DEVIATIONS WILL BE CAUSE FOR REJECTION.				
ANGULAR DIM. ±			REMOVE ALL BURRS AND SHARP EDGES				

REQ. ITEM	PART NO.	DESCRIPTION	SYMBOL
1	3/16	THE TECHNICAL MATERIEL CORP. MAMARONECK, NEW YORK	
	ALUMINUM	FRONT PANEL MACHINING.	
	2024-T3		
	LSP-8		
		9-17-60	
		DATE	
		HEAT TREAT. SPEC.	
		SEE NOTE	
		FINISH & SPEC. NO.	

MS-2418 A

MS-2418 A