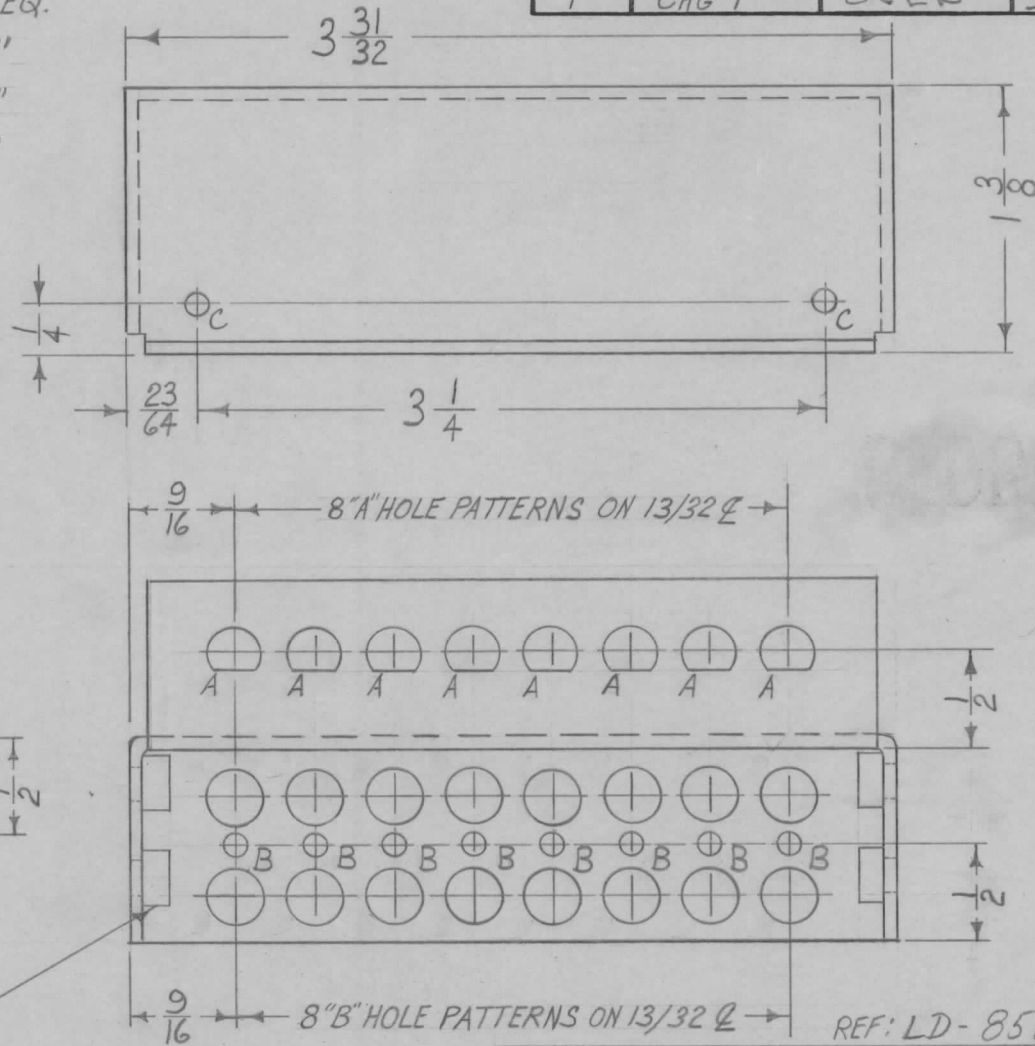
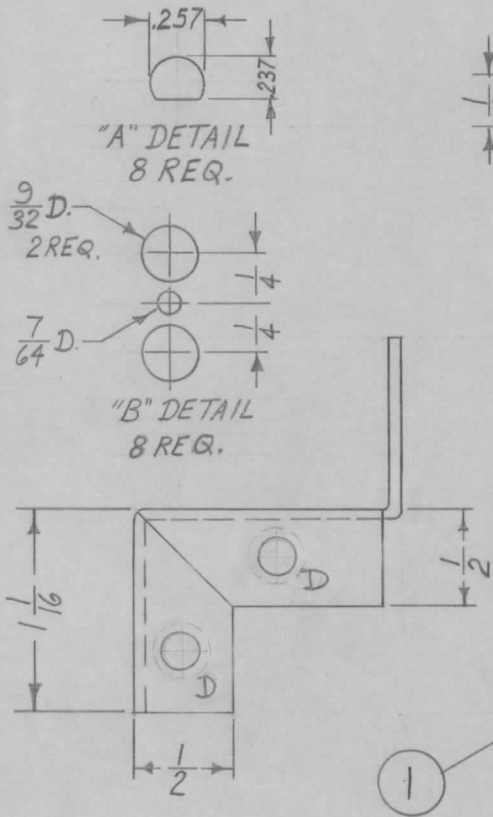


A- SEE DETAIL 8 REQ.
 B- SEE DETAIL 8."
 C- $\frac{7}{64}$ DIA. 2"
 D-.161-.164 DIA. 4"

FOR NT-129-440-4.



NOTE:
 USE MATERIAL THICKNESS
 FOR MAX. RADIUS ON ALL
 BENDS UNLESS OTHERWISE
 SPECIFIED.
 MOUNT NT'S AFTER
 FINISHING.

OPPOSITE
 SIDE
 IDENTICAL

REF: LD-858-(1)

REQ.	ITEM	PART NO.	DESCRIPTION				SYMBOL
4	1	NT-129-440-4	NUT, ROUND, SWAGE TYPE				
C			REINSTATED AS PER REV. A				
B	1		OBSOLETE REDRAWN ON 852				
A	1		7/8 DIM. WAS 15/16				
ISSUE	ITEM	CHANGED FROM	DATE	CH. NO.	DRAFTS	CHECKER	ENG. APP.
TOLERANCES			SCALE: FULL				
DEC. DIM. ±			MAXIMUM ALLOWABLE TOLERANCES HAVE BEEN DETERMINED AND ANY DEVIATIONS WILL BE CAUSE FOR REJECTION. REMOVE ALL BURRS AND SHARP EDGES				
FRAC. DIM. ± 1/64							
ANGULAR DIM. ±							
5052-H32		TYPE & TEMPER		HEATTREAT. SPEC.		DRAWN	
S404 VELL. IRIDITE		FINISH & SPEC. NO.		ELEC. DES. APP		MECH. DES. APP	
THE TECHNICAL MATERIEL CORP.			MAMARONECK, NEW YORK				
BRACKET, XTAL & TRIMMER			DRAWN: S.D.				
			CHECKED: [Signature]				
			FINAL APPROVAL: [Signature]				
			MS-2410				
			C				

REQ. PER. UNIT	USED ON		
	MODEL	ASSY. NO.	DATE
1	CHG-1	OVEN	9-13-60

MS-2410 C