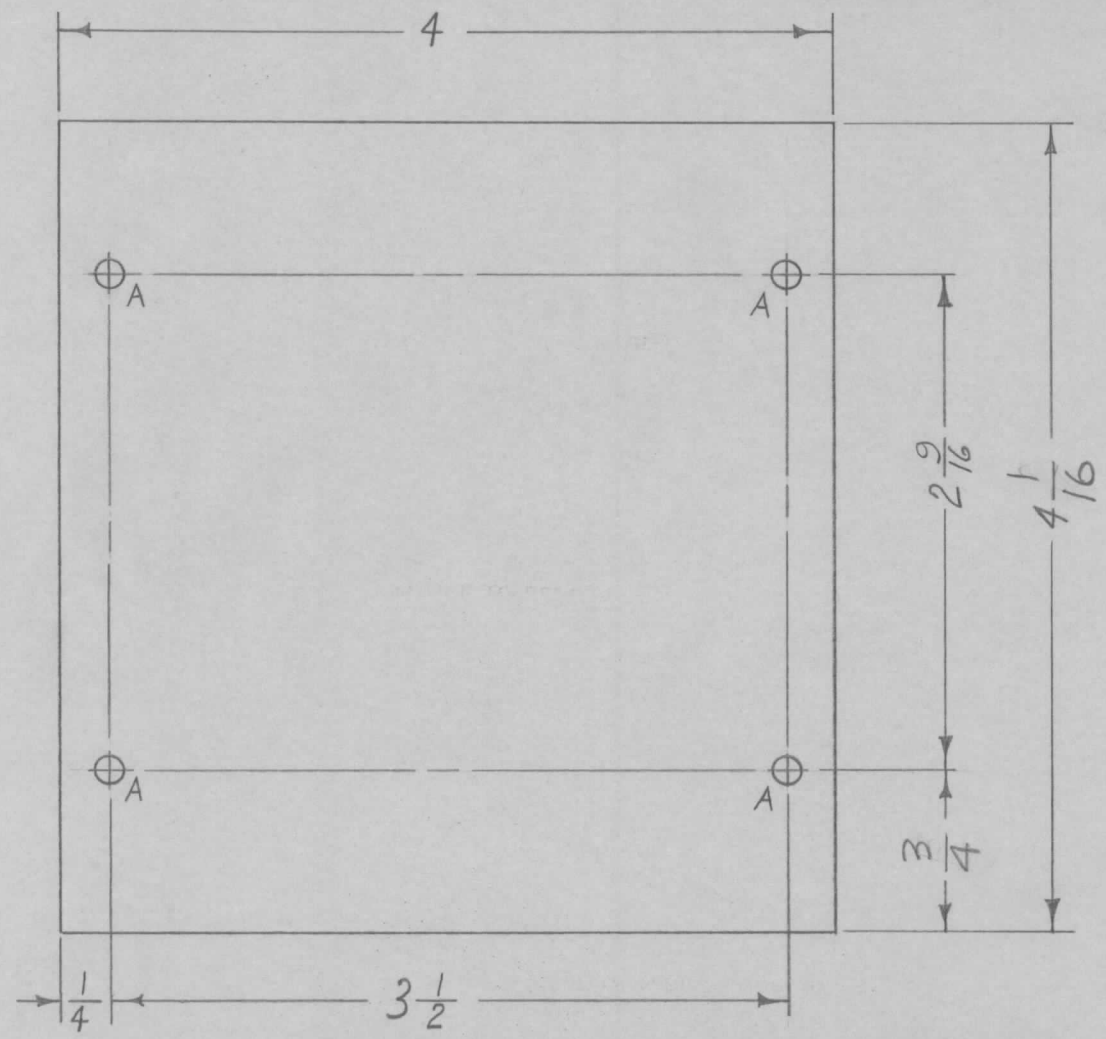


REQ. PER. UNIT	USED ON			MS-2407	A
	MODEL	ASS'Y. NO.	DATE		
1	CHG-1	OVEN	9-14-60		



A - $\frac{11}{64}$ DIA. 4 REQ.

NOTICE TO PERSONS RECEIVING THIS DRAWING

THE TECHNICAL MATERIEL CORPORATION claims proprietary right in the material disclosed hereon. This drawing is issued in confidence for engineering information only and may not be reproduced or used to manufacture anything shown hereon without permission from THE TECHNICAL MATERIEL CORPORATION to the user. This drawing is loaned for mutual assistance and is subject to recall at any time.

Property of:
THE TECHNICAL MATERIEL CORPORATION
MAMARONECK, NEW YORK

ISSUE	ITEM	CHANGED FROM	DATE	CH. NO.	DRAFTS	CHECKER	ENG. APP.	REQ. ITEM	PART NO.	DESCRIPTION	SYMBOL			
									.064	THE TECHNICAL MATERIEL CORP. MAMARONECK, NEW YORK	OVEN SHELL, BOTTOM COVER			
									ALUMINUM					
									MATERIAL					
									5052-H32					
									TYPE & TEMPER	HEATTREAT. SPEC.	DRAWN	CHECKED	FINAL APPROVAL	
									S404 YELL. IRIDITE		S.D.		MS-2407	A
									FINISH & SPEC. NO.	ELEC. DES. APP	MECH. DES. APP			
TOLERANCES			SCALE: FULL											
DEC. DIM. ±			MAXIMUM ALLOWABLE TOLERANCES HAVE BEEN DETERMINED AND ANY DEVIATIONS WILL BE CAUSE FOR REJECTION. REMOVE ALL BURRS AND SHARP EDGES											
FRAC. DIM. ± 1/64														
ANGULAR DIM. ±														

A 2
1
A Holes were 9/64 DIA.
DIM 3/4 WAS 5 3/16, 4 1/16 WAS 4 3/16

11-22-60 3540 DM JCB