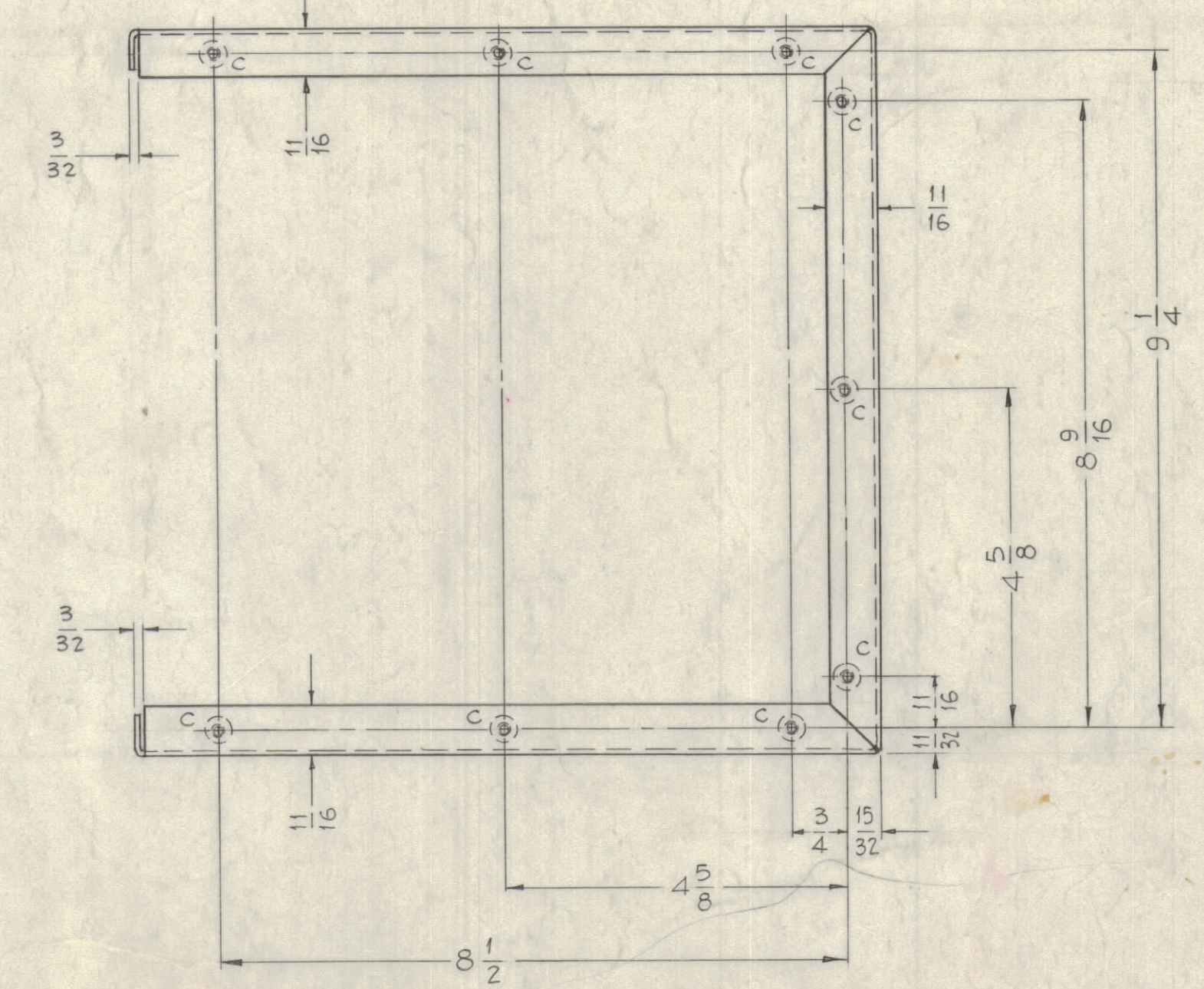
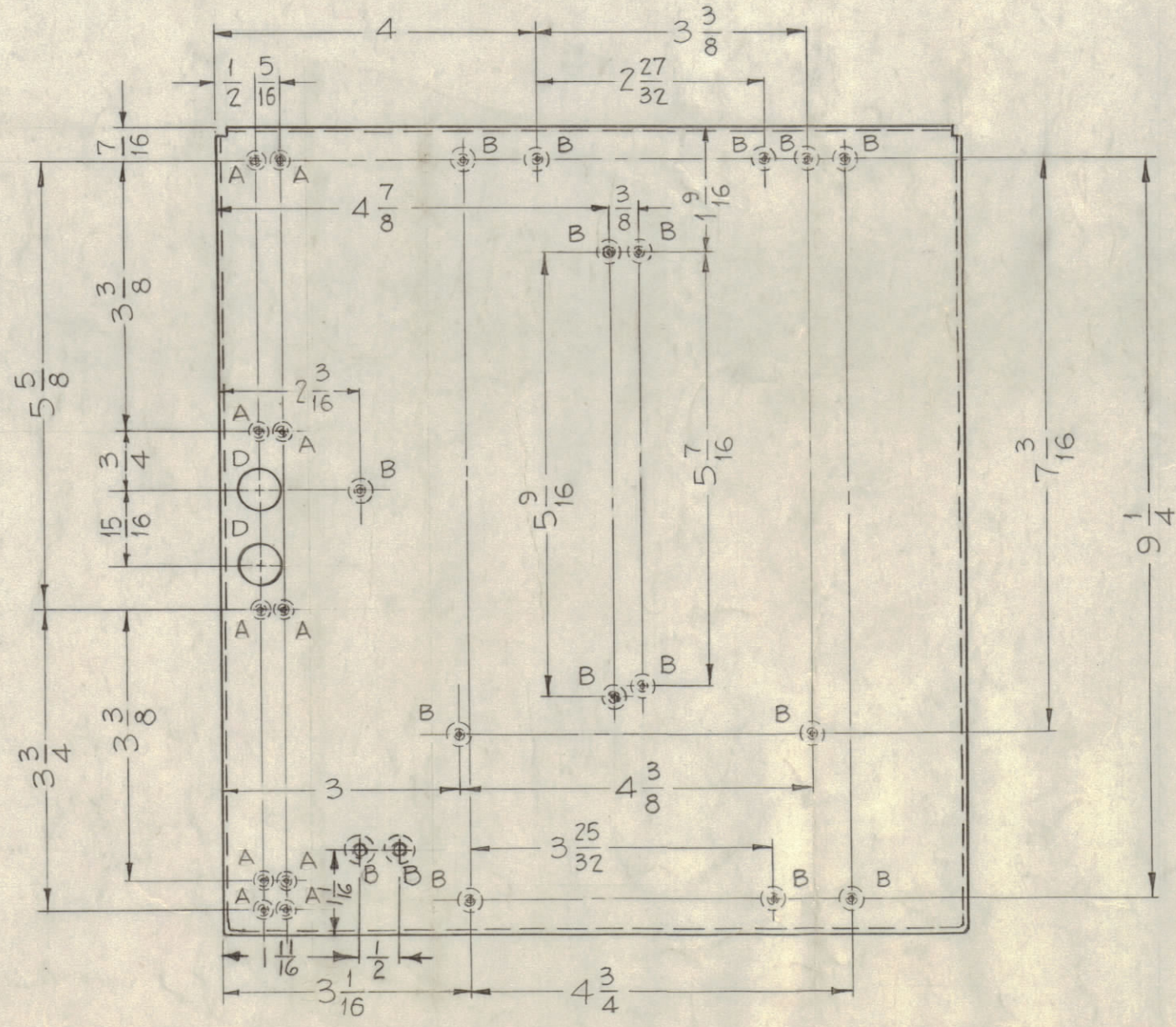
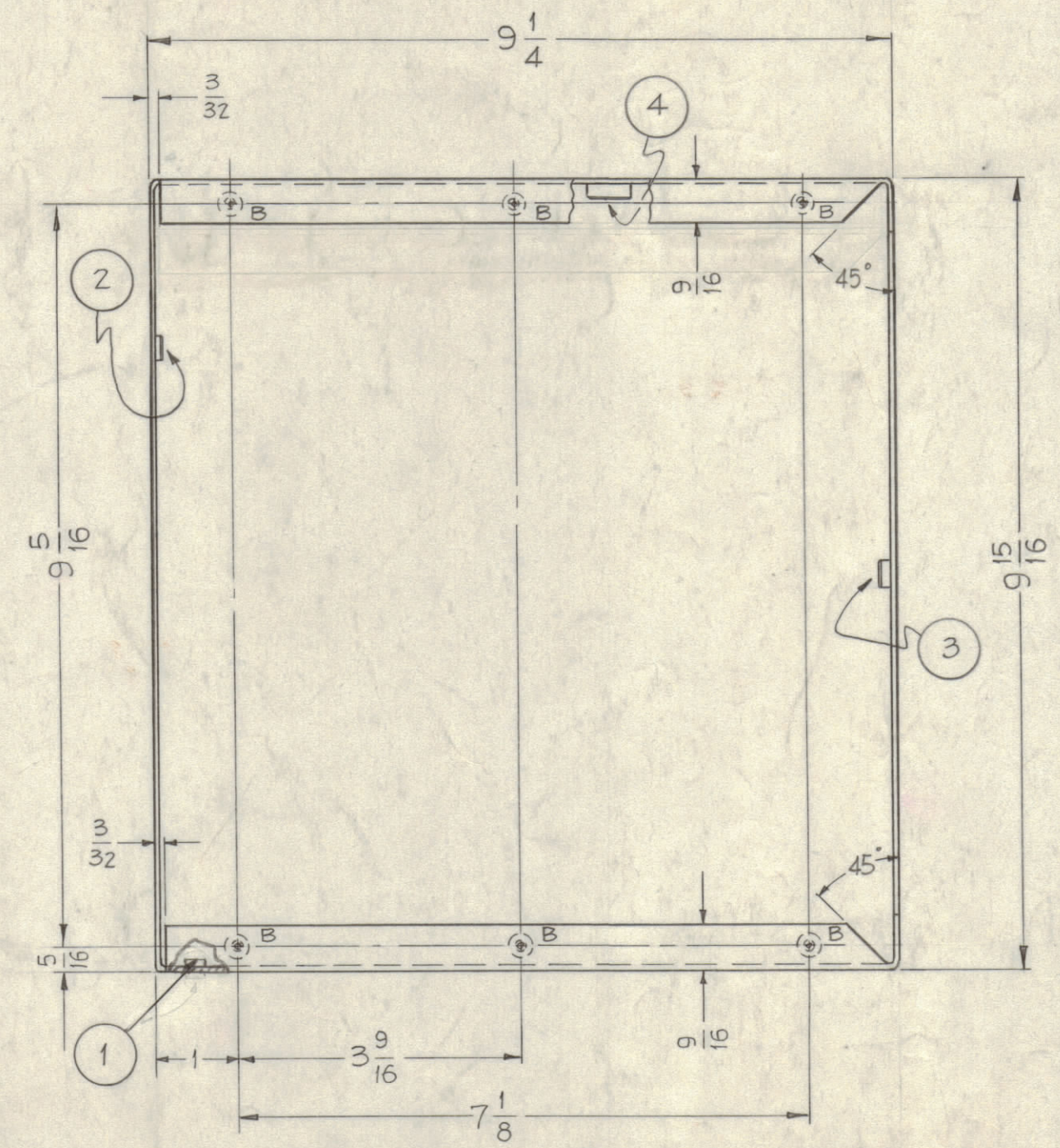
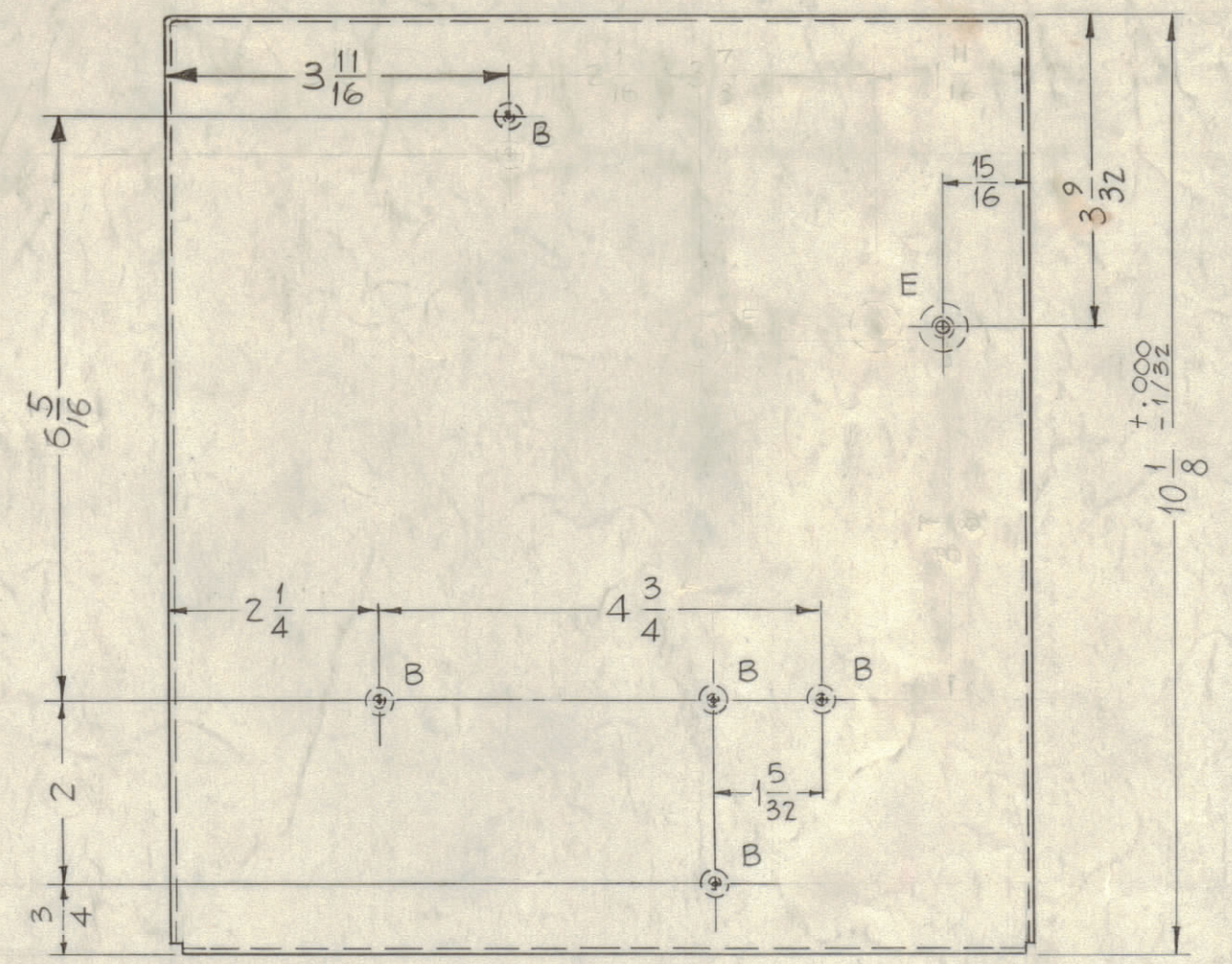
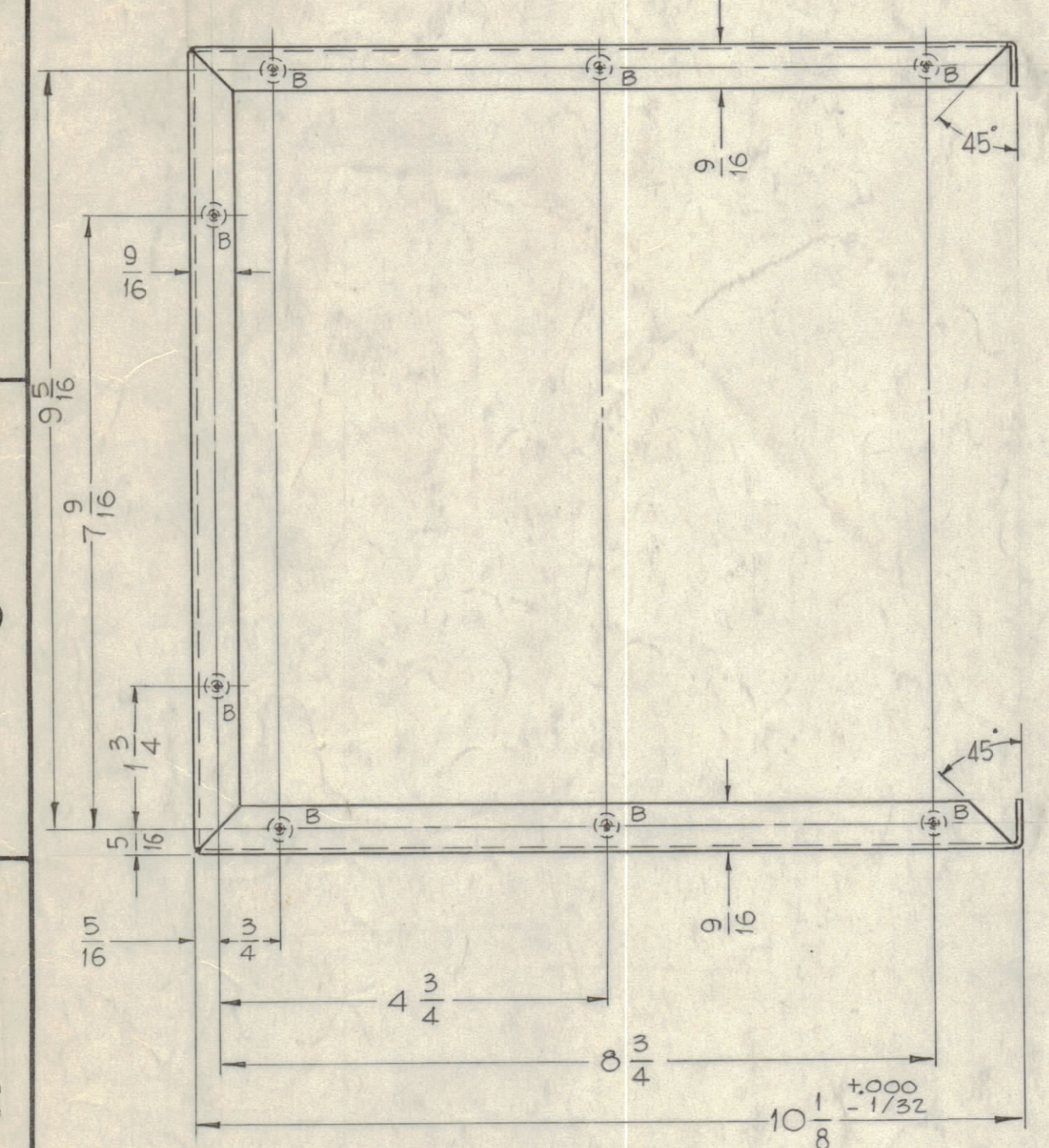


NOTICE TO PERSONS RECEIVING THIS DRAWING

THE TECHNICAL MATERIEL CORPORATION claims proprietary right in the material disclosed hereon. This drawing is issued in confidence for engineering information only and may not be reproduced or used to manufacture anything shown hereon without permission from THE TECHNICAL MATERIEL CORPORATION to the user. This drawing is loaned for mutual assistance and is subject to recall at any time.

Property of:
THE TECHNICAL MATERIEL CORPORATION
MAMARONECK, NEW YORK



- HOLES -
- A - .161 MIN., .164 MAX. DIA'S FOR NT129-440-4 10 Req.
 - B - .191 MIN., .194 MAX. DIA'S FOR NT129-632-4 36 Req.
 - C - .250 MIN., .253 MAX. DIA'S FOR NT129-1032-4 9 Req.
 - D - 1/2 DIA 2 Req.
 - E - Z DRILL FOR NT129-524-4 1 Req.

NOTE:
USE MATERIAL THICKNESS FOR MAX. RADIUS ON ALL BENDS UNLESS OTHERWISE SPECIFIED.

LD 2020 (VOX)
REF - LD - 273 (PMO, RTF)

REQ. ITEM	PART NO.	DESCRIPTION	SYMBOL
1 4	NT129-524-4	NUT, ROUND, SWAGE TYPE	E
9 3	NT129-1032-4		C
36 2	NT129-632-4		B
10 1	NT129-440-4	NUT, ROUND, SWAGE TYPE	A

STOCK SIZE		THE TECHNICAL MATERIEL CORP.	
MATERIAL		MAMARONECK, NEW YORK	
.064 THICK	ALUMINUM	SHELL, OUTER OVEN	
TYPE & TEMPER		John C. Bielez	CHK
HEAT TREAT. SPEC.		DRAWN	ELEC. DES. APP.
FINISH & SPEC. NO.		CHECKED	MECH. DES. APP.
5404 - TRIDITE		FINAL APPROVAL	
		MS-2402 G	

NOTE:
MS-2402 SUPERCEDES THE FOLLOWING DWGS.
MS-324-H (MODEL VOX, -1, -2)
A-1230-G (MODEL RTF, -2)
A-794 (MODEL PHO-1, -2)

REQ. PER UNIT	MODEL	SECTION	ABBY. NO.	DATE
1	RTF-2			9-7-60
1	VOX-3,4,5,6			9-7-60
1	PMO-4,5,6			9-7-60

ISSUE	ZONE	DESCRIPTION	DATE	CH. NO.	DRAFTS	CHECKER	ENG. APP.
C	DB	ITEM ① RELOCATED FR. OUTSIDE TO INSIDE	6-28-60	16	449	G DL	[Signature]
F	B2	CLERICAL CHANGE	12-1-65			CC	[Signature]
E	68	DIM. 6 3/8 WAS 5 7/8	7-10-61	5186		GDL	[Signature]
D	7	ADDED (2) B HOLES - (C) NT129-632-4 TWO 1/2" DIA. HOLES	4-12-61	4654		DM	[Signature]
C	67	① E Hole Relocated	3-28-61	4535		DM	[Signature]
B	67	① E Hole Relocated	1-17-61	3951		DM	[Signature]
A	A8	TWO "C" HOLES ADDED	12-22-49	3792		DM	[Signature]

TOLERANCES		SCALE: 1/2 (DO NOT SCALE)
DEC. DIM. ±	MAXIMUM ALLOWABLE TOLERANCES HAVE BEEN DETERMINED AND ANY DEVIATIONS WILL BE CAUSE FOR REJECTION.	
FRACTIONAL DIM. ± 1/64	REMOVE ALL BURRS AND SHARP EDGES	
ANGULAR DIM. ±		

MS-2402 G