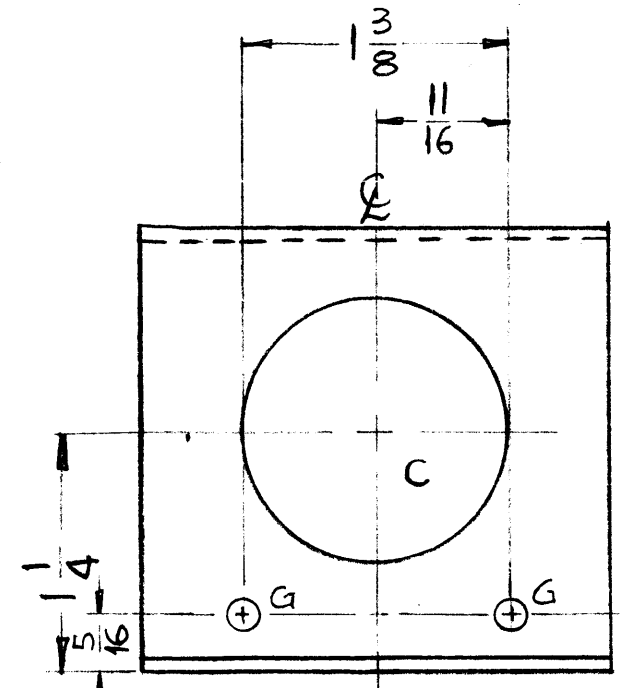
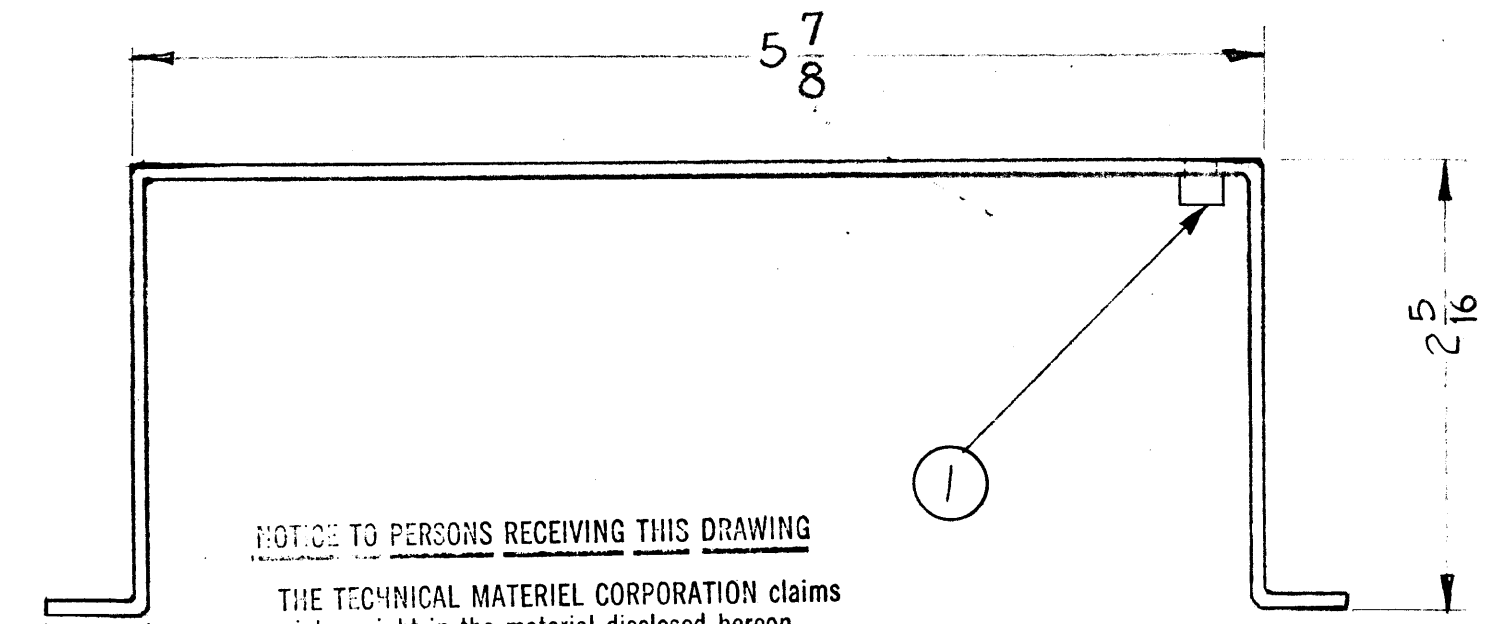
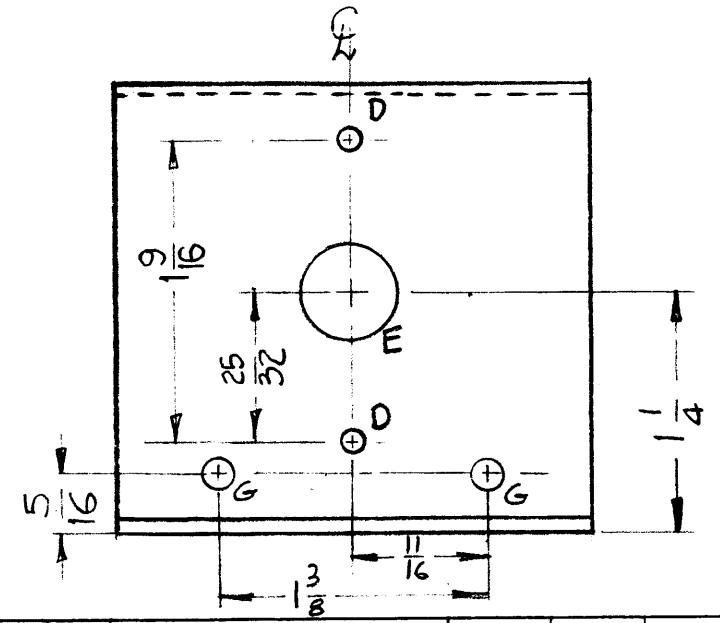
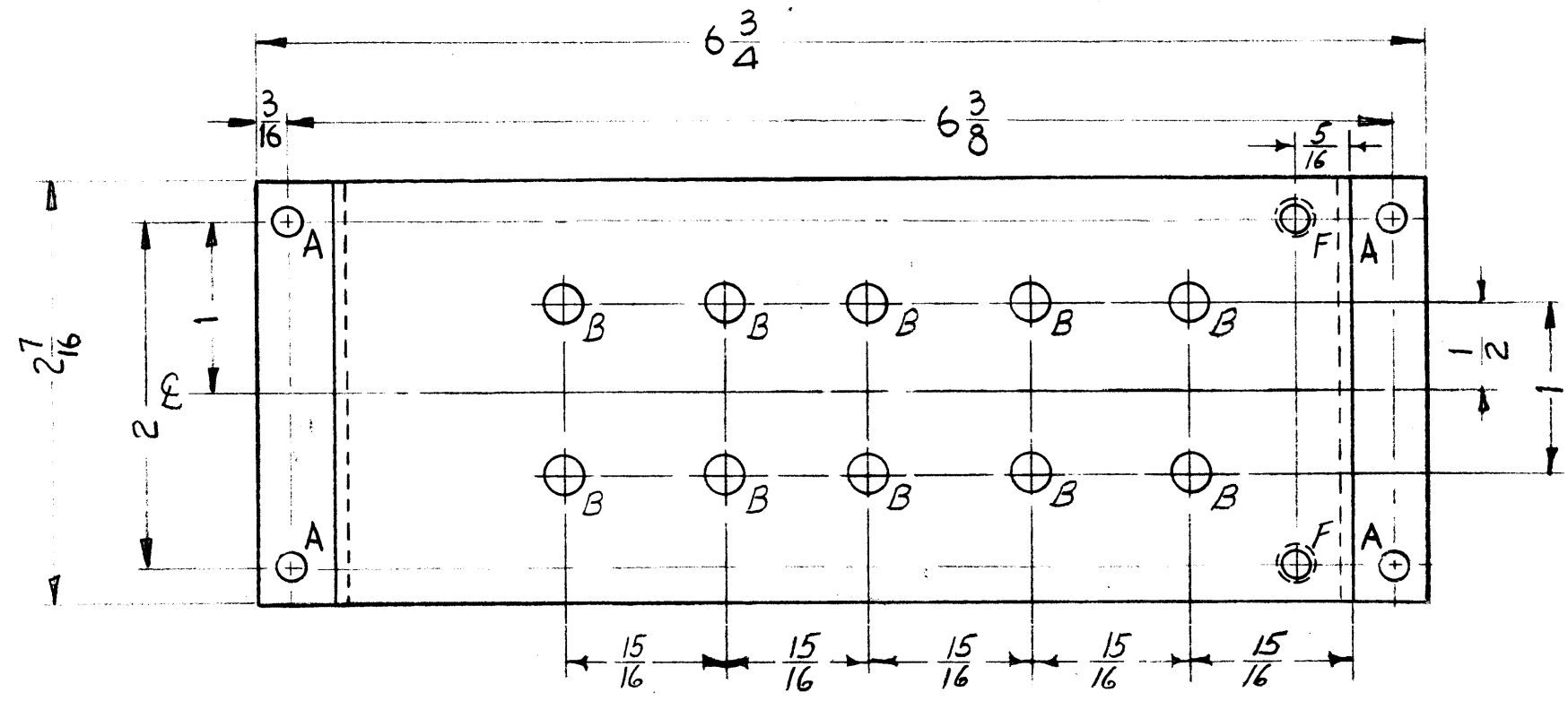


HOLE S	REQ'D
A - .166 DIA.	4
B - 7/32" (.218) DIA.	10
C - 1-3/8 DIA.	1
D - .128 DIA.	2
E - .500 (1/2) DIA	1
F - .161-.164 D. (FOR NT-129-440-4)	2
G - 1/64 DIA.	4



**NOTICE TO PERSONS RECEIVING THIS DRAWING**

THE TECHNICAL MATERIEL CORPORATION claims proprietary right in the material disclosed hereon. This drawing is issued in confidence for engineering information only and may not be reproduced or used to manufacture anything shown hereon without permission from THE TECHNICAL MATERIEL CORPORATION to the user. This drawing is loaned for mutual assistance and is subject to recall at any time.

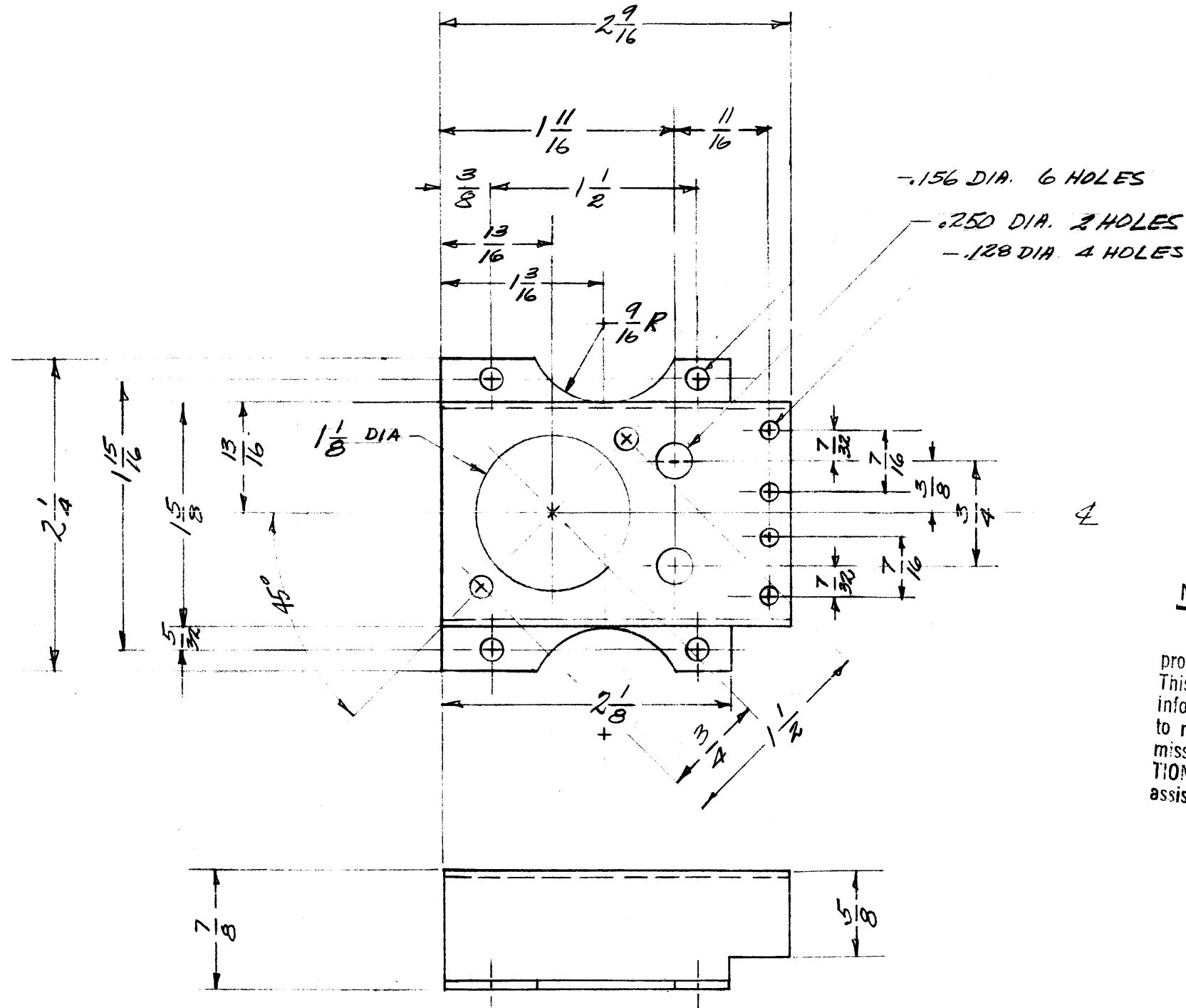
Property of:  
**THE TECHNICAL MATERIEL CORPORATION**  
 MAMARONECK, NEW YORK

ISSUE	ITEM	CHANGED FROM	DATE	CH. NO.	DRAFTS	CHECKER	ENG. APP.
B	2	(4) G HOLES ADDED	6/14/61	5082	JDM	JCR	[Signature]
A	1	(2) D HOLES DELETED	8-18-60	#	[Signature]	[Signature]	[Signature]
TOLERANCES		SCALE: 11					
DEC. DIM. ±		MAXIMUM ALLOWABLE TOLERANCES HAVE BEEN DETERMINED AND ANY DEVIATIONS WILL BE CAUSE FOR REJECTION. REMOVE ALL BURRS AND SHARP EDGES					
FRAC. DIM. ± 1/64							
ANGULAR DIM. ±							

REQ. PER UNIT	MODEL	PROJECT NO.	ASSY. NO.	DATE
1	CLL-1			6-21-60
USED ON				

REQ. ITEM	PART NO.	DESCRIPTION	SYMBOL
2	NT-129-440-4	NUT, ROUND, SWAGE TYPE	
.064		THE TECHNICAL MATERIEL CORP. MAMARONECK, NEW YORK	
ALUMINUM		TRIMMER CAPACITOR MOUNTING BRACKET	
5052-H32		DRAWN: [Signature] CHECKED: [Signature]	FINAL APPROVAL: [Signature]
ETCH & IRIDITE		ELEC. DES. APP. [Signature]	MECH. DES. APP. [Signature]
FINISH & SPEC. NO.			MS-2310 B

MS-2312



**NOTICE TO PERSONS RECEIVING THIS DRAWING**

THE TECHNICAL MATERIEL CORPORATION claims proprietary right in the material disclosed hereon. This drawing is issued in confidence for engineering information only and may not be reproduced or used to manufacture anything shown hereon without permission from THE TECHNICAL MATERIEL CORPORATION to the user. This drawing is loaned for mutual assistance and is subject to recall at any time.

Property of:  
**THE TECHNICAL MATERIEL CORPORATION**  
 MAMARONECK, NEW YORK

ISSUE	ITEM	CHANGED FROM	DATE	CH. NO.	DRAFTS	CHECKER	ENG. APP.
TOLERANCES		SCALE: FULL					
DEC. DIM. ±		MAXIMUM ALLOWABLE TOLERANCES HAVE BEEN DETERMINED AND ANY DEVIATIONS WILL BE CAUSE FOR REJECTION.					
FRAC. DIM. ± 1/64		REMOVE ALL BURRS AND SHARP EDGES					
ANGULAR DIM. ±							

REQ. PER UNIT	MODEL	PROJECT NO.	ASS'Y. NO.	DATE
1	MSR-5			6-22-60
USED ON				

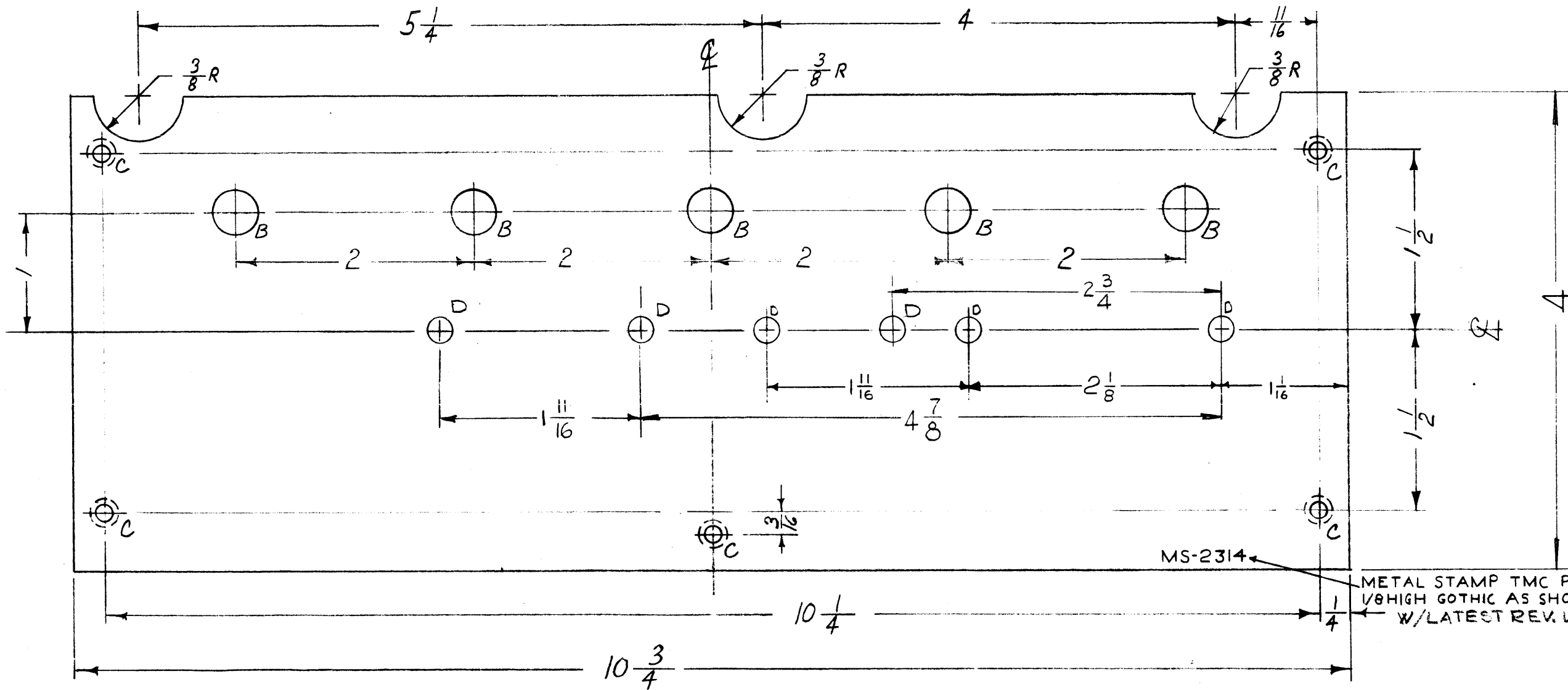
REQ. ITEM	PART NO.	DESCRIPTION	SYMBOL
	.062	THE TECHNICAL MATERIEL CORP.	
	STOCK SIZE	MAMARONECK, NEW YORK	
	ALUMINUM	SUB-CHASSIS	
	MATERIAL	1ST OSC. CRYSTAL CONTROL MSR-5	
5052-H32		WF	J. ANGER
5404 YELL. IRIDITE		DRAWN	CHECKED
			FINAL APPROVAL
			MS-2312
		ELEC. DES. APP.	MECH. DES. APP.

MS-2314 D

HOLES

- B- 3/8 DIA
- C- DR. & C'SINK FOR 8-32 F.H.S
- D- 7/32 DIA.

REQ.  
5  
5  
6



**NOTICE TO PERSONS RECEIVING THIS DRAWING**  
 THE TECHNICAL MATERIEL CORPORATION claims proprietary right in the material disclosed hereon. This drawing is issued in confidence for engineering information only and may not be reproduced or used to manufacture anything shown hereon without permission from THE TECHNICAL MATERIEL CORPORATION to the user. This drawing is loaned for mutual assistance and is subject to recall at any time.

Property of:  
 THE TECHNICAL MATERIEL CORPORATION  
 MAMARONECK, NEW YORK

METAL STAMP TMC PT. NO. 1/8" HIGH GOthic AS SHOWN W/LATEST REV. LETTER

ISSUE ITEM	CHANGED FROM	DATE	CH. NO.	DRAFTS	CHECKER	ENG. APP.
D	3"D HOLES ADDED	4-14-66	16097	G.D.L.	W.S.	[Signature]
C	3"D HOLES RELOCATED	9-13-61	5555	ER	W.S.	[Signature]
B	ITEM (NT-129-524-6) DELETED	6-29-61	5159	G.D.L.	Ru	[Signature]
	2"D HOLES ADDED					
	1"D HOLE RELOCATED					
A	1"A HOLE .413D. DELETED	7-22-60	2631	W.S.	[Signature]	[Signature]

REQ. PER UNIT	MODEL	PROJECT NO.	ASS'Y. NO.	DATE
1	MSR-8			6-29-61
1	MSR-6			6-29-61
1	MSR-5			6-29-61
1	MSR-4			6-27-60
1	MSR-3A			6-27-60
1	MSR-3			6-27-60

REQ. ITEM	PART NO.	DESCRIPTION	SYMBOL
	.081	STOCK SIZE	
	ALUMINUM	MATERIAL	
	5052-H32		
	3404 YELL. IRIDITE	FINISH & SPEC. NO.	

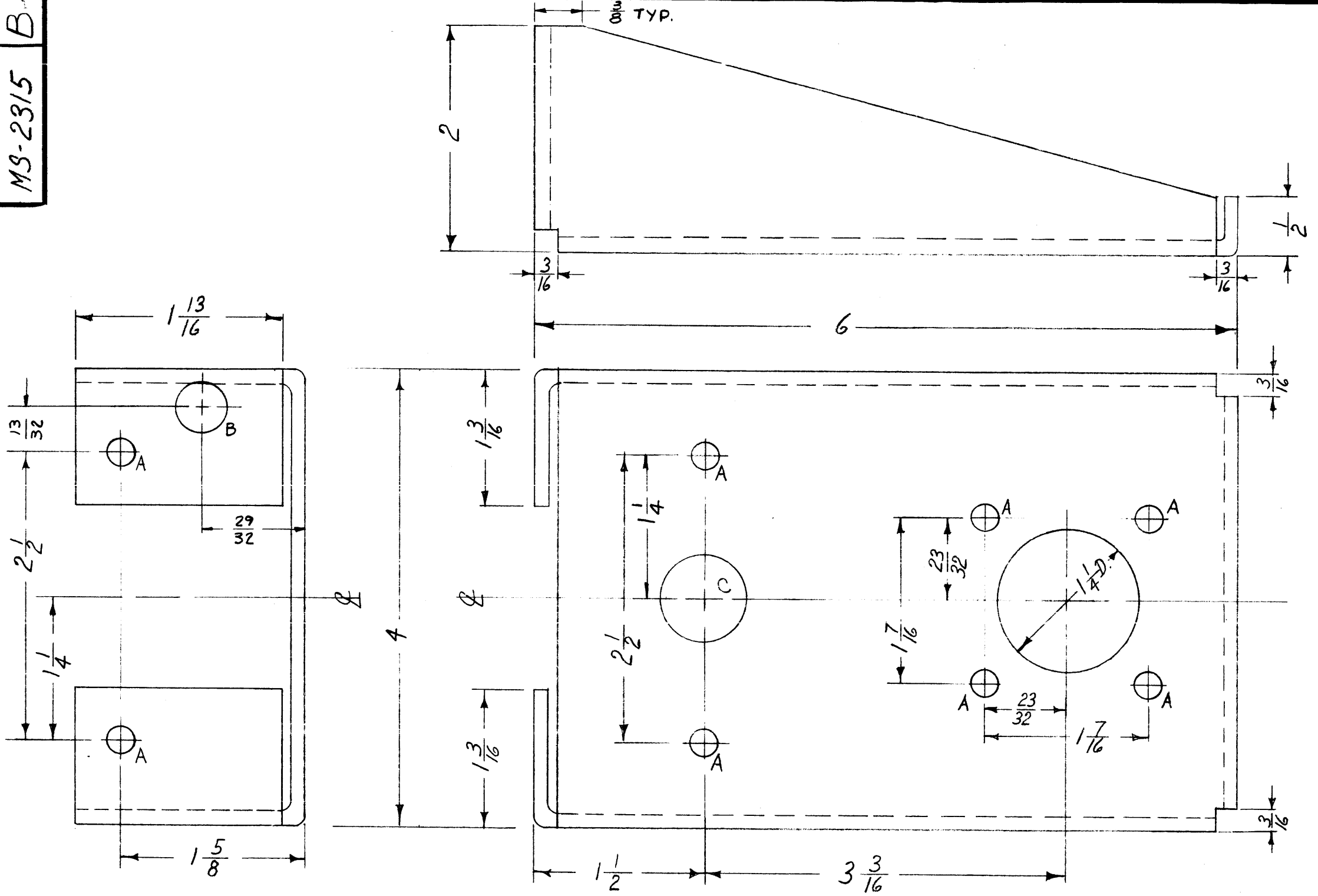
  

TYPE & TEMPER	HEAT TREAT. SPEC.	DRAWN	CHECKED	FINAL APPROVAL
		[Signature]	[Signature]	[Signature]

ELEC. DES. APP.	MECH. DES. APP.	PART NO.	REV.
		MS-2314	D

MS-2315 B



A ~ 15/64 (.234) D.  
 B ~ 7/16 DIA.  
 C ~ 3/4 DIA.

8 REQ.  
 1 REQ.  
 1 REQ.

PROPERTY OF PERSONS RECEIVING THIS DRAWING  
 THE TECHNICAL MATERIEL CORPORATION claims  
 property right in the material disclosed herein.  
 This drawing is issued in confidence for engineering  
 information only and may not be reproduced or used  
 to manufacture anything shown herein without per-  
 mission from THE TECHNICAL MATERIEL CORPORA-  
 TION to the user. This drawing is loaned for mutual  
 assistance and is subject to recall at any time.

Property of:  
 THE TECHNICAL MATERIEL CORPORATION  
 MAMARONECK, NEW YORK

ISSUE	ITEM	CHANGED FROM	DATE	CH. NO.	DRAFTS	CHECKER	ENG. APP.
B	1	3/8 DIM ADDED	10/9/63	10161	GD	MAF	WMB
A	2	(1) "B" HOLE ADDED	8-15-62	6911	G.S.	GD	LB
	1	(1) "C" HOLE ADDED					
TOLERANCES			SCALE: FULL				
DEC. DIM. ±			MAXIMUM ALLOWABLE TOLERANCES HAVE BEEN DETERMINED AND ANY DEVIATIONS WILL BE CAUSE FOR REJECTION. REMOVE ALL BURRS AND SHARP EDGES				
FRAC. DIM. ± 1/64							
ANGULAR DIM. ±							

REQ. PER UNIT	MODEL	PROJECT NO.	ASS'Y. NO.	DATE
1	GPT-40K	10K MODIFICATION		6-27-60
USED ON				

REQ. ITEM	PART NO.	DESCRIPTION	SYMBOL
	1/8	THE TECHNICAL MATERIEL CORP. MAMARONECK, NEW YORK	
	STOCK SIZE		
	ALUMINUM	BRACKET, CONNECTOR (UNBAL EMERG. BRACKET)	
	MATERIAL		
	5052-H32		
	TYPE & TEMPER	HEAT TREAT. SPEC.	
	S404 YELL IRIDITE		
	FINISH & SPEC. NO.	ELEC. DES. APP.	MECH. DES. APP.
		MS-2315	B

MS-2319 A

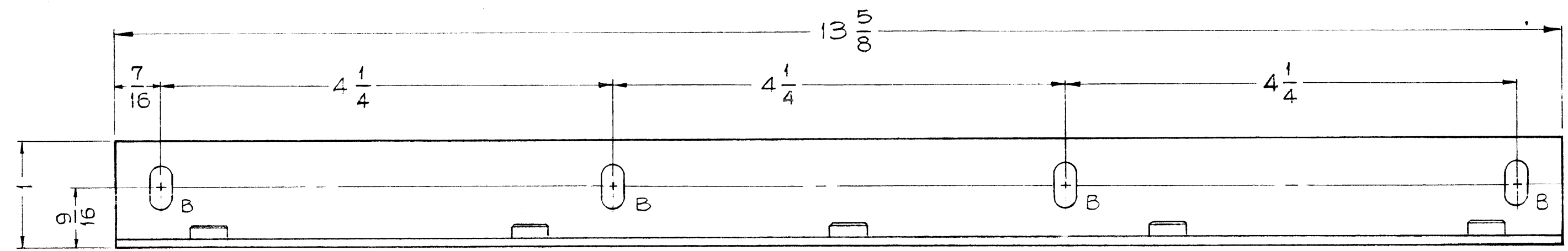
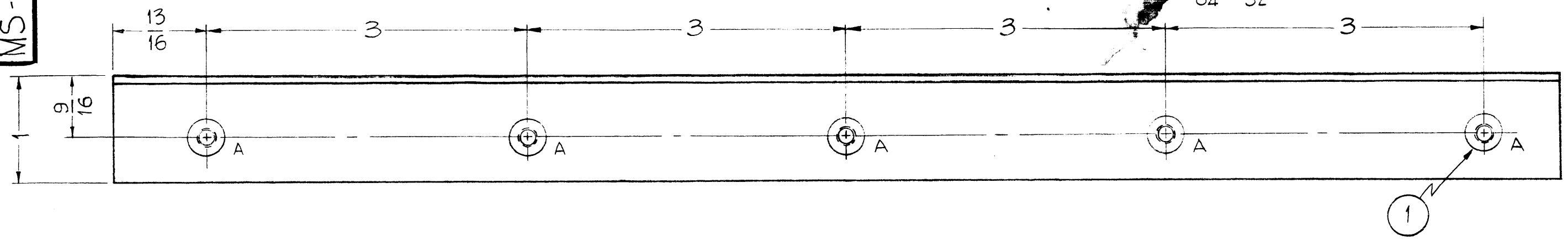
HOLES -

A - .250 DIA. MIN., .253 DIA. MAX.  
FOR NT129-1032-4.

5 REQ.

4 REQ.

$\frac{3}{64} \times \frac{13}{32}$  SLOTS



NOTICE TO PERSONS RECEIVING THIS DRAWING

THE TECHNICAL MATERIEL CORPORATION claims proprietary right in the material disclosed hereon. This drawing is issued in confidence for engineering information only and may not be reproduced or used to manufacture anything shown hereon without permission from THE TECHNICAL MATERIEL CORPORATION to the user. This drawing is loaned for mutual assistance and is subject to recall at any time.

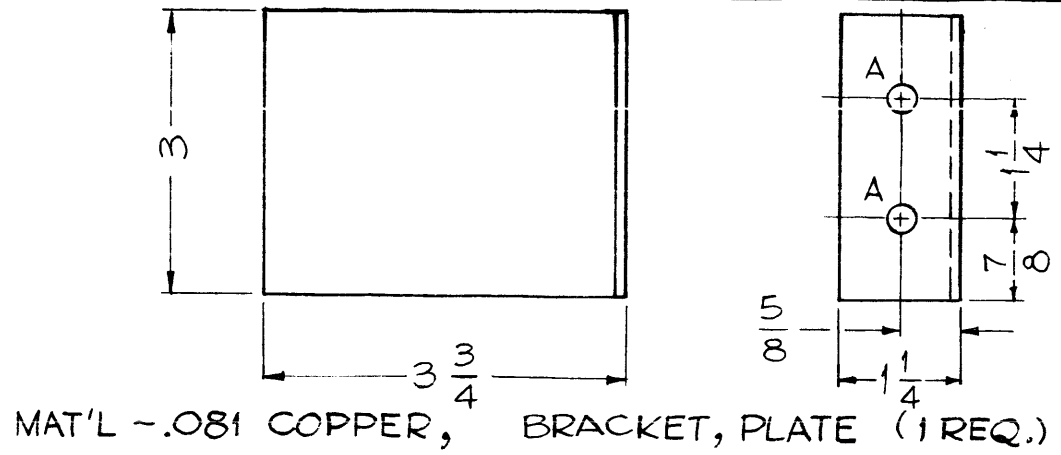
Property of:  
THE TECHNICAL MATERIEL CORPORATION  
MAMARONECK, NEW YORK

A	1	Dim. 13/16 WAS 7/8	3-6-61	4319	DGM	JCB	[Signature]
ISSUE	ITEM	CHANGED FROM	DATE	CH. NO.	DRAFTS	CHECKER	ENG. APP.
TOLERANCES			SCALE: FULL (DO NOT SCALE)				
DEC. DIM. ±			MAXIMUM ALLOWABLE TOLERANCES HAVE BEEN DETERMINED AND ANY DEVIATIONS WILL BE CAUSE FOR REJECTION.				
FRAC. DIM. ± 1/64			REMOVE ALL BURRS AND SHARP EDGES				
ANGULAR DIM. ±							

1	GPT 40K	MODE SWITCH	7-6-60
REQ. PER UNIT	MODEL	PROJECT NO.	ASS'Y. NO.
USED ON			

5	1	NT129-1032-4	NUT, ROUND, SWAGE TYPE	
REQ.	ITEM	PART NO.	DESCRIPTION	SYMBOL
		.081		
STOCK SIZE			THE TECHNICAL MATERIEL CORP. MAMARONECK, NEW YORK	
ALUMINUM			BRACKET, LOAD RESISTOR MOUNTING	
MATERIAL			J.C. Biele	[Signature]
5052-H-32			DRAWN	CHECKED
TYPE & TEMPER			FINAL APPROVAL	
5404-IRIDITE			[Signature]	
FINISH & SPEC. NO.			ELEC. DES. APP.	MECH. DES. APP.
			MS-2319 A	

MS-2322 D



A ~ 5/16 DIA. 2 REQ.

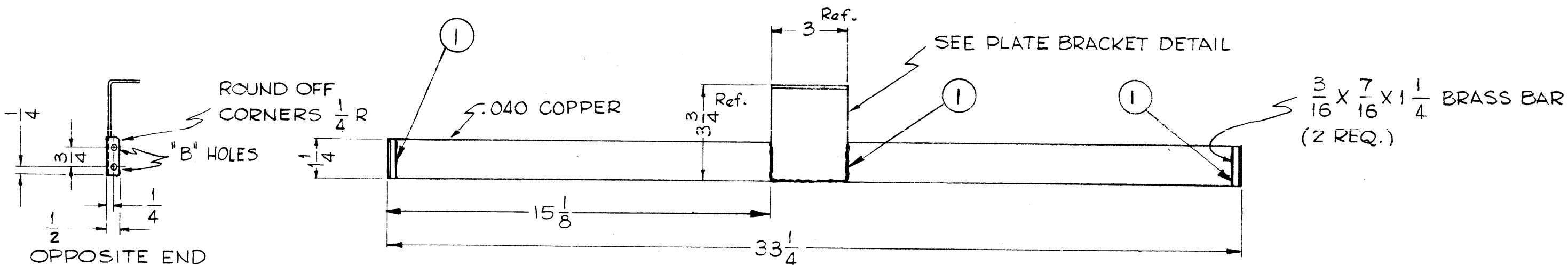
(1/2 DO NOT SCALE)

NOTICE TO PERSONS RECEIVING THIS DRAWING

THE TECHNICAL MATERIEL CORPORATION claims proprietary right in the material disclosed hereon. This drawing is issued in confidence for engineering information only and may not be reproduced or used to manufacture anything shown hereon without permission from THE TECHNICAL MATERIEL CORPORATION to the user. This drawing is loaned for mutual assistance and is subject to recall at any time.

Property of:  
THE TECHNICAL MATERIEL CORPORATION  
MAMARONECK, NEW YORK

MAT'L -.081 COPPER, BRACKET, PLATE (1 REQ.)



FINISH - AFTER ASS'Y OF PLATE BRACKET AND BRASS BARS - S245 SILVER PLATE - S423 CLEAR IRIDITE

HOLES ~  
B ~ 13/64 DIA. 4 REQ.

ISSUE	ITEM	CHANGED FROM	DATE	CH. NO.	DRAFTS	CHECKER	ENG. APP.
D	1	ITEM 1 ADDED SILVER SOLDER NOTE DELETED	3-3-67	1788B	G.D.L.	[Signature]	[Signature]
C	1	FINISH WAS .000025 GOLD PLATE	7-8-63	9450	[Signature]	[Signature]	[Signature]
B	1	15-1/8 DIM. ADDED	2-15-62	6390	[Signature]	[Signature]	[Signature]
A	2	DIM 1/4 WAS 3/8 (Front of BAR)	11-18-60	3528	[Signature]	[Signature]	[Signature]
A	1	DIM 1/4 WAS 1/2 (End of BAR)					

TOLERANCES		SCALE: 1/4 (DO NOT SCALE)	
DEC. DIM. ±		MAXIMUM ALLOWABLE TOLERANCES HAVE BEEN DETERMINED AND ANY DEVIATIONS WILL BE CAUSE FOR REJECTION. REMOVE ALL BURRS AND SHARP EDGES	
FRAC. DIM. ± 1/64			
ANGULAR DIM. ±			

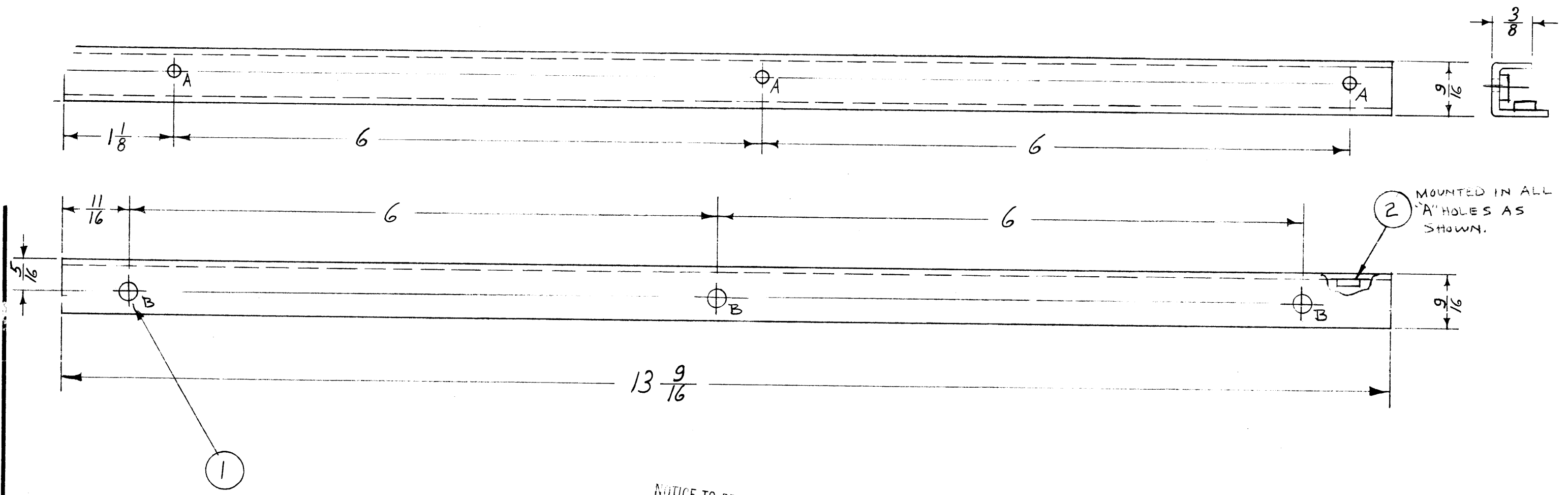
REQ. PER UNIT	MODEL	PROJECT NO.	ASS'Y. NO.	DATE
1	GPT 40K	AX-209		7-5-60

REQ. ITEM	PART NO.	DESCRIPTION	SYMBOL
X 1	BS101-1	SOLDER, SILVER	
SEE NOTE		STOCK SIZE	
SEE NOTE		MATERIAL	
		J.C. Biale [Signature]	[Signature]
TYPE & TEMPER		HEAT TREAT. SPEC.	
SEE NOTE			
FINISH & SPEC. NO.		ELEC. DES. APP.	MECH. DES. APP.

THE TECHNICAL MATERIEL CORP.  
MAMARONECK, NEW YORK  
PLATE, CONNECTOR,  
FINAL TUBE

MS-2322 D

A - .161 DIA (FOR NT-129-440-4) 3REQ.  
 B - .191-.194 D. (FOR NT-129-632-4) 3REQ.



**NOTICE TO PERSONS RECEIVING THIS DRAWING**  
 THE TECHNICAL MATERIEL CORPORATION claims proprietary right in the material disclosed hereon. This drawing is issued in confidence for engineering information only and may not be reproduced or used to manufacture anything shown hereon without permission from THE TECHNICAL MATERIEL CORPORATION to the user. This drawing is loaned for mutual assistance and is subject to recall at any time.

Property of:  
 THE TECHNICAL MATERIEL CORPORATION  
 MAMARONECK, NEW YORK

A	A' HOLE WAS 1/8 DIA. ITEM 2 ADDED	9-23-60	3072	Cus	Jule		
ISSUE	ITEM	CHANGED FROM	DATE	CH. NO.	DRAFTS	CHECKER	ENG. APP.
TOLERANCES		SCALE: FULL					
DEC. DIM. ±		MAXIMUM ALLOWABLE TOLERANCES HAVE BEEN DETERMINED AND ANY DEVIATIONS WILL BE CAUSE FOR REJECTION.					
FRAC. DIM. ± 1/64		REMOVE ALL BURRS AND SHARP EDGES					
ANGULAR DIM. ±							

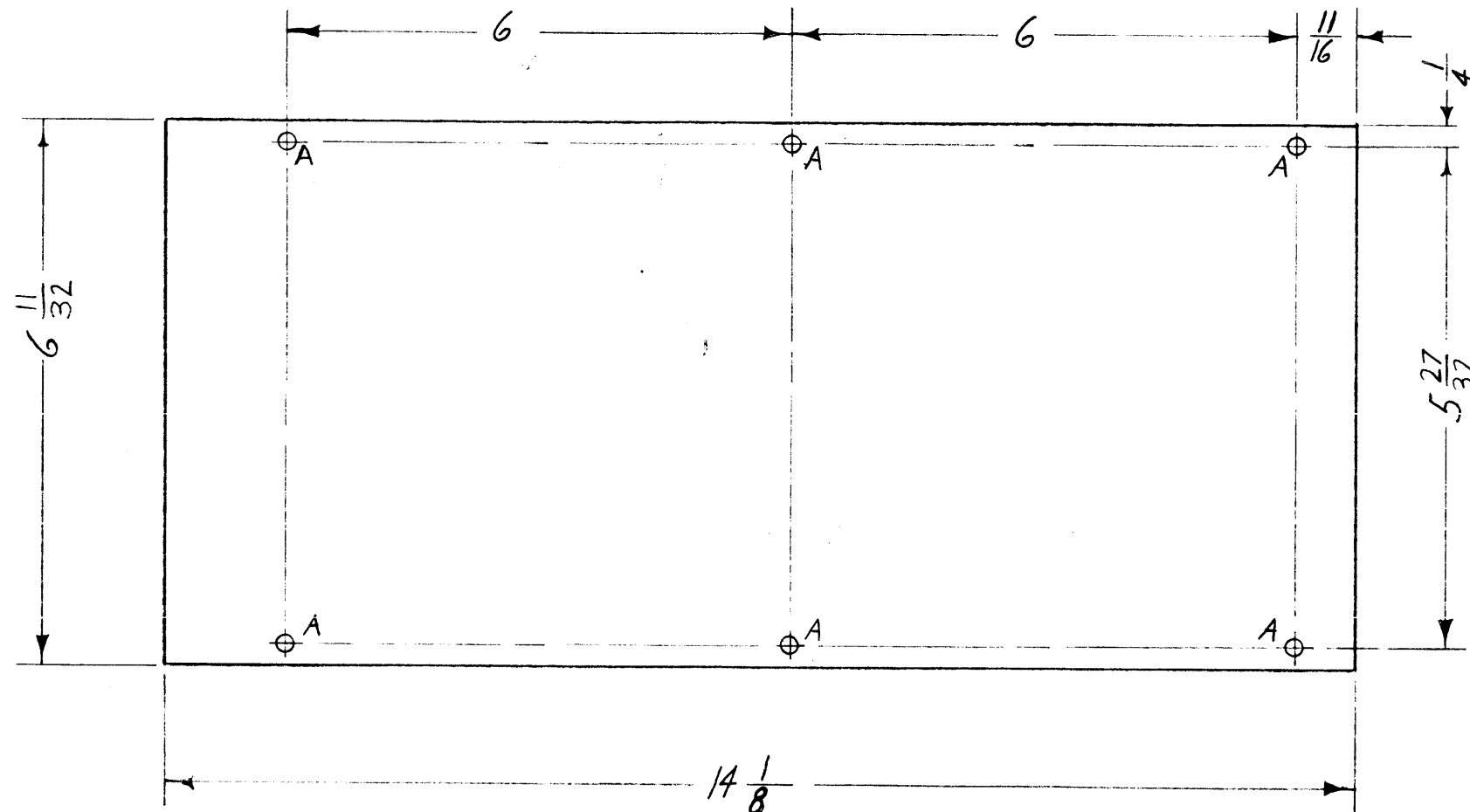
1	CMO-2		8-8-60
1	CMO-1		8-8-60
REQ. PER UNIT	MODEL	PROJECT NO.	ASS'Y. NO.
USED ON			

3	2	NT-129-440-4	NUT ROUND SWAGE TYPE	
3	1	NT-129-632-4	NUT, ROUND, SWAGE TYPE	
REQ. ITEM		PART NO.	DESCRIPTION	SYMBOL
.064		THE TECHNICAL MATERIEL CORP. MAMARONECK, NEW YORK		
ALUMINUM		TRACK, LEFT, BOTTOM		
MATERIAL:				
5052-H32				
TYPE & TEMPER		HEAT TREAT. SPEC.	DRAWN	CHECKED
S404 YELL. IRIDITE			J. D.	
FINISH & SPEC. NO.		ELEC. DES. APP.	MECH. DES. APP.	
				MS-2347
				A

MS-2350 A

A -  $\frac{11}{64}$  D.

6 REQ.



NOTICE TO PERSONS RECEIVING THIS DRAWING

THE TECHNICAL MATERIEL CORPORATION claims proprietary right in the material disclosed hereon. This drawing is issued in confidence for engineering information only and may not be reproduced or used to manufacture anything shown hereon without permission from THE TECHNICAL MATERIEL CORPORATION to the user. This drawing is loaned for mutual assistance and is subject to recall at any time.

Property of:  
**THE TECHNICAL MATERIEL CORPORATION**  
 MAMARONECK, NEW YORK

ISSUE	ITEM	CHANGED FROM	DATE	CH. NO.	DRAFTS	CHECKER	ENG. APP.
A	1	DIM $6\frac{11}{32}$ WAS $6\frac{7}{16}$ , $5\frac{27}{32}$ WAS $5\frac{15}{16}$	11-3-60	3372			
TOLERANCES		SCALE: $\frac{1}{2}$					
DEC. DIM. $\pm$		MAXIMUM ALLOWABLE TOLERANCES HAVE BEEN DETERMINED AND ANY DEVIATIONS WILL BE CAUSE FOR REJECTION.					
FRAC. DIM. $\pm \frac{1}{64}$		REMOVE ALL BURRS AND SHARP EDGES					
ANGULAR DIM. $\pm$							

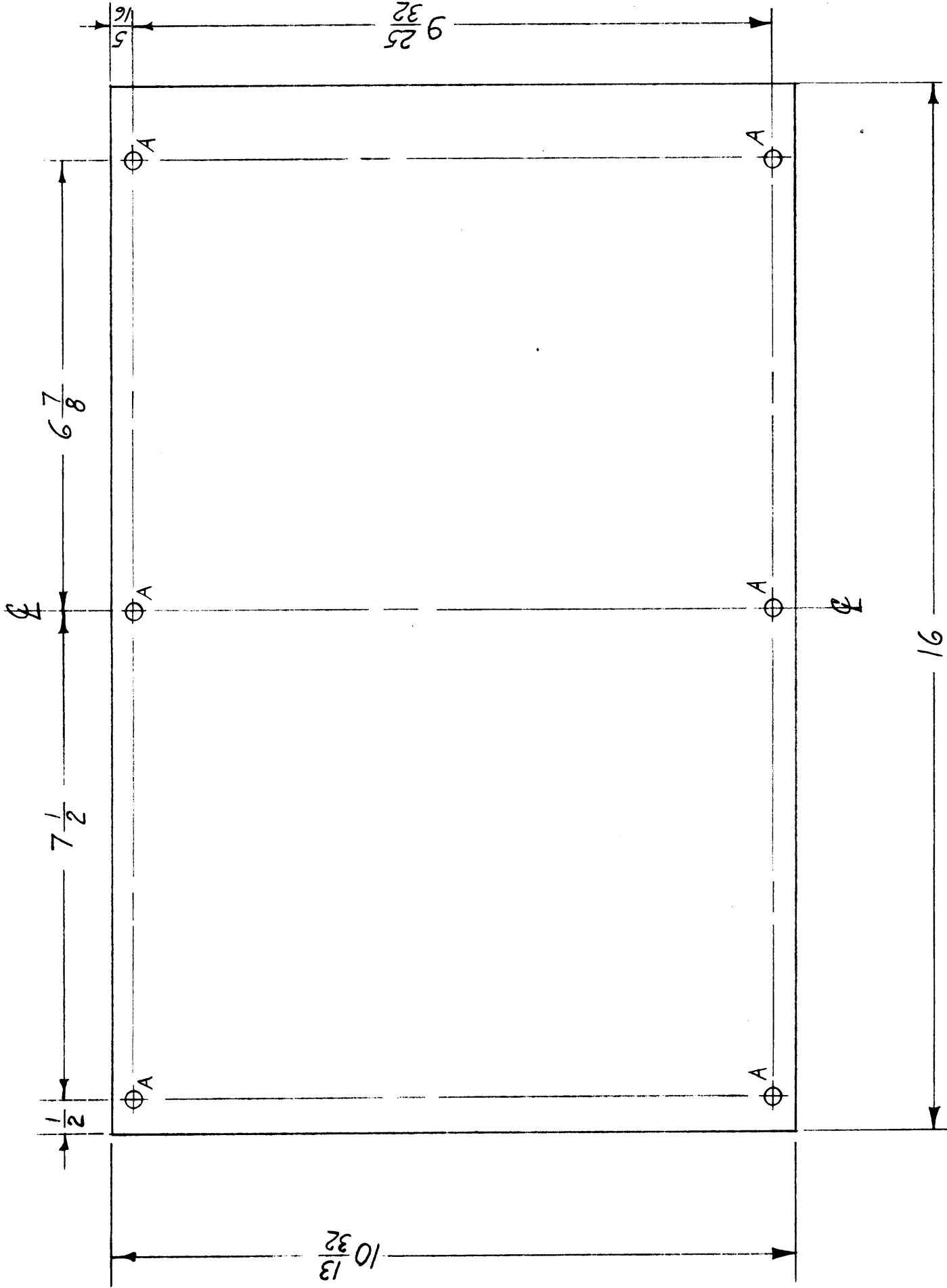
REQ. PER UNIT	MODEL	PROJECT NO.	ASS'Y. NO.	DATE
1	CMO-2			8-8-60
1	CMO-1			8-8-60
USED ON				

REQ. ITEM	PART NO.	DESCRIPTION			SYMBOL
	.051	THE TECHNICAL MATERIEL CORP.			
	STOCK SIZE	MAMARONECK, NEW YORK			
	ALUMINUM	COVER, BOTTOM			
	MATERIAL	RF SECTION			
	5052-H32				
	TYPE & TEMPER	HEAT TREAT. SPEC.	DRAWN	CHECKED	FINAL APPROVAL
	5404 YELL. IRIDITE				
	FINISH & SPEC. NO.	ELEC. DES. APP.	MECH. DES. APP.		
				MS-2350	A



A ~ 1/4 DIA.

6 REQ.



**NOTICE TO PERSONS RECEIVING THIS DRAWING**  
 THE TECHNICAL MATERIEL CORPORATION claims proprietary right in the material disclosed herein. This drawing is issued in confidence for engineering information only and may not be reproduced or used to manufacture anything shown hereon without permission from THE TECHNICAL MATERIEL CORPORATION to the user. This drawing is loaned for mutual assistance and is subject to recall at any time.

Property of:

THE TECHNICAL MATERIEL CORPORATION  
 MAMARONECK, NEW YORK

MS-2351

REQ. ITEM	PART NO.	DESCRIPTION	SYMBOL
	.064	THE TECHNICAL MATERIEL CORP. MAMARONECK, NEW YORK	
	ALUMINUM	COVER, TOP	
	5052-H32	OVEN SECTION	
TYPE & TEMPER	HEAT TREAT. SPEC.	DRAWN	CHECKED
S404 YELL. IRIDITE			GENERAL APPROVAL
FINISH & SPEC. NO.		ELEC. DES. APP. [Signature]	MS-2351

1	CMO-2	8-5-60	
1	CMO-1	8-5-60	
REQ. PER UNIT	MODEL	DATE	ASSY. NO.

USED ON

ISSUE ITEM	CHANGED FROM	DATE	CH. NO.	DRAFTS	CHECKER	ENG. APP.

TOLERANCES

DEC. DIM. ± 1/64  
 FRAC. DIM. ± 1/64  
 ANGULAR DIM. ±

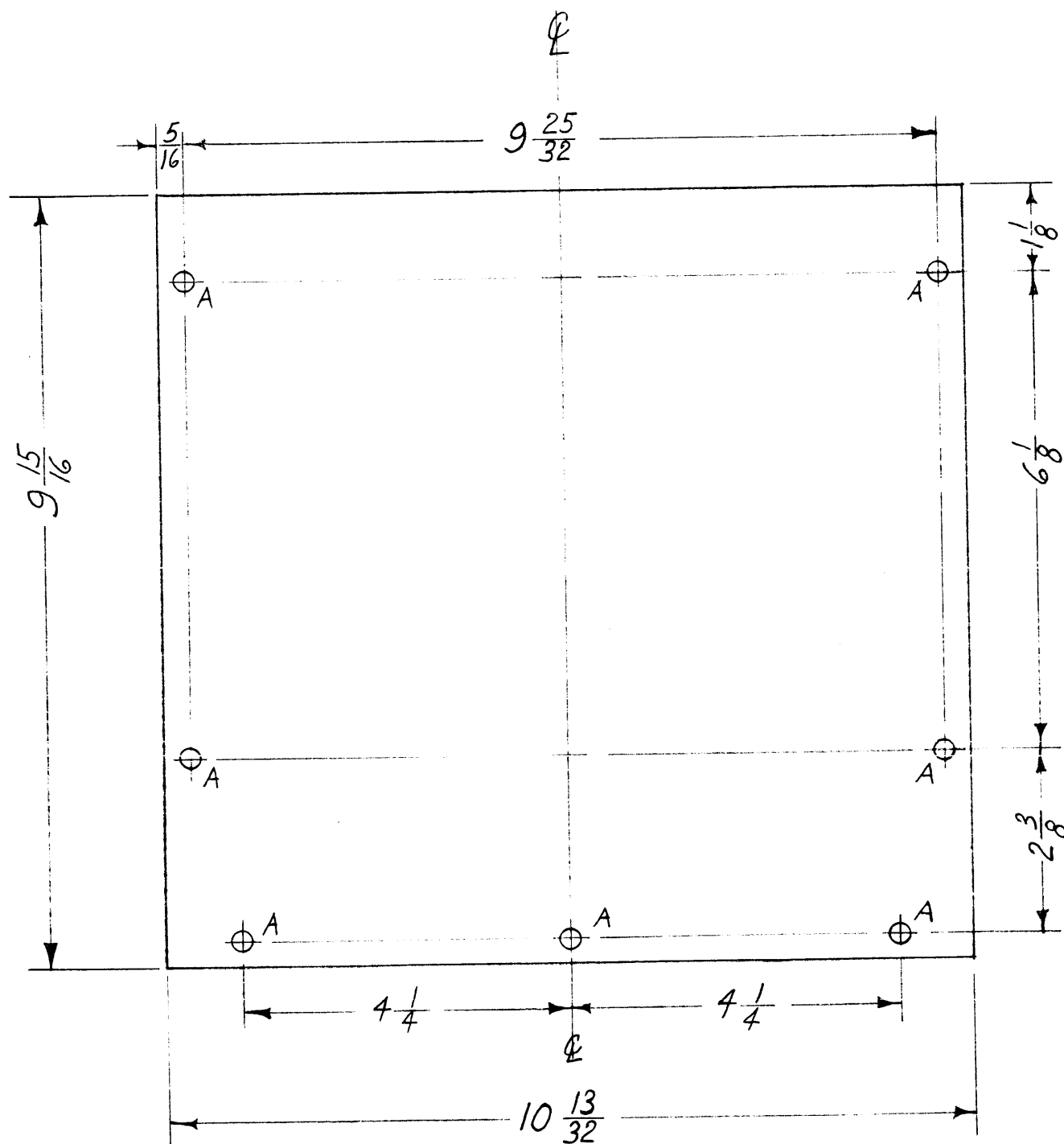
SCALE: 1/2

MAXIMUM ALLOWABLE TOLERANCES HAVE BEEN DETERMINED AND ANY DEVIATIONS WILL BE CAUSE FOR REJECTION. REMOVE ALL BURRS AND SHARP EDGES

MS-2352

A ~ 1/4 D.

7 REQ.



**NOTICE TO PERSONS RECEIVING THIS DRAWING**

THE TECHNICAL MATERIEL CORPORATION claims proprietary right in the material disclosed hereon. This drawing is issued in confidence for engineering information only and may not be reproduced or used to manufacture anything shown hereon without permission from THE TECHNICAL MATERIEL CORPORATION to the user. This drawing is loaned for mutual assistance and is subject to recall at any time.

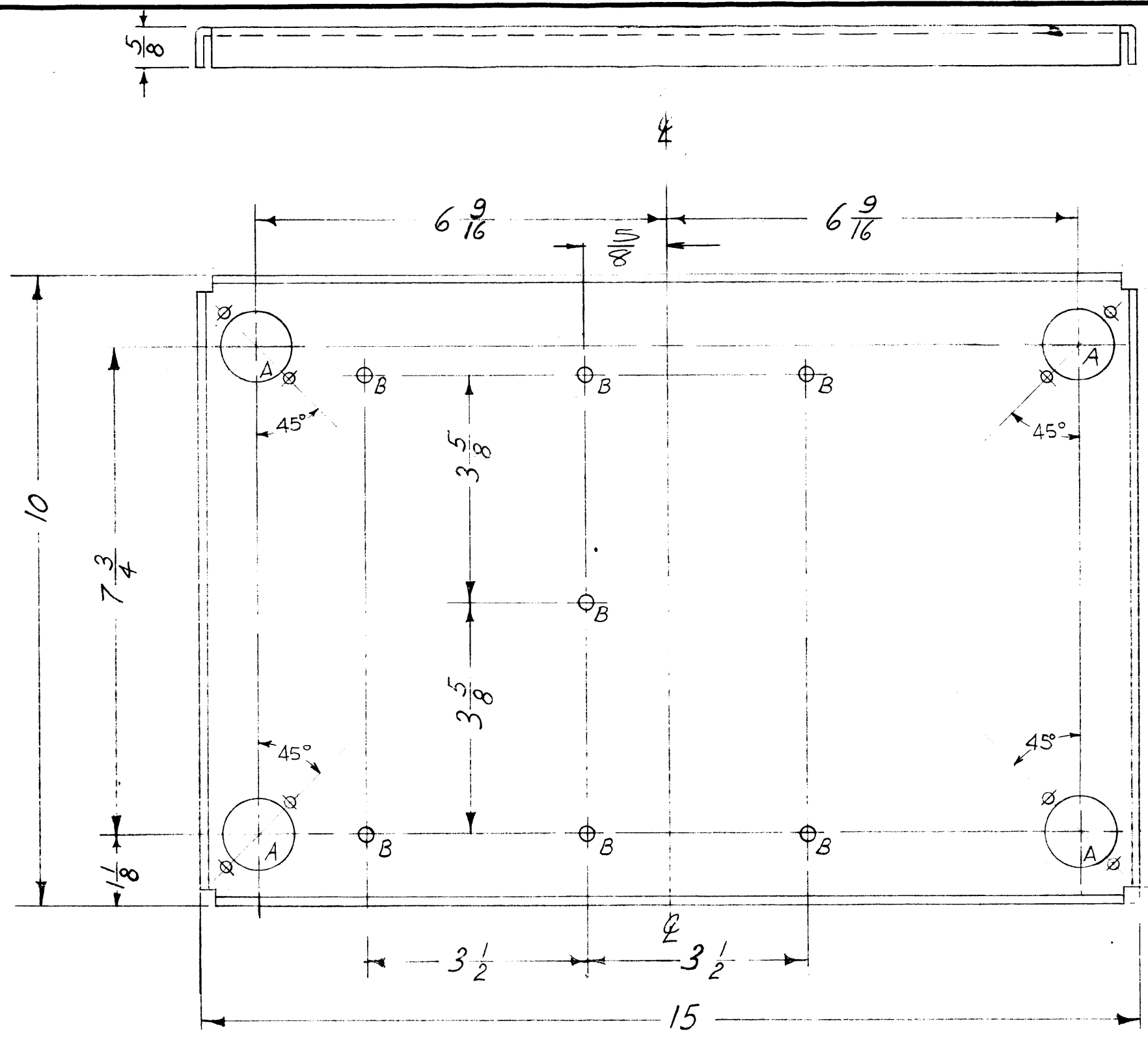
Property of:  
THE TECHNICAL MATERIEL CORPORATION  
MAMARONECK, NEW YORK

ISSUE	ITEM	CHANGED FROM	DATE	CH. NO.	DRAFTS	CHECKER	ENG. APP.
TOLERANCES		SCALE: 1/2					
DEC. DIM. ±		MAXIMUM ALLOWABLE TOLERANCES HAVE BEEN DETERMINED AND ANY DEVIATIONS WILL BE CAUSE FOR REJECTION.					
FRAC. DIM. ± 1/64		REMOVE ALL BURRS AND SHARP EDGES					
ANGULAR DIM. ±							

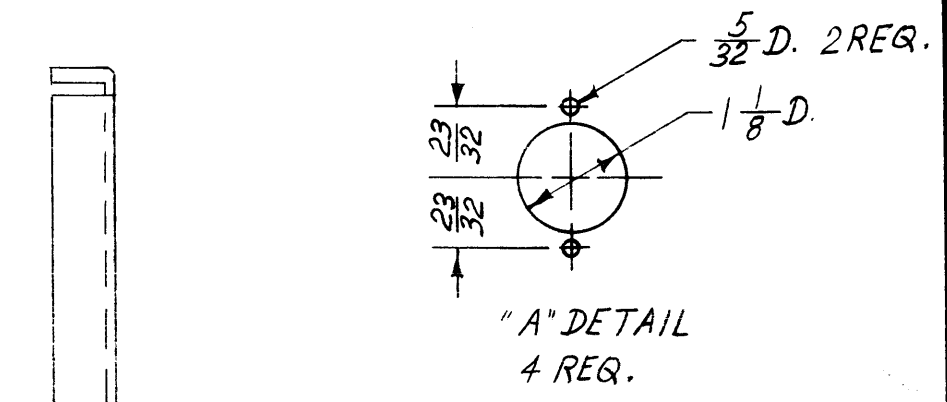
1	CMO-2			8-8-60
1	CMO-1			8-8-60
REQ. PER UNIT	MODEL	PROJECT NO.	ASS'Y. NO.	DATE
USED ON				

REQ. ITEM	PART NO.	DESCRIPTION		SYMBOL
	.064	THE TECHNICAL MATERIEL CORP.		
	STOCK SIZE	MAMARONECK, NEW YORK		
	ALUMINUM	COVER, REAR		
	MATERIAL			
5052-H32		DRAWN	CHECKED	FINAL APPROVAL
TYPE & TEMPER	HEAT TREAT. SPEC.			
S404 YELL. IRIDITE				MS-2352
FINISH & SPEC. NO.		ELEC. DES. APP.	MECH. DES. APP.	

MS-2358 C



A - SEE DETAIL 4 REQ.  
 B - .228 DIA. 7 REQ.



NOTICE TO PERSONS RECEIVING THIS DRAWING

THE TECHNICAL MATERIEL CORPORATION claims proprietary right in the material disclosed herein. This drawing is issued in confidence for engineering information only and may not be reproduced or used to manufacture anything shown hereon without permission from THE TECHNICAL MATERIEL CORPORATION to the user. This drawing is loaned for mutual assistance and is subject to recall at any time.

Property of:  
 THE TECHNICAL MATERIEL CORPORATION  
 MAMARONECK, NEW YORK

ISSUE	ITEM	CHANGED FROM	DATE	CH. NO.	DRAFTS	CHECKER	ENG. APP.
C	1	CHANGED MOUNTING DIRECTION OF "A" DETAILS TO 45°	10-20-60	3242			
B	2	2-7/16 DIM. DELETED	9-23-60	3075			
	1	5/8 DIM. ADDED					
A	2	DIM. 2 7/16 ADDED	8-17-60				
	1	DIM. 2 5/8 DELETED					

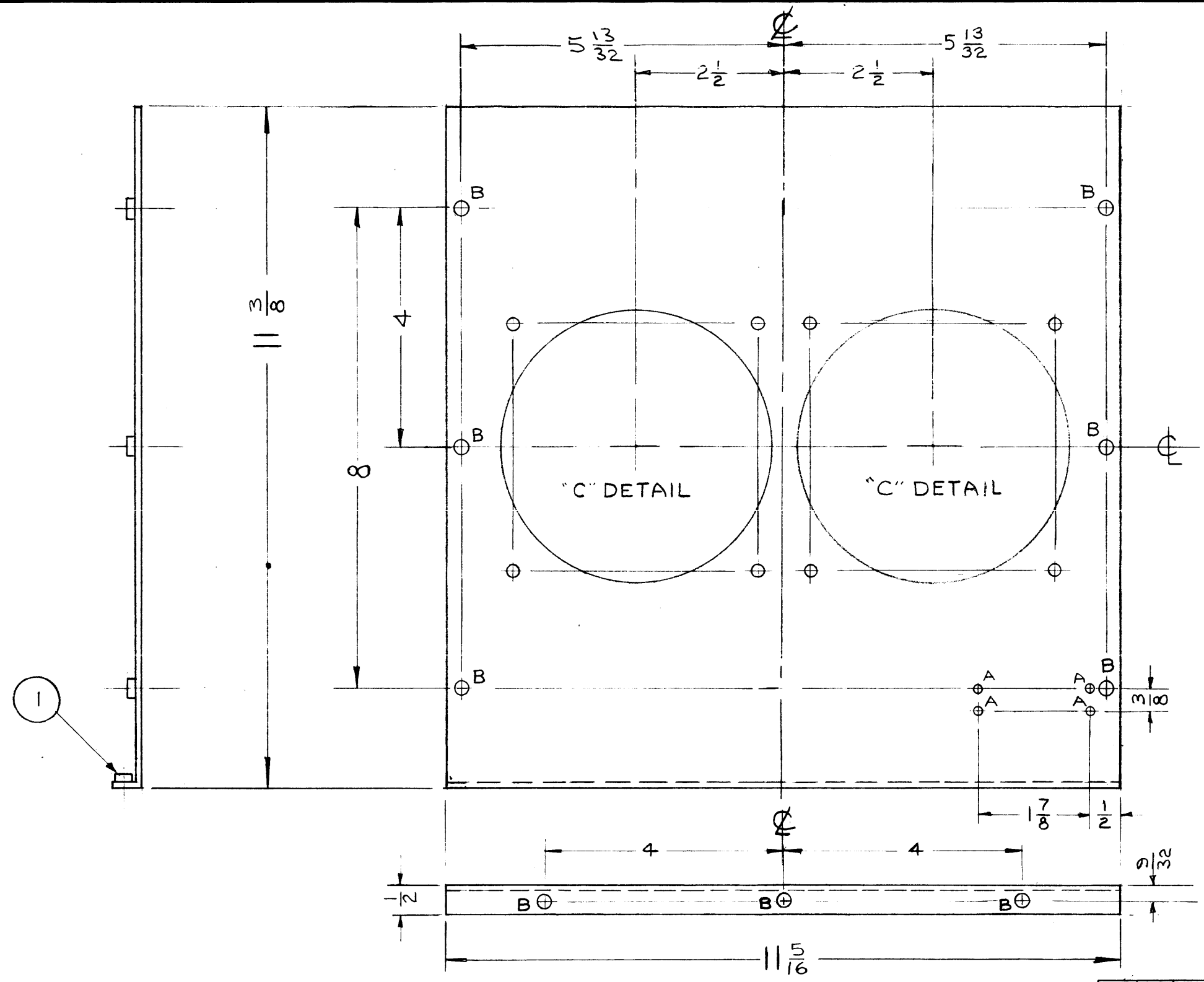
NOTE: ALL CORNERS TYP. 1/4 NOTCH.  
 ALL BENDS 1/8 RADIUS

TOLERANCES		SCALE: 1/2
DEC. DIM. ±	MAXIMUM ALLOWABLE TOLERANCES HAVE BEEN DETERMINED AND ANY DEVIATIONS WILL BE CAUSE FOR REJECTION.	
FRAC. DIM. ± 1/64	REMOVE ALL BURRS AND SHARP EDGES	
ANGULAR DIM. ±		

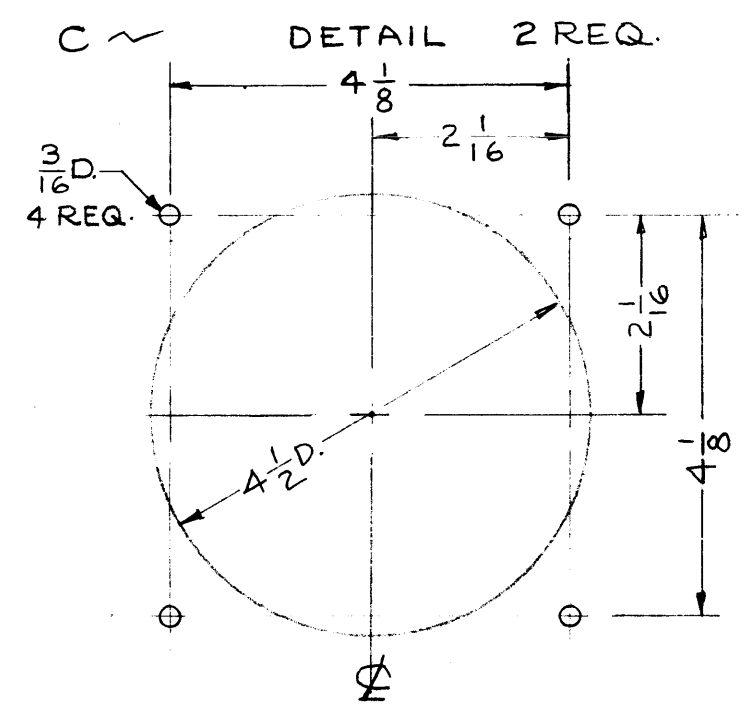
1	CMD 2			8-9-60
1	CMD-1			8-9-60
REQ. PER UNIT	MODEL	PROJECT NO.	ASSY. NO.	DATE
				USED ON

REQ. ITEM	PART NO.	DESCRIPTION	SYMBOL
	1/8	THE TECHNICAL MATERIEL CORP. MAMARONECK, NEW YORK	
	ALUMINUM	PLATE, OVEN SHOCK MTG.	
	5052-H32		
	S404 YELL. IRIDITE		

MS-2372



A ~ 1/8 DIA. HOLES 4 REQ.  
 B ~ .221 / .224 DIA. HOLES 9 REQ.



NOTICE TO PERSONS RECEIVING THIS DRAWING

THE TECHNICAL MATERIEL CORPORATION claims proprietary right in the material disclosed hereon. This drawing is issued in confidence for engineering information only and may not be reproduced or used to manufacture anything shown hereon without permission from THE TECHNICAL MATERIEL CORPORATION to the user. This drawing is loaned for mutual assistance and is subject to recall at any time.

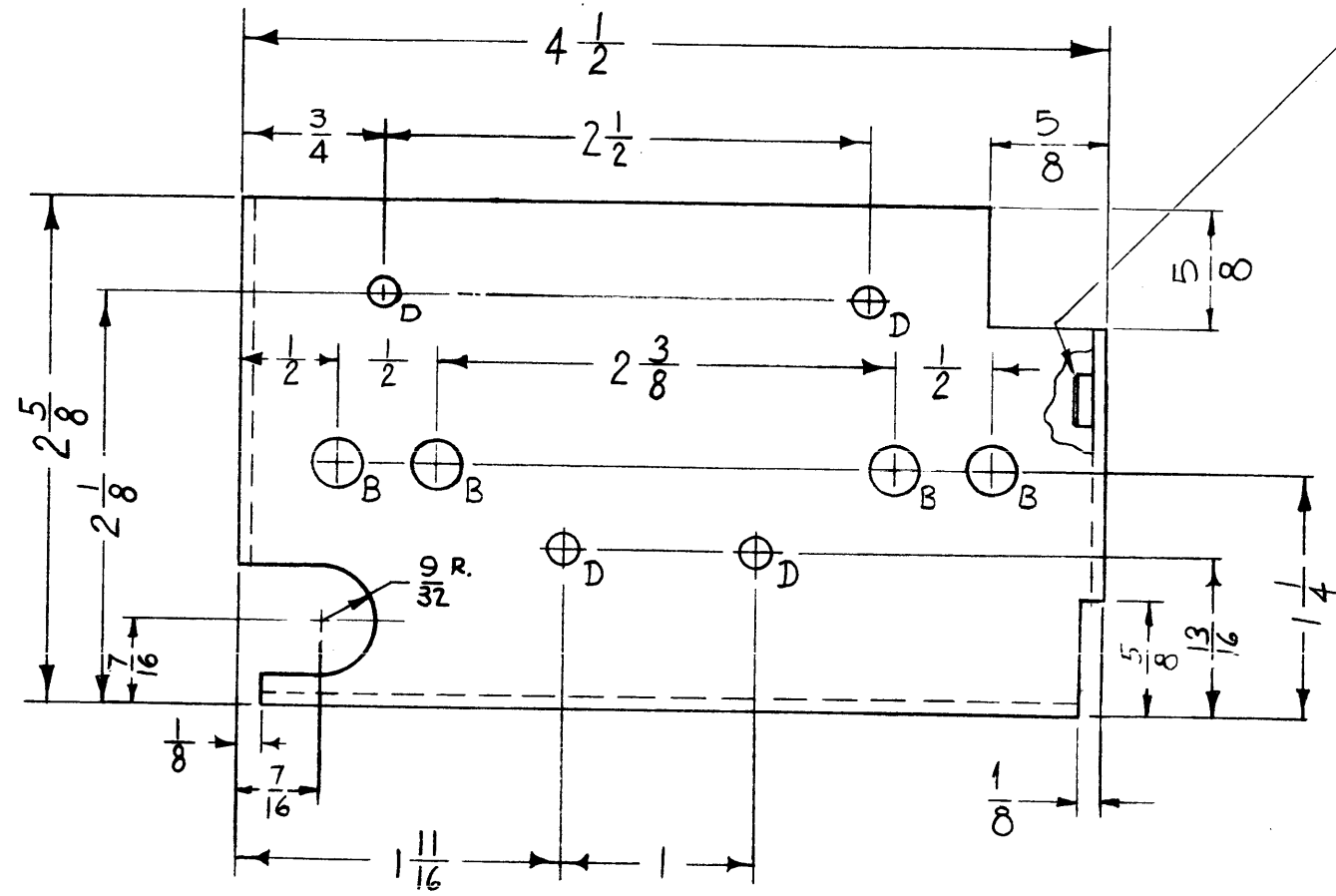
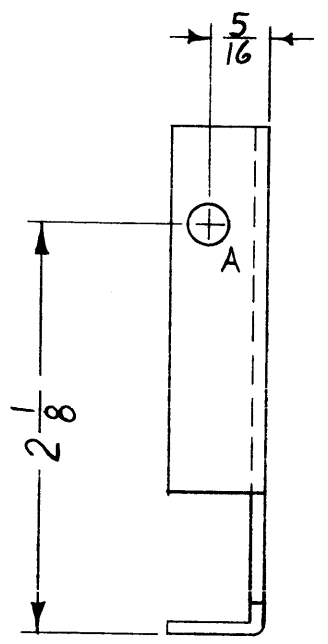
Property of:  
 THE TECHNICAL MATERIEL CORPORATION  
 MAMARONECK, NEW YORK

ISSUE	ITEM	CHANGED FROM	DATE	CH. NO.	DRAFTS	CHECKER	ENG. APP.
TOLERANCES			SCALE: $\frac{1}{4}$				
DEC. DIM. $\pm$			MAXIMUM ALLOWABLE TOLERANCES HAVE BEEN DETERMINED AND ANY DEVIATIONS WILL BE CAUSE FOR REJECTION. REMOVE ALL BURRS AND SHARP EDGES				
FRAC. DIM. $\pm \frac{1}{64}$							
ANGULAR DIM. $\pm$							

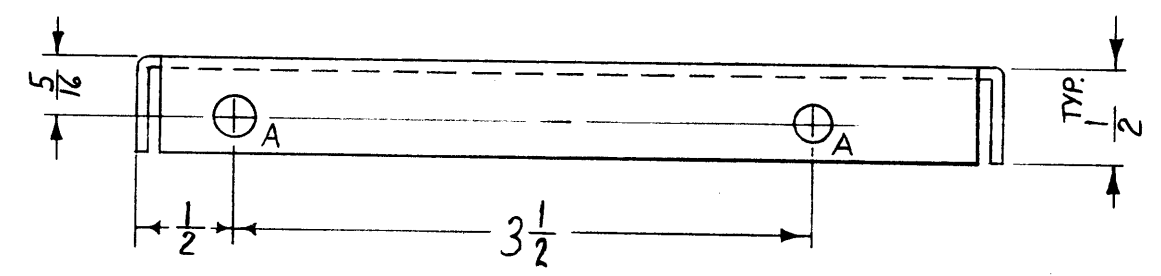
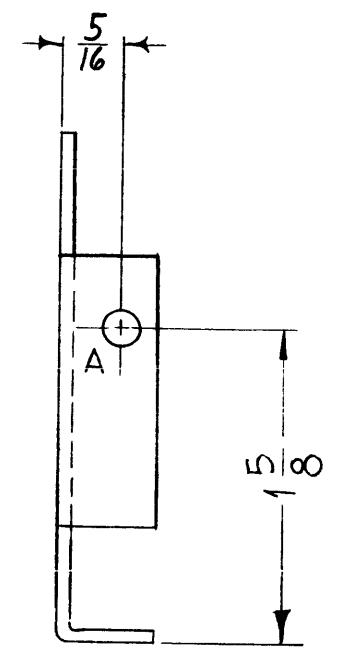
1	RAK-11		8-23-60
REQ. PER UNIT	MODEL	PROJECT NO.	ASS'Y. NO.
USED ON			

9	1	NT-129-8-32-6	SWAGE NUT	
REQ. ITEM	PART NO.		DESCRIPTION	SYMBOL
	.081		THE TECHNICAL MATERIEL CORP. MAMARONECK, NEW YORK	
	ALUMINUM		ADAPTER PLATE, BLOWER	
MATERIAL				
5052-H32			cu	fwc
TYPE & TEMPER		HEAT TREAT. SPEC.	DRAWN	CHECKED
S404 YELL. IRIDITE				FINAL APPROVAL
FINISH & SPEC. NO.			ELEC. DES. APP.	MECH. DES. APP.
				MS-2372





① MOUNT ITEM 1 (NT-129-632-4) IN ALL "A" HOLES AFTER FINISHING



- A~.191-.194 D. (FOR NT-129-632-4) 4 REQ.
- B~ 1/4 DIA. 4 "
- C- DELETED
- D~ 5/32 DIA. 4 "

NOTE: USE MATERIAL THICKNESS FOR MAX. RADII ON ALL BENDS UNLESS OTHERWISE SPECIFIED.  
REF: LD-842 (1)

4	1	NT-129-632-4	NUT, ROUND, SWAGE TYPE	
REQ. ITEM	PART NO.	DESCRIPTION		SYMBOL
		.064	THE TECHNICAL MATERIEL CORP. MAMARONECK, NEW YORK	
		ALUMINUM	SHIELD, PLUG	
		5052-H32		
		S404 YELL. IRIDITE		
		FINISH & SPEC. NO.	ELEC. DES. APP. MECH. DES. APP.	
			MS-2389 F	

ISSUE	ITEM	CHANGED FROM	DATE	CH. NO.	DRAFTS	CHECKER	ENG. APP.
F	2	1 (D) Hole Relocated (Upper Left)	2-24-61	4233	RU	JCS	[Signature]
F	1	9/32" Notch was 5/16" Hole	12-20-60	3745	M.A.F.	[Signature]	[Signature]
E	1	E HOLE WAS 5/16 D.	11-4-60	3377	[Signature]	[Signature]	[Signature]
D	2	DIM. 5/8 WAS 1/8 3 1/2 WAS 3	10-26-60	3310	J.C.B.	[Signature]	[Signature]
C	1	E HOLE WAS 1/2 "C" HOLE	10-17-60	3205	[Signature]	[Signature]	[Signature]
B	4	FOUR "D" HOLES ADDED					
B	3	FOUR "B" HOLES RELOCATED					
B	2	ONE "A" HOLE RELOCATED					
B	1	5/8 NOTCH ADDED					
A	1	REDRAWN & REVISED	10-7-60	#	[Signature]	[Signature]	[Signature]

PERSONS RECEIVING THIS DRAWING

THE TECHNICAL MATERIEL CORPORATION claims proprietary right in the material disclosed herein. This drawing is issued in confidence for engineering information only and may not be reproduced or used to manufacture anything shown herein without permission from THE TECHNICAL MATERIEL CORPORATION to the extent this drawing is loaned for mutual assistance and is subject to recall at any time.

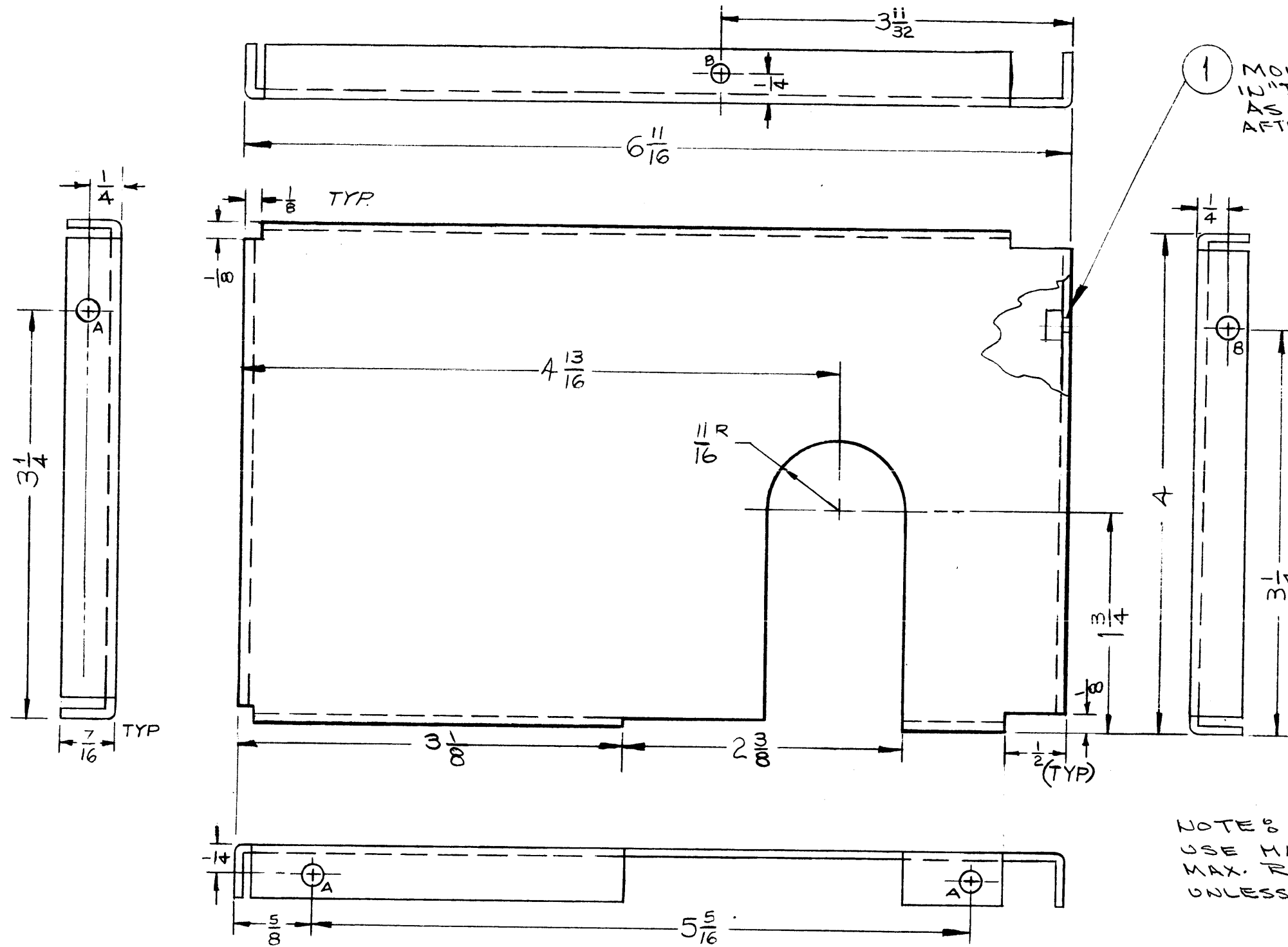
Property of:  
THE TECHNICAL MATERIEL CORPORATION  
MAMARONECK, NEW YORK

TOLERANCES  
DEC. DIM. ±  
FRAC. DIM. ±  
ANGULAR DIM. ±

SCALE: Do NOT SCALE  
MAXIMUM ALLOWABLE TOLERANCES HAVE BEEN DETERMINED AND ANY DEVIATIONS WILL BE CAUSE FOR REJECTION.  
REMOVE ALL BURRS AND SHARP EDGES

REQ. PER UNIT	CHG-1	MF/RF SECTION	10-7-60
	MODEL	PROJECT NO.	DATE
		ASS'Y. NO.	

USED ON



1 MOUNTED IN "B" HOLES AS SHOWN, AFTER FINISHING.

A -  $\frac{1}{64}$  DIA. — 3 REQ  
 B -  $\frac{.191}{.194}$  DIA. — 2 REQ  
 (FOR NT-129-632-4)

NOTE: NO PERSONS RECEIVING THIS DRAWING... THE TECHNICAL MATERIEL CORPORATION claims proprietary right in the material disclosed herein. This drawing is issued in confidence for engineering information only and may not be reproduced or used to manufacture anything shown herein without permission from THE TECHNICAL MATERIEL CORPORATION to the user. This drawing is loaned for mutual assistance and is subject to recall at any time.

Property of:  
 THE TECHNICAL MATERIEL CORPORATION  
 MAMARONECK, NEW YORK

NOTES  
 USE MATERIAL THICKNESS FOR MAX. RADIUS ON ALL BENDS, UNLESS OTHERWISE SPECIFIED.

ISSUE	ITEM	CHAN ED FROM	DATE	CH. NO.	DRAFTS	CHECKER	ENG. APP.
C	1	2 3/8 DIM. WAS 2 5/16	10/16/63	10190	<del>MD</del>	MIT	MYB
B	1	11/16 WAS 5/8 R.	11-21-60	3535	DM	GCB	
A	1	COMPLETE REVISION	10/11/60	3154	<del>MD</del>	KD	

TOLERANCES: DEC. DIM.  $\pm$ , PRAC. DIM.  $\pm 1/64$ , ANGULAR DIM.  $\pm$

SCALE:  $\frac{1}{4}$

MAXIMUM ALLOWABLE TOLERANCES HAVE BEEN DETERMINED AND ANY DEVIATIONS WILL BE CAUSE FOR REJECTION. REMOVE ALL BURRS AND SHARP EDGES

REQ. PER UNIT	MODEL	PROJECT NO.	ASS'Y. NO.	DATE
1	CHG 1	MF/RF		

USED ON

REQ. ITEM	PART NO.	DESCRIPTION	SYMBOL
2	1	NT129-632-4 NUT, ROUND, SWAGE TYP	
	.064	STOCK SIZE	
	ALUMINUM	MATERIAL	
	5052-H32	TYPE & TEMPER	
	S404 YELLOW IRIDITE	FINISH & SPEC. NO.	
		HEAT TREAT. SPEC.	
		DRAWN	
		CHECKED	
		FINAL APPROVAL	

THE TECHNICAL MATERIEL CORP. MAMARONECK, NEW YORK

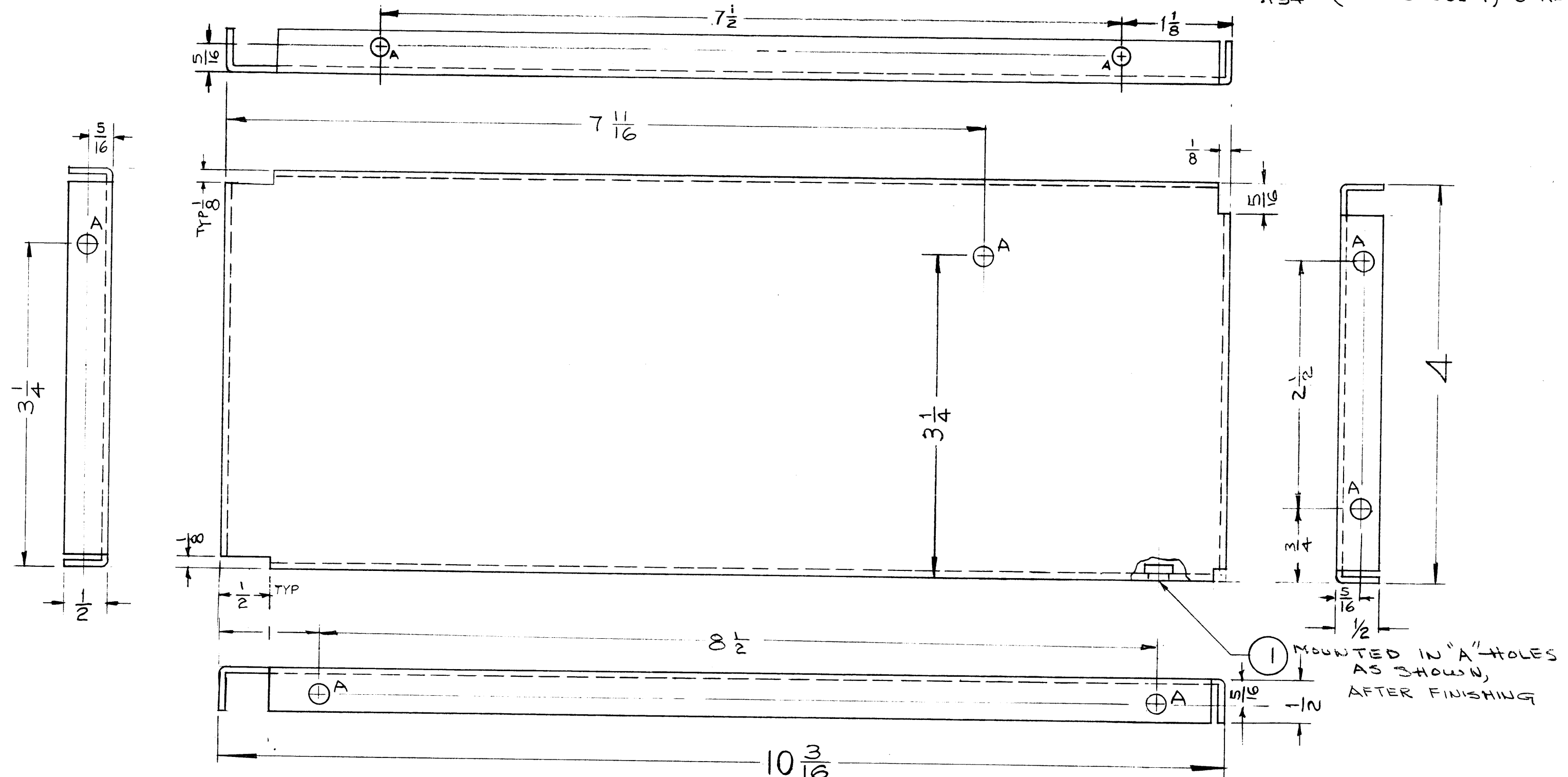
R.F. SHIELD INTERSTAGE

R0220 9-12-60

MS-2390 C

MS-239 | B

A-191  
.194 D (NT-129-632-4) 8 REQ



NOTE:  
USE MATERIAL THICKNESS  
FOR MAX. RADIUS ON ALL BENDS  
UNLESS OTHERWISE SPECIFIED.

ISSUE	ITEM	CHANGED FROM	DATE	CH. NO.	DRAFTS	CHECKER	ENG. APP.
B	1	① 1/2" NOTCH WAS 1/8	11-4-60	3379	<i>[Signature]</i>	<i>[Signature]</i>	<i>[Signature]</i>
A	1	2" A" HOLES ADDED LIPS WERE 7/16	10/11/60	3154	<i>[Signature]</i>	<i>[Signature]</i>	<i>[Signature]</i>

TOLERANCES: DEC. DIM. ±, FRAC. DIM. ± 1/64, ANGULAR DIM. ±

SCALE: FULL

MAXIMUM ALLOWABLE TOLERANCES HAVE BEEN DETERMINED AND ANY DEVIATIONS WILL BE CAUSE FOR REJECTION. REMOVE ALL BURRS AND SHARP EDGES

1	CHG-1	MF/RF		9-13-60
REQ. PER UNIT	MODEL	PROJECT NO.	ASS'Y. NO.	DATE
USED ON				

8	1	NT-129-632-4	NUT ROUND SWAGE TYPE
REQ. ITEM	PART NO.	DESCRIPTION	SYMBOL
.064		THE TECHNICAL MATERIEL CORP.	
STOCK SIZE		MAMARONECK, NEW YORK	
ALUMINUM		CENTER SHIELD, RF	
MATERIAL			
5052-H32		<i>[Signature]</i>	<i>[Signature]</i>
TYPE & TEMPER	HEAT TREAT. SPEC.	DRAWN	CHECKED
S-404 YELLOW IRIDITE		<i>[Signature]</i>	<i>[Signature]</i>
FINISH & SPEC. NO.	ELEC. DES. APP.	MECH. DES. APP.	
			MS-2391   B



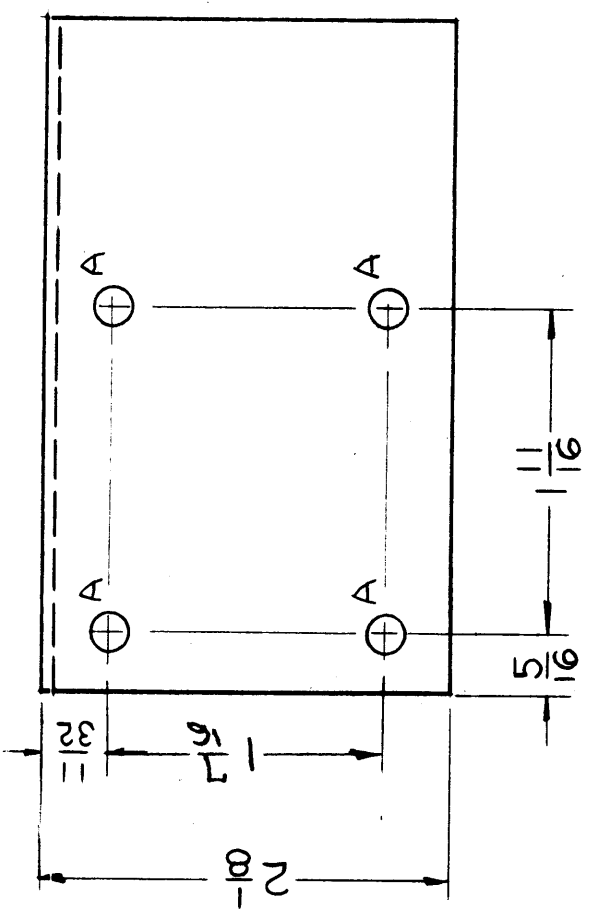






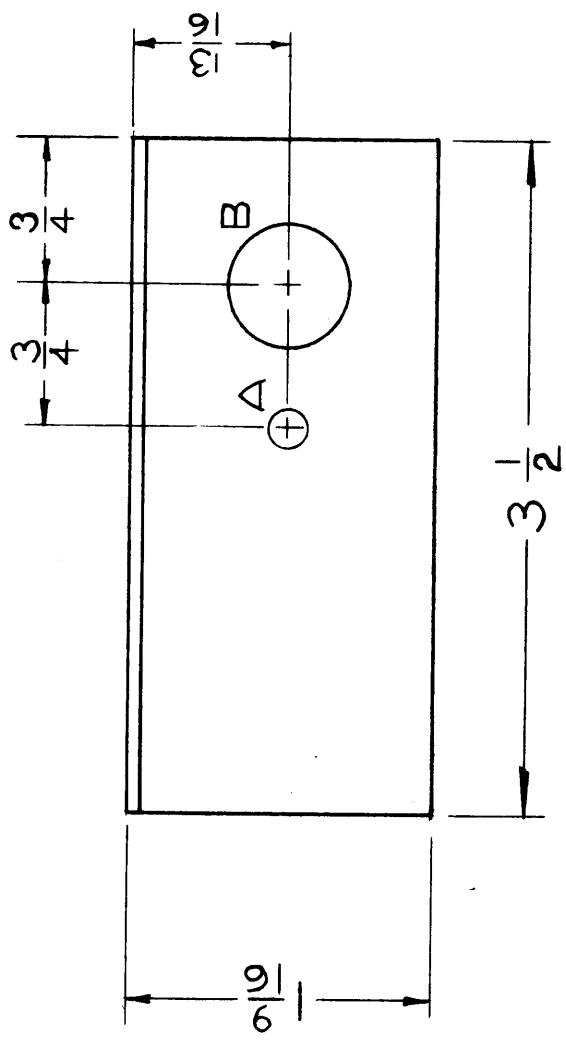


MS-2398 A



A ~ 3/16 DIA. HOLES 5 REQ.

B ~ 5/8 DIA HOLES 1 REQ.



**NOTICE TO PERSONS RECEIVING THIS DRAWING**  
 THE TECHNICAL MATERIEL CORPORATION claims  
 Proprietary Right in the material disclosed hereon.  
 This drawing is issued in confidence for engineering  
 information only and may not be reproduced or used  
 to manufacture anything shown hereon without per-  
 mission from THE TECHNICAL MATERIEL CORPORA-  
 TION to the user. This drawing is loaned for mutual  
 assistance and is subject to recall at any time.  
 Property of:  
 THE TECHNICAL MATERIEL CORPORATION  
 MAMARONECK, NEW YORK

DEC. DIM. ±	
FRAC. DIM. ± 1/64	
ANGULAR DIM. ±	
TOLERANCES	
SCALE: FULL	
MAXIMUM ALLOWABLE TOLERANCES HAVE BEEN DETERMINED AND ANY DEVIATIONS WILL BE CAUSE FOR REJECTION. REMOVE ALL BURRS AND SHARP EDGES	
ISSUE ITEM	CHANGED FROM
A 1	FINISH WAS S-174 BLUE GREY PAINT
DATE	7-5-63
CH. NO.	9402
DRAFTS	WJL
CHECKER	WJL
ENG. APP.	WJL

REQ. PER UNIT	1
MODEL	GPT - 40K
PROJECT NO.	
DATE	9-7-60
ASSY. NO.	
USED ON	

REQ. ITEM	PART NO.	DESCRIPTION	SYMBOL
	.064	THE TECHNICAL MATERIEL CORP. MAMARONECK, NEW YORK	
	STOCK SIZE		
	ALUMINUM	BRACKET, AIR SWITCH	
	MATERIAL		
5052-H32			
TYPE & TEMPER	HEAT TREAT. SPEC.		
S197-	BLACK SEMI-GLOSS BAKING ENAMEL		
	FINISH & SPEC. NO.		
		WJL	WJL
	DRAWN	CHECKED	FINAL APPROVAL
			MS-2398 A
			ELEC. DES. APP. MECH. DES. APP.