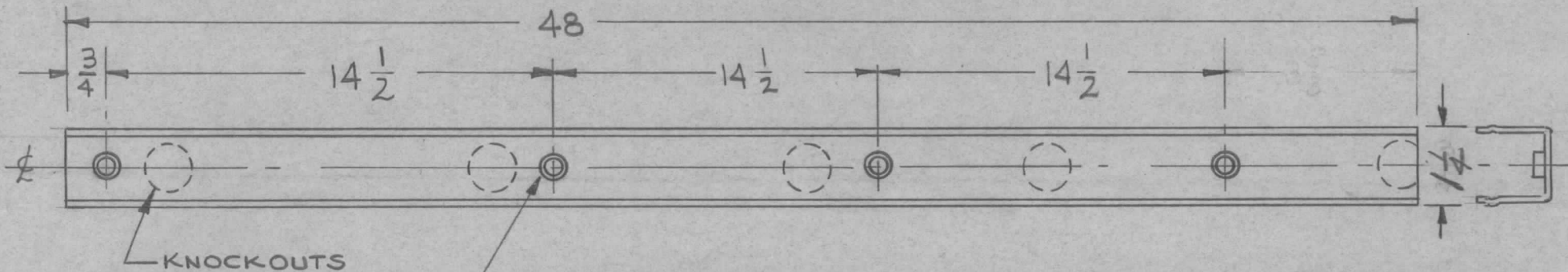


REQ. PER UNIT	USED ON			MS-2306	B
	MODEL	ASS'Y. NO.	DATE		
1	RAK-11				
1	RAK-12		7-17-62		



A-.191-194 DIA. HOLES (FOR NT-129-632-3) 4 REQ.

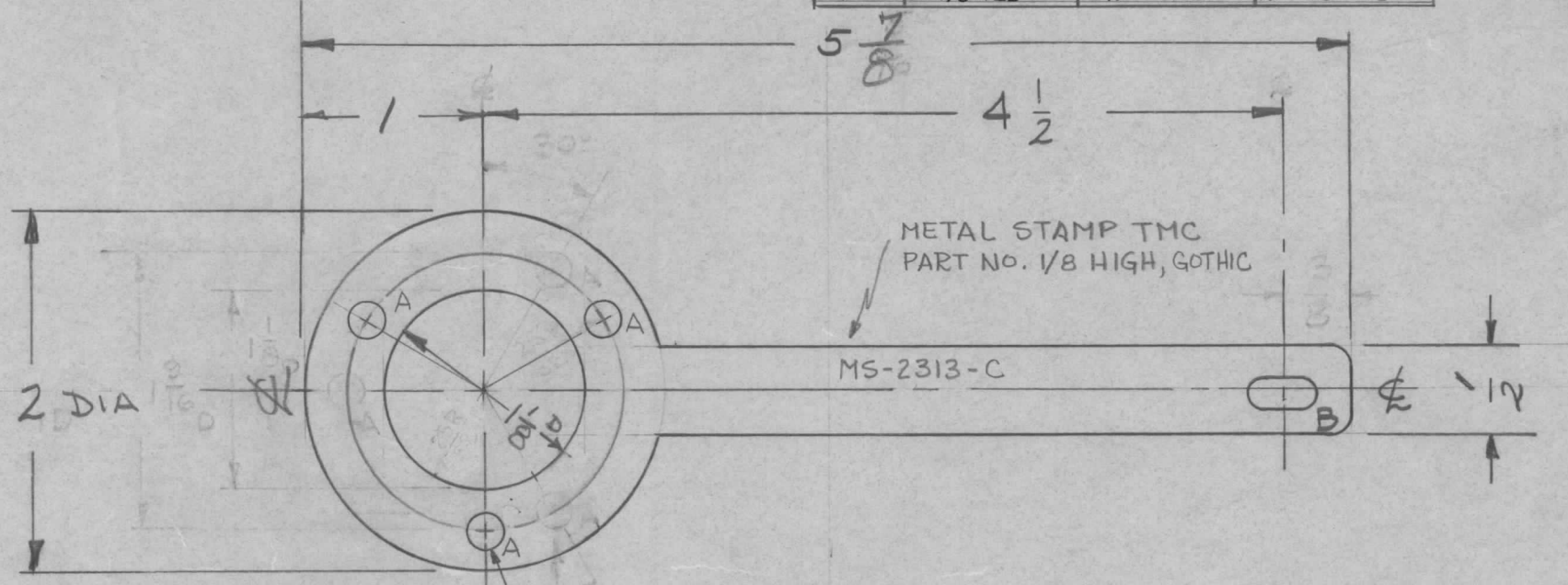
NOTE:

PIECES TO BE ORIENTED SO THAT A-HOLES WILL NOT APPEAR IN RANDOM KNOCKOUTS

REF. TMC # PO - 160

				4	1	NT-129-632-3	NUT ROUND, SWAGE TYPE				
REQ.	ITEM	PART NO.		DESCRIPTION			SYMBOL				
							THE TECHNICAL MATERIEL CORP.				
							MAMARONECK, NEW YORK				
							AC STRIP				
							MATERIAL				
							TYPE & TEMPER HEATTREAT.SPEC. DRAWN CHECKED FINAL APPROVAL				
							FINISH & SPEC. NO. ELEC. DES. APP MECH. DES. APP				
ISSUE ITEM		CHANGED FROM		DATE	CH. NO.	DRAFTS	CHECKER	ENG. APP.			
B	1	KNOCKOUTS & NOTE ADDED		11.3.64	12828	hjb	Flann	Sh			
A	1	Ⓐ Hole was .221 <sup>D. FOR</sup> NT-129-632-4		1-25-60	3969	RU	JCB	RK			
TOLERANCES				SCALE: <i>1/64</i>							
DEC. DIM. ± FRAC. DIM. ± ANGULAR DIM. ±				MAXIMUM ALLOWABLE TOLERANCES HAVE BEEN DETERMINED AND ANY DEVIATIONS WILL BE CAUSE FOR REJECTION. REMOVE ALL BURRS AND SHARP EDGES							
				MS-2306 B							

REQ. PER UNIT	USED ON			MS-2313	D
	MODEL	ASS'Y. NO.	DATE		
1	GPT-40K	AX-209	6-22-60		
1	GPT-40K ( ) 3 AS-120	AX-353	12-23-63		
1	GPT-40K ( ) 4 AS-125	AX-458	12-23-63		



A- 3/16 (.187) DIA - 3 REQ.  
 B- 3/16 X 3/8 SLOT 1 REQ.

UNLESS OTHERWISE SPECIFIED DIMENSIONS ARE IN INCHES AND INCLUDE CHEMICALLY APPLIED OR PLATED FINISHES		
DECIMALS	TOLERANCES	FRACTIONS
.X ± .05		± 1/64
.XX ± .01		ANGLES
.XXX ± .005		± 0° 30'

CUT HERE  
 GUARANTEED  
 2-66

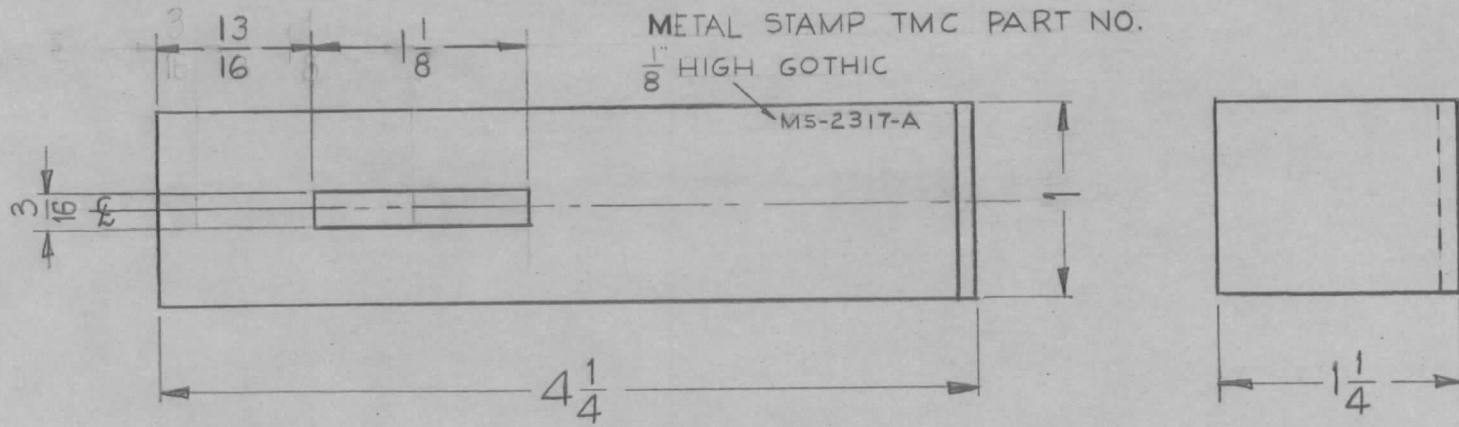
3 HOLES 3/16 DIA,  
 120° APART ON  
 25/32 RADIUS.

ISSUE	ITEM	CHANGED FROM	DATE	CH. NO.	DRAFTS	CHECKER	ENG. APP.	REQ. ITEM	PART NO.	DESCRIPTION	SYMBOL
D	1	DWG UPDATED	12/23/63	10642	file	file	file				
C	1	25/32 R. DELETED	1-11-63	8014	file	file	file	.040		THE TECHNICAL MATERIEL CORP. MAMARONECK, NEW YORK	
B	1	3(A) HOLES RELOCATED 30°	4-25-62	6639	LG	file	file	STOCK SIZE			
A	1	FINISH WAS GOLD PLATE .000025	11/21/61	5953	DM	aa	aa	COPPER		STRAP, ROTOR SHORTING	
TOLERANCES								MATERIAL			
SCALE:								1/2 H		TORILLO	
DEC. DIM. ±								TYPE & TEMPER		DRAWN	
FRAC. DIM. ±								HEATTREAT. SPEC.		CHECKED	
ANGULAR DIM. ±								SILVER PLATE S-245		FINAL APPROVAL	
MAXIMUM ALLOWABLE TOLERANCES HAVE BEEN DETERMINED AND ANY DEVIATIONS WILL BE CAUSE FOR REJECTION. REMOVE ALL BURRS AND SHARP EDGES								FINISH & SPEC. NO.		ELEC. DES. APP	
										MECH. DES. APP	
										MS-2313 D	





REQ. PER UNIT	USED ON			MS-2317	A
	MODEL	ASS'Y. NO.	DATE		
1	GPT-40K	AP-10Z	6-30-60		



UNLESS OTHERWISE SPECIFIED  
DIMENSIONS ARE IN INCHES AND INCLUDE  
CHEMICALLY APPLIED OR PLATED FINISHES

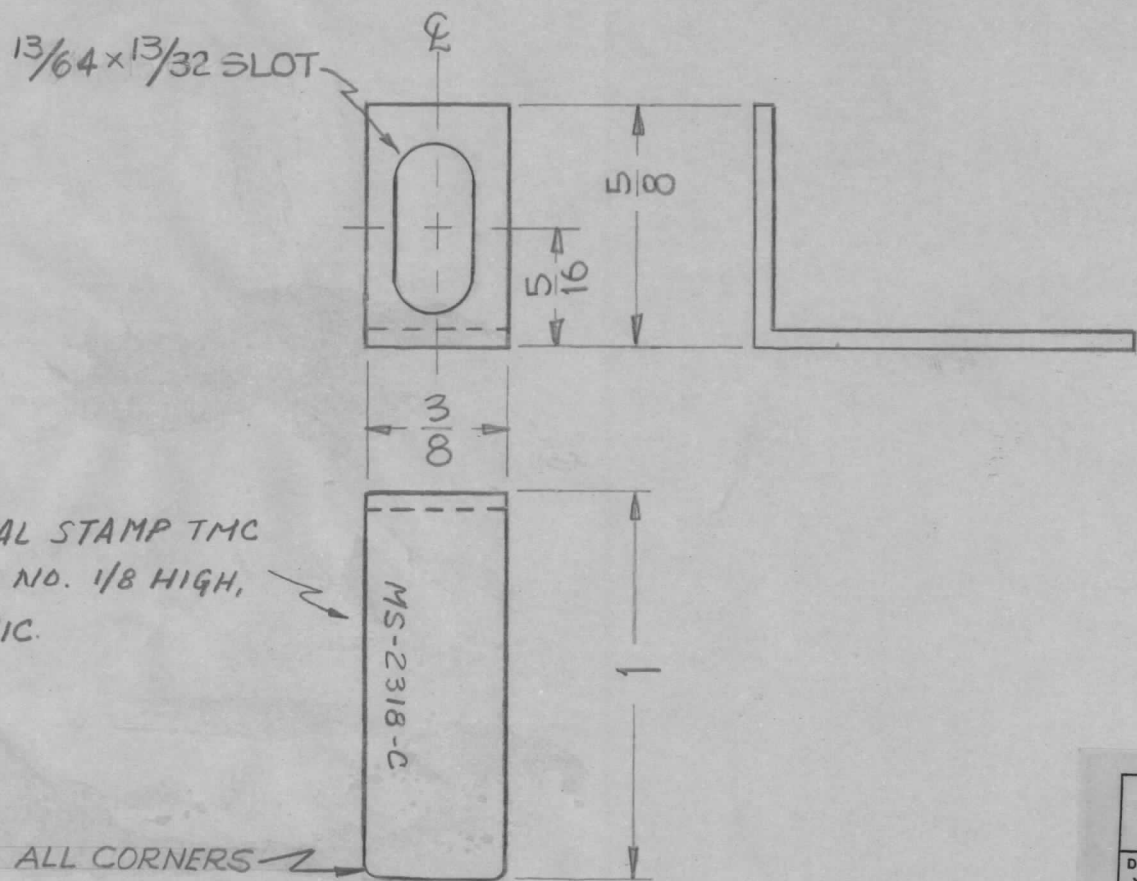
DECIMALS	TOLERANCES	FRACTIONS
.X ± .05		± 1/64
.XX ± .01		ANGLES
.XXX ± .005		± 0° 30'

CUT HERE  
GUARANTEED  
2-66

REQ.	ITEM	PART NO.	DESCRIPTION					SYMBOL
		.081	THE TECHNICAL MATERIEL CORP.					
		STOCK SIZE	MAMARONECK, NEW YORK					
		ALUMINUM	BRACKET, SWITCH ACTVATING,					
		MATERIAL	BIAS SUPPLY					
A	1	13/16 DIM. WAS 3/16	10-25-61	5749	EA	RU	LB	
ISSUE ITEM CHANGED FROM			DATE	CH. NO.	DRAFTS	CHECKER	ENG. APP.	
TOLERANCES			SCALE:					
DEC. DIM. ±			MAXIMUM ALLOWABLE TOLERANCES HAVE BEEN DETERMINED AND ANY DEVIATIONS WILL BE CAUSE FOR REJECTION.					
FRAC. DIM. ±			REMOVE ALL BURRS AND SHARP EDGES					
ANGULAR DIM. ±								
TYPE & TEMPER		HEAT TREAT. SPEC.	DRAWN		CHECKED		FINAL APPROVAL	
5404 Yellow Iridite			[Signature]		[Signature]		MS-2317	
FINISH & SPEC. NO.		ELEC. DES. APP	MECH. DES. APP		A			



REQ. PER. UNIT	USED ON			MS-2318	C
	MODEL	ASS'Y. NO.	DATE		
12	40K	AX-209	6-30-60		



UNLESS OTHERWISE SPECIFIED  
DIMENSIONS ARE IN INCHES AND INCLUDE  
CHEMICALLY APPLIED OR PLATED FINISHES

DECIMALS	TOLERANCES	FRACTIONS
.X ± .05		± 1/64
.XX ± .01		ANGLES
.XXX ± .005		± 0° 30'

CUT HERE  
GUARANTEED  
2-66

ISSUE	ITEM	CHANGED FROM	DATE	CH. NO.	DRAFTS	CHECKER	ENG. APP.	REQ. ITEM	PART NO.	DESCRIPTION	SYMBOL		
C	1	FINISH & SPEC WAS GOLD PLATE .000035	10-26-62	7513	GR	W.D.	W.D.		.031	THE TECHNICAL MATERIEL CORP. MAMARONECK, NEW YORK GRID CONNECTOR STRAP (FINAL TUBE)	MS-2318 C		
B	1	STOCK SIZE WAS .051	11-23-60	3507	W.A.F.	JCB	JCB		STOCK SIZE				
A	2	ROUND CORNERS ADDED	8/22/60	2851	RU	JCB	W.D.		COPPER				
A	1	SLOT WAS 7/16 X 13/64											
TOLERANCES			SCALE: DOUBLE SIZE										
DEC. DIM. ± FRAC. DIM. ± ANGULAR DIM. ±			MAXIMUM ALLOWABLE TOLERANCES HAVE BEEN DETERMINED AND ANY DEVIATIONS WILL BE CAUSE FOR REJECTION. REMOVE ALL BURRS AND SHARP EDGES					TYPE & TEMPER HEAT TREAT. SPEC. SILVER, PLATE S243 CLEAR IRIDITE S423		DRAWN CHECKED W.D. JCB		FINAL APPROVAL MS-2318 C	
								FINISH & SPEC. NO.		ELEC. DES. APP. MECH. DES. APP.			

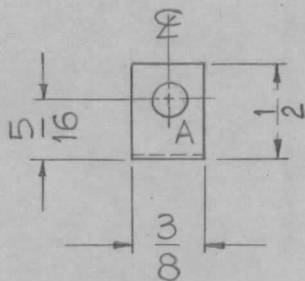
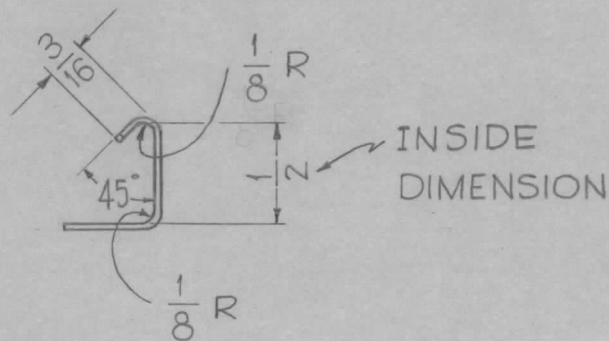
A -  $\frac{11}{64}$  DIA.

1 REQ.

REQ. PER UNIT	USED ON		
	MODEL	ASS'Y. NO.	DATE
24	GPT 40K	AS-117	7-1-60

MS-2323 B

NOTCH THESE CORNERS ONLY.



UNLESS OTHERWISE SPECIFIED DIMENSIONS ARE IN INCHES AND INCLUDE CHEMICALLY APPLIED OR PLATED FINISHES

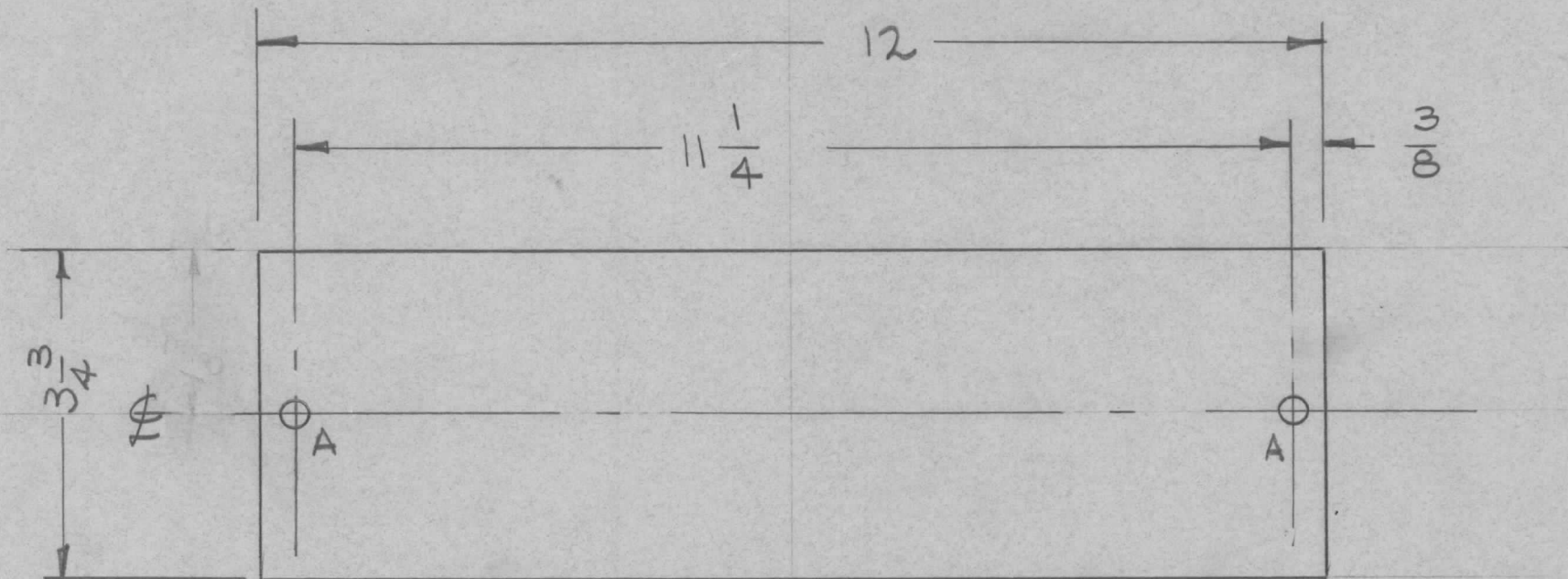
DECIMALS	FRACTIONS
.X ± .05	± 1/64
.XX ± .01	ANGLES
.XXX ± .005	± 0° 30'

TOLERANCES

CUT HERE GUARANTEED 2-66

REG.	ITEM	PART NO.	DESCRIPTION				SYMBOL
		.031	THE TECHNICAL MATERIEL CORP.				
		STOCK SIZE	MAMARONECK, NEW YORK				
		BRASS	CLIP, RESISTOR				
		MATERIAL					
B	1	FINISH Was .000025, GOLD PLATE	7-6-61	5181	D.L.G.	RU	LB
A	1	1/2" Dim. Added	6-20-61	5088	W.U.F.	JCK	2-D
ISSUE	ITEM	CHANGED FROM	DATE	CH. NO.	DRAFTS	CHECKER	ENG. APP.
TOLERANCES			SCALE: FULL ~ DO NOT SCALE ~				
DEC. DIM. ±			MAXIMUM ALLOWABLE TOLERANCES HAVE BEEN DETERMINED AND ANY DEVIATIONS WILL BE CAUSE FOR REJECTION.				
FRAC. DIM. ± 1/64			REMOVE ALL BURRS AND SHARP EDGES				
ANGULAR DIM. ±			TYPE & TEMPER		HEAT TREAT. SPEC.	DRAWN	CHECKED
			S-245 SILVER PLATE				
			S-423 SILVER-KOTE IRIDITE				
			FINISH & SPEC. NO.		ELEC. DES. APP	MECH. DES. APP	MS-2323 B

REQ. PER UNIT	USED ON			MS-2326
	MODEL	ASS'Y. NO.	DATE	
1	GPT-40K	AX-214	7-19-60	



A ~ 5/16 (.312) DIA. 2 REQ.

UNLESS OTHERWISE SPECIFIED DIMENSIONS ARE IN INCHES AND INCLUDE CHEMICALLY APPLIED OR PLATED FINISHES		
DECIMALS	TOLERANCES	FRACTIONS
.X ± .05		± 1/64
.XX ± .01		ANGLES
.XXX ± .005		± 0° 30'

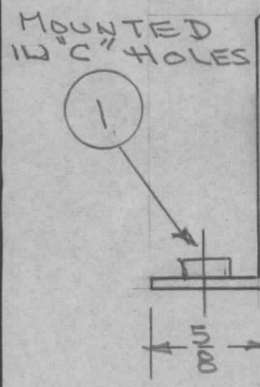
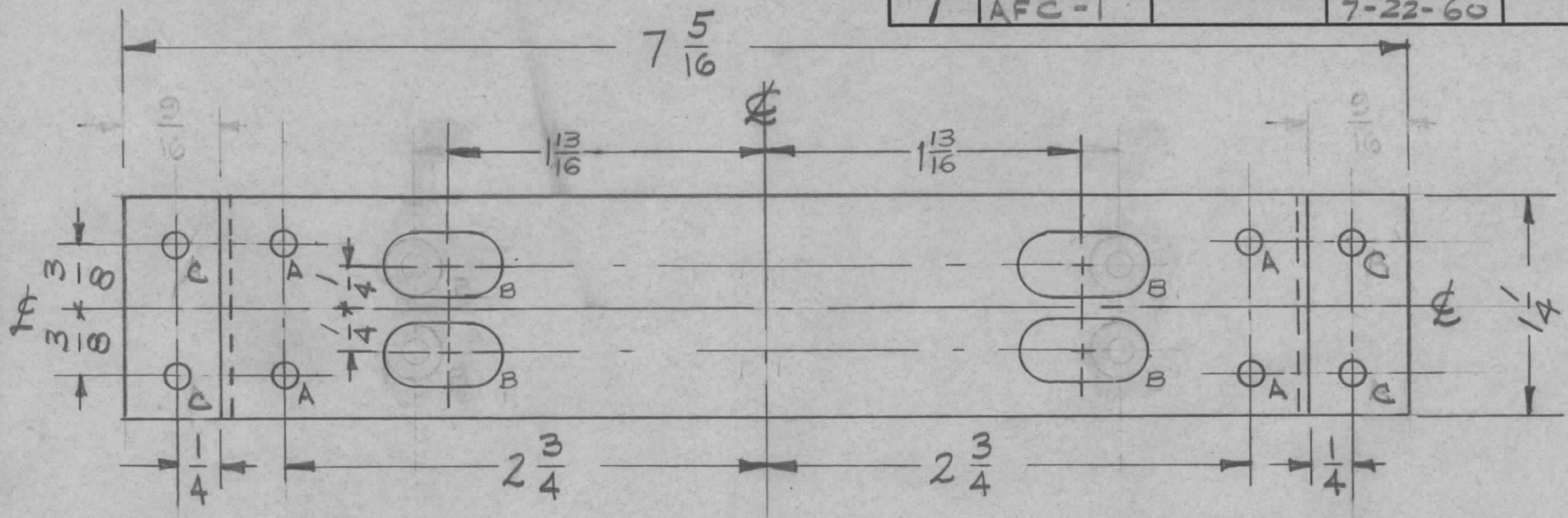
CUT HERE  
GUARANTEED  
2-66

REF: (8) MS-1999

REQ.	ITEM	PART NO.	DESCRIPTION				SYMBOL
		1/8	THE TECHNICAL MATERIEL CORP.				
		STOCK SIZE	MAMARONECK, NEW YORK				
		ALUMINUM	COVER, PLATE				
		MATERIAL					
ISSUE	ITEM	CHANGED FROM	DATE	CH. NO.	DRAFTS	CHECKER	ENG. APP.
TOLERANCES			SCALE:				
DEC. DIM. ±			MAXIMUM ALLOWABLE TOLERANCES HAVE BEEN DETERMINED AND ANY DEVIATIONS WILL BE CAUSE FOR REJECTION. REMOVE ALL BURRS AND SHARP EDGES				
FRAC. DIM. ±							
ANGULAR DIM. ±							
5052 H32		TYPE & TEMPER		HEAT TREAT. SPEC.		DRAWN	
		S404-YEL IRIDITE				CHECKED	
		FINISH & SPEC. NO.		ELEC. DES. APP		MECH. DES. APP	
						MS-2326	



REQ. PER UNIT	USED ON			MS-2332	A
	MODEL	ASS'Y. NO.	DATE		
1	AFC-1		7-22-60		



A - 9/64 DIA 4 REQ  
 B - 3/8 X 3/4 SLOTS 4 REQ  
 C - .191 / .194 D (NT-129-032-4) 4 REQ

A - 9/64 (.140) DIA 3 REQ  
 B - 3/8 X 3/4 SLOTS 4 REQ

CUT HERE  
 2-66  
 GUARANTEED  
 UNLESS OTHERWISE SPECIFIED  
 DIMENSIONS ARE IN INCHES AND INCLUDE  
 CHEMICALLY APPLIED OR PLATED FINISHES  
 DECIMALS  
 .X ± .05  
 .XX ± .01  
 .XXX ± .005  
 FRACTIONS  
 ± 1/64  
 ANGLES  
 ± 0° 30'

REQ.	ITEM	PART NO.	DESCRIPTION	SYMBOL
4	1	NT-129-032-4	SWAGE NUT, ROUND TYPE	
			.064	
			STOCK SIZE	
			ALUMINUM	
			MATERIAL	
			5052-H32	
			TYPE & TEMPER	
			S40A YEL. IRIDITE	
			HEATTREAT. SPEC.	
			DRAWN	
			CHECKED	
			FINAL APPROVAL	
			MS-2332	A
			ELEC. DES. APP	
			MECH. DES. APP	

A 2 ITEM 1 ADDED  
 1 13/16 WAS 2  
 1 "B" SLOTS WERE 5/16D  
 8/18/60 2796 WP Jde JFM

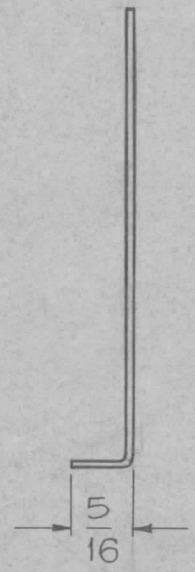
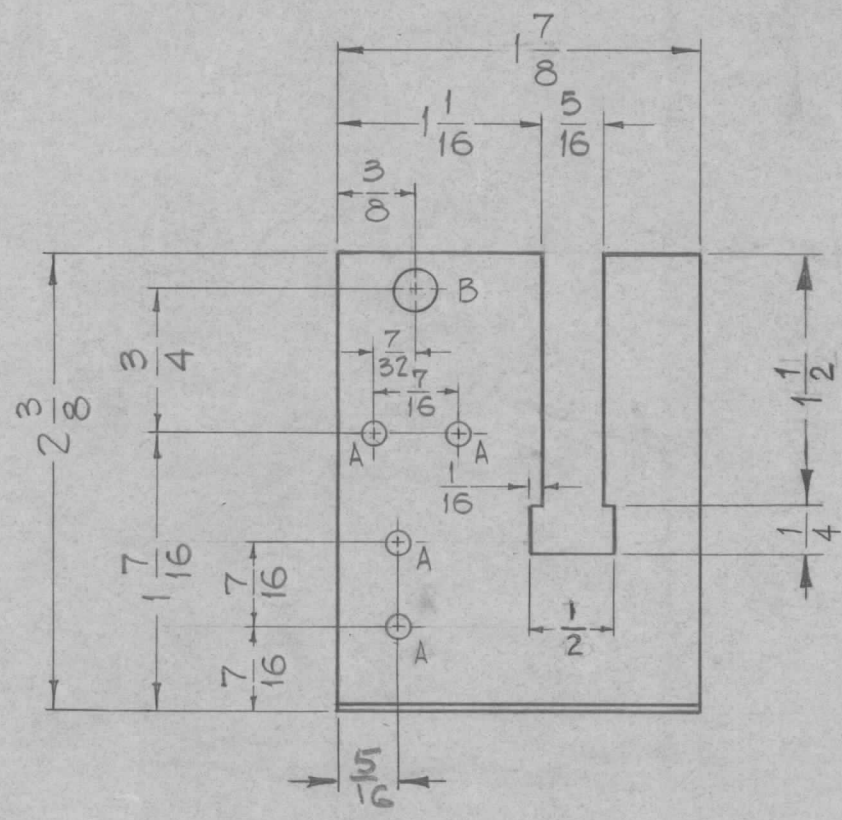
ISSUE ITEM CHANGED FROM DATE CH. NO. DRAFTS CHECKER ENG. APP.  
 TOLERANCES SCALE: H

DEC. DIM. ±  
 FRAC. DIM. ±  
 ANGULAR DIM. ±  
 MAXIMUM ALLOWABLE TOLERANCES HAVE BEEN DETERMINED AND ANY DEVIATIONS WILL BE CAUSE FOR REJECTION. REMOVE ALL BURRS AND SHARP EDGES

REQ. PER UNIT	USED ON		
	MODEL	ASS'Y. NO.	DATE
1	DVM-2		8-5-60
1	DVM-4		2-8-62

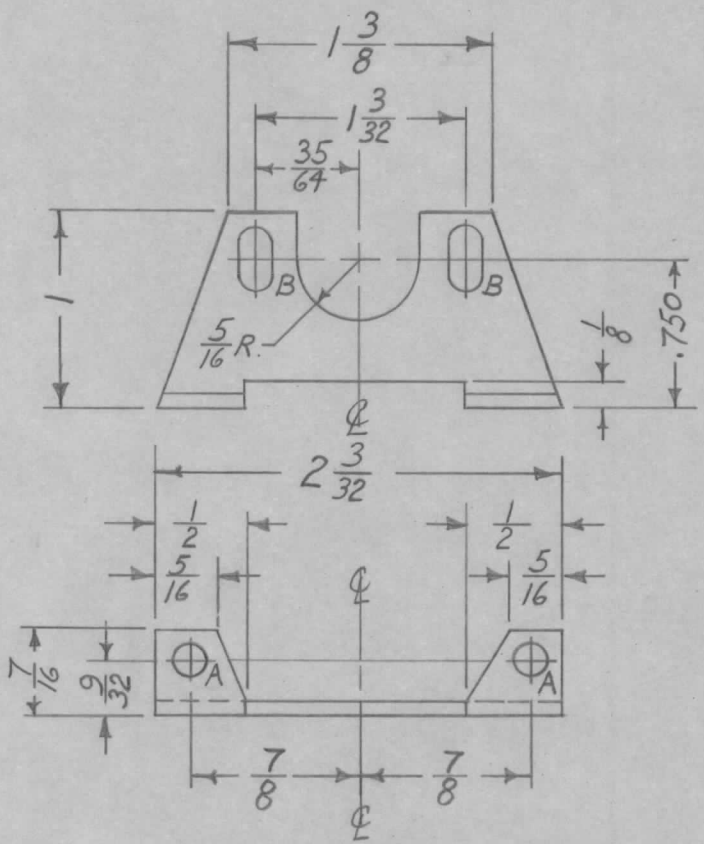
MS-2333 C

A -  $\frac{1}{8}$  DIA. 4 REQ.  
 B -  $\frac{7}{32}$  DIA. 1 REQ.



ISSUE	ITEM	CHANGED FROM	DATE	CH. NO.	DRAFTS	CHECKER	ENG. APP.	REQ. ITEM	PART NO.	DESCRIPTION	SYMBOL		
C	1	1/2 DIM WAS 7/16	10/4/63	10179						<b>THE TECHNICAL MATERIEL CORP.</b> <b>MAMARONECK, NEW YORK</b> PLATE, COMPONENT MOUNTING	C		
B	1	5/16 DIM ADDED ON 'A' HOLES	7-9-63	9522				.029	STOCK SIZE				
A	1	DIMS FOR NOTCH 1/4, 1 1/2 ADDED	6-23-61	5111				COPPER	MATERIAL				
TOLERANCES DEC. DIM. $\pm$ FRAC. DIM. $\pm$ 1/64 ANGULAR DIM. $\pm$								SCALE: FULL (DO NOT SCALE)					
MAXIMUM ALLOWABLE TOLERANCES HAVE BEEN DETERMINED AND ANY DEVIATIONS WILL BE CAUSE FOR REJECTION: REMOVE ALL BURRS AND SHARP EDGES								1/2 H		J.C. Biele			
								TYPE & TEMPER	HEATTREAT. SPEC.	DRAWN	CHECKED	FINAL APPROVAL	
								HOT TIN DIP					
								FINISH & SPEC. NO.	ELEC. DES. APP	MECH. DES. APP			
												MS-2333 C	

REQ. PER. UNIT	USED ON			MS-2337
	MODEL	ASS'Y. NO.	DATE	
1	CMO	AO-103	7-27-60	

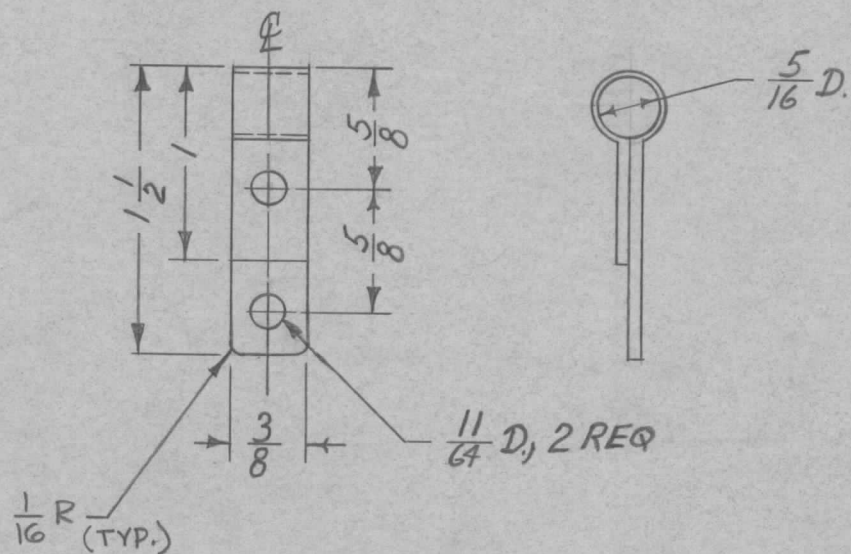


A -  $\frac{11}{64}$  DIA. 2 REQ.  
 B -  $\frac{11}{64} \times \frac{11}{32}$  SLOT 2 REQ.

REQ.	ITEM	PART NO.	DESCRIPTION		SYMBOL						
		.064	THE TECHNICAL MATERIEL CORP.								
		STOCK SIZE	MAMARONECK, NEW YORK								
		ALUMINUM	BRACKET, CONDENSER								
		MATERIAL	(CB-121)								
ISSUE	ITEM	CHANGED FROM	DATE	CH. NO.	DRAFTS	CHECKER	ENG. APP.				
TOLERANCES			SCALE: FULL			5052-H32					
DEC. DIM. $\pm$			MAXIMUM ALLOWABLE TOLERANCES HAVE BEEN DETERMINED AND ANY DEVIATIONS WILL BE CAUSE FOR REJECTION. REMOVE ALL BURRS AND SHARP EDGES			TYPE & TEMPER	HEAT TREAT. SPEC.	DRAWN	CHECKED	FINAL APPROVAL	
FRAC. DIM. $\pm$ 1/64						5404 YELL. IRIDITE					
ANGULAR DIM. $\pm$						FINISH & SPEC. NO.	ELEC. DES. APP	MECH. DES. APP			MS-2337



REQ. PER UNIT	USED ON			MS-2342	C
	MODEL	ASS'Y. NO.	DATE		
2	GPT-40K	AX-209	7-29-60		



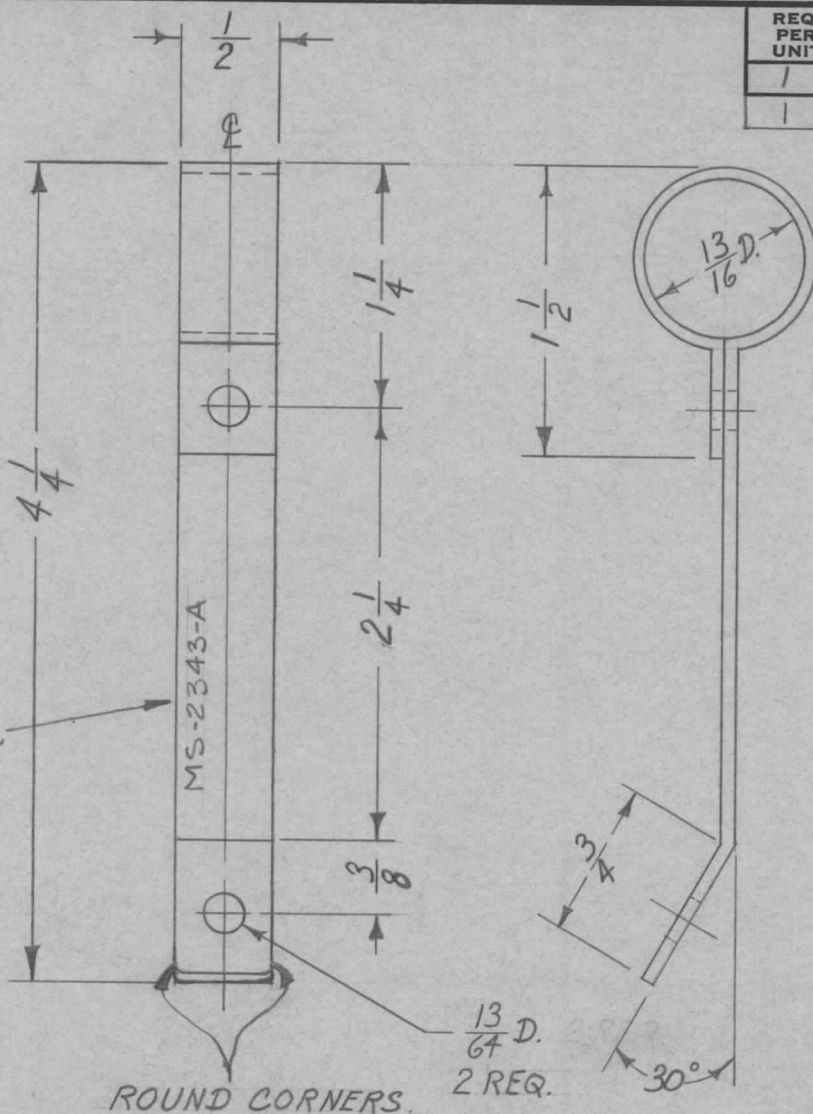
NOTICE TO PERSONS RECEIVING THIS DRAWING

THE TECHNICAL MATERIEL CORPORATION claims proprietary right in the material disclosed hereon. This drawing is issued in confidence for engineering information only and may not be reproduced or used to manufacture anything shown hereon without permission from THE TECHNICAL MATERIEL CORPORATION to the user. This drawing is loaned for mutual assistance and is subject to recall at any time.

Property of:  
**THE TECHNICAL MATERIEL CORPORATION**  
 MAMARONECK, NEW YORK

ISSUE	ITEM	CHANGED FROM	DATE	CH. NO.	DRAFTS	CHECKER	ENG. APP.	REQ.	ITEM	PART NO.	DESCRIPTION	SYMBOL				
C	1	1/16 R. ADDED	3-7-63	8432	<i>[Signature]</i>	<i>[Signature]</i>	<i>[Signature]</i>				<b>THE TECHNICAL MATERIEL CORP.</b> MAMARONECK, NEW YORK <i>STRAP, CONNECTING, 3MMF</i> <i>METERING CAPACITOR</i>	C				
B	1	FINISH & SPEC. NO. WAS GOLD PL. 0000 25	1-29-63	8131	G.D.L.	<i>[Signature]</i>	<i>[Signature]</i>			.015						
A	1	STOCK SIZE WAS .031	10-26-62	7560	<i>[Signature]</i>	<i>[Signature]</i>	<i>[Signature]</i>			COPPER						
										MATERIAL						
TOLERANCES			SCALE: FULL													
DEC. DIM. ±			MAXIMUM ALLOWABLE TOLERANCES HAVE BEEN DETERMINED AND ANY DEVIATIONS WILL BE CAUSE FOR REJECTION. REMOVE ALL BURRS AND SHARP EDGES					TYPE & TEMPER		HEAT TREAT. SPEC.		DRAWN	CHECKED	FINAL APPROVAL		
FRAC. DIM. ± 1/64								S-245 SILVER PLATE		S-423 SILVER KOTE IRIDITE				<i>[Signature]</i>	<i>[Signature]</i>	MS-2342
ANGULAR DIM. ±								FINISH & SPEC. NO.		ELEC. DES. APP		MECH. DES. APP				

REQ. PER UNIT	USED ON			MS-2343	A
	MODEL	ASS'Y. NO.	DATE		
1	GPT-40K	AX-209	8-1-60		
1	GPT-40K()3	AX-275	2-21-63		



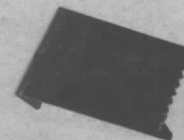
METAL STAMP  
TMC PART NO.  
1/8 HIGH, GOTHIC

MS-2343-A

ROUND CORNERS.

13/64 D.  
2 REQ.

30°



ISSUE	ITEM	CHANGED FROM	DATE	CH. NO.	DRAFTS	CHECKER	ENG. APP.	REQ.	ITEM	PART NO.	DESCRIPTION	SYMBOL	
										.031	THE TECHNICAL MATERIEL CORP. MAMARONECK, NEW YORK		
										STOCK SIZE			
A	1	FINISH & SPEC WAS GOLD PLATE .000025	2-21-63	8310						COPPER	STRAP, CONNECTING, PLATE METERING CAPACITOR		
										MATERIAL			
TOLERANCES			SCALE:										
DEC. DIM. ±			MAXIMUM ALLOWABLE TOLERANCES HAVE BEEN DETERMINED AND ANY DEVIATIONS WILL BE CAUSE FOR REJECTION. REMOVE ALL BURRS AND SHARP EDGES					TYPE & TEMPER		HEAT TREAT. SPEC.	DRAWN	CHECKED	FINAL APPROVAL
FRAC. DIM. ± 1/64								S-245 SILVER PLATE		S-423 IRIDITE		LB	
ANGULAR DIM. ±								FINISH & SPEC. NO.		ELEC. DES. APP	MECH. DES. APP		

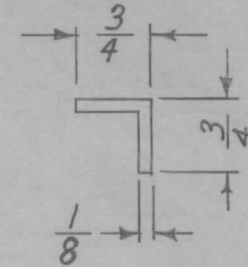
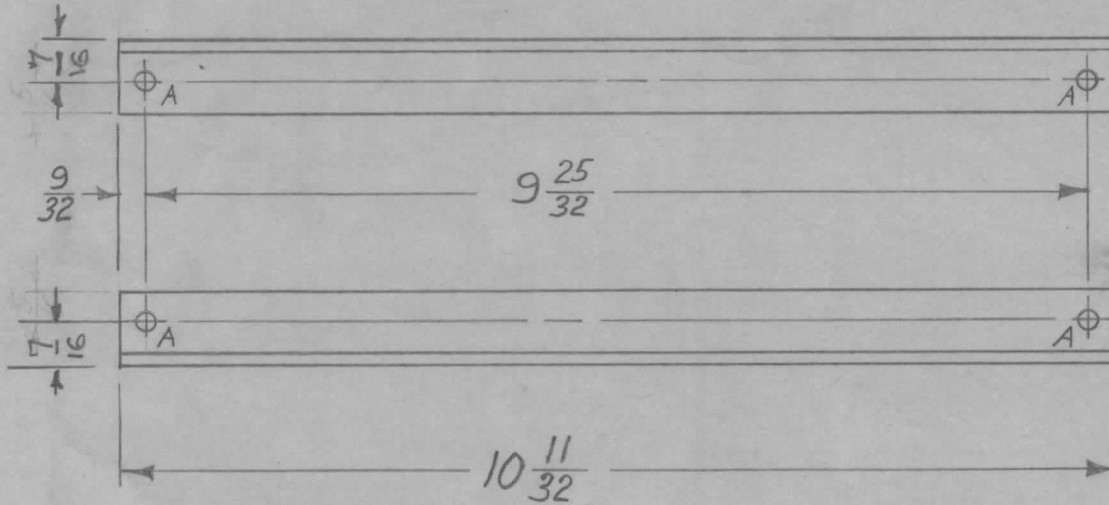
A -  $\frac{1}{4}$  DIA.

4 REQ.

REQ. PER UNIT	USED ON		
	MODEL	ASSY. NO.	DATE
1	CMD-1		8-8-60
1	CMO-2		8-8-60

MS-2348

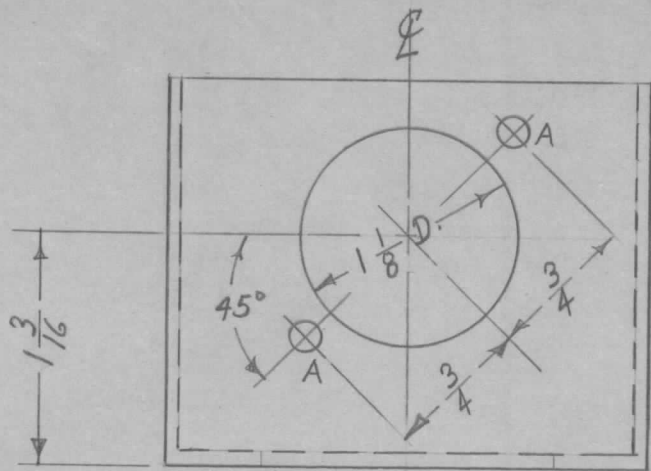
B



ISSUE		ITEM	CHANGED FROM	DATE	CH. NO.	DRAFTS	CHECKER	ENG. APP.	REQ.	ITEM	PART NO.	DESCRIPTION	SYMBOL				
B	1		HOLES WERE $\frac{1}{64}$ DIA.	1-10-62	6158	LL	<i>[Signature]</i>	<i>[Signature]</i>				THE TECHNICAL MATERIEL CORP. MAMARONECK, NEW YORK STIFFENER, REAR	B				
A	1		TYPE & TEMPER WAS 5052-H-32	33061	4536	NAF	<i>[Signature]</i>	<i>[Signature]</i>									
TOLERANCES		SCALE: $\frac{1}{2}$			6063-T5												
DEC. DIM. $\pm$				MAXIMUM ALLOWABLE TOLERANCES HAVE BEEN DETERMINED AND ANY DEVIATIONS WILL BE CAUSE FOR REJECTION.				TYPE & TEMPER		HEATTREAT. SPEC.		DRAWN		CHECKED		FINAL APPROVAL	
FRAC. DIM. $\pm \frac{1}{64}$				REMOVE ALL BURRS AND SHARP EDGES				S404 YELL. IRIDITE				<i>[Signature]</i>		<i>[Signature]</i>		MS-2348	
ANGULAR DIM. $\pm$								FINISH & SPEC. NO.		ELEC. DES. APP		MECH. DES. APP					



REQ. PER. UNIT	USED ON			MS-2349	B
	MODEL	ASS'Y. NO.	DATE		
1	CMO-1		8-8-60		
1	CMO-2		8-8-60		

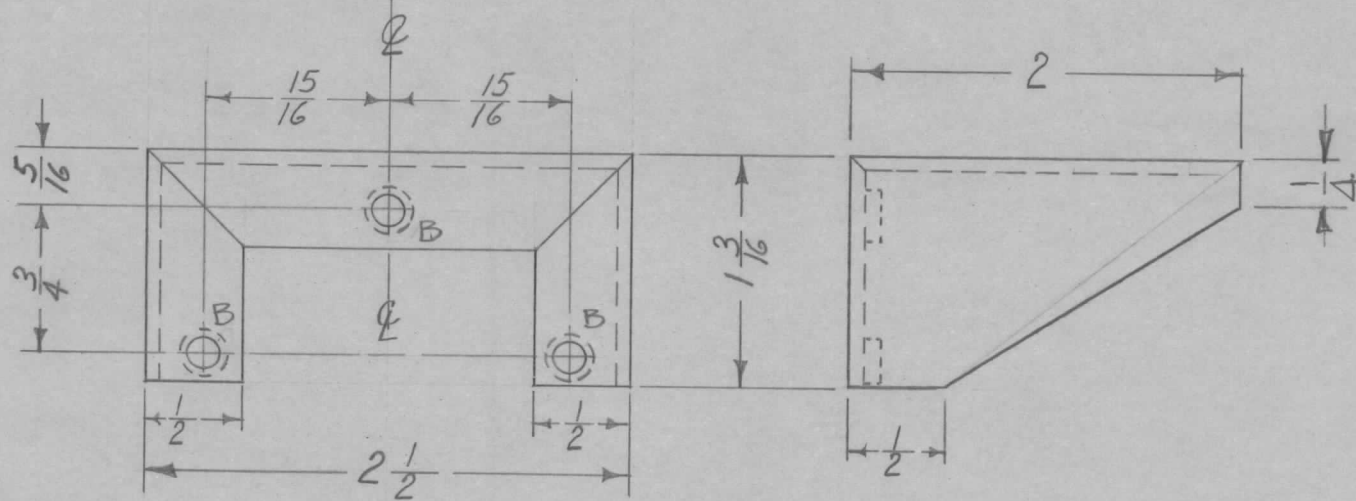


A -  $\frac{5}{32} \text{ DIA}$

2 REQ.

B - .191-.194 DIA  
(SEE ITEM 1)

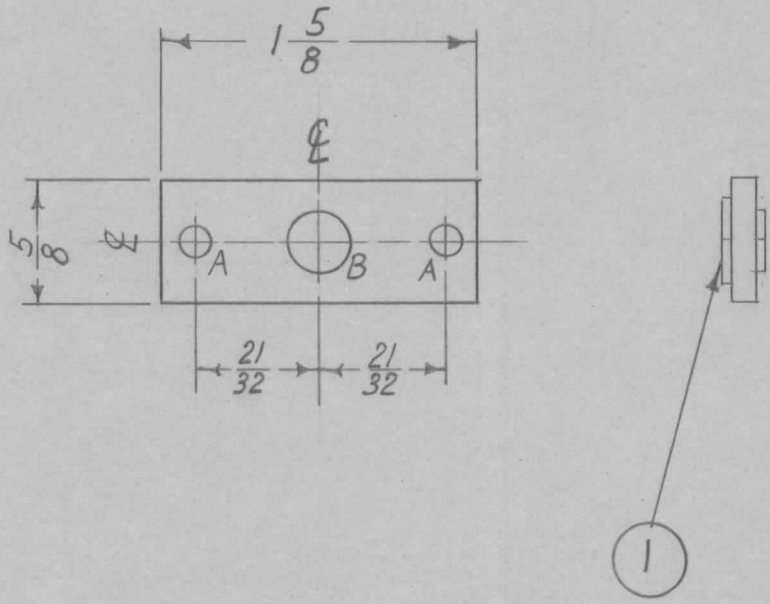
3 REQ.



							3	1	NT-129-632-4	NUTS SWAGE TYPE					
							REQ. ITEM	PART NO.			DESCRIPTION		SYMBOL		
							.081			THE TECHNICAL MATERIEL CORP.					
							STOCK SIZE			MAMARONECK, NEW YORK					
							ALUMINUM			BRACKET, RELAY MOUNTING					
							MATERIAL								
							5052-H32			  					
							TYPE & TEMPER			HEATTREAT. SPEC.			DRAWN	CHECKED	FINAL APPROVAL
							S404 YELL. IRIDITE						J.D.	[unclear]	MS-2349
							FINISH & SPEC. NO.			ELEC. DES. APP			MECH. DES. APP		B
B	1	1/4" DROP added to Side View Lip ANGLE	3/16/61	4430	DJM	JCB	[unclear]								
A		ITEM 1 added "3" A" holes Now "B" holes	9/27/60	3082	DJM	JCB	[unclear]								
ISSUE	ITEM	CHANGED FROM	DATE	CH. NO.	DRAFTS	CHECKER	ENG. APP.								
TOLERANCES			SCALE: FULL												
DEC. DIM. ±			MAXIMUM ALLOWABLE TOLERANCES HAVE BEEN DETERMINED AND ANY DEVIATIONS WILL BE CAUSE FOR REJECTION.												
FRAC. DIM. ± 1/64			REMOVE ALL BURRS AND SHARP EDGES												
ANGULAR DIM. ±															

REQ. PER UNIT	USED ON			MS-2355	A
	MODEL	ASS'Y. NO.	DATE		
1	CMO-1		8-8-60		
1	CMO-2		8-8-60		

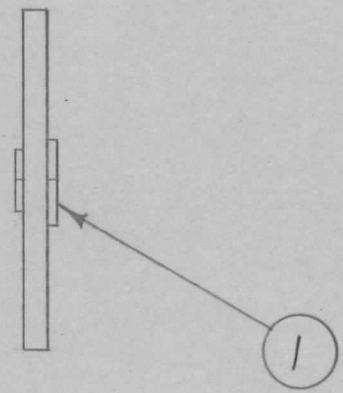
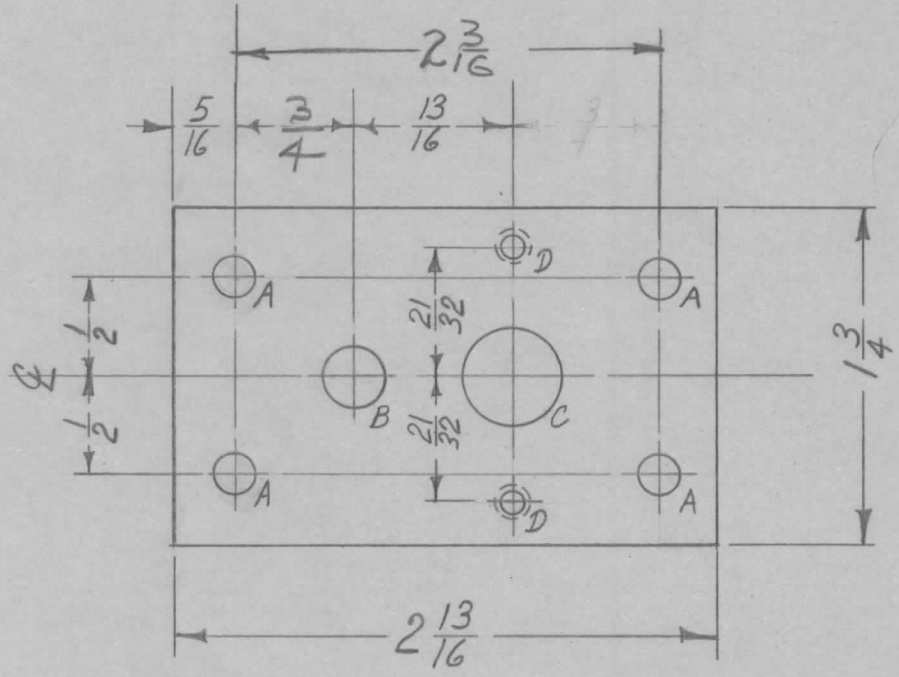
A ~  $\frac{5}{32}$  DIA.                      2 REQ.  
 B ~  $.312 \pm .001$  DIA.            1 "



ISSUE	ITEM	CHANGED FROM	DATE	CH. NO.	DRAFTS	CHECKER	ENG. APP.	REQ.	ITEM	PART NO.	DESCRIPTION	SYMBOL							
								1	1	BB-117-6	NYLON PANEL, BEARING								
										$\frac{1}{8}$	THE TECHNICAL MATERIEL CORP.								
										ALUMINUM	MAMARONECK, NEW YORK								
											FLOAT, FRONT								
A	1	TOLERANCE ADDED TO "B" DIA. HOLE	9 23 60	3071	CUS	<i>[Signature]</i>	<i>[Signature]</i>			5052-H32	<i>[Signature]</i>								
TOLERANCES			SCALE: FULL																
DEC. DIM. $\pm$			MAXIMUM ALLOWABLE TOLERANCES HAVE BEEN DETERMINED AND ANY DEVIATIONS WILL BE CAUSE FOR REJECTION. REMOVE ALL BURRS AND SHARP EDGES					TYPE & TEMPER		HEAT TREAT. SPEC.		DRAWN		CHECKED		FINAL APPROVAL			
FRAC. DIM. $\pm$ 1/64								5052-H32											
ANGULAR DIM. $\pm$								S404 YELL. IRIDITE										MS-2355	
								FINISH & SPEC. NO.		ELEC. DES. APP		MECH. DES. APP		A					

REQ. PER. UNIT	USED ON			MS-2356	A
	MODEL	ASS'Y. NO.	DATE		
1	CMO-1		8-9-60		
1	CMO-2		8-9-60		

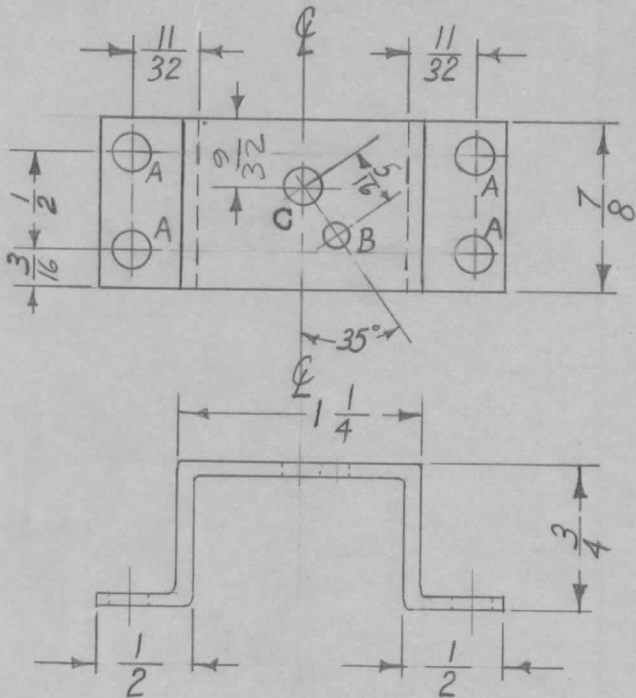
A ~  $\frac{13}{64}$  DIA. 4 REQ.  
 B ~ .312  $\pm$ .001 DIA. 1 "  
 C ~  $\frac{1}{2}$  DIA. 1 "  
 D - DR. & TAP FOR 6-32 2 "



REQ.	ITEM	PART NO.	DESCRIPTION			SYMBOL	
1	1	BB-117-6	NYLON PANEL BEARINGS				
STOCK SIZE			THE TECHNICAL MATERIEL CORP.				
MATERIAL			MAMARONECK, NEW YORK				
ALUMINUM			PLATE, CALIBRATE CONTROL				
ISSUE ITEM		CHANGED FROM	DATE	CH. NO.	DRAFTS	CHECKER	ENG. APP.
A 1		TOLERANCE ADDED TO "B" HOLE	9 23 60	3071	cus	[Signature]	[Signature]
TOLERANCES			SCALE: FULL				
DEC. DIM. $\pm$			MAXIMUM ALLOWABLE TOLERANCES HAVE BEEN DETERMINED AND ANY DEVIATIONS WILL BE CAUSE FOR REJECTION. REMOVE ALL BURRS AND SHARP EDGES				
FRAC. DIM. $\pm$ 1/64							
ANGULAR DIM. $\pm$							
TYPE & TEMPER		HEATTREAT. SPEC.	DRAWN	CHECKED	FINAL APPROVAL		
5052-H32			[Signature]	[Signature]	[Signature]		
FINISH & SPEC. NO.		ELEC. DES. APP	MECH. DES. APP				
S404 YELL. IRIDITE			[Signature]	[Signature]	MS-2356 A		



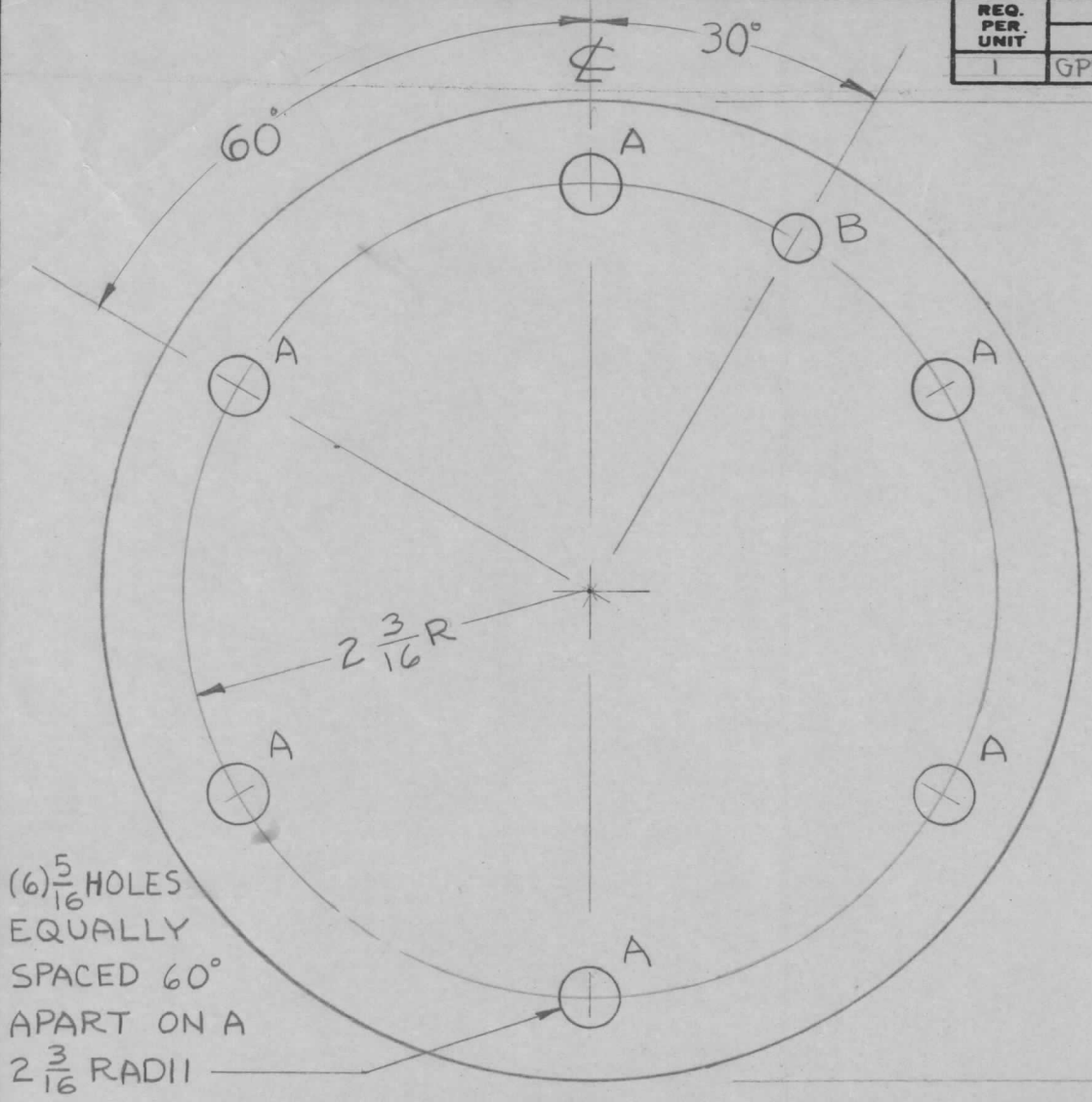
REQ. PER. UNIT	USED ON			MS-2357	B
	MODEL	ASS'Y. NO.	DATE		
1	CMO-1		8-9-60		
1	CMO-2		8-9-60		



A ~  $\frac{13}{64}$  DIA. ——— 4 REQ.  
 B ~ .118 DIA. ——— 1 REQ.  
 C ~  $\frac{3}{16}$  ——— 1 REQ.

REQ.	ITEM	PART NO.	DESCRIPTION			SYMBOL		
		.081	THE TECHNICAL MATERIEL CORP.					
		STOCK SIZE	MAMARONECK, NEW YORK					
B	2 "A" Holes were 5/32 DIA	1-30-61	4021	RU	JCB	BRACKET, DIAL LOCK SUPPORT		
	1 "C" Hole was "A" Hole 5/32 D.							
A	2 9/32 Dia. was 11/32	9-60	3075	CY	JCB			
	1 "A" HOLE WAS 3/16	23						
ISSUE	ITEM	CHANGED FROM	DATE	CH. NO.	DRAFTS	CHECKER	ENG. APP.	
TOLERANCES			SCALE: FULL					
DEC. DIM. ±			MAXIMUM ALLOWABLE TOLERANCES HAVE BEEN DETERMINED AND ANY DEVIATIONS WILL BE CAUSE FOR REJECTION. REMOVE ALL BURRS AND SHARP EDGES					
FRAC. DIM. ± 1/64								
ANGULAR DIM. ±								
5052-H32		TYPE & TEMPER		HEATTREAT. SPEC.		DRAWN	CHECKED	FINAL APPROVAL
S404 YELL IRIDITE						J.D.	JCB	MS-2357
FINISH & SPEC. NO.		ELEC. DES. APP		MECH. DES. APP		B		

REQ. PER. UNIT	USED ON			MS-2360	A
	MODEL	ASS'Y. NO.	DATE		
1	GPT 40K	DC-100	8-9-60		



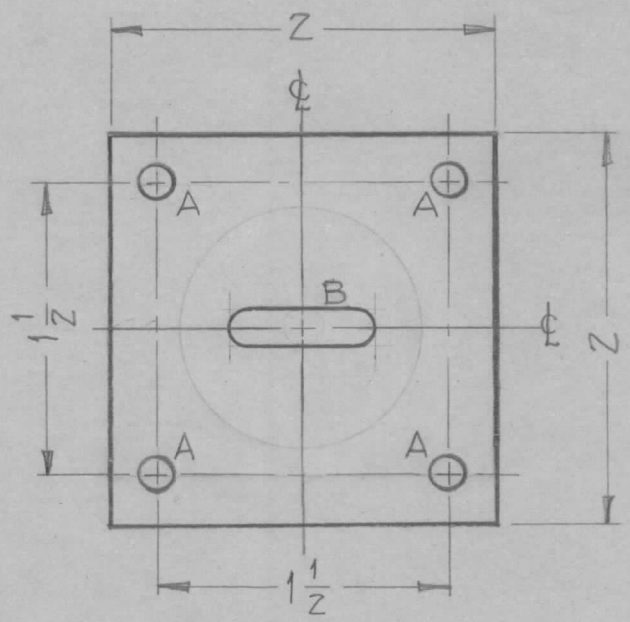
A  $\sqrt{\frac{13}{32}}$  DIA. 6 REQ.  
 B  $\sqrt{\frac{1}{4}}$  DIA. 1 REQ.

(6)  $\frac{5}{16}$  HOLES  
 EQUALLY  
 SPACED  $60^\circ$   
 APART ON A  
 $2 \frac{3}{16}$  RADII

								REQ.	ITEM	PART NO.	DESCRIPTION	SYMBOL	
										1/8 THK	THE TECHNICAL MATERIEL CORP.		
										STOCK SIZE	MAMARONECK, NEW YORK		
										ALUMINUM	PLATE DC-100		
										MATERIAL			
										5052-H32	cus	file	Q.B.
										TYPE & TEMPER	DRAWN	CHECKED	FINAL APPROVAL
										S-404 YELL. IRIDITE			MS-2360
										FINISH & SPEC. NO.	ELEC. DES. APP	MECH. DES. APP	A
ISSUE	ITEM	CHANGED FROM	DATE	CH. NO.	DRAFTS	CHECKER	ENG. APP.						
TOLERANCES			SCALE: FULL										
DEC. DIM. $\pm$			MAXIMUM ALLOWABLE TOLERANCES HAVE BEEN DETERMINED AND ANY DEVIATIONS WILL BE CAUSE FOR REJECTION. REMOVE ALL BURRS AND SHARP EDGES										
FRAC. DIM. $\pm$ 1/64													
ANGULAR DIM. $\pm$													

REQ. PER. UNIT	USED ON			MS-2363	A
	MODEL	ASS'Y. NO.	DATE		
1	GPT-40KP		8-5-60		

HOLES REQ'D  
 A ~ 3/16 DIA. 4  
 B ~ 3/16 x 3/4 SLOT 1

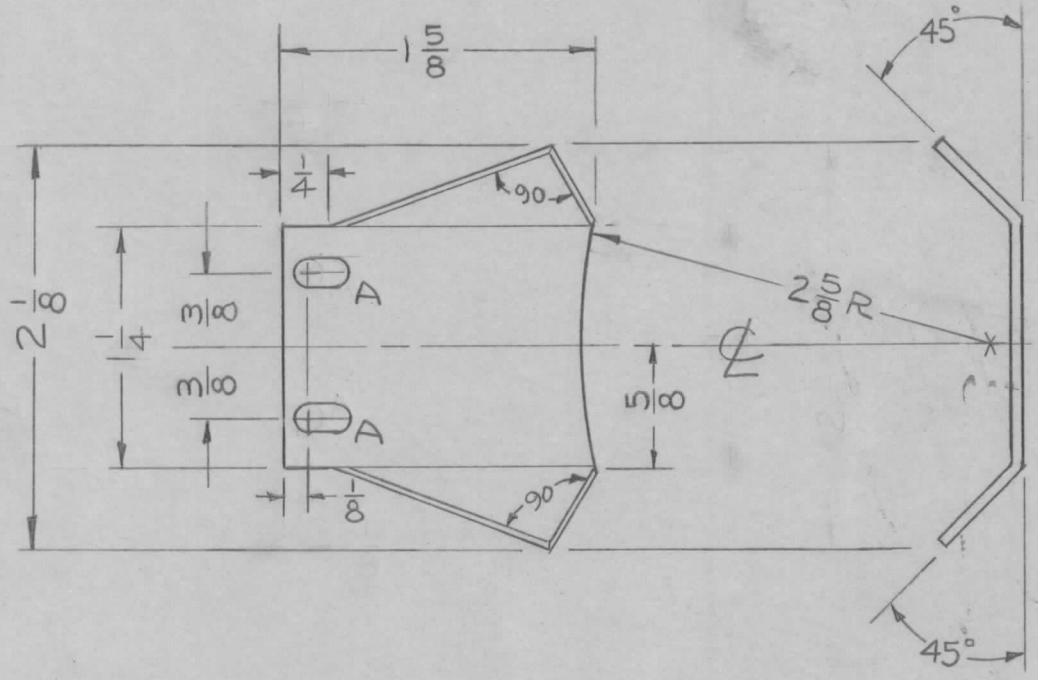


REQ. UNIT		PART NO.		DESCRIPTION		SYMBOL				
		.081		THE TECHNICAL MATERIEL CORP.						
		STOCK SIZE		MAMARONECK, NEW YORK						
A 2		ALUMINUM		PLATE, FORM MTG.						
1		MATERIAL								
SLOT ADDED, WAS "A" HOLE		5052-H32		DRAWN		CHECKED				
'A' HOLE REQ WAS 5		5-8-63 8945		S-404 YELLOW IRIDITE		FINAL APPROVAL				
ISSUE	ITEM	CHANGED FROM	DATE	CH. NO.	DRAFTS	CHECKER	ENG. APP.			
TOLERANCES			SCALE: 4		5052-H32		ARB			
DEC. DIM. ±			MAXIMUM ALLOWABLE TOLERANCES HAVE BEEN DETERMINED AND ANY DEVIATIONS WILL BE CAUSE FOR REJECTION. REMOVE ALL BURRS AND SHARP EDGES		TYPE & TEMPER		HEAT TREAT. SPEC.			
FRAC. DIM. ± 1/64					FINISH & SPEC. NO.		ELEC. DES. APP.		MECH. DES. APP.	
ANGULAR DIM. ±									MS-2363 A	



REQ. PER. UNIT	USED ON			MS-2364	A
	MODEL	ASS'Y. NO.	DATE		
6	GPT-40K		8-12-60		

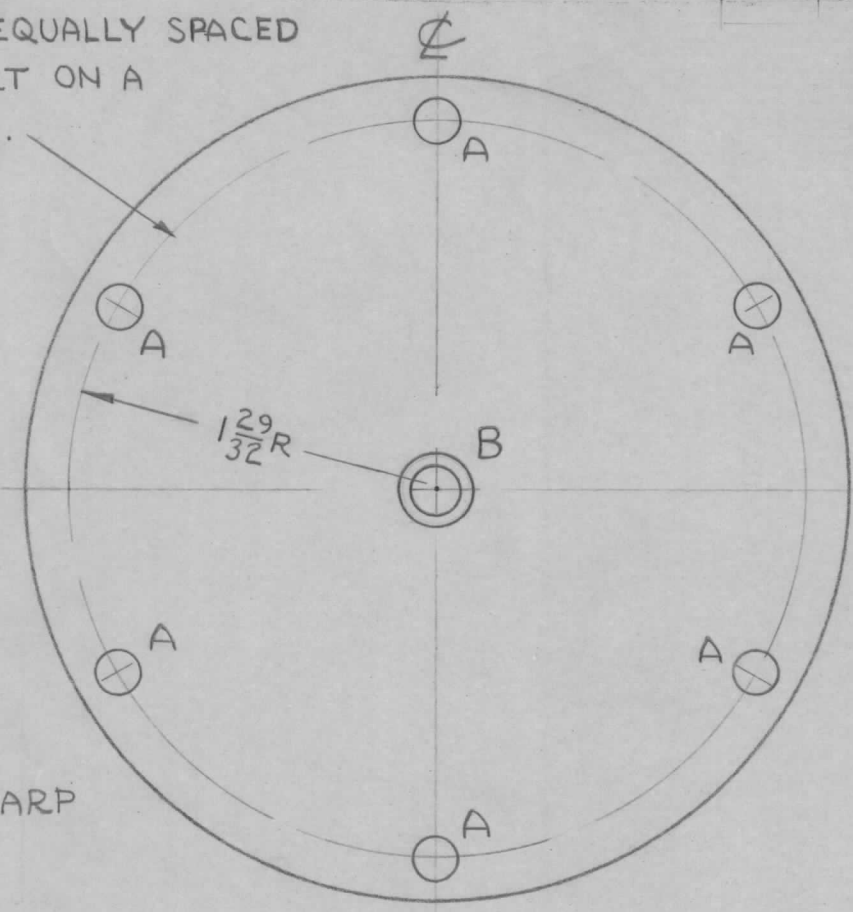
A ~  $\frac{9}{64} \times \frac{9}{32}$  SLOTS 2 REQ.



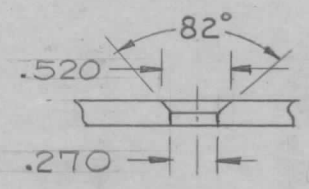
								REQ.	ITEM	PART NO.	DESCRIPTION			SYMBOL					
										.064	THE TECHNICAL MATERIEL CORP.								
										STOCK SIZE	MAMARONECK, NEW YORK								
										ALUMINUM	BAFFLE, AIR DISTRIBUTER								
										MATERIAL	FINAL TUBE ML 6697								
A	1	"A" SLOTS WERE $\frac{9}{64}$ D. HOLES	9-21-60	3017	CS	file	phle	5052-H32			CS	file	phle						
ISSUE	ITEM	CHANGED FROM	DATE	CH. NO.	DRAFTS	CHECKER	ENG. APP.												
TOLERANCES			SCALE: <i>H</i>																
DEC. DIM. $\pm$			MAXIMUM ALLOWABLE TOLERANCES HAVE BEEN DETERMINED AND ANY DEVIATIONS WILL BE CAUSE FOR REJECTION. REMOVE ALL BURRS AND SHARP EDGES					TYPE & TEMPER		HEAT TREAT. SPEC.	DRAWN		CHECKED	FINAL APPROVAL					
FRAC. DIM. $\pm$ 1/64								5404		YELL. IRIDITE									
ANGULAR DIM. $\pm$												FINISH & SPEC. NO.		ELEC. DES. APP		MECH. DES. APP		MS-2364 A	

REQ. PER. UNIT	USED ON			MS-2368	B
	MODEL	ASS'Y. NO.	DATE		
1	GPT-10K(2MC)	A-1947	8-18-60		

6 HOLES EQUALLY SPACED  
60° APART ON A  
 $1\frac{29}{32}$  RADII.



A  $\sim$  7/32 DIA. 6 REQ.  
B  $\sim$  DR.  $\frac{1}{4}$  C'SK FOR  
 $\frac{1}{4}$ -20 FHS 1 REQ.  
(SEE DETAIL)



"B" DETAIL  
1 REQ.

REMOVE SHARP  
EDGES

REQ.	ITEM	PART NO.	DESCRIPTION				SYMBOL
		1/8 THK	THE TECHNICAL MATERIEL CORP.				
		STOCK SIZE	MAMARONECK, NEW YORK				
		ALUMINUM	PLATE, VARIABLE				
		MATERIAL	CAPACITOR FLANGE				
B	1	FINISH & SPEC. WAS GOLD PLATE .000025	12-7-62	7831	<i>[Signature]</i>	<i>[Signature]</i>	
A	2	.520 DIA. WAS .337 DIA.	1-22-62	6229	<i>[Signature]</i>	<i>[Signature]</i>	
A	1	.270 DIA. WAS 1/4 DIA.					
ISSUE	ITEM	CHANGED FROM	DATE	CH. NO.	DRAFTS	CHECKER	ENG. APP.
TOLERANCES			SCALE: FULL				
DEC. DIM. $\pm$			MAXIMUM ALLOWABLE TOLERANCES HAVE BEEN DETERMINED AND ANY DEVIATIONS WILL BE CAUSE FOR REJECTION. REMOVE ALL BURRS AND SHARP EDGES				
FRAC. DIM. $\pm$ 1/64							
ANGULAR DIM. $\pm$ .5°							
		5052 H32	TYPE & TEMPER		HEAT TREAT. SPEC.		
		S-245 SILVER PLATE	DRAWN		CHECKED		
		S-423 CLEAR IRIDITE	ELEC. DES. APP		MECH. DES. APP		
		FINISH & SPEC. NO.	MS-2368		B		



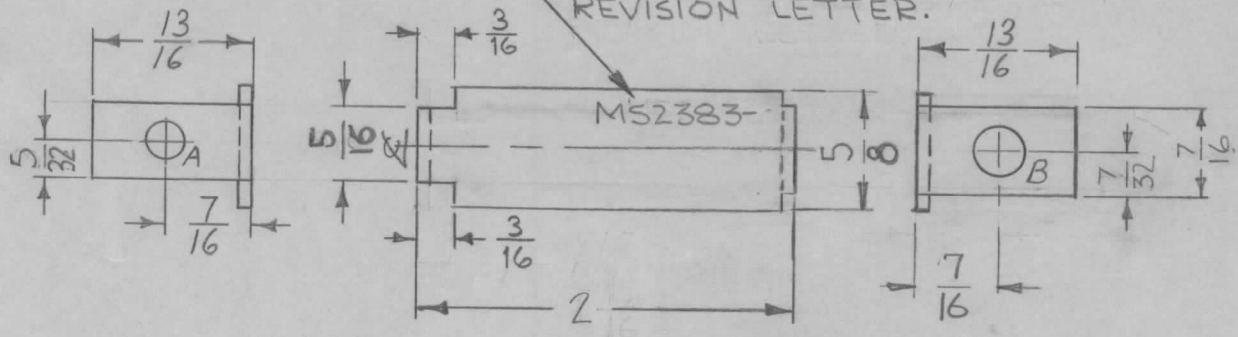




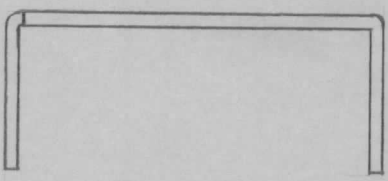


REQ. PER. UNIT	USED ON			MS 2383	E
	MODEL	ASS'Y. NO.	DATE		
1	CHG-1	A-1965	9-16-60		

MARK TMC PART NO.  
1/8 HIGH GOTHIC W/LATEST  
REVISION LETTER.



HOLE LEGEND		
HOLE	DESCRIPTION	REQ.
A	3/16 DIA.	1
B	5/16 DIA.	1



NOTICE TO PERSONS RECEIVING THIS DRAWING

THE TECHNICAL MATERIEL CORPORATION claims proprietary right in the material disclosed hereon. This drawing is issued in confidence for engineering information only and may not be reproduced or used to manufacture anything shown hereon without permission from THE TECHNICAL MATERIEL CORPORATION to the user. This drawing is loaned for mutual assistance and is subject to recall at any time.

Property of:  
THE TECHNICAL MATERIEL CORPORATION  
MAMARONECK, NEW YORK

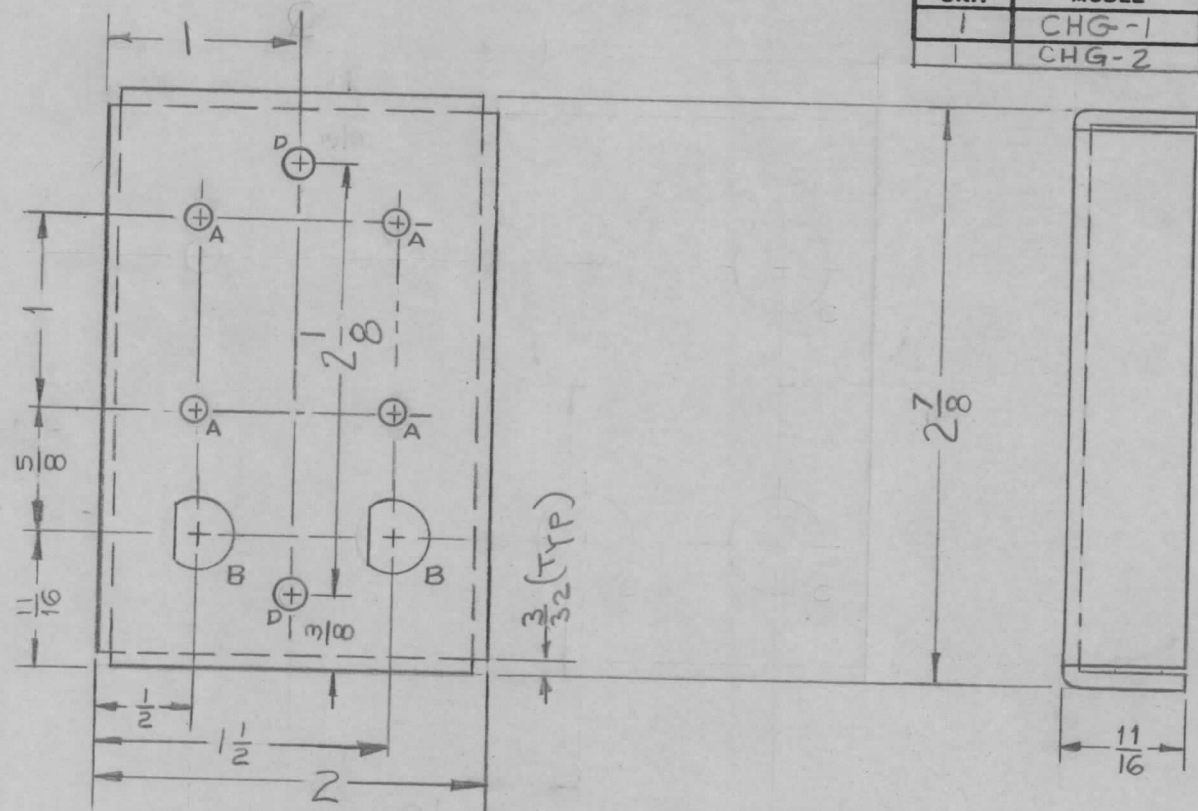
F	2" WAS 2 1/16	10-27-77	21583	PH	W.B.	W.B.
E	ADD TMC PART NO CHGD 1/4 TO 7/32 & 1/2 TO 7/16	1-25-67	17719	RME	JCB	W.B.
D	2 7/16 DIM WAS 1-15/16, 1/4 WAS 7/32, 1/2 WAS 7/16 "B" HOLES WERE 1/4 DIA	4-21-61	4754	DM	JCB	W.B.
C	(2) 3/16" NOTCHES ADDED	4-3-61	4568	WAF	W.B.	JCB
B	RIGHT SIDE VIEW REDESIGNED	12-22-60	3810	W.A.F.	JCB	W.B.
A	COMPLETELY REDESIGNED	11-22-60	3549	DM	JCB	W.B.

REQ.	ITEM	PART NO.	DESCRIPTION	SYMBOL
		.064	THE TECHNICAL MATERIEL CORP. MAMARONECK, NEW YORK BRACKET, RESISTOR MTG.	
		STOCK SIZE		
		ALUMINUM		
		MATERIAL		
		5052-H32		
		TYPE & TEMPER	DRAWN	
		HEATTREAT. SPEC.	CHECKED	
		S404 YELL IRIDITE		
		FINISH & SPEC. NO.	ELEC. DES. APP	
			MECH. DES. APP	
			MS 2383	F

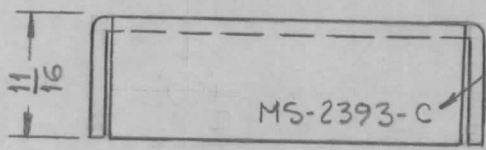
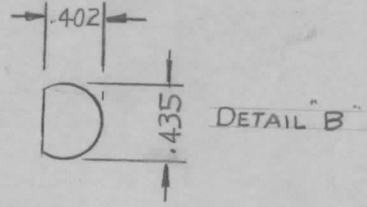
ISSUE	ITEM	CHANGED FROM	DATE	CH. NO.	DRAFTS	CHECKER	ENG. APP.
TOLERANCES		SCALE: FULL					
DEC. DIM. ±		MAXIMUM ALLOWABLE TOLERANCES HAVE BEEN DETERMINED AND ANY DEVIATIONS WILL BE CAUSE FOR REJECTION.					
FRAC. DIM. ± 1/64		REMOVE ALL BURRS AND SHARP EDGES					
ANGULAR DIM. ±							



REQ. PER UNIT	USED ON			MS-2393	C
	MODEL	ASS'Y. NO.	DATE		
	1	CHG-1	MF-RF		
1	CHG-2	MF-RF	2-25-63		



- A ~ 1/8 DIA. 4 Req
- B ~ SEE DETAIL 2 Req
- C ~ 1/8 DIA. 3 Req
- D ~ 1/64 DIA. 2 Req



METAL STAMP TMC PART NO. 1/8 HIGH, GOTHIC.

NOTE:  
Use Material Thickness for Max Radius on All Bends Unless otherwise specified.

REF: LD-845 FOR CHG-1 ONLY.  
LD-936 FOR CHG-2 ONLY.

REQ.	ITEM	PART NO.	DESCRIPTION				SYMBOL
C	1	REF. CLARIFIED	2-25-63	8317	<i>[Signature]</i>	<i>[Signature]</i>	<b>THE TECHNICAL MATERIEL CORP.</b> MAMARONECK, NEW YORK <b>CHASSIS, RF CONNECTOR</b>
B	1	3/8" Dim. Deleted, 2-1/8" Dim Added Between "D" Holes	11-28-60	3585	<i>[Signature]</i>	<i>[Signature]</i>	
A	1	COMPLETELY REVISED	10/11/60	3154	<i>[Signature]</i>	<i>[Signature]</i>	
ISSUE	ITEM	CHANGED FROM	DATE	CH. NO.	DRAFTS	CHECKER	ENG. APP.
TOLERANCES			SCALE:				
DEC. DIM. ±			MAXIMUM ALLOWABLE TOLERANCES HAVE BEEN DETERMINED AND ANY DEVIATIONS WILL BE CAUSE FOR REJECTION. REMOVE ALL BURRS AND SHARP EDGES				
FRAC. DIM. ± 1/64							
ANGULAR DIM. ±							
FINISH & SPEC. NO.		5052-H32		TYPE & TEMPER		HEAT TREAT. SPEC.	
				5404 YELLOW Iridite			
ELEC. DES. APP		MECH. DES. APP		DRAWN		CHECKED	
				<i>[Signature]</i>		<i>[Signature]</i>	
						FINAL APPROVAL	
						MS-2393 C	