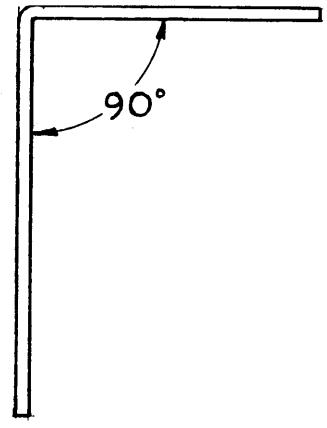
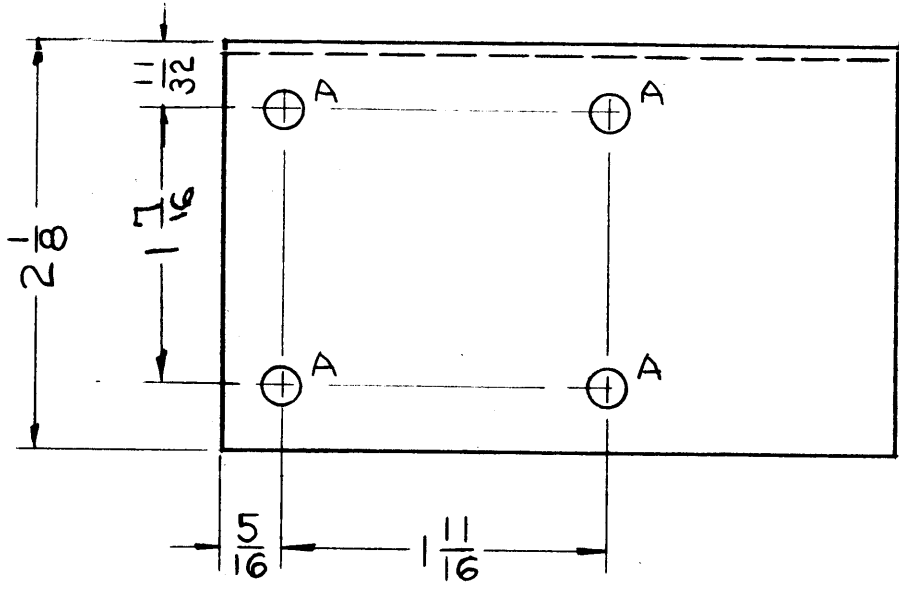
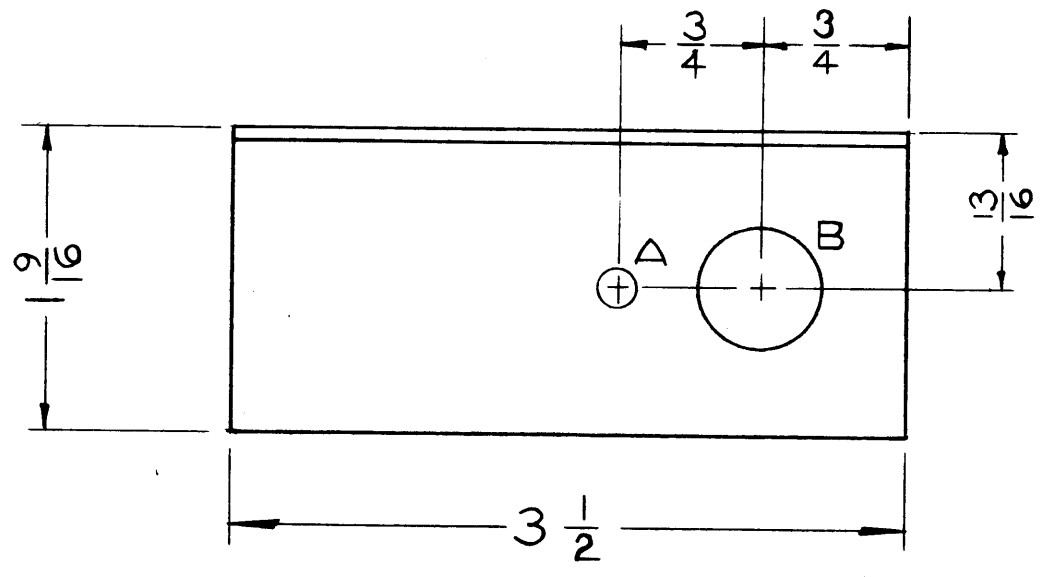


MS-2398 A



A ~ 3/16 DIA. HOLES 5 REQ.
 B ~ 5/8 DIA HOLES 1 REQ.



NOTICE TO PERSONS RECEIVING THIS DRAWING
 THE TECHNICAL MATERIEL CORPORATION claims proprietary right in the material disclosed hereon. This drawing is issued in confidence for engineering information only and may not be reproduced or used to manufacture anything shown hereon without permission from THE TECHNICAL MATERIEL CORPORATION to the user. This drawing is loaned for mutual assistance and is subject to recall at any time.
 Property of:
 THE TECHNICAL MATERIEL CORPORATION
 MAMARONECK, NEW YORK

ISSUE	ITEM	CHANGED FROM	DATE	CH. NO.	DRAFTS	CHECKER	ENG. APP.
A	1	FINISH WAS S-174 BLUE-GREY PAINT	7-5-63	9402	Ⓟ	<i>Hde</i>	<i>DB</i>

TOLERANCES
 DEC. DIM. ±
 FRAC. DIM. ± 1/64
 ANGULAR DIM. ±

SCALE: FULL
 MAXIMUM ALLOWABLE TOLERANCES HAVE BEEN DETERMINED AND ANY DEVIATIONS WILL BE CAUSE FOR REJECTION.
 REMOVE ALL BURRS AND SHARP EDGES

1	GPT-40K			9-7-60
REQ. PER UNIT	MODEL	PROJECT NO.	ASS'Y. NO.	DATE

REQ. ITEM	PART NO.	DESCRIPTION	SYMBOL
	.064	THE TECHNICAL MATERIEL CORP.	
	STOCK SIZE	MAMARONECK, NEW YORK	
	ALUMINUM	BRACKET, AIR SWITCH	
	MATERIAL		
	5052-H32	<i>cy</i>	<i>DB</i>
	TYPE & TEMPER	DRAWN	CHECKED
	HEAT TREAT. SPEC.	<i>Hde</i>	<i>DB</i>
	S197- BLACK SEMI-GLOSS BAKING ENAMEL		
	FINISH & SPEC. NO.	ELEC. DES. APP.	MECH. DES. APP.
			MS-2398 A