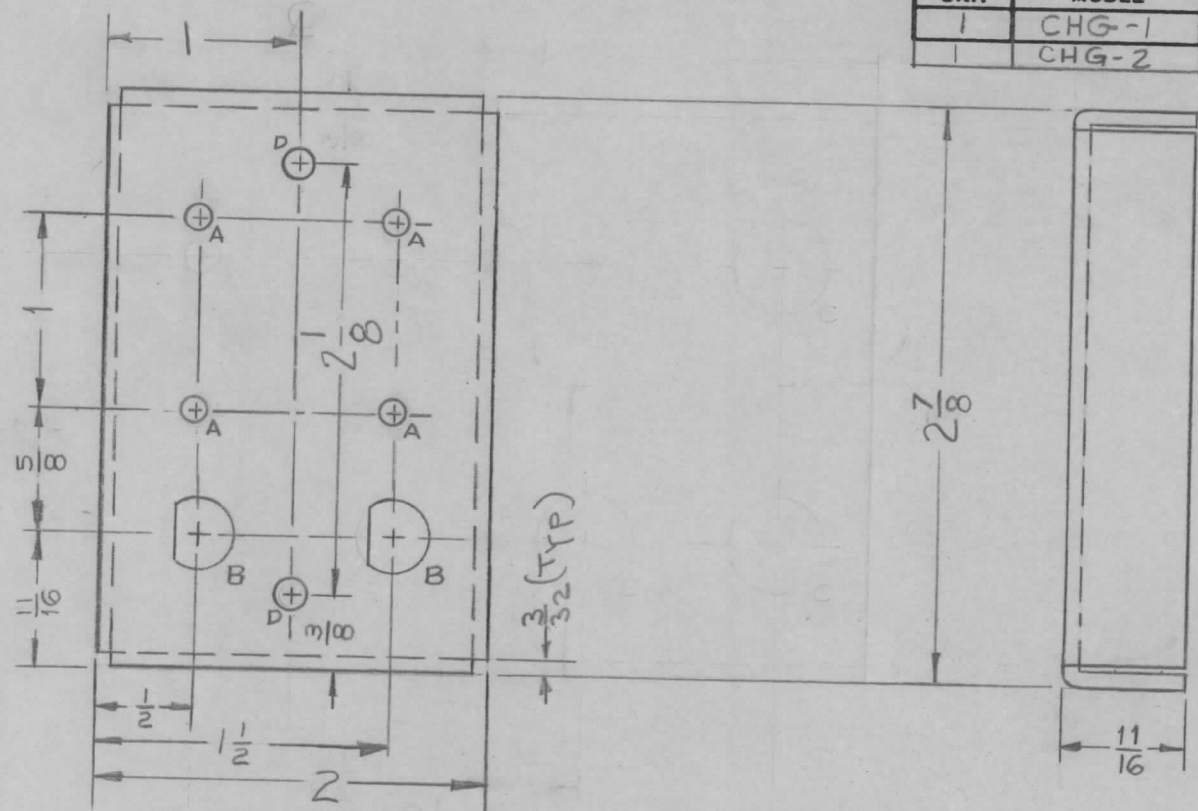
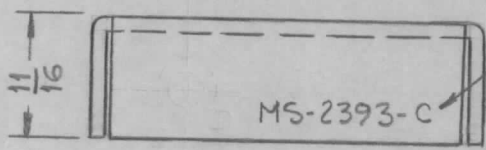
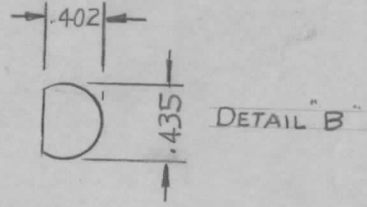


REQ. PER UNIT	USED ON			MS-2393	C
	MODEL	ASS'Y. NO.	DATE		
	1	CHG-1	MF-RF		
1	CHG-2	MF-RF	2-25-63		



- A ~ 1/8 DIA. 4 Req
- B ~ SEE DETAIL 2 Req
- C ~ DIA. 3 Req
- D ~ 1/64 DIA. 2 Req



METAL STAMP TMC PART NO. 1/8 HIGH, GOTHIC.

NOTE:  
Use Material Thickness for Max Radius on All Bends Unless otherwise specified.

REF: LD-845 FOR CHG-1 ONLY.  
LD-936 FOR CHG-2 ONLY.

REQ.	ITEM	PART NO.	DESCRIPTION			SYMBOL	
C	1	REF. CLARIFIED	2-25-63	8317			
B	1	3/8" Dim. Deleted, 2-1/8" Dim Added Between "D" Holes	11-28-60	3585			
A	1	COMPLETELY REVISED	10/11/60	3154			
ISSUE	ITEM	CHANGED FROM	DATE	CH. NO.	DRAFTS	CHECKER	ENG. APP.
TOLERANCES			SCALE:				
DEC. DIM. ±			MAXIMUM ALLOWABLE TOLERANCES HAVE BEEN DETERMINED AND ANY DEVIATIONS WILL BE CAUSE FOR REJECTION. REMOVE ALL BURRS AND SHARP EDGES				
FRAC. DIM. ± 1/64							
ANGULAR DIM. ±							
.064		STOCK SIZE		THE TECHNICAL MATERIEL CORP.			
ALUMINUM		MATERIAL		MAMARONECK, NEW YORK			
5052-H32		TYPE & TEMPER		CHASSIS, RF CONNECTOR			
S404 YELLOW Iridite		HEAT TREAT. SPEC.					
FINISH & SPEC. NO.		ELEC. DES. APP		MECH. DES. APP			
		DRAWN		FINAL APPROVAL			
		CHECKED		MS-2393 C			