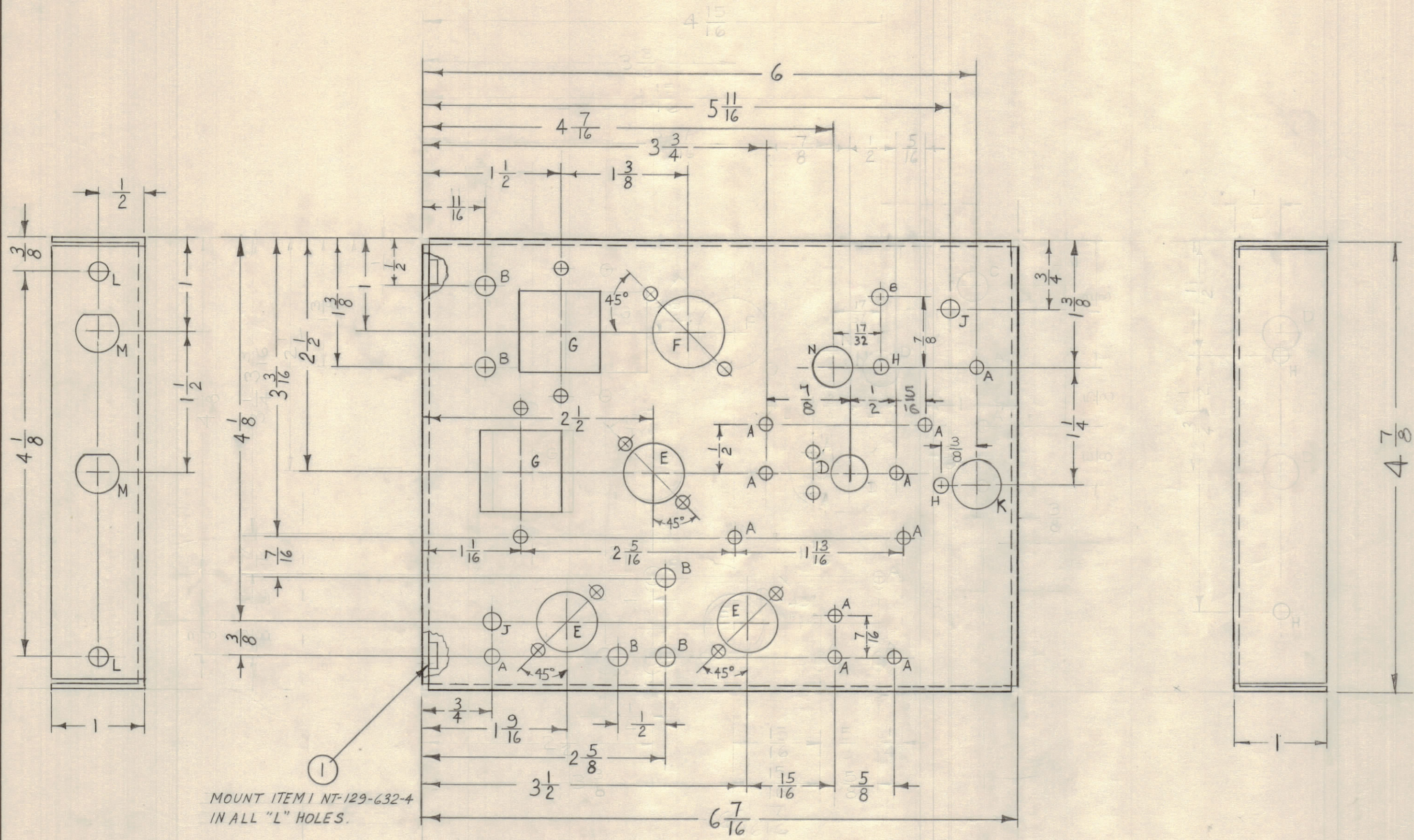
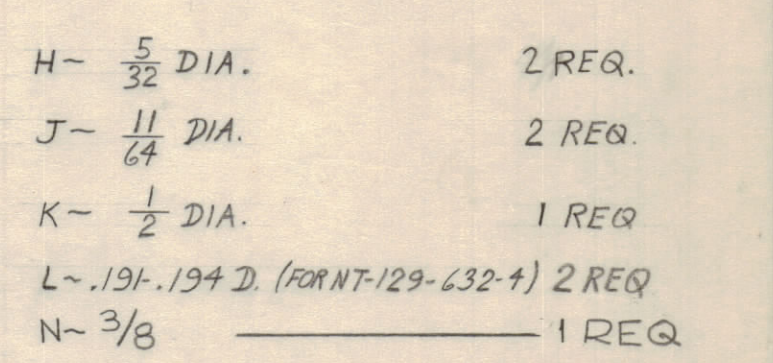
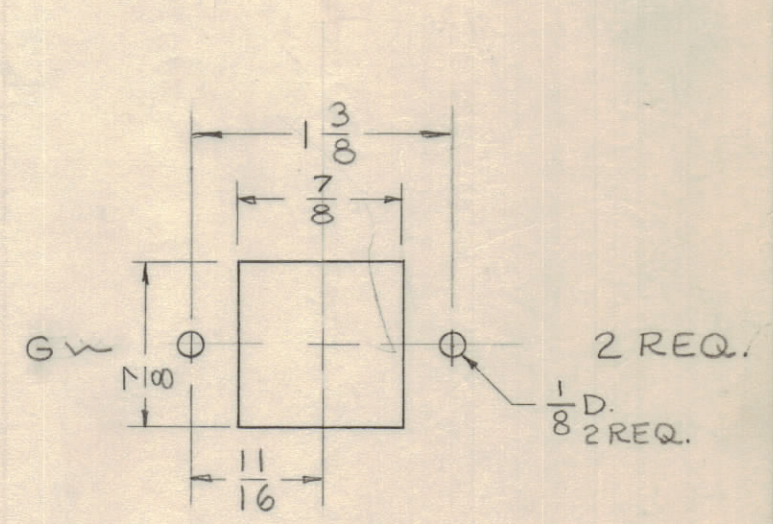
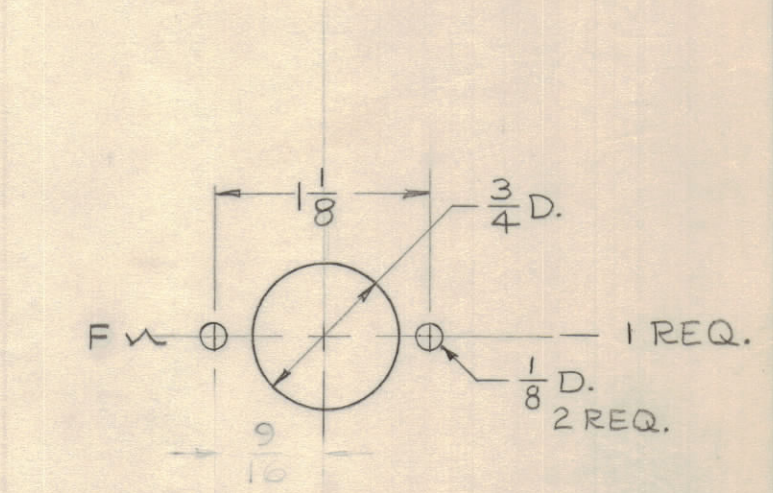
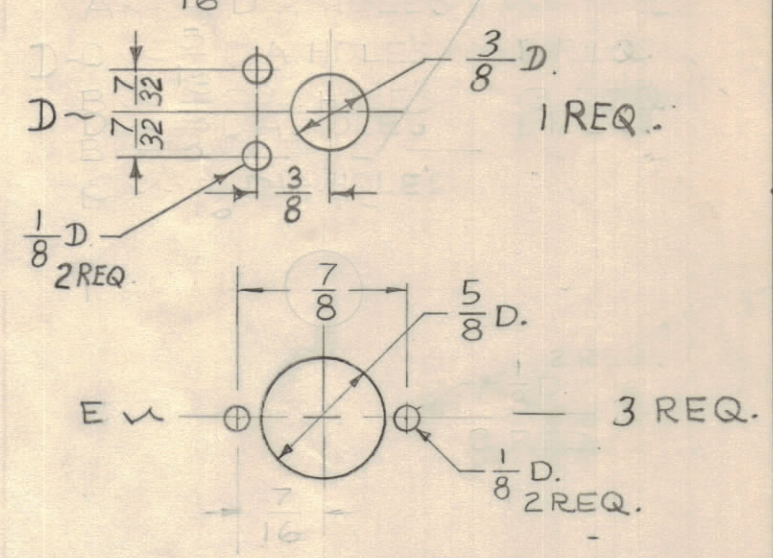


- A - $\frac{1}{8}$ " DIA. HOLES 10 REQ.
- B - $\frac{3}{16}$ " DIA. HOLES 6 REQ.
- D - $\frac{3}{8}$ " DIA. HOLES 1 REQ.
- E - $\frac{5}{8}$ " DIA. HOLES 3 REQ.
- F - $\frac{3}{4}$ " DIA. HOLES 1 REQ.
- G - $\frac{1}{8}$ " DIA. HOLES 2 REQ.
- H - $\frac{5}{32}$ " DIA. 2 REQ.
- J - $\frac{11}{64}$ " DIA. 2 REQ.
- K - $\frac{1}{2}$ " DIA. 1 REQ.
- L - .191-.194 D. (FOR NT-129-632-4) 2 REQ.
- N - $\frac{3}{8}$ " 1 REQ.



MOUNT ITEM NT-129-632-4 IN ALL "L" HOLES.

UNLESS OTHERWISE SPECIFIED DIMENSIONS ARE IN INCHES AND INCLUDE CHEMICALLY APPLIED OR PLATED FINISHES

DECIMALS	FRACTIONS
.X ± .05	± 1/64
.XX ± .01	ANGLES ± 0° 30'
.XXX ± .005	

TOLERANCES

CUT HERE GUARANTEED

C	F4 10 B Hole Added	11-23-60	3540	REL		
B	2 LIPS CLARIFIED, N HOLE WAS A M HOLE	11-3-60	3371			
A	1 1" A HOLE, 2 H HOLES ADDED	10-13-60	3179			
COMPLETELY REDESIGNED						
ISSUE ZONE	DESCRIPTION	DATE	CH. NO.	DRAFTS	CHECKER	ENG. APP.
TOLERANCES		SCALE: FULL				
DEC. DIM. ±		MAXIMUM ALLOWABLE TOLERANCES HAVE BEEN DETERMINED AND ANY DEVIATIONS WILL BE CAUSE FOR REJECTION.				
FRAC. DIM. ± 1/64		REMOVE ALL BURRS AND SHARP EDGES				
ANGULAR DIM. ±						

1	CHG-1	OSC. SECT.		9-15-60
REQ PER UNIT	MODEL	SECTION	ASSY. NO.	DATE

REF: LD-846 (4)

2	1	NT-129-632-4	NUT, ROUND, SWAGE TYPE
REQ. ITEM	PART NO.	DESCRIPTION	
	.064	THE TECHNICAL MATERIEL CORP.	
	ALUMINUM	MAMARONECK, NEW YORK	
	5052-H32	CHASSIS, OVEN	
		OSCILLATOR	
		CW	
		DRAWN	ELEC. DES. APP.
		CHECKED	MECH. DES. APP.
		HEAT TREAT. SPEC.	
		FINISH & SPEC. NO.	
		S-404 YELLOW IRIDITE	
		FINAL APPROVAL	
		MS-2385 C	