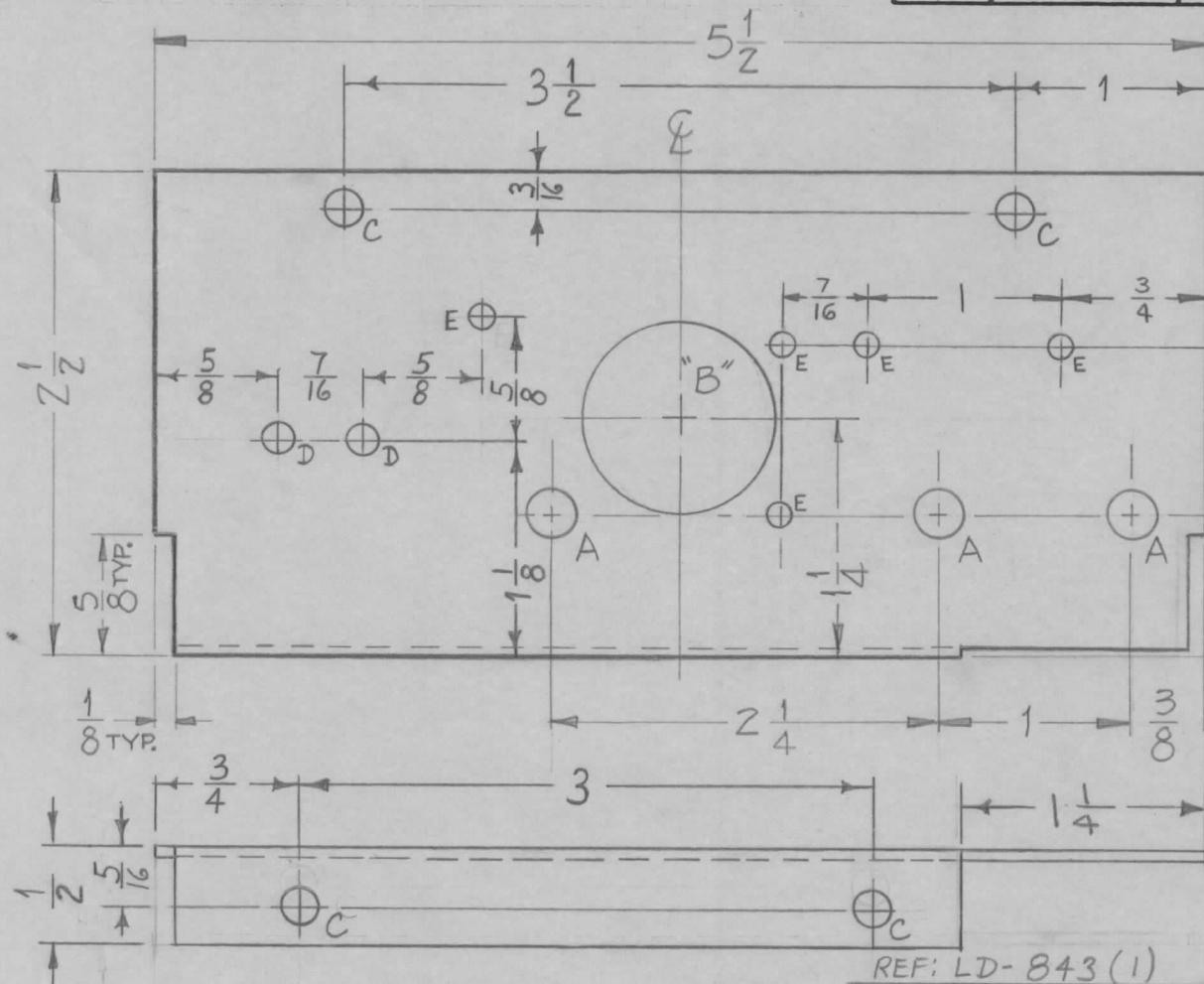


REQ. PER. UNIT	USED ON			MS-2377	B
	MODEL	ASS'Y. NO.	DATE		
1	CHG-1		8-31-60		



NOTE:
USE MATERIAL THICKNESS FOR MAX. RADIUS
ON ALL BENDS UNLESS OTHERWISE SPECIFIED

- ② MOUNT NT-129-440-4
ITEM 2 IN ALL "D" HOLES
AFTER FINISHING.
- ① MOUNT NT-129-632-4
ITEM 1 IN ALL "C" HOLES
AFTER FINISHING.

- A ~ 1/4 DIA. 3 REQ.
- B ~ 1" DIA. 1 "
- C ~ .191-.194 DIA. 4 "
- D ~ .161-.164 DIA. 2 "
- E ~ 1/8 DIA. 5 "

REF: LD-843 (1)

2	2	NT-129-440-4	NUT, SWAGE
4	1	NT-129-632-A	NUT, SWAGE

B	1	4 (E) Holes Added	11-16-60	3456	REL	JHE	WLB
A	4	NOTE ADDED	10-24-60	3264	WLB	JHE	WLB
	3	ONE "E" HOLE ADDED					
	2	TWO "D" HOLES ADDED					
	1	TWO "C" HOLES ADDED					

ISSUE	ITEM	CHANGED FROM	DATE	CH. NO.	DRAFTS	CHECKER	ENG. APP.
TOLERANCES			SCALE: #				
DEC. DIM. ±			MAXIMUM ALLOWABLE TOLERANCES HAVE BEEN DETERMINED AND ANY DEVIATIONS WILL BE CAUSE FOR REJECTION. REMOVE ALL BURRS AND SHARP EDGES				
FRAC. DIM. ± 1/64							
ANGULAR DIM. ±							

REQ.	ITEM	PART NO.	DESCRIPTION	SYMBOL
		.06Z	THE TECHNICAL MATERIEL CORP.	
		ALUMINUM	MAMARONECK, NEW YORK	
		MATERIAL	SHIELD, R.F. SYNTHESIZER	
		5052-H32	D.S. [Signature]	[Signature]
		TYPE & TEMPER	DRAWN	CHECKED
		S404 IRIDITE	[Signature]	[Signature]
		FINISH & SPEC. NO.	ELEC. DES. APP	MECH. DES. APP
				MS-2377 B