

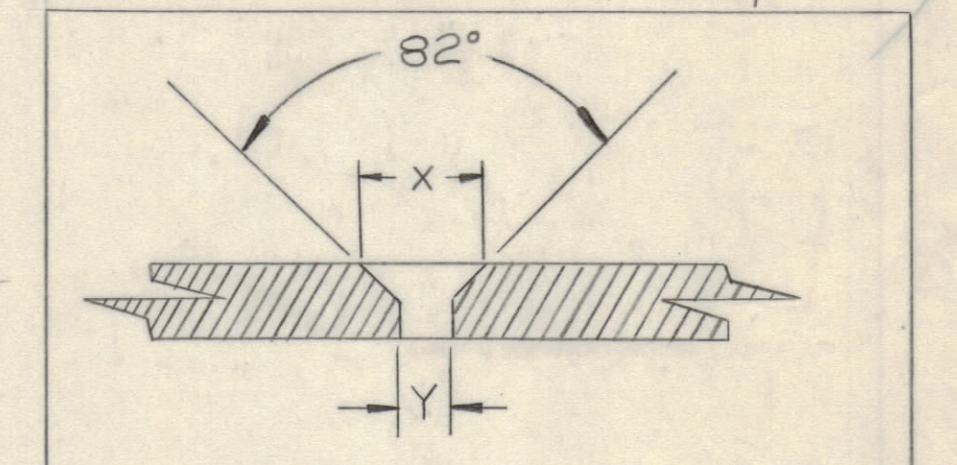
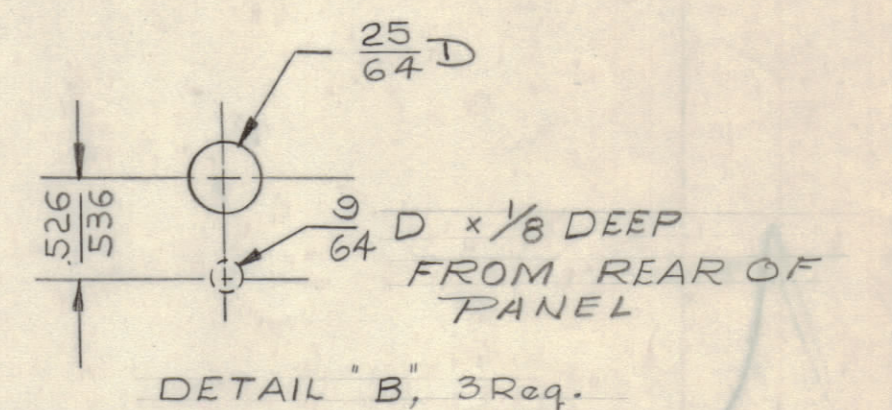
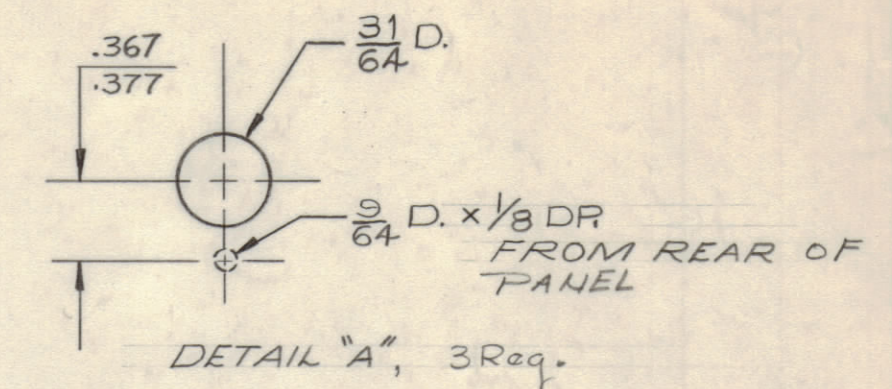
NOTICE TO PERSONS RECEIVING THIS DRAWING

THE TECHNICAL MATERIEL CORPORATION claims Proprietary right in the material disclosed herein. This drawing is issued in confidence for engineering information only and may not be reproduced or used to manufacture anything shown hereon without permission from THE TECHNICAL MATERIEL CORPORATION to the user. This drawing is loaned for mutual assistance and is subject to recall at any time.

Property of:
THE TECHNICAL MATERIEL CORPORATION
MAMARONECK, NEW YORK

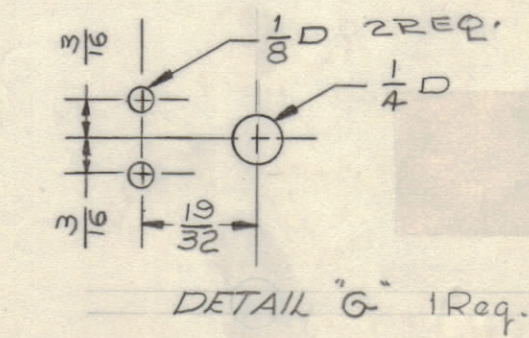
FINISH
S1404 YELLOW IRIDITE
S114 ZINC CHROMATE PRIMER FRONT & EDGES ONLY
S115 TMC SMOOTH GREY ENAMEL
PRIME & PAINT TO CUSTOMER SPEC.

MACHING
1- LATERAL BOW OF PANEL MUST BE KEPT TO .031 TOLERANCE
2- MILL ALL EDGES
3- HOLES MUST BE DRILLED
4- PANEL MUST BE FREE OF ALL MACHINING MARKS GOUGES & SCRATCHES.
IF NECESSARY SAND FRONT OF PANEL WITH NO. 120 GRIT SANDPAPER.

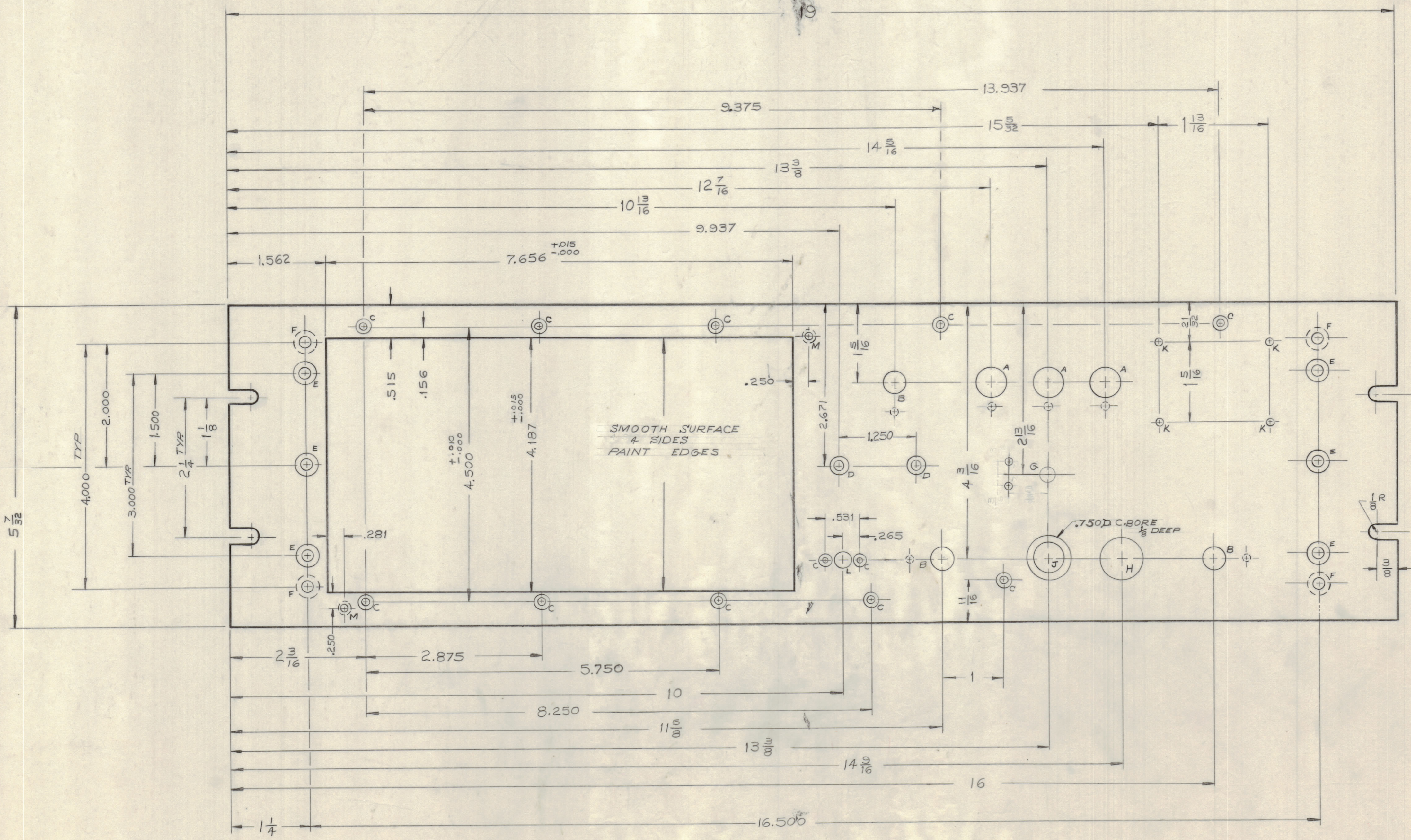


REQ.	10	2	6	4
HOLE DIA	"C"	"D"	"E"	"F"
X	.230	.337	.390	29/64
Y	#31(.120)	#18(.169)	#9(.196)	13/16 C. SINK FROM REAR

DETAIL C, D, E, F (FLAT HEAD SCREWS)



- A - SEE DETAIL
- B - SEE DETAIL
- C - SEE DETAIL
- D - "
- E - "
- F - "
- G - "
- H - 1/8 DIA
- J - 1/2 DIA
- K - .078 DIA.
- L - 9/32 DIA
- M DRILL & TAP 10-32



ISSUE	ZONE	DESCRIPTION	DATE	CH. NO.	DRAFTS	CHECKER	ENG. APP.

TOLERANCES: DEC. DIM. ±, FRAC. DIM. ±, ANGULAR DIM. ±

SCALE: MAXIMUM ALLOWABLE TOLERANCES HAVE BEEN DETERMINED AND ANY DEVIATIONS WILL BE CAUSE FOR REJECTION. REMOVE ALL BURRS AND SHARP EDGES

UNLESS OTHERWISE SPECIFIED DIMENSIONS ARE IN INCHES AND INCLUDE CHEMICALLY APPLIED OR PLATED FINISHES

TOLERANCES: DECIMALS ±.005, FRACTIONS ±.005, ANGLES ±0° 30'

REQ PER UNIT	MODEL	SECTION	ASSY. NO.	DATE
1	FFR-3()			8-29-60

REF DWG LD 77A ENGRAVING

REQ. ITEM	PART NO.	DESCRIPTION	SYMBOL
	3/16 THK. STOCK SIZE	THE TECHNICAL MATERIEL CORP. MAMARONECK, NEW YORK	
	ALUMINUM	PANEL FRONT	
	2024-T3	R.U.	
	TYPE & TEMPER	DRAWN	ELEC. DES. APP.
	HEAT TREAT SPEC.	CHECKED	MECH. DES. APP.
	SEE NOTE		FINAL APPROVAL
	FINISH & SPEC. NO.		MS 2374