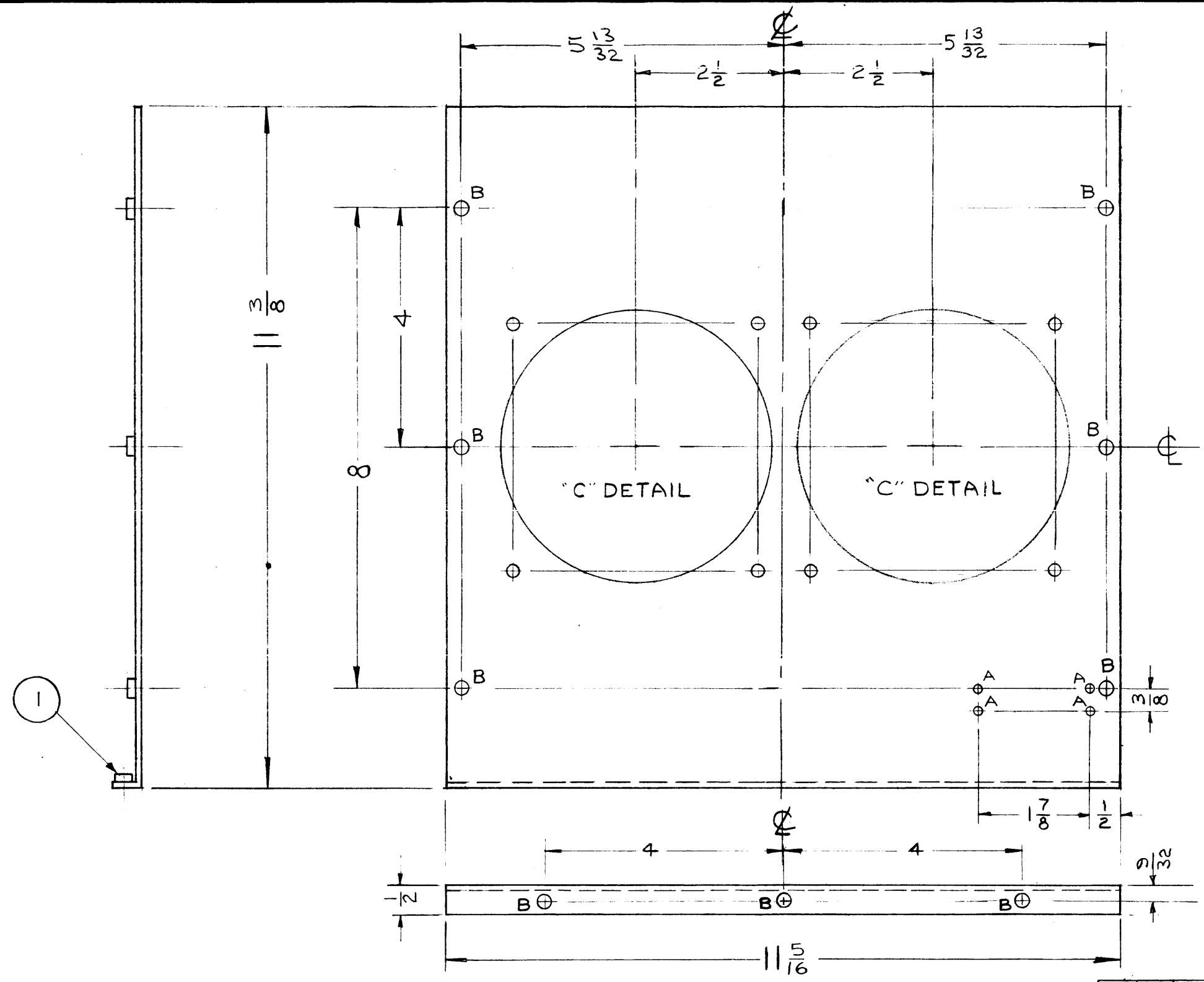
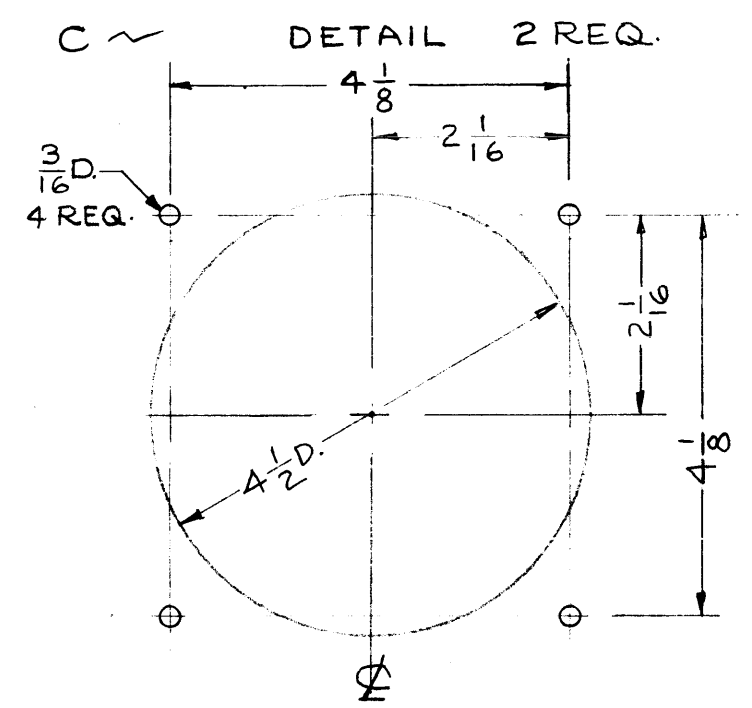


MS-2372



A ~ 1/8 DIA. HOLES 4 REQ.
 B ~ .221 / .224 DIA. HOLES 9 REQ.



NOTICE TO PERSONS RECEIVING THIS DRAWING

THE TECHNICAL MATERIEL CORPORATION claims proprietary right in the material disclosed hereon. This drawing is issued in confidence for engineering information only and may not be reproduced or used to manufacture anything shown hereon without permission from THE TECHNICAL MATERIEL CORPORATION to the user. This drawing is loaned for mutual assistance and is subject to recall at any time.

Property of:
 THE TECHNICAL MATERIEL CORPORATION
 MAMARONECK, NEW YORK

ISSUE	ITEM	CHANGED FROM	DATE	CH. NO.	DRAFTS	CHECKER	ENG. APP.
TOLERANCES							
SCALE: $\frac{1}{4}$							
DEC. DIM. \pm							
FRAC. DIM. $\pm \frac{1}{64}$							
ANGULAR DIM. \pm							
MAXIMUM ALLOWABLE TOLERANCES HAVE BEEN DETERMINED AND ANY DEVIATIONS WILL BE CAUSE FOR REJECTION. REMOVE ALL BURRS AND SHARP EDGES							

1	RAK-11		8-23-60
REQ. PER UNIT	MODEL	PROJECT NO.	ASS'Y. NO.
USED ON			

9	1	NT-129-8-32-6	SWAGE NUT	
REQ. ITEM	PART NO.		DESCRIPTION	SYMBOL
	.081		THE TECHNICAL MATERIEL CORP. MAMARONECK, NEW YORK	
	ALUMINUM		ADAPTER PLATE, BLOWER	
MATERIAL				
5052-H32			cu	fwc
TYPE & TEMPER		HEAT TREAT. SPEC.	DRAWN	CHECKED
S404 YELL. IRIDITE				FINAL APPROVAL
FINISH & SPEC. NO.			ELEC. DES. APP.	MECH. DES. APP.
				MS-2372