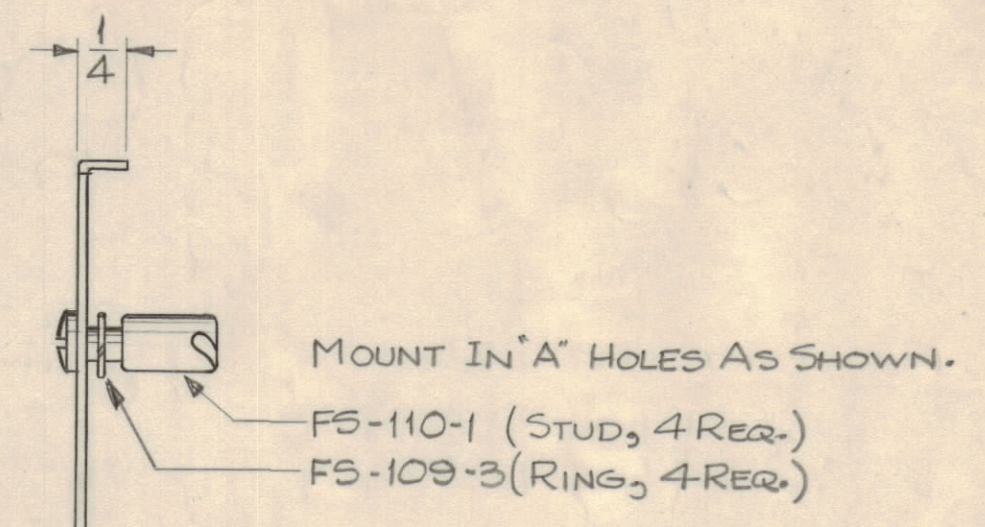
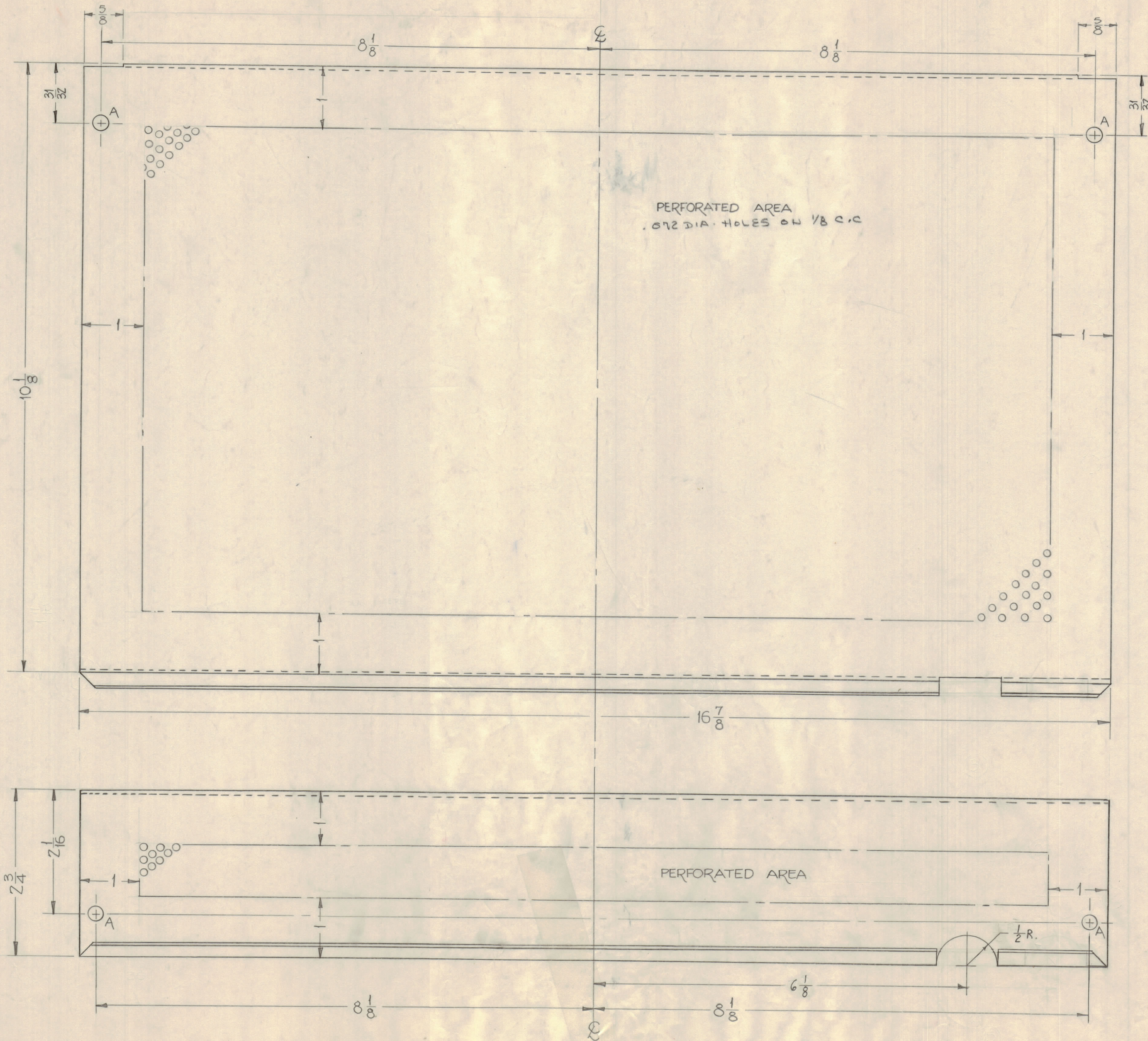


NOTICE TO PERSONS RECEIVING THIS DRAWING

THE TECHNICAL MATERIEL CORPORATION claims proprietary right in the material disclosed hereon. This drawing is issued in confidence for engineering information only and may not be reproduced or used to manufacture anything shown hereon without permission from THE TECHNICAL MATERIEL CORPORATION to the user. This drawing is loaned for mutual assistance and is subject to recall at any time.

Property of:
THE TECHNICAL MATERIEL CORPORATION
MAMARONECK, NEW YORK



HOLES A ~ 1/4 DIA. REQ. 4

DEC. DIM. ±	FRAC. DIM. ±	ANGULAR DIM. ±
± .005	± .005	± .005

ISSUE NO.	DATE	CH. NO.	DESCRIPTION	DRAFTS	CHECKER	ENG. APP.
B A2	4-25-62	8912	BLANK SIZE REF. MS-1784-4, DELETED			
A E9	3-14-61	4412	Dim 10 1/8 was 10 1/16 (error)	RU		

REQ. PER UNIT	MODEL	SECTION	ASSY. NO.	DATE	USED ON
1	CSS-1A	SBG		1-30-62	
1	CSS-1	SBG		8-16-60	

REF. MS-1784-4 (BLANK SIZE)	
REQ. ITEM	PART NO.
	.051 THK.
	STOCK SIZE
	ALUMINUM
	MATERIAL
	5052-H32
	TYPE & TEMPER
	HEAT TREAT. SPEC.
	S-404 IRIDITE
	FINISH & SPEC. NO.
DESCRIPTION	
THE TECHNICAL MATERIEL CORP. MAMARONECK, NEW YORK	
COVER, TOP	
SYMBOL	
	MS-2367

MS-2367 B