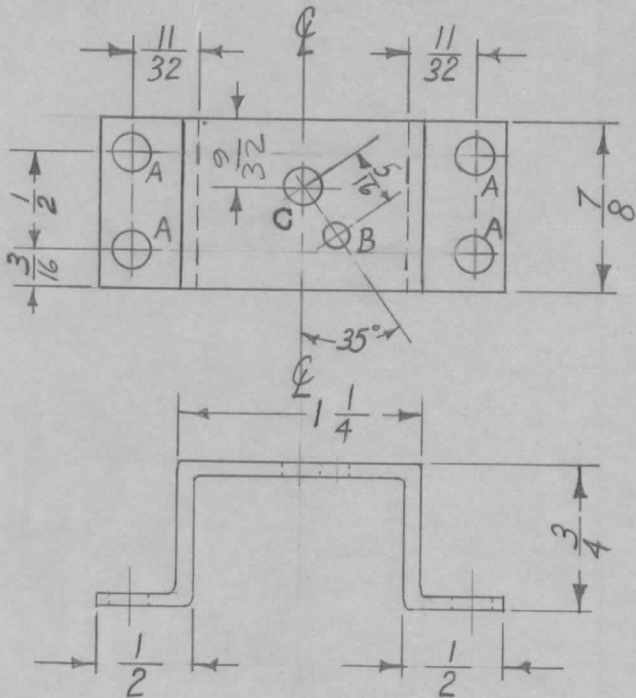


REQ. PER. UNIT	USED ON			MS-2357	B
	MODEL	ASS'Y. NO.	DATE		
1	CMO-1		8-9-60		
1	CMO-2		8-9-60		



A ~ $\frac{13}{64}$ DIA. ——— 4 REQ.
 B ~ .118 DIA. ——— 1 REQ.
 C ~ $\frac{3}{16}$ ——— 1 REQ.

REQ.	ITEM	PART NO.	DESCRIPTION			SYMBOL		
		.081	THE TECHNICAL MATERIEL CORP.					
		STOCK SIZE	MAMARONECK, NEW YORK					
B	2 "A" Holes were 5/32 DIA	1-30-61	4021	RU	JCB	BRACKET, DIAL LOCK SUPPORT		
	1 "C" Hole was "A" Hole 5/32 D.							
A	2 9/32 Dia. was 11/32	9-60	3075	CY	JCB			
	1 "A" HOLE WAS 3/16	23						
ISSUE	ITEM	CHANGED FROM	DATE	CH. NO.	DRAFTS	CHECKER	ENG. APP.	
TOLERANCES			SCALE: FULL					
DEC. DIM. ±			MAXIMUM ALLOWABLE TOLERANCES HAVE BEEN DETERMINED AND ANY DEVIATIONS WILL BE CAUSE FOR REJECTION. REMOVE ALL BURRS AND SHARP EDGES					
FRAC. DIM. ± 1/64								
ANGULAR DIM. ±								
5052-H32		TYPE & TEMPER		HEATTREAT. SPEC.		DRAWN	CHECKED	FINAL APPROVAL
S404 YELL IRIDITE						J.D.	JCB	MS-2357
FINISH & SPEC. NO.		ELEC. DES. APP		MECH. DES. APP		B		