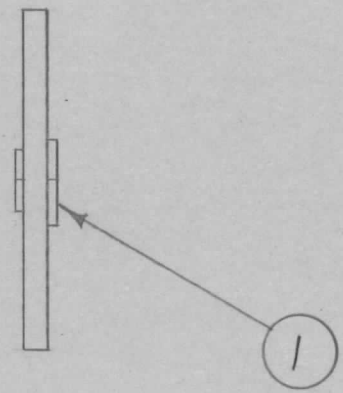
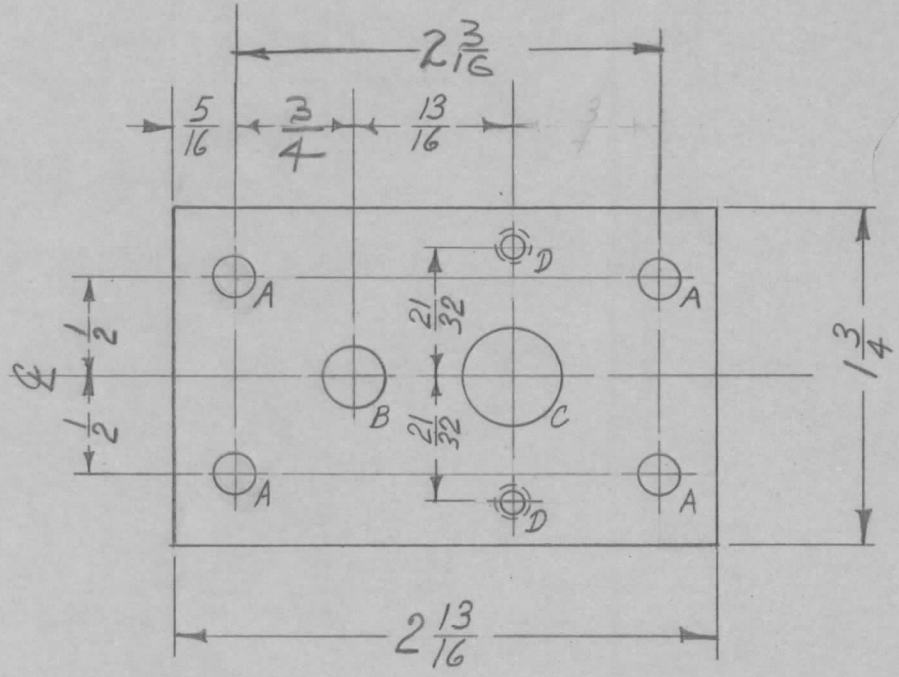


REQ. PER. UNIT	USED ON			MS-2356	A
	MODEL	ASS'Y. NO.	DATE		
1	CMO-1		8-9-60		
1	CMO-2		8-9-60		

A ~ $\frac{13}{64}$ DIA. 4 REQ.
 B ~ .312 ±.001 DIA. 1 "
 C ~ $\frac{1}{2}$ DIA. 1 "
 D - DR. & TAP FOR 6-32 2 "



REQ.	ITEM	PART NO.	DESCRIPTION		SYMBOL						
1	1	BB-117-6	NYLON PANEL BEARINGS								
STOCK SIZE			THE TECHNICAL MATERIEL CORP.								
ALUMINUM			MAMARONECK, NEW YORK								
MATERIAL			PLATE, CALIBRATE CONTROL								
ISSUE	ITEM	CHANGED FROM	DATE	CH. NO.	DRAFTS	CHECKER	ENG. APP.	5052-H32	DRAWN	CHECKED	FINAL APPROVAL
A	1	TOLERANCE ADDED TO "B" HOLE	9 23 60	3071	cus	Whe	[Signature]	5052-H32	[Signature]	[Signature]	[Signature]
TOLERANCES			SCALE: FULL			TYPE & TEMPER		HEATTREAT. SPEC.	ELEC. DES. APP		
DEC. DIM. ±			MAXIMUM ALLOWABLE TOLERANCES HAVE BEEN DETERMINED AND ANY DEVIATIONS WILL BE CAUSE FOR REJECTION. REMOVE ALL BURRS AND SHARP EDGES			S404 YELL. IRIDITE		MECH. DES. APP			
FRAC. DIM. ± 1/64						FINISH & SPEC. NO.		MS-2356			
ANGULAR DIM. ±								A			