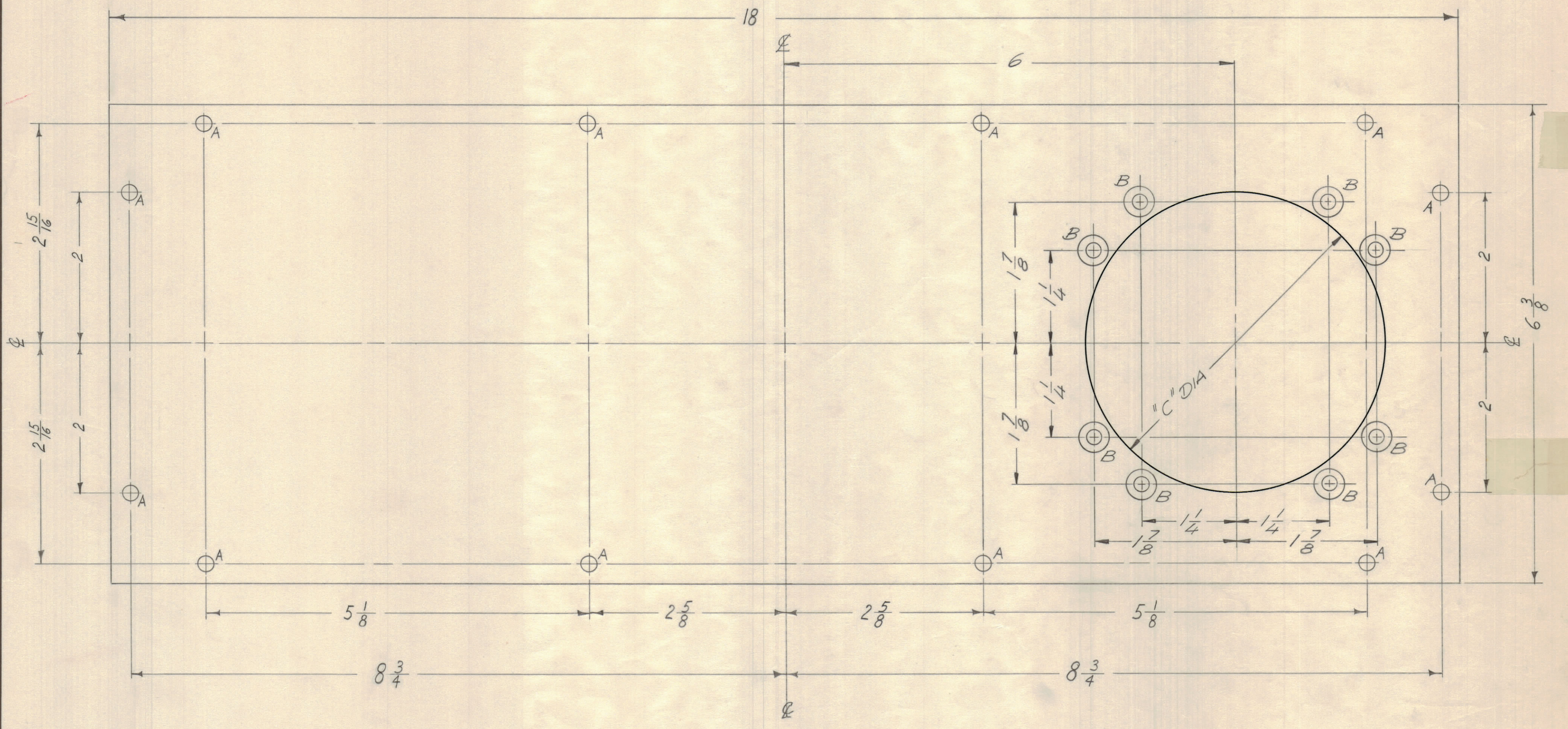


TMC PT. NO	A HOLES	B HOLES	"C" DIA.
MS 2338	13/64	NONE	NONE
MS 2338-2	13/64	DRILL & C' SINK FOR 10-32 FHS	4'

MS-2338 A

A -  $\frac{13}{64}$  DIA. (12 REQ.)  
 B ~ .196 DIA & 82° C' SINK (8 REQ.)  
 TO .390 DIA



ISSUE ZONE	DESCRIPTION	DATE	CH. NO.	DRAFTS	CHECKER	ENG. APP.
A	REV. & UPDATED	8/26/60	19566	KH	FB	FB

SCALE: FULL

MAXIMUM ALLOWABLE TOLERANCES HAVE BEEN DETERMINED AND ANY DEVIATIONS WILL BE CAUSE FOR REJECTION. REMOVE ALL BURRS AND SHARP EDGES

DEC. DIM. ± 1/64  
 FRAC. DIM. ± 1/64  
 ANGULAR DIM. ±

REQ PER UNIT	MODEL	SECTION	ASS'Y. NO.	DATE
1	GPT-10K	RF DECK	AS-117	7-27-60

REQ. ITEM	PART NO.	DESCRIPTION	SYMBOL
1	8	THE TECHNICAL MATERIEL CORP. MAMARONECK, NEW YORK	
ALUMINUM		PLATE, BLANK, CONVERSION	
5052-H32			
TYPE & TEMPER			
HEAT TREAT. SPEC.			
3404 YELL. IRIDITE			
FINISH & SPEC. NO.			

159